



**MITSUBISHI
MOTORS**



TRITON

EYES RIGHT, HERE COMES THE TOUGHER,
BIGGER, MORE POWERFUL BEAST.

BORN TO OWN THE WILD OR CRUISE
THE CONCRETE JUNGLE.

THIS MUSCULAR NEW BEAST WILL MAKE
ITS PRESENCE FELT OFF-ROAD OR IN YOUR DRIVEWAY.

THE ALL-NEW NEXT GENERATION TRITON,
THE KING OF THE BEASTS.

THIS CHANGES EVERYTHING.



Tows a Beast of a load.

NEW UPDATED TOWING TECHNOLOGY
AND SUPER SELECT 4WD DELIVERS
3.5 TONNE TOW CAPACITY.



» MODEL SHOWN TRITON GLXR in Graphite Grey.



Big boys toys.

WIDER AND LONGER WITH A GRUNTY NEW CHASSIS
DESIGN AND UPGRADED SUSPENSION, THIS NEW TRUCK
MAKES A TOUGH JOB EASY.

» MODEL SHOWN TRITON GLXR in Graphite Grey.

Weekend warrior.

PICK UP THE BOYS IN COMFORT,
CHUCK THE MATERIALS IN THE BACK
AND GET THAT HOME DIY JOB DONE.



A black Toyota Triton pickup truck is shown from a rear three-quarter view, parked in a wood yard. The truck's bed is filled with a large stack of firewood. A chainsaw is visible on the tailgate. The background consists of large stacks of logs and wood chips. The ground is covered with wood chips and some scattered logs.

***A good day's work.
Give that man a ...Triton.***

WITH STACKS OF LOAD SPACE AND INCREASED
POWER AND TORQUE, THE NEXT GENERATION TRITON
CAN GET THROUGH A TONNE OF WORK.

Muscular with boundless energy.

THE BEATING HEART OF THIS NEW TRITON IS
ITS 2.4 LITRE INTERCOOLED BI-TURBO DIESEL
ENGINE DELIVERING 470NM OF TORQUE.

BIGGER, BOLDER AND MORE POWERFUL,
UNLOCK BEAST MODE TODAY.



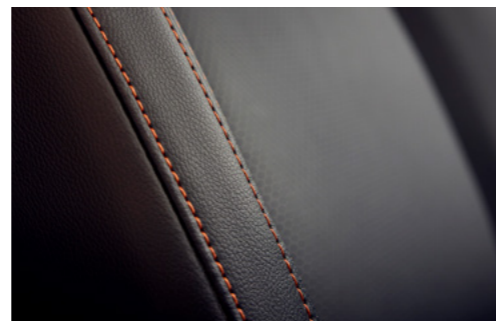


» SAFETY FROM EVERY ANGLE
Standard on all wellside models, Multi-Around View Monitor gives you a bird's eye view for safety in tight spaces.



» MODEL SHOWN TRITON VRX in Pitch Black.

Tougher on the outside, new levels of comfort on the inside.



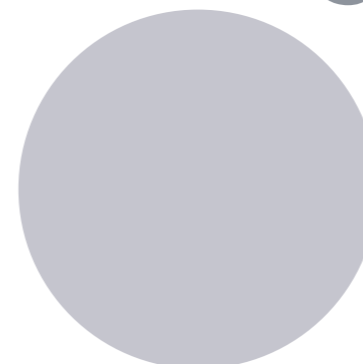
» (ABOVE) INTERIOR COMFORTS
The interior has been refined to give greater comfort and reduce stress and fatigue on long journeys.

» (MIDDLE RIGHT) MORE COMFORT
Next Generation Triton offers improved air conditioning performance, reaching the desired temperatures quicker, no matter what the outside conditions.

» (TOP RIGHT) LUXURIOUS INTERIOR
Premium leather interior with orange highlight stitching on VRX.

» (RIGHT) TOUGH FROM TOP TO BOTTOM.
The 7 inch driver's display quickly and clearly relays all the information you need.

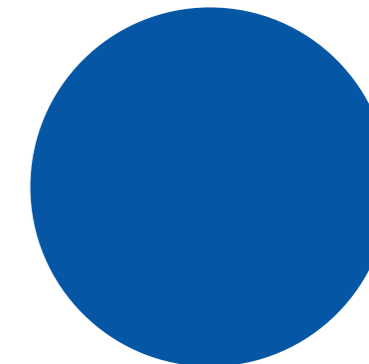
Detailing.



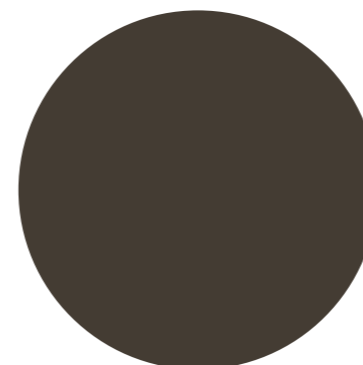
» BLADE SILVER



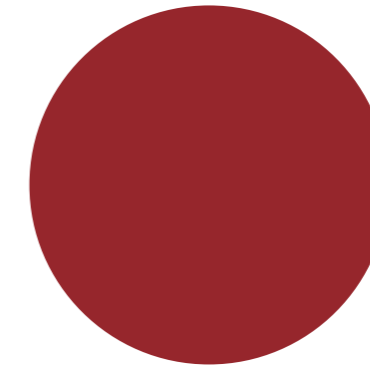
» CARDRONA



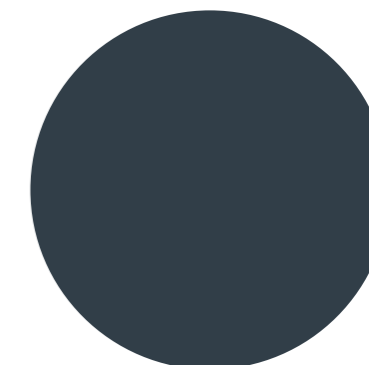
» IMPULSE BLUE



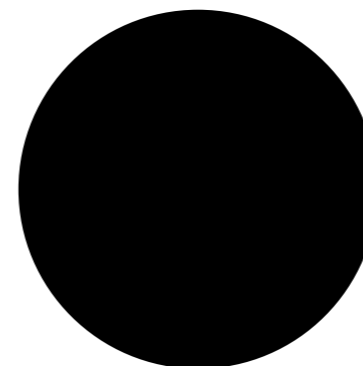
» DEEP BRONZE



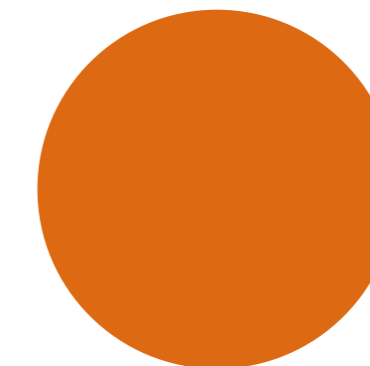
» INFERNO



» GRAPHITE GREY*



» PITCH BLACK*



» YAMABUKI ORANGE*



» WHITE DIAMOND**

*VRX only available in Graphite Grey, Pitch black, Yamabuki Orange & White Diamond only.
**White diamond is only available on VRX for an additional \$500

Specifications

	2WD AUTO			
	SINGLE CAB GLX	GLX	DOUBLE CAB GLXR	VRX
TRAY STYLE	Cab Chassis	Wellside (Cab Chassis)	Wellside (Cab Chassis)	Wellside (Cab Chassis)
MODEL CODE	XV2GLX22	XV2GLX47 (XV2GLX42)	XV2GLXR47 (XV2GLXR42)	XV2VRX47 (XV2VRX42)
INTERIOR CONT.				
SPEED SENSING DOOR LOCK	■	■	■	■
SUNVISORS				
DRIVER WITH TICKETHOLDER	■	■		
DRIVER WITH VANITY MIRROR & LID & TICKETHOLDER			■	■
PASSENGER VANITY MIRROR & LID	■	■	■	■
SUNGLASS HOLDER	■	■	■	■
INTERIOR RETRACTABLE GRAB HANDLES	■	■	■	■
ENTRY /EXIT GRIPS ON PILLAR				
A PILLAR	■	■	■	■
B PILLAR		■	■	■
CUP HOLDERS				
2X CENTER CONSOLE	■	■	■	■
2X 2ND ROW CENTER ARMREST		■	■	■
2X POP OUT				■
BOTTLE HOLDERS 4 (ALL DOORS)	■	■	■	■
INTERIOR LAMPS/ILLUMINATION				
FRONT MAP LAMP	■	■	■	■
ROOM LAMP		■	■	■
DOOR TRIM ILLUMINATION (FRONT DOORS)				■
SMARTPHONE WIRELESS CHARGER			■	■
USB PORTS				
2X ON INSTRUMENT PANEL	■	■	■	■
2X REAR CENTRE CONSOLE				■
12V ACCESSORY SOCKET				
REAR CENTRE CONSOLE		■	■	■
INSTRUMENT PANEL	■	■	■	■
AIR CONDITIONING				
CLIMATE CONTROL	■	■		
DUAL-ZONE CLIMATE CONTROL			■	■
AIR CIRCULATOR				■
SAFETY & SECURITY				
ANTI-THEFT ENGINE IMMOBILIZER	■	■	■	■
DRIVER & PASSENGER / FRONT SEAT-MOUNTED SIDE / SIDE CURTAIN / DRIVER KNEE / FRONT SEAT-MOUNTED CENTRE SRS AIRBAGS	■	■	■	■
FRONT 3 POINT SEATBELT WITH EMERGENCY LOCKING RETRACTOR (ELR) (WITH FORCE LIMITER & PRETENSIONER (DRIVER X2)) AND ADJUSTABLE ANCHOR (SINGLE CAB: FIXED ANCHOR)	■	■	■	■
REAR SEAT 3 POINT SEATBELT WITH EMERGENCY LOCKING RETRACTOR (ELR) (WITH FORCE LIMITER & PRETENSIONER*) *2ND ROW CENTRE SEAT IS NOT INCLUDED		■	■	■
SEATBELT REMINDER - ALL SEATS	■	■	■	■
LOWER ANCHOR AND TETHER ANCHOR FOR ISO-FIX CHILD SEAT (FOR 2ND ROW SEAT X 2)		■	■	■
ABS, HILL START ASSIST, BRAKE ASSIST SYSTEM, ELECTRONIC BRAKE DISTRIBUTION, EMERGENCY STOP SIGNAL, AUTOMATIC POST-COLLISION BRAKING SYSTEM, ACTIVE STABILITY & TRACTION CONTROL & ACTIVE LSD (BRAKE CONTROL TYPE)	■	■	■	■
HILL DESCENT CONTROL (HDC)				
ADAPTIVE CRUISE CONTROL (ACC)	■	■	■	■
FORWARD COLLISION MITIGATION (WITH PEDESTRIAN / CYCLIST DETECTION & JUNCTION ASSIST)	■	■	■	■
LANE DEPARTURE WARNING (LDW)	■	■	■	■
LANE DEPARTURE PREVENTION (LDP)	■	■	■	■
EMERGENCY LANE ASSIST (ELA)	■	■	■	■
REAR CROSS TRAFFIC ALERT (RCTA)	■	■	■	■
FRONT CROSS TRAFFIC ALERT (FCTA)	■	■	■	■
REAR-VIEW CAMERA	■	- (■)	- (■)	- (■)
MULTI AROUND VIEW MONITOR WITH MOVING OBJECT DETECTION (MOD)		■ (-)	■ (-)	■ (-)
TRAFFIC SIGN RECOGNITION SYSTEM (TSR)	■	■	■	■
SPEED LIMITER	■	■	■	■
BLIND SPOT WARNING (BSW) WITH LANE CHANGE ASSIST (LCA)	■	■	■	■
REAR AUTOMATIC EMERGENCY BRAKING (REAR AEB)		■ (-)	■ (-)	■ (-)
DRIVER ATTENTION ALERT (DAA)	■	■	■	■
DRIVER MONITORING SYSTEM (DMS)	■	■	■	■

	4WD AUTO				
	SINGLE CAB GLX	CLUB CAB GLX	GLX	DOUBLE CAB GLXR	VRX
Cab Chassis		Wellside (Cab Chassis)	Wellside (Cab Chassis)	Wellside (Cab Chassis)	Wellside (Cab Chassis)
XV6GLX22	XV6GLX26 (XV6GLX23)	XV6GLX47 (XV6GLX42)	XV6GLXR47 (XV6GLXR42)	XV6VRX47 (XV6VRX42)	
INTERIOR CONT.					
SPEED SENSING DOOR LOCK	■	■	■	■	■
SUNVISORS					
DRIVER WITH TICKETHOLDER	■	■	■		
DRIVER WITH VANITY MIRROR & LID & TICKETHOLDER				■	■
PASSENGER VANITY MIRROR & LID	■	■	■	■	■
SUNGLASS HOLDER	■	■	■	■	■
INTERIOR RETRACTABLE GRAB HANDLES	■	■	■	■	■
ENTRY /EXIT GRIPS ON PILLAR					
A PILLAR	■	■	■	■	■
B PILLAR		■	■	■	■
CUP HOLDERS					
2X CENTER CONSOLE	■	■	■	■	■
2X 2ND ROW CENTER ARMREST		■	■	■	■
2X POP OUT					■
BOTTLE HOLDERS 4 (ALL DOORS)	■	■	■	■	■
INTERIOR LAMPS/ILLUMINATION					
FRONT MAP LAMP	■	■	■	■	■
ROOM LAMP		■	■	■	■
DOOR TRIM ILLUMINATION (FRONT DOORS)					■
SMARTPHONE WIRELESS CHARGER				■	■
USB PORTS					
2X ON INSTRUMENT PANEL	■	■	■	■	■
2X REAR CENTRE CONSOLE					■
12V ACCESSORY SOCKET					
REAR CENTRE CONSOLE		■	■	■	■
INSTRUMENT PANEL	■	■	■	■	■
AIR CONDITIONING					
CLIMATE CONTROL	■	■	■		
DUAL-ZONE CLIMATE CONTROL				■	■
AIR CIRCULATOR					■
SAFETY & SECURITY					
ANTI-THEFT ENGINE IMMOBILIZER	■	■	■	■	■
DRIVER & PASSENGER / FRONT SEAT-MOUNTED SIDE / SIDE CURTAIN / DRIVER KNEE / FRONT SEAT-MOUNTED CENTRE SRS AIRBAGS	■	■	■	■	■
FRONT 3 POINT SEATBELT WITH EMERGENCY LOCKING RETRACTOR (ELR) (WITH FORCE LIMITER & PRETENSIONER (DRIVER X2)) AND ADJUSTABLE ANCHOR (SINGLE CAB: FIXED ANCHOR)	■	■	■	■	■
REAR SEAT 3 POINT SEATBELT WITH EMERGENCY LOCKING RETRACTOR (ELR) (WITH FORCE LIMITER & PRETENSIONER*) *2ND ROW CENTRE SEAT IS NOT INCLUDED		■	■	■	■
SEATBELT REMINDER - ALL SEATS	■	■	■	■	■
LOWER ANCHOR AND TETHER ANCHOR FOR ISO-FIX CHILD SEAT (FOR 2ND ROW SEAT X 2)		■	■	■	■
ABS, HILL START ASSIST, BRAKE ASSIST SYSTEM, ELECTRONIC BRAKE DISTRIBUTION, EMERGENCY STOP SIGNAL, AUTOMATIC POST-COLLISION BRAKING SYSTEM, ACTIVE STABILITY & TRACTION CONTROL & ACTIVE LSD (BRAKE CONTROL TYPE)	■	■	■	■	■
HILL DESCENT CONTROL (HDC)					
ADAPTIVE CRUISE CONTROL (ACC)	■	■	■	■	■
FORWARD COLLISION MITIGATION (WITH PEDESTRIAN / CYCLIST DETECTION & JUNCTION ASSIST)	■	■	■	■	■
LANE DEPARTURE WARNING (LDW)	■	■	■	■	■
LANE DEPARTURE PREVENTION (LDP)	■	■	■	■	■
EMERGENCY LANE ASSIST (ELA)	■	■	■	■	■
REAR CROSS TRAFFIC ALERT (RCTA)	■	■	■	■	■
FRONT CROSS TRAFFIC ALERT (FCTA)	■	■	■	■	■
REAR-VIEW CAMERA	■	- (■)	- (■)	- (■)	- (■)
MULTI AROUND VIEW MONITOR WITH MOVING OBJECT DETECTION (MOD)		■ (-)	■ (-)	■ (-)	■ (-)
TRAFFIC SIGN RECOGNITION SYSTEM (TSR)	■	■	■	■	■
SPEED LIMITER	■	■	■	■	■
BLIND SPOT WARNING (BSW) WITH LANE CHANGE ASSIST (LCA)	■	■	■	■	■
REAR AUTOMATIC EMERGENCY BRAKING (REAR AEB)		■ (-)	■ (-)	■ (-)	■ (-)
DRIVER ATTENTION ALERT (DAA)	■	■	■	■	■
DRIVER MONITORING SYSTEM (DMS)	■	■	■	■	■

While we have made every effort to ensure that the specifications are correct at the time of printing, Mitsubishi product is constantly developing. We reserve the right to change the specifications, colours and prices of models and items within this brochure. For current specifications always contact your Mitsubishi dealer.

Specifications

	2WD AUTO			
	SINGLE CAB GLX	GLX	DOUBLE CAB GLXR	VRX
TRAY STYLE	Cab Chassis	Wellside (Cab Chassis)	Wellside (Cab Chassis)	Wellside (Cab Chassis)
MODEL CODE	XV2GLX22	XV2GLX47 (XV2GLX42)	XV2GLXR47 (XV2GLXR42)	XV2VRX47 (XV2VRX42)
SAFETY & SECURITY CONT.				
TRAILER STABILITY ASSIST (TSA)	■	■	■	■
PARKING SENSORS (FRONT & REAR)	■	■	■	■
CHILD SAFETY LOCK (REAR DOOR)		■	■	■
ACTIVE YAW CONTROL (AYC)				
TYRE PRESSURE MONITORING SYSTEM (TPMS)				■
DISPLAY, NAVIGATION & AUDIO				
COMBINATION METER CLUSTER WITH SPEEDO, TACHOMETER AND 7 INCH MULTI-INFORMATION DISPLAY	■	■	■	■
9 INCH SMARTPHONE-LINK DISPLAY AUDIO (SDA) NAVIGATION SYSTEM, AM/FM, USB/BLEETOOTH® MUSIC PLAYER	■	■	■	■
ANDROID AUTO & WIRELESS APPLE CARPLAY	■	■	■	■
SPEAKERS	2			
	4	■	■	
	6			■
LIGHTING & VISIBILITY				
HEADLIGHTS	HALOGEN WITH MANUAL LEVELLING	■	■	
	LED WITH MANUAL LEVELLING			■
AUTOMATIC DUSK-SENSING HEADLIGHT	■	■	■	■
AUTOMATIC HIGH BEAM (AHB)	■	■	■	■
LED FRONT FOG LIGHT			■	■
DAYTIME RUNNING LIGHT (DRL)	HALOGEN IN BUMPER	■	■	
	LED IN HEADLAMP			■
SIDE TURN LIGHTS	ON FENDER	■	■	
	LED ON MIRROR			■
REAR COMBINATION LIGHTS	CAB CHASSIS TYPE	■	- (■)	- (■)
	MID GRADE TYPE		■ (-)	
	HIGH GRADE LED TYPE			■ (-)
REAR CENTRE LED STOP LIGHT ON TAILGATE		■ (-)	■ (-)	■ (-)
WINDSCREEN WIPER - TWO SPEED WITH AUTO RAIN SENSING	■	■	■	■
DIMENSIONS / WEIGHTS				
OVERALL LENGTH / WIDTH / HEIGHT	* / 1,865 / 1,785 mm	5,320 (*) / 1,865 / 1,795 mm		5,320 (*) / 1,930 / 1,815 mm
WHEELBASE		3,130 mm		
TRACK FRONT & REAR		1570 / 1565 mm		
TURNING CIRCLE	BODY	13.2 m		
	WHEEL	12.4m		
APPROACH ANGLE		30.4°		
DEPARTURE ANGLE	*	22.8° (*)	22.8° (*)	22.8° (*)
RAMP BREAKOVER ANGLE		23.6°		
GROUND CLEARANCE		222 mm		
KERB MASS	1,751 kg	2,014 (1,899) kg	2,010 (1,894) kg	2025 (1,904) kg
GROSS VEHICLE MASS (GVM)		3,070 kg		
GROSS COMBINATION MASS (GCM) (CLASS 2 LICENCE REQUIRED FOR LOADS OVER 6,000KG)		6,210 kg		
MAXIMUM PAYLOAD	1,319 kg	1,056 (1,171) kg	1,060 (1,176) kg	1045 (1,166) kg
MAXIMUM AXLE LOAD FRONT/ REAR		1,500 / 1,980 kg		
TOWING CAPACITY - BRAKED / UNBRAKED		3,500 / 750 kg		
TOWING CAPACITY - MAXIMUM TOWBALL LOAD		350 kg		
MAXIMUM ROOF LOAD	-	80 kg		
WELLSIDE INNER HOOKS X4	*	■ (*)	■ (*)	■ (*)
WELLSIDE INTERIOR LENGTH / WIDTH / HEIGHT	*	1,555 (*) / 1,545 (*) / 525 (*) mm	1,555 (*) / 1,545 (*) / 525 (*) mm	1,555 (*) / 1,545 (*) / 525 (*) mm
BETWEEN WHEEL ARCHES	*	1,135 (*) mm	1,135 (*) mm	1,135 (*) mm
WELLSIDE FLOOR HEIGHT FROM GROUND	*	820 (*) mm	820 (*) mm	820 (*) mm

* Dependent on Tray Fitted

	4WD AUTO				
	SINGLE CAB GLX	CLUB CAB GLX	GLX	DOUBLE CAB GLXR	VRX
Cab Chassis	Wellside (Cab Chassis)	Wellside (Cab Chassis)	Wellside (Cab Chassis)	Wellside (Cab Chassis)	Wellside (Cab Chassis)
XV6GLX22	XV6GLX26 (XV6GLX23)	XV6GLX47 (XV6GLX42)	XV6GLXR47 (XV6GLXR42)	XV6VRX47 (XV6VRX42)	
SAFETY & SECURITY CONT.					
TRAILER STABILITY ASSIST (TSA)	■	■	■	■	■
PARKING SENSORS (FRONT & REAR)	■	■	■	■	■
CHILD SAFETY LOCK (REAR DOOR)			■	■	■
ACTIVE YAW CONTROL (AYC)	■	■	■	■	■
TYRE PRESSURE MONITORING SYSTEM (TPMS)					■
DISPLAY, NAVIGATION & AUDIO					
COMBINATION METER CLUSTER WITH SPEEDO, TACHOMETER AND 7 INCH MULTI-INFORMATION DISPLAY	■	■	■	■	■
9 INCH SMARTPHONE-LINK DISPLAY AUDIO (SDA) NAVIGATION SYSTEM, AM/FM, USB/BLEETOOTH® MUSIC PLAYER	■	■	■	■	■
ANDROID AUTO & WIRELESS APPLE CARPLAY	■	■	■	■	■
SPEAKERS	2				
	4	■	■		
	6				■
LIGHTING & VISIBILITY					
HEADLIGHTS	HALOGEN WITH MANUAL LEVELLING	■	■		
	LED WITH MANUAL LEVELLING				■
AUTOMATIC DUSK-SENSING HEADLIGHT	■	■	■	■	■
AUTOMATIC HIGH BEAM (AHB)	■	■	■	■	■
LED FRONT FOG LIGHT				■	■
DAYTIME RUNNING LIGHT (DRL)	HALOGEN IN BUMPER	■	■		
	LED IN HEADLAMP				■
SIDE TURN LIGHTS	ON FENDER	■	■		
	LED ON MIRROR				■
REAR COMBINATION LIGHTS	CAB CHASSIS TYPE	■	- (■)	- (■)	- (■)
	MID GRADE TYPE		■ (-)		
	HIGH GRADE LED TYPE			■ (-)	■ (-)
REAR CENTRE LED STOP LIGHT ON TAILGATE		■ (-)	■ (-)	■ (-)	■ (-)
WINDSCREEN WIPER - TWO SPEED WITH AUTO RAIN SENSING	■	■	■	■	■
DIMENSIONS / WEIGHTS					
OVERALL LENGTH / WIDTH / HEIGHT	* / 1,865 / 1,785 mm	5,320 (*) / 1,865 / 1,795 mm		5,320 (*) / 1,930 / 1,815 mm	
WHEELBASE		3,130 mm			
TRACK FRONT & REAR		1570 / 1565 mm			
TURNING CIRCLE	BODY	13.2 m			
	WHEEL	12.4 m			
APPROACH ANGLE		30.4°			
DEPARTURE ANGLE	*	22.8° (*)	22.8° (*)	22.8° (*)	22.8° (*)
RAMP BREAKOVER ANGLE		23.4°			
GROUND CLEARANCE		222 mm			
KERB MASS	1,858 kg	2,095 (1,961) kg	2,111 (1,996) kg	2,105 (1,988) kg	2,125 (2,004) kg
GROSS VEHICLE MASS (GVM)		3,200 kg			
GROSS COMBINATION MASS (GCM) (CLASS 2 LICENCE REQUIRED FOR LOADS OVER 6,000KG)		6,250 kg			
MAXIMUM PAYLOAD	1,342 kg	1,105 (1,239) kg	1,089 (1,204) kg	1,095 (1,212) kg	1,075 (1,196) kg
MAXIMUM AXLE LOAD FRONT/ REAR		1,580 / 2,040 kg			
TOWING CAPACITY - BRAKED / UNBRAKED		3,500 / 750 kg			
TOWING CAPACITY - MAXIMUM TOWBALL LOAD		350 kg			
MAXIMUM ROOF LOAD	-	80 kg			
WELLSIDE INNER HOOKS X4	*	■ (*)	■ (*)	■ (*)	■ (*)
WELLSIDE INTERIOR LENGTH / WIDTH / HEIGHT	*	1860 (*) / 1535 (*) / 525 (*) mm	1,555 (*) / 1,545 (*) / 525 (*) mm	1,555 (*) / 1,545 (*) / 525 (*) mm	1,555 (*) / 1,545 (*) / 525 (*) mm
BETWEEN WHEEL ARCHES	*	1,135 (*) mm	1,135 (*) mm	1,135 (*) mm	1,135 (*) mm
WELLSIDE FLOOR HEIGHT FROM GROUND	*	820 (*) mm	820 (*) mm	820 (*) mm	820 (*) mm

While we have made every effort to ensure that the specifications are correct at the time of printing, Mitsubishi product is constantly developing. We reserve the right to change the specifications, colours and prices of models and items within this brochure. For current specifications always contact your Mitsubishi dealer.

10 | 5
YEAR | YEAR

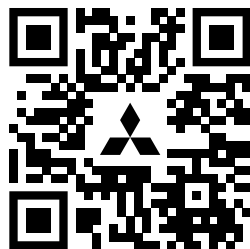
**DIAMOND
ADVANTAGE**

**NEW ZEALAND'S BEST
NEW CAR WARRANTY AND
CUSTOMER CARE**

A VERY WELL MADE WARRANTY

Our *Diamond Advantage Warranty* comprises a **10 year/160,000 km powertrain warranty** that covers everything from engine to axle; a **5 year/130,000 km new vehicle warranty**; and **5 years Premium Roadside Assist**, which looks after you if the unexpected should happen. It's the warranty designed for complete peace of mind.

Visit **mmnz.co.nz** for terms and conditions



**SCAN HERE
TO SECURE YOUR
NEW BEAST
OR VISIT [MMNZ.CO.NZ](http://mmnz.co.nz)**