

# AUTOPACT

Mechanical Protection Plan



**PlatinumOne**  
PROTECTION PLAN  
FOR NEW VEHICLES  
*Drive away happy*

## Mechanical Protection Plans for New Vehicles

### PlatinumOne

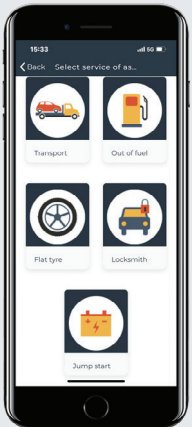
Parts covered are those that are covered under the Manufacturer's New Vehicle Warranty, except for EV and Hybrid batteries, paint and trim.

Refer to any exclusions that are shown in your Manufacturer's handbook.

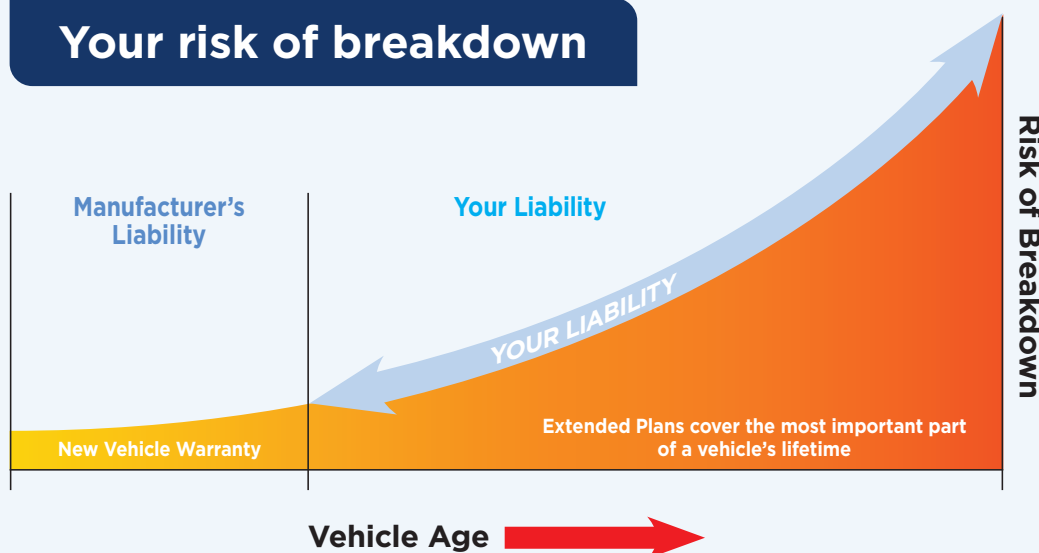
Cover	PlatinumOne
Parts covered	As per manufacturer's*
Term	1 or 3 years / 250,000 km
Per claim limit	\$8,000
Total claims limit	Unlimited*
Extras	Platinum Plus Roadside
Service and Tyre Credit	\$250 Only redeemed at Autopact
Cost	\$1,095 or \$2,785

Cooling off period expires at time of delivery.

\*Refer to policy document

Extras	Platinum Plus Roadside						
Inclusions	NRA	Download your Roadside App	OTHER PROVIDER				
	Platinum Plus		Roadside	Extra	Plus Care	Ultra Care	Ultimate
Price p.a.	Included		\$106	\$118	\$178	\$226	\$310
Break Down - Towing	250km round trip Emergency towing: Up to \$200 per year onward travel expenses		20km	35km	50km	60km	100km
Emergency Fuel	Up to 5 litres free		Driver pays	Driver pays	Up to 3 times p.a.	Up to 3 times p.a.	Up to 4 times p.a.
Taxi	Major failure extras up to \$1200 per year (combined) – Car hire (up to \$120/day), accommodation (\$250/day), emergency travel fares (up to \$300 per ticket), trailer hire (\$120/day), additional transport fees (up to \$400 per breakdown)		×	×	Up to \$27 p.a.	Up to \$55 p.a.	Up to \$150 p.a.
Rental Vehicle			×	×	×	Up to 1 day/ \$220 p.a.	Up to 3 days/ \$330 p.a.
Specialist Towing			×	×	Up to \$110 p.a.	Up to \$165 p.a.	Up to \$250 p.a.
Emergency Locksmith			Up to \$250 per year	×	×	Up to \$110 p.a.	Up to \$165 p.a.

### Your risk of breakdown



### Conditions

#### Servicing

At an Autopact Service Centre

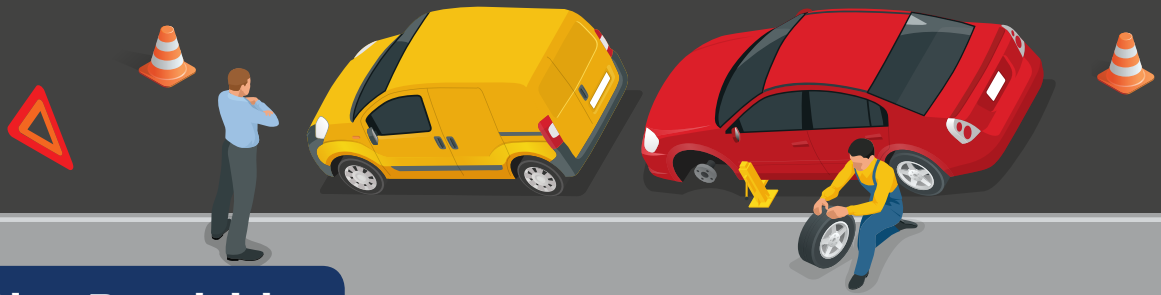
#### How often

As per owner's manual

#### How much

Refer manufacturer's website





## Platinum Plus Roadside

[nationalroadsideassist.com.au](http://nationalroadsideassist.com.au)

National Roadside Assist offers a nationwide emergency breakdown program with over 1700 service providers on our network in Australia and New Zealand, on call 24 hours, 7 days a week delivering peace of mind motoring with quality road rescue services.

With our reliable nationwide network, NRA provides a high standard of fast, professional service.

All service providers communicate via radio, satellite navigation or mobile phone ensuring NRA's ability to monitor progress of individual call outs, and log successful completion of each job.

Platinum Plus cover provides your vehicle with the following fantastic benefits to keep you secure whilst you meet your servicing requirements.

Visit [nationalroadsideassist.com.au](http://nationalroadsideassist.com.au) for details.

### Roadside Response

Simply call our toll free number. We will jump start your car when you get a flat 12V starter battery, fit your spare when you get a flat tyre, gain access to your vehicle when you've locked your keys/key card inside (**up to \$250 per year**), bring some petrol for you when you run out (**up to 5lt free**) or if your EV runs out of charge we will tow it to the nearest charging facility/home (towing free service radius applies, excludes charging costs).

### Towing Breakdown

If you break down, we will transport you back to the dealership where you bought your car within **a 250km round trip**, or to the nearest authorised service centre if during business hours. If your vehicle breaks down due to failure and requires emergency towing, we will reimburse up to **\$200** per year for onward travel expenses. If you break down whilst towing your **caravan or trailer (up to 3.5 tonnes)**, we will assist with transporting your caravan/trailer home or to a secure location of your choice, **within the 250km round trip** limit.

### Ambulance Cover

In the event of an accident where the registered vehicle is involved, and as a result, the driver or passengers require an ambulance, we will assist with reimbursement of ambulance fees.

**Reimbursement of claims under the Extras cover will only be approved if there is a major vehicle breakdown resulting in a tow/call-out by NRA.**

### EXTRAS up to \$1,200 per year

#### Car Hire, Accommodation, Emergency Travel Fares, Trailer Hire, Transport Fees,

In the event of a major vehicle breakdown, we will assist with reimbursement of immediate costs of any combination of the following: Car Hire (up to **\$120** p/day), Emergency accommodation (**\$250** p/day), emergency travel (airfare/bus/train up to **\$300** per ticket), Trailer Hire (**\$120** p/day), additional transport fees (Long Distance Transport ie: Roadtrain or Vehicle Transporter up to **\$400** per breakdown). Excludes fuel, electric charge costs, km charges, administration charges, credit card charges, Vehicle Registration Recovery Fees, rental/travel insurance/cover/excess reduction, one-way drop off/collection fees, premium location fees, additional driver and driver under 25 years fees, excess baggage, airport taxes, any optional extras, meals and refreshments.

### National Roadside Assist App



For a list of the Exclusions and Limitations applicable to all our Roadside Plans, click on this [link](#) or scan the QR code.

Refer to your policy document for Terms and Conditions.





## Don't use it Don't lose it! You Will Receive

Refund equal to 50% of the original purchase price of the plan.  
(GST Inclusive)

## Gimmick Free Guaranteed

You don't need to mention this in any of your dealings for your replacement vehicle.  
Simply present this page after the deal is done and we will have a cheque ready for you on delivery\*, or if you'd prefer we can reduce the final negotiated price of the replacement vehicle.

\* The request for a refund must be presented before delivery or a refund cannot be made.

### 3 Easy Steps To Qualify for a Refund

1. The plan must be currently active (i.e. within the plan term and with services maintained in accordance with the terms and conditions of the plan). 2. No claims have been made. 3. You are trading in your vehicle and buying another vehicle from any of the Autopact dealerships.

## Service Department Locations

### New South Wales

#### Bathurst

Bathurst Motor Group | 02 6338 2000  
10 Corporation Ave, Bathurst  
Dealer Licence: MD21051

#### Dubbo

Dubbo Automotive | 02 6884 9755  
94 - 100 Wheelers Ln, Dubbo  
Dealer Licence: MVRL47969

Western Plains Automotive | 02 6885 2911  
59-71 Victoria St, Dubbo  
Dealer Licence: MVRL50414

#### Orange

Orange Motor Group | 02 6362 7169  
8 - 14 Gateway Cres, Orange  
Dealer Licence: MVRL50157

#### Tweed Heads

Cricks Tweed | 07 5506 0900  
146 Minjungbal Dr, Tweed Heads  
Dealer Licence: MD20921

#### Wollongong

Gateway Automotive | 02 4222 8888  
Cnr Mt Ousley Rd & Princes Hwy, Fairy Meadow  
Dealer Licence: MD19816

### Queensland

#### Brisbane

Cricks Highway | 07 3808 1111  
3481 Pacific Hwy, Springwood  
Dealer Licence: 365 5366

#### Rockhampton

Dealer Licence: 314 5708  
DC Motors | 07 4999 1200  
Cnr Derby St & Campbell St, Rockhampton  
Rockhampton Auto Group | 07 4922 1000  
112-118 Musgrave St, North Rockhampton  
Rockhampton Mazda | 07 4927 8311  
210 Musgrave St, North Rockhampton

#### Sunshine Coast

Garry Crick's (Nambour) Pty Ltd - Dealer Licence: 1806686  
Cricks Maroochydore | 07 5450 3300  
88 Sugar Rd, Maroochydore  
Cricks Wises Maroochydore | 07 5409 4100  
12-14 Wises Rd, Maroochydore  
Cricks Nambour | 07 5441 9500  
952 Nambour Connection Rd, Nambour  
Cricks Noosa | 07 5440 3600  
'Autopark' Lot 4 Lionel Donovan Drv, Noosaville  
Cricks VW Sunshine Coast | 07 5373 3100  
6 Flinders Ln, Maroochydore  
Caloundra City Autos | 07 5491 5522  
45 Caloundra Rd, Caloundra  
Caloundra Mazda | 07 5413 3700  
13 Caloundra Rd, Caloundra  
Coastline BMW | 07 5491 9100  
770 Nicklin Way, Currumbundi  
Dealer Licence: 4116368

### Victoria

Dealer Licence: LMCT 11720

Bayford Ford Bundoora | 03 9467 5533  
475 Grimshaw St, Bundoora

Bayford Ford Coburg | 03 9297 5100  
683 Sydney Rd, Coburg

Bayford Ford Epping | 03 9401 8888  
356 Cooper St, Epping

Bayford Volkswagen Camberwell | 03 9811 1888  
675 Burwood Rd, Hawthorn East

Bayford Volkswagen Epping | 03 9409 9000  
350 Cooper St, Epping

Bayford Volkswagen Fairfield | 03 9471 5500  
415 Heidelberg Rd, Fairfield

Blackburn GWM | 03 9894 2244  
138 Whitehorse Rd, Blackburn

Blackburn Kia | 03 9894 2244  
136 Whitehorse Rd, Blackburn

Blackburn Nissan | 03 9894 2244  
138 Whitehorse Rd, Blackburn

Burwood Nissan | 03 9273 7222  
101 Burwood Hwy, Burwood

Burwood GWM Haval | 03 9273 7222  
101 Burwood Hwy, Burwood

Etheridge Ford Ringwood | 03 9298 5200  
495 Maroondah Hwy, Ringwood

Etheridge Ford Lilydale | 03 9735 7600  
30-32 John St, Lilydale

Ferntree Gully Hyundai | 03 8777 1303  
875 Burwood Hwy, Ferntree Gully  
Dealer Licence: MCT-0011061

Ferntree Gully Kia | 03 9122 8627  
871 Burwood Hwy, Ferntree Gully  
Dealer Licence: MCT-0011061

Knox Mitsubishi | 03 9071 0849  
437 Stud Rd, Wantirna South  
Dealer Licence: MCT-0011585

# AUTOPACT