

 **XCMG** SALES
& SERVICE

XE27U MINI EXCAVATOR



www.xcmgmachinery.com.au

INDUSTRY EXPERTISE

XCMG Sales & Service is one of Australia's **fastest growing** construction and mining equipment suppliers.

Offering premium quality excavators, wheel loaders, compaction rollers, graders and mini excavators, XCMG Sales & Service has **the products and the support** to keep you working on any job site.

MACHINERY SALES

XCMG Sales & Service know construction and mining equipment. You can count on our **dedicated and knowledgeable team** of product experts to take the time to understand and satisfy your machinery needs by recommending the **right solution for the job**.

RENTALS & HIRE

If you need a high-performance machine with reliability you can **trust**, and the flexibility of hiring, we have you covered.

Our fleet is diverse, with machines to suit almost any job. Furthermore, because our rental fleet is maintained by factory-trained technicians, you can be confident that you'll not only be getting the best machines on the market, but that it's going to **work as hard as you do**, day-in day-out.

AFTERMARKET SUPPORT

We're here to help keep you and your machine working. With an **exceptional over-the-counter fill rate** on spare parts, you're assured that when you buy a machine from XCMG Sales & Service, you'll be looked after throughout your machine's entire lifetime, from start to finish.

Every service job is as important to us as it is to you, and with a dedicated team of machinery technicians, we have ample resources to look after any of your machine repairs or servicing requirements **quickly and efficiently**.

ABOUT

The World's 3rd largest manufacturer of construction and mining equipment.

Founded in 1943, 8 decades of experience.

Manufacturing in USA, Germany, China, Brazil and India.

Extensive supply chain and dealer network throughout Australia.

Deep relationships with corporate giants: Rio Tinto, BHP and MMG in Australia.

MINI / LARGE EXCAVATORS

1 to 49 Tonne

WHEEL LOADERS

5 to 100 Tonne

COMPACTION ROLLERS

1.5 to 30 Tonne Smooth & Padfoot

GRADERS

7.5 to 70 Tonne

**National Hotline:
1300 837 391**



NEWCASTLE (NORTHERN NSW)

Situated in Hexham on the Pacific Highway. Serves the Northern NSW region from the Hawkesbury River to the QLD border. Company headquarters: complete sales, service (in-house / field), hire, parts and corporate shared services.

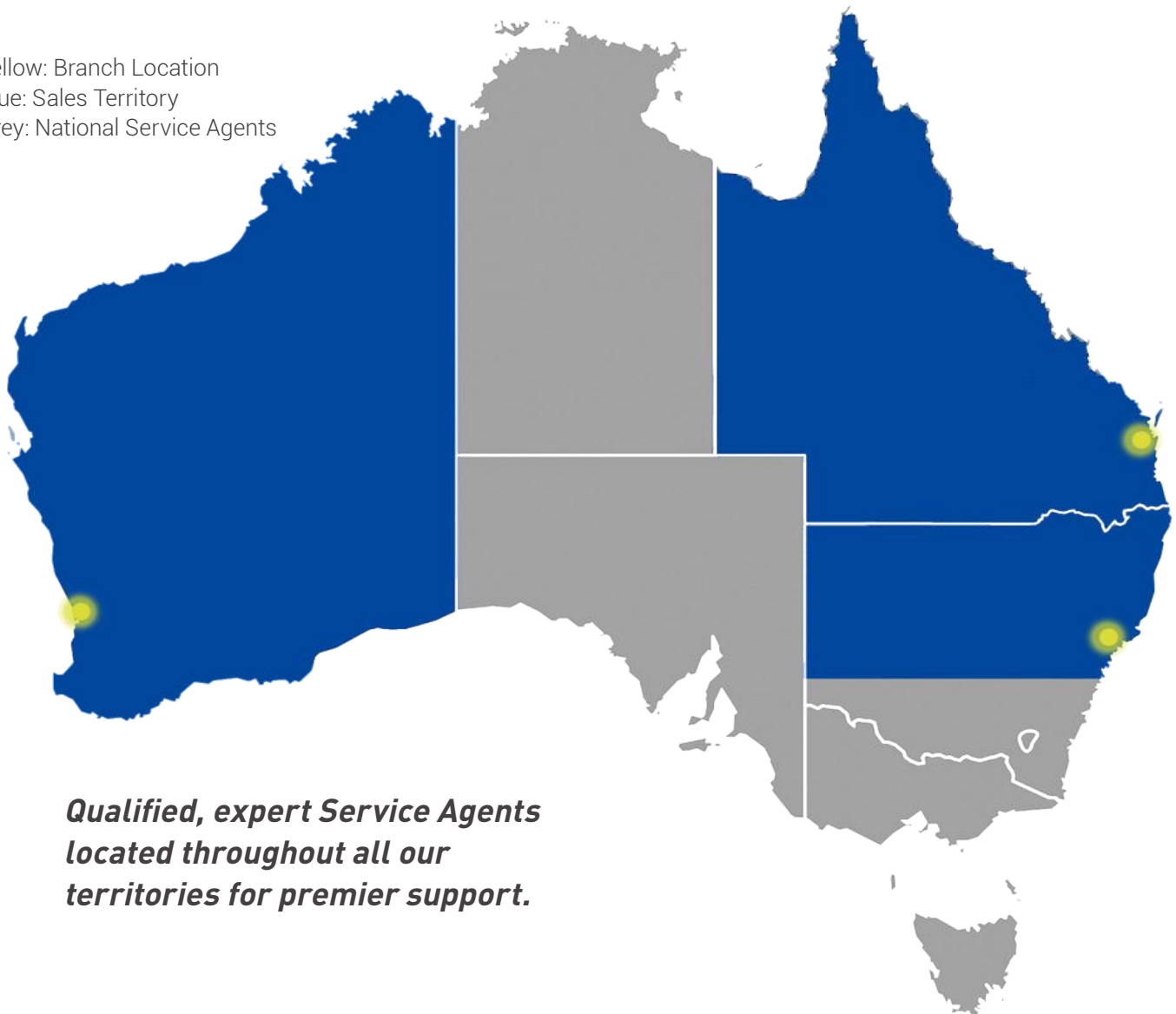
PERTH (WESTERN AUSTRALIA)

Located in Welshpool just 15 minutes from the CBD, serves the entire state of Western Australia. Sales, rentals, parts and service, including field service capabilities to various mine sites throughout WA.

BRISBANE (QUEENSLAND)

Situated 30 minutes from the CBD, conveniently located to serve all areas of Queensland. Sales, rentals, parts and service (in-house and field).

Yellow: Branch Location
Blue: Sales Territory
Grey: National Service Agents



***Qualified, expert Service Agents
located throughout all our
territories for premier support.***

PERFORMANCE, RELIABILITY & VALUE

GLOBAL DOMINANCE

XCMG is the World's 3rd largest construction machinery manufacturer, with branches dealers and service agents throughout Australia.

KUBOTA ENGINE

Renowned Kubota Euro Stage V emission certified engine delivering maximum power and torque plus exceptional reliability and longevity.

SAFETY VALVES

Unlike many other makes and models in its size class, arm and boom safety valves are included as standard on the XE27U, further enhancing your operational safety and peace of mind.

INTELLIGENT DESIGN

The innovative and practical design of the XE27U, with its spacious cab and robust undercarriage, delivers unmatched stability, comfort and control.

ZERO TAILSWING

Operate with maximum performance, safety and efficiency in tight spaces thanks to the XE27U's true zero tailswing design.

EXCEPTIONAL HYDRAULICS

Class-leading 82.8 LPM hydraulic system delivers exceptional flow rates to attachments, with maximum oil flow control on Auxiliary 1 and 2.



Designed to perform...

XE27U MINI EXCAVATOR

OPEN CANOPY

ROPS, TOPS and OPG certified canopy is durable and robust to handle severe impact, ensuring your safety and peace of mind while operating.

VISIBILITY PLUS

In addition to the 360 degree visibility offered by the XE27U's clever open canopy design, also included as standard are front work lights for low light operation.

RELIABILITY & TRUST

XCMG's key focus is the complete satisfaction and success of every machine owner - making your business as profitable as possible.

EXTRA SAFETY FEATURES

XCMG has designed the XE27U with safety at the forefront, including an emergency stop, travel alarm, rotating beacon, and rear view mirrors as standard.

BUCKET KIT

Included with every XE27U is a premium bucket kit for maximum versatility: 300mm, 450mm, 600mm and 1200mm buckets, plus a hydraulic hitch.

UNMATCHED SUPPORT

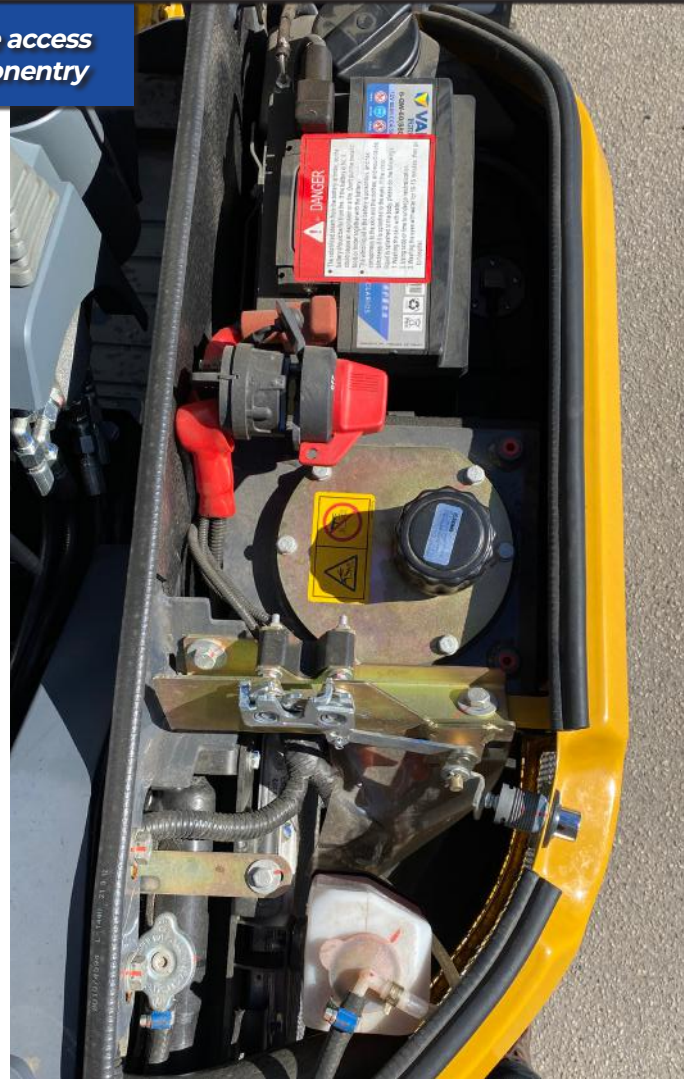
Product experts at your local dealer provide exceptional support throughout your machine's lifetime: operation, maintenance and service from the delivery date through to its very last day on the job.



...built to last.



Easy service access to all componentry



Comfortable operator station with colour display screen



Stable and heavy duty undercarriage

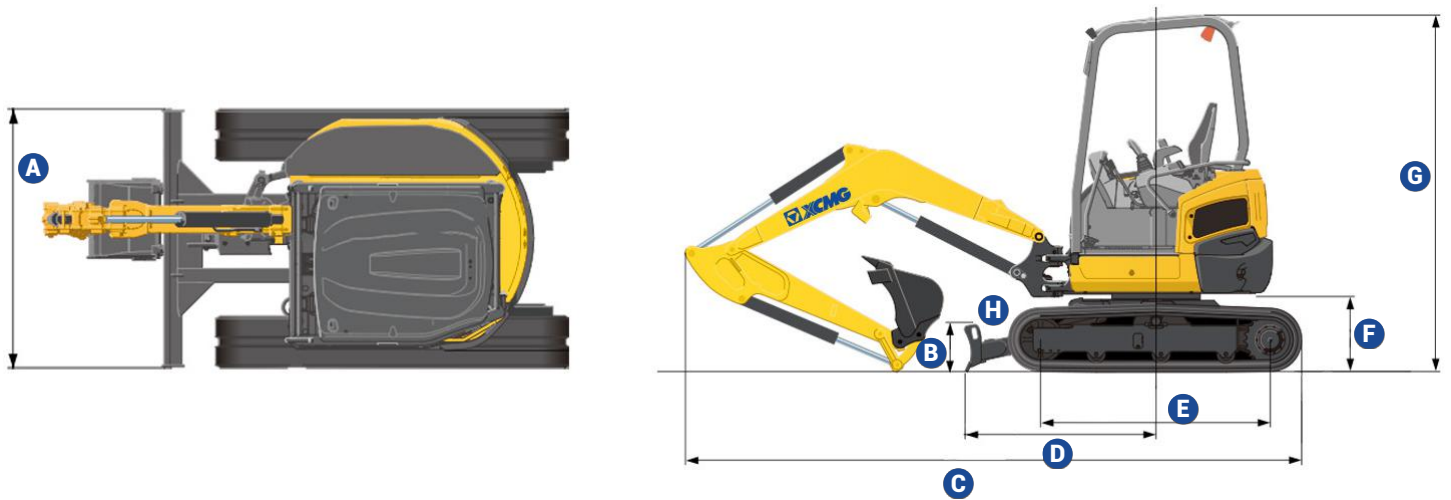


Ergonomic zero tailswing design

XE27U MINI EXCAVATOR



XE27U SPECIFICATIONS



XE27U	A	B	C	D	E	F	G	H
mm	1500	290	4190	1300	1560	535	2580	310

KEY PERFORMANCE SPECIFICATIONS

Key Specs	Operating Weight:	2700 kg
	Engine Model:	Kubota D1105 Euro Stage V
	Maximum Power:	20.9 hp / 15.4 kW @ 2400 rpm
	Maximum Torque:	70.3 nM / 1600 rpm
	Maximum Travel Speed:	3.1 km/h
	Tailswing:	Zero
	Boom Type:	Swing Boom
	Dipper / Boom Length:	1300mm / 2090mm
	Safety Valves:	Yes, Arm + Boom
	Bucket / Arm Digging Forces:	23 / 14 kN
	Swing Speed	10 rpm
Maximum Dig Reach / Depth:	4750 mm / 2800 mm	
Maximum Dump Height:	3120 mm	
Operator Station	Canopy / Cabin Type:	Open Canopy
	Canopy / Cabin Safety:	ROPS / TOPS / OPG
	Seat:	Suspension
Hydraulics	Display Screen	Yes, Included as Standard
	Pump Type:	Load-Sensing Axial Piston Pump w/ Variable Displacement
	Pump Make:	XCMG
	Slew Pump Make	XCMG
	Wheel Motor Make:	XCMG
	Hydraulic Piping:	Single / Bidirectional
	Hydraulic System Flow:	82.8 LPM
Hydraulic Aux1 Flow:	38 LPM	
Additional Features	Track Shoes:	300mm Rubber
	Dozer Blade:	Yes, Included as Standard
	Front Work Lights:	Yes, Included as Standard
	Amber Rotating Beacon:	Yes, Included as Standard
	Emergency Stop:	Yes, Included as Standard
	Rear View Mirrors:	Left + Right
	Lockable Battery Isolator:	Yes, Included as Standard
Bucket/s Included:	300mm + 450mm + 600mm + 1200mm	

Note: specifications listed above are correct at October 2021 and are subject to change any time. For additional information visit www.xcmgmachinery.com.au.