



THE Z4

July 2021

MODEL.

Z4 M40i. (HF92)

Model Highlights:

- 19" M light alloy wheels Double-spoke style
- 800 M Bicolour Cerium Grey with performance tyres
- BMW Head-Up display
- BMW Live Cockpit professional with 10.25" display
- Driving Assistant
- Harman / kardon surround system
- M sport brakes
- M Sport differential
- M Sport seats for driver and front passenger



Consumption:	7.5l / 100km ¹⁾	CO ₂ :	171g / km ¹⁾
0-100km/h:	4.1 sec	Transmission:	8-speed sport automatic
Engine:	6-cylinder	Power/Torque:	285kW / 500Nm
Price incl. GST			\$139,900

Fuel consumption is determined in accordance with the ECE driving cycle (93/116/EC) made up of approximately one third urban traffic and two thirds extra-urban driving (based on the distance covered). CO₂ emissions are measured in addition to fuel consumption. All data is presented based on a vehicle of this model with standard equipment as tested for the German market. Where those vehicles are available in a right hand drive variant, they can be specially ordered from the factory by New Zealand customers. Figures given for unladen weight in kg is based on vehicle with standard equipment and includes a 90 per cent tank filling, 68 kg allowance for the driver and 7 kg allowance for luggage. Optional equipment may increase this figure. The performance and fuel consumption rates listed are based on the use of RON 98 fuel. Actual figures for fuel consumption and emissions will depend on many factors including traffic conditions, driving habits, prevailing conditions and your vehicle's actual equipment, condition and use. Test figures are unlikely to be achieved in real world driving conditions and should only be used for comparing one vehicle with another. Further information about the official fuel consumption and the official specific CO₂ emissions for new passenger vehicles can be found in the 'New Passenger Vehicle Fuel Consumption and CO₂ Emission Guidelines', which are available free of charge at all sales outlets, from Deutsche Automobil Treuhand GmbH (DAT), Hellmuth-Hirth-Str. 1, 73760 Ostfildern, Germany, or at <http://www.dat.de/en/offers/publications/guideline-for-fuel-consumption.html>. Effective from 1st July 2021.

STANDARD EQUIPMENT.

M40i

Transmission and technology

- BMW M Performance TwinPower Turbo inline 6-cylinder petrol engine with Valvetronic, Double VANOS and High Precision Injection
- M Sport Differential, electronically controlled limited slip differential
- Adaptive M Suspension
- 8-Speed Steptronic Sport automatic transmission with gearshift paddles
- Driving Experience Control with SPORT, COMFORT, ECO PRO and ADAPTIVE modes
- Auto Start/Stop function
- Brake pad wear indicator
- Electric power steering with Servotronic
- Fuel tank capacity 52 litres
- Launch Control
- Performance tyres

Exterior design and features

- 19" M light alloy wheels Double-spoke style 800 M Bicolour Cerium Grey with performance tyres
- Exterior trim in Cerium Grey: BMW Kidney grille frame, front air intake inserts, mirror upper housing, rollover bars, model designation badges, tailpipe finishers
- BMW Individual High-gloss Shadow Line, includes the mirror frame and lower housing, window recess cover, rollover protection bars and air breather in high-gloss black
- Kidney frame and tailpipe finishers in high-gloss chrome
- M Aerodynamics package with front apron, side sills and rear apron in body colour with diffuser insert in Dark Shadow metallic
- Automatic folding soft top, black
- Wind Deflector

Light and Sight

- Ambient Interior Lighting
- Adaptive LED headlights
- High-Beam Assistant
- Exterior handle area lighting and interior welcome lights
- Interior and driver's side exterior mirror with automatic anti-dazzle function. Exterior mirrors electrically adjustable and heated, with electric fold-in function and passenger side with automatic parking dipping function
- Heat protection glazing
- Rain sensor
- Follow-me-home function, if the headlight flasher is activated after the ignition is shut off, the low-beam headlights continue to shine for a set time

Driver assistance

- BMW Head-Up Display
- Active Cruise Control with Stop&Go Function
- Driving Assistant, includes:
 - Lane Departure Warning
 - Lane Change Warning
 - Front Collision Warning with brake intervention
 - Crossing Traffic Warning rear
 - Rear Collision Prevention
 - Speed Limit Info
- Parking Assistant, includes:
 - Rear View Camera
 - Parking Assistant
 - Reversing Assistant
 - Lateral Parking Aid
- Speed limiter
- Tyre Repair kit

Safety

- Active Protection
- M Sport Brakes
- Rollover protection system
- Airbags, 4 in total: front airbags for driver and passenger, body protection side airbags deployed from the seat backrests for driver and passenger
- Side protection system
- Central locking with electronic immobiliser
- Dynamic braking lights
- Dynamic Stability Control (DSC), Anti-lock Braking System (ABS), Braking Assistant, Cornering Brake Control (CBC), Dynamic Traction Control (DTC)
- Warning triangle and first aid kit

Entertainment, communication and information

- BMW Live cockpit Professional* with 10.25" instrument display and high-resolution (1920x1080) 10.25" Control Display
- harman / kardon surround sound system, 12 speakers, 365W / 7 channels
- Navigation System Professional with 10.25" Control Display feat. BMW Operating System 7.0 and natural voice recognition
- DAB+ digital radio
- Extended Bluetooth connectivity
- Personal Profile, customised control functions can be saved into online portal

ConnectedDrive features

- Intelligent Emergency Call
- TeleServices
- ConnectedDrive Services* incl. BMW Connected+ and includes free usage of vehicles apps via BMW Online (News and Weather)
- Connected Package Professional incl. Remote Services*, Real Time Traffic Information (RTTI)*, Concierge Services* and Apple CarPlay
- Connectivity via in-built SIM card, 4G LTE network compatible *3 year subscription

Interior design, comfort and equipment

- 1 x 12V power socket, in front storage compartment
- 2 x USB ports:
 - 1 x Type A / 1.5A in the front console area
 - 1 x Type C / 3.0A inside centre console armrest
- Automatic climate control, 2-zone control
- Comfort Access, keyless entry to all doors
- Door sill finishers with 'M' designation, illuminated
- Electric seat adjustment for driver and passenger with memory function
- Floor mats
- Instrument panel and door upper trim in Sensatec
- Interior trim, Aluminium Tetragon
- Luggage capacity 281 litres, with roof open or closed
- Lumbar support for driver and passenger, electric
- M leather steering wheel with multifunction buttons
- M Sport seats for driver and front passenger with integrated headrests
- Seat heating, driver and passenger
- Through-loading system
- Upholstery, Leather 'Vernasca'
- Vehicle Key with 'M' designation

UPHOLSTERY AND TRIM.

M40i

Leather 'Vernasca' / Alcantara Combination



HCNL	Black with Blue Contrast Stitching Black interior colour	NCO	○
------	--	-----	---

Leather 'Vernasca'



MAEY	Ivory White with décor stitching Black interior colour	NCO	○
------	--	-----	---



MAH7	Black with décor stitching Black interior colour		●
------	--	--	---



MAKN	Magma Red with décor stitching Black interior colour	NCO	○
------	--	-----	---



MAPQ	Cognac with décor stitching Black interior colour	NCO	○
------	---	-----	---

Interior Trims.



4KK	Interior trim Aluminium Tetragon		●
-----	---	--	---



4KL	Interior trim Aluminium 'Mesheffect'	NCO	○
-----	---	-----	---




● Standard ○ Optional NCO No Cost Option

Product features, specifications, models and prices are subject to change without notice. The general information in these materials should always be read in conjunction with other specific materials and information available from BMW Group New Zealand. E&OE Effective from 1st July 2021.

WHEELS AND PAINTWORK.

M40i




Wheels.

	19" M light alloy wheels Double-spoke style 799 M Bicolour F: 9J x 19 / tyres 255/35 ZR19 R: 10J x 19 / tyres 275/35 ZR19	1P3	Includes Tyre Repair Kit Not available with Runflat Tyres Note: Snow chains cannot be fitted	NCO	○
	19" M light alloy wheels Double-spoke style 799 M, Jet Black F: 9J x 19 / tyres 255/35 ZR19 R: 10J x 19 / tyres 275/35 ZR19	1P4	Includes Tyre Repair Kit Not available with Runflat Tyres Note: Snow chains cannot be fitted	\$500	○
	19" M light alloy wheels Double-spoke style 800 M Bicolour, Cerium Grey F: 9J x 19 / tyres 255/35 ZR19 R: 10J x 19 / tyres 275/35 ZR19	1P5	Includes Tyre Repair Kit Not available with Runflat Tyres Note: Snow chains cannot be fitted	NCO	●


Non Metallic

	300 Alpine White				●
---	-------------------------	--	--	--	---

Metallic Paintwork.

	475 Black Sapphire			\$1,690	○
	C1D Misano Blue			\$1,690	○
	A83 Glacier Silver			\$1,690	○
	C34 San Fransisco Red			\$1,690	○

BMW Individual Special Metallic Paintwork.

	C37 Frozen Grey II (Must be ordered via BMW New Zealand)			\$6,400	○
---	---	--	--	---------	---

Please note BMW Individual ordering time frames apply. Please contact BMW Group New Zealand for further information

● Standard ○ Optional NCO No Cost Option

Product features, specifications, models and prices are subject to change without notice. The general information in these materials should always be read in conjunction with other specific materials and information available from BMW Group New Zealand. E&OE Effective from 1st July 2021.

OPTIONAL EQUIPMENT.

M40i

1CR	Remote Engine Start Allows for preconditioning of the vehicle (heating in winter, cooling in summer)	\$790	○
24B	Steering Wheel Heating At the touch of a button, the steering wheel heating quickly warms up the steering wheel rim to a pleasant temperature allowing the driver to comfortably and safely steer the vehicle without the encumbrance of gloves.	\$500	○
2VB	Tyre Pressure Indicator , includes tyre temperature display	\$500	○
302	Alarm System The alarm system with anti-theft security system protects the car by emitting a loud audio signal. The system is activated or deactivated by locking and unlocking the vehicle. It monitors all doors as well as the bonnet, tailgate and interior and also has a tilt alarm and an emergency alarm siren.	\$1,200	○
320	Model Designation Deletion	NCO	○
3BE	Mirror Caps Black Must be ordered with BMW Individual High-Gloss Shadow Line with Extended Contents (7M9)	\$200	○
3M2	M Sport Brakes, Red High-Gloss The M Sport brakes are distinguished by exclusive High-gloss Red brake callipers with M designation and outstanding braking performance	NCO	○
3DZ	Without additional designation, deletion of M logo on side panels	NCO	○
3YA	Soft Top Roof, Anthracite Silver Effect	\$600	○
4GQ	M Seat Belts	\$500	○
7M9	BMW Individual High-Gloss Black with Extended Contents , includes the following in high-gloss black: <ul style="list-style-type: none"> • Kidney grille frame • Exhaust tailpipes 	\$700	○

● Standard ○ Optional NCO No Cost Option

Product features, specifications, models and prices are subject to change without notice. The general information in these materials should always be read in conjunction with other specific materials and information available from BMW Group New Zealand. E&OE Effective from 1st July 2021.



BMW Offers & Services.



BMW Financial Services

BMW Group Financial Services is your one stop shop for all your Finance, Leasing and Insurance needs. Each BMW dealership has a dedicated Business Manager who can put together a tailored finance and insurance package, to make getting into your next BMW even easier.

Speak to your Business Manager today about our Finance and Insurance products.



Genuine BMW Service

Quality and safety are the essence of a Genuine BMW Service. When you buy a BMW, you can look forward to superb service and comprehensive customer care.

BMW Service Inclusive is complimentary with all BMW's sold new in New Zealand for a period of 3 years, so you don't have to waste a moment thinking about the cost of maintenance for your vehicle.

For more information visit bmw.co.nz/service



BMW Driving Experience

If you've ever wondered why a BMW is the Ultimate Driving Machine, a BMW Driving Experience course is for you.

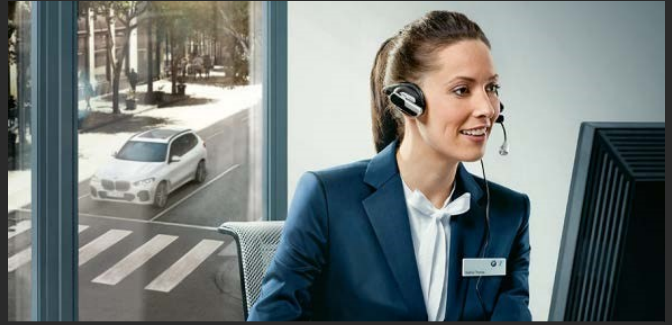
Sign up for a BMW Driving Experience course and you will learn what these remarkable vehicles can really do. More importantly, you will also acquire essential skills that will enhance your driving ability and safety.

The BMW ConnectedDrive. More connected than ever before.

CONNECTED PACKAGE PROFESSIONAL.



Remote Services allows you to remain connected to your vehicle wherever you are, send destination, find your vehicle as well as locking and unlocking your doors.¹



Concierge Services connects the driver to a BMW Call Centre agent who is available as their around-the-clock personal assistant.¹

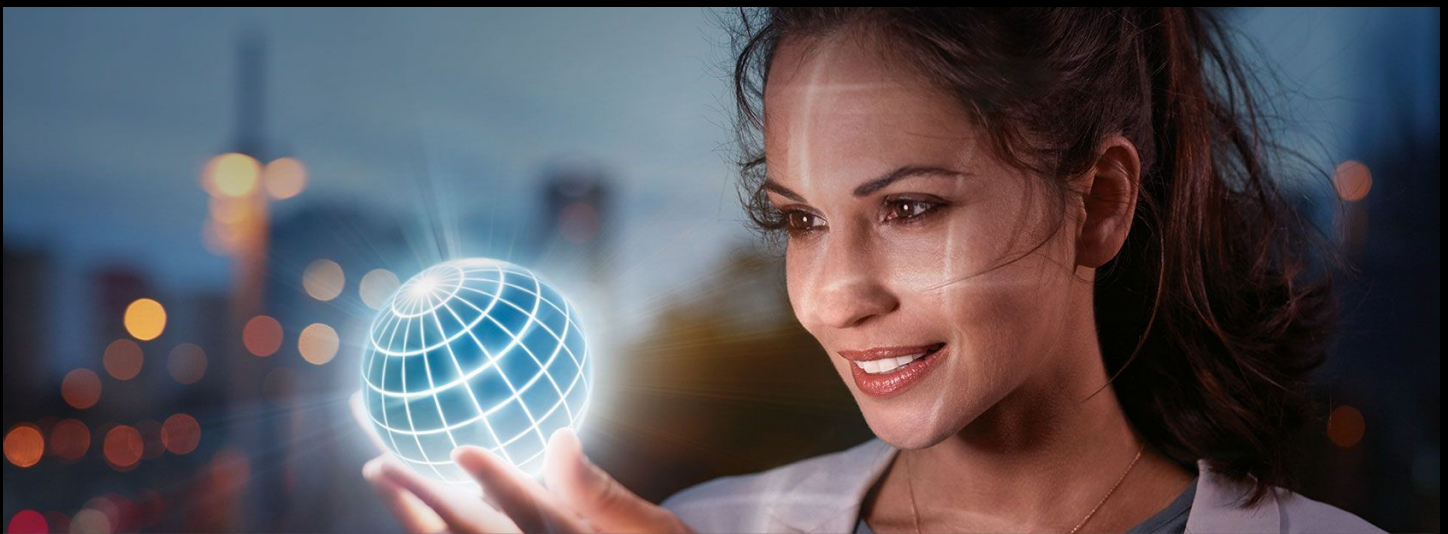


Real Time Traffic Information supplies details about the location and duration of delays, also Hazard Preview.¹



Apple CarPlay preparation enables wireless usage of your iPhone in your vehicle via Apple CarPlay and is operated via the vehicle's user interface.²

The BMW Connected App. Your personal mobility assistant.



The BMW Connected App learns your mobility routines, reads your calendar and knows when you need to leave, providing you with a personal experience that is integrated into your everyday life. The App allows you to fully unleash the capabilities of BMW's innovative technologies intuitively through your smartphone.

The information above is subject to change. Actual Control Display and content may vary from the image shown.

1= Available and active for three years. Can be extended or renewed thereafter at an extra cost. 2= Available and active without runtime limitations. Usage cannot be guaranteed permanently due to potential future developments (of the Service availability and /or Smartphone compatibility/ operating system)

The BMW ConnectedDrive.

More connected than ever before.

BMW LIVE COCKPIT PROFESSIONAL.

The brand new infotainment, navigation and multimedia system (BMW Operating 7.0) provides cutting edge innovations as standard. Incorporating new generations of professional multimedia, BMW Live Cockpit Professional features touch-capable, high resolution control display, fully digital instrument panel and includes the ConnectedDrive digital services below :



BMW Intelligent Personal Assistant allows you to communicate with your vehicle. It acts as a personal assistant and vehicle expert able to remember many of the customer's vehicle settings and learns with each use. It helps you to get to know your BMW even better.



Caring Car in your BMW will look after you. Want to arrive with fresh energy, or relax when stressed? If you say, 'Hey, BMW. I'm tired,' or 'Hey, BMW. I'm feeling stressed,' the BMW Intelligent Personal Assistant will activate the Vitalize or Relax Caring Car Programme.



Automate My Habits is an intelligent feature that learns and automates your preferred settings on request, like turning on the seat heating at setting three when it's cold. You can start enjoying the journey while your BMW takes care of your well-being. More automation options will be added in the future.



Remote Software Upgrade installs the latest software on your BMW. With Remote Software Upgrade, your BMW will always be like new. Convenient, reliable and stress-free – without having to visit your BMW service partner. Upgrades are installed over-the-air, just as they are for your smartphone.

Digital Key.



Why put your key in the ignition if you have your smartphone with you? The Digital Key allows you to lock and unlock your BMW and even start the engine without needing a physical key. It can be downloaded to your Android smartphone using the BMW Connected app and shared with family and friend.



BMW CORPORATE ADVANTAGE. A MORE REWARDING JOURNEY.

As a valued member of the BMW Corporate Advantage programme, you have the exclusive opportunity to enjoy the ultimate reward— getting behind the wheel of the Ultimate Driving Machine. With such a dynamic range of vehicles to choose from, you are sure to find the perfect BMW for your lifestyle.

BMW Corporate Advantage gives you, your spouse and contractors within your organisation access to a range of exclusive benefits, including tailor-made finance solutions, exclusive offers on insurance and lifestyle products, and more.

BMW Corporate Advantage benefits.

- Complimentary 1st year BMW Motor Vehicle Insurance.¹
- Genuine BMW Accessories and Lifestyle voucher valued at \$1,000 (Incl GST).
- Dedicated Corporate salesperson.

Standard BMW benefits.

- 3-year complimentary subscription to BMW ConnectedDrive.
- 5-year warranty and Roadside Assist included.
- 3-year BMW Service included.
- Access to a BMW Genius for ongoing support and training.
- Tailor-made financial solutions offered, with the option of a minimum guaranteed future value.²

Check your eligibility today.
www.bmw.co.nz/corporateadvantage

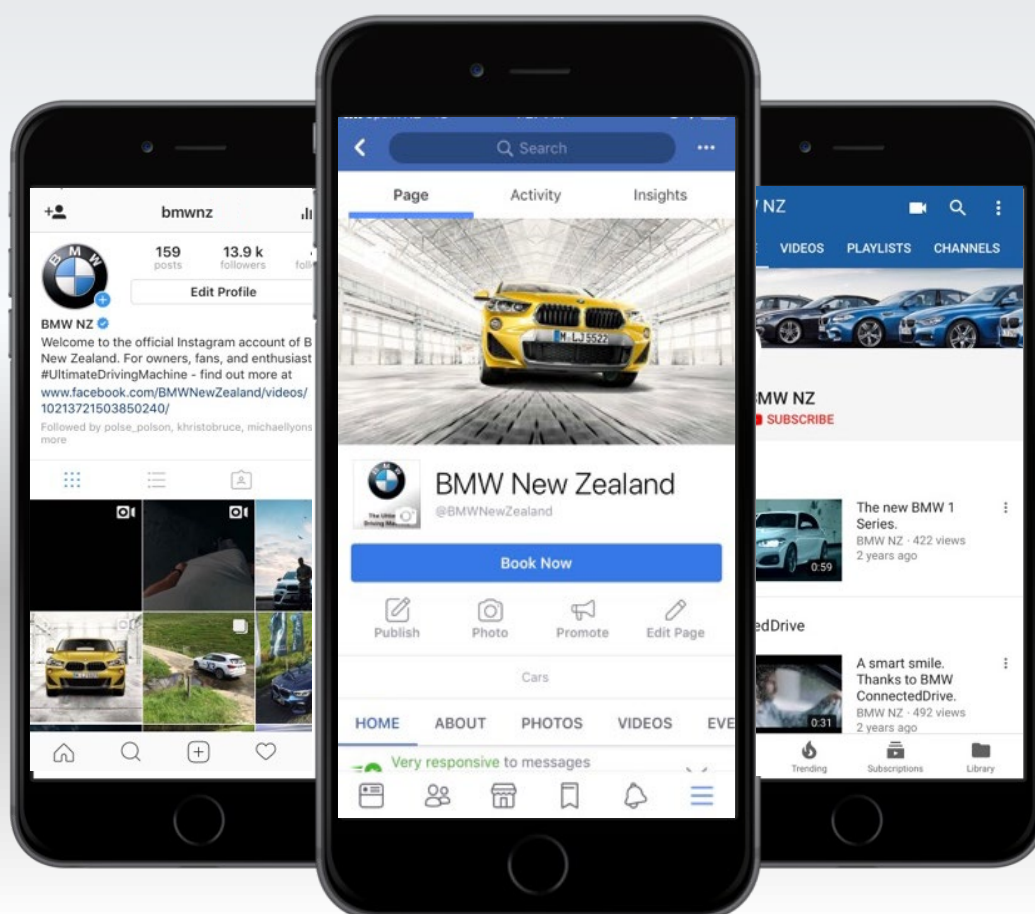
Terms and conditions apply. For full terms and conditions and a full overview of the benefits please refer to www.bmw.co.nz/corporateadvantage. ¹ Provided and underwritten by Prudential Insurance. The 1st year premium for your BMW Motor Vehicle Insurance is complimentary, up to a value of \$2,000 including GST. The balance of the premium is a maximum of \$2,000 including GST, is payable by the Policyholder in advance to Prudential Insurance at the time of policy purchase. Provided and underwritten by Prudential Insurance. ² BMW Financial Services terms, conditions and standard lending offers apply.



IMMERSE YOURSELF IN THE WORLD OF BMW.

Keeping up with the Ultimate Driving Machine has never been easier. Connect with us online and stay up to date with the latest from BMW.

www.bmw.co.nz



www.facebook.com/BMWNewZealand



www.instagram.com/BMWNZ



www.youtube.com/NZBMW