

N-SERIES BACKHOE LOADERS
580SN | 590SN

CASE
CONSTRUCTION



STRONGER
EVERYWHERE

www.casece.com
EXPERTS FOR THE REAL WORLD
SINCE 1842

N-SERIES BACKHOE LOADERS

POWER WHERE YOU NEED IT MOST – EVERYWHERE!

Put the industry's toughest loader/backhoe to work on your jobsite.

Proven performance

Long before we launched the new CASE N Series loader/backhoes, veteran backhoe operators put our machines to work. And they agree. They're four tough machines. Re-engineered from the ground up, the new CASE loader/backhoes deliver industry-leading backhoe breakout force, increased loader lift capacity/reach and best-in-class cab visibility.

Power lift

Our N Series machines out-muscle the competition with as much as 65 percent greater backhoe lift power. With our industry exclusive Power Lift, you'll think twice about hauling an excavator to the job. Plus, Power Lift can be used to break through extreme conditions such as a frost line, dry clay or roots. With the flick

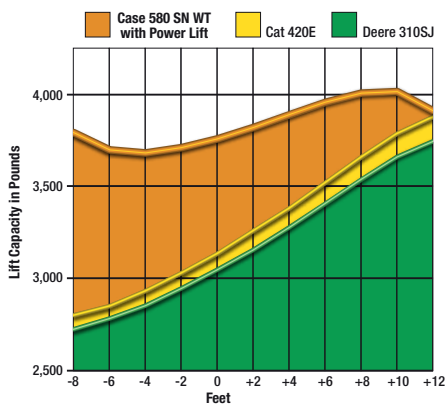
of a switch, a 580 Super N WT with Power Lift has up to 40 percent more capacity than the competition to lift, curl, crane and move objects.

Best-in-class productivity

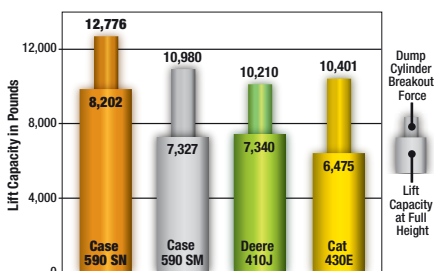
Our new loader arm design will boost your productivity. The loader delivers more breakout force. It has superior reach to dump material into the center of haul trucks with rail extensions. Our new machines have 36 percent greater lift capacity. Plus, we reach deeper dig depths than the previous market leader!



New rear-quarter windows and side lighting



Industry-leading backhoe boom lift



Superior loader lift and breakout force





Optimised hose routing for demolition work

Superior comfort and visibility

When your operation runs day and night, our new cab keeps your operators productive. Floor-to-ceiling windows provide superior visibility. New rear-quarter windows provide easy communication to the back of the machine and improve cross-ventilation comfort. The high-intensity lighting package improves performance by 28 percent, providing superior visibility and overlapping field coverage. And our 'easy flex' side lights offer 45 degree rotation to deliver extra lighting where it's needed most.

New powershift transmission family

The N Series introduces a new transmission family, the Powershift H-type and Powershift S-type, allowing operators to shift from the column. The transmission provides a standard kick-down feature and introduces the industry exclusive SmartClutch modulation.

The SmartClutch feature lets operators customise the transition from forward to reverse to meet the demands of their specific application.

Easy maintenance

Case is famous for easy ground line daily maintenance. Swing-out coolers are easy to access. Axles, with outboard-mounted wet disc brakes, are serviceable without complete disassembly. Add a flip-up hood, spin-on filters, grouped site gauges, and you're saving routine maintenance time. Our customer support team also provides a Customer Assistance Hotline nearly 24 hours a day.

Want more info?

Visit www.CompareCase.com or www.Casece.com. Then, see your CASE dealer for a demonstration, climb inside and put a new N Series loader/backhoe to work.

CASE STANDARD WARRANTY

3 YEARS / 3,000 HOURS

CASE standard warranty is designed to keep your equipment working well while taking away the concerns of the cost and inconvenience of mechanical failure.



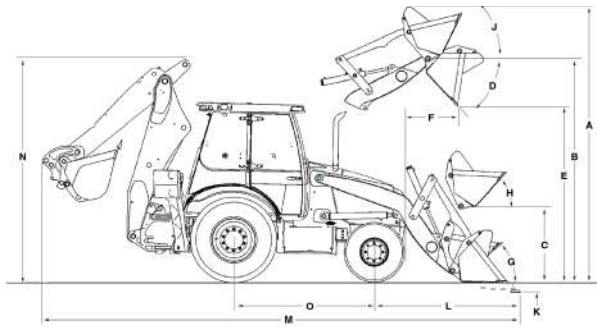
SPECIFICATIONS

	580 SUPER N		590 SUPER N	
Engine	Case 445TA/E3			
Net hp (kW) @ rpm	95 hp (71 kW) @ 2200 rpm		108 hp (81 kW) @ 2200 rpm	
Net max. torque @ 1400 rpm	328 lb.ft (445 N.m) 333 lb.ft (452 N.m) w/viscous fan		380 lb.ft (515 N.m)	
Dig Depth Classification	14 to 15 ft.		15 to 16 ft.	
Standard Transmission	Powershuttle/Powershift			
BACKHOE BREAKOUT				
Bucket	14,223 lbf** (63,267 kN)		15,652 lbf** (69,623 kN)	
Dipper	9,069 lbf** (40,345 kN)		9,478 lbf** (42,16 kN)	
LOADER BREAKOUT				
Bucket	9,807 lbf (43,623 kN)		11,104 lbf (49,393 kN)	
Dipper	10,947 lbf (48,694 kN)		12,776 lbf (56,83 kN)	
Power Lift Option	Available			
Lift capacity to full height ¹	6,703 lb (3040 kg)		7,807 lb (3541 kg)	
Bucket cutting edge width ¹	82 in (2.08 m)		93 in (2.36 m)	
Departure angle - 2WD/4WD	15.3° / 19°		NA / 18.4°	
Operating Weight*	17,226 lb (7,814 kg)		20,458 lb (9280 kg)	
TYRES				
	2WD	4WD	2WD	4WD
-Front tyres	11L x 16, 10-ply rating	12L x 16.5, 8-ply rating	14L x 17.5, 10-ply Industrial Rib	14L x 17.5, 10-ply SGL SS
-Rear tyres	19.5L x 24, 10-ply rating 17.5L x 24, 10-ply rating		21L x 24, 10-ply R4	

* Operating weight may vary depending on machine configuration. ** Equipped with Power Lift Option. ¹ With 4 IN 1 bucket.

LOADER DIMENSIONS

580 SN/590 SN – 4WD, 4 IN 1[®] bucket, 21L x 24 rear tyres.



	580 SN	590 SN
A Overall operating height - Fully raised	13 ft 10.3 in (4.22m)	13 ft 10.1 in (4.22m)
B Height to bucket hinge pin - Fully raised	11 ft 5.7 in (3.50 m)	11 ft 5.6 in (3.50 m)
C Height to bucket hinge pin - SAE carry	12.75 in (324 mm)	12.8 in (325 mm)
D Dump angle @ full height	45°	45°
E Dump clearance @ full height, 43° dump		
- Bucket	9 ft 1.1 in (2.77 m)	9 ft 1.1 in (2.77 m)
- Clam open	9 ft 10.7 in (3.01 m)	9 ft 10.4 in (3.01 m)
F Dump reach @ full height, 45° dump (from bumper)		
- Bucket	27.0 in (685 mm)	27.8 in (707 mm)
- Clam open	13.9 in (353 mm)	13.8 in (351 mm)
G Bucket rollback @ groundline	41°	41°
H Bucket rollback @ SAE carry	46°	46°
J Bucket rollback @ full height	Adjustable	Adjustable
K Digging depth below grade		
- Bucket flat	5.9 in (151 mm)	5.9 in (150 mm)
- Clam open (dozing)	3.5 in (88 mm)	3.5 in (89 mm)
L Reach from front axle centerline - Bucket on ground	6 ft 0.5 in (1.99 m)	6 ft 0.5 in (1.99 m)
M Overall transport length	23 ft 1.2 in (7.04 m)	23 ft 7.4 in (2.36 m)
N Height - Transport	11 ft 6.9 in (3.53 m)	11 ft 7.3 in (3.54 m)

CASE CONSTRUCTION EQUIPMENT
CONTACT INFORMATION
AUSTRALIA
31-53 Kurrajong Road
St Marys, NSW 2760

CASE Customer Assistance
1300 99 CASE

NOTE: CASE provides specific outfits for various countries and many optional fittings (OPT). The illustrations on this or other leaflets may relate to standard or optional fittings. Please consult your CASE dealer for any information in this regard and any possible updating on components. CNH Industrial reserves the right to modify machine specifications without incurring any obligation relating to such changes.