

Ranger

2024.50MY



Ford

Bigger, tougher, smarter



Say hello to the best Ranger ever built.
Designed and engineered by Ford Australia – but made for over 180 countries –
this is the perfect partner for work, family and play. Live your Ranger life your way.



The Ford Ranger has undergone unrelenting global testing from sub-zero to +50° celsius temperatures to ensure it's robust, rugged and capable. Its high-strength steel frame and steel body ensure the Ranger's Built Ford Tough reputation for quality, durability and strength.

Vehicle undercarriage should be cleaned with fresh water after driving on sand.

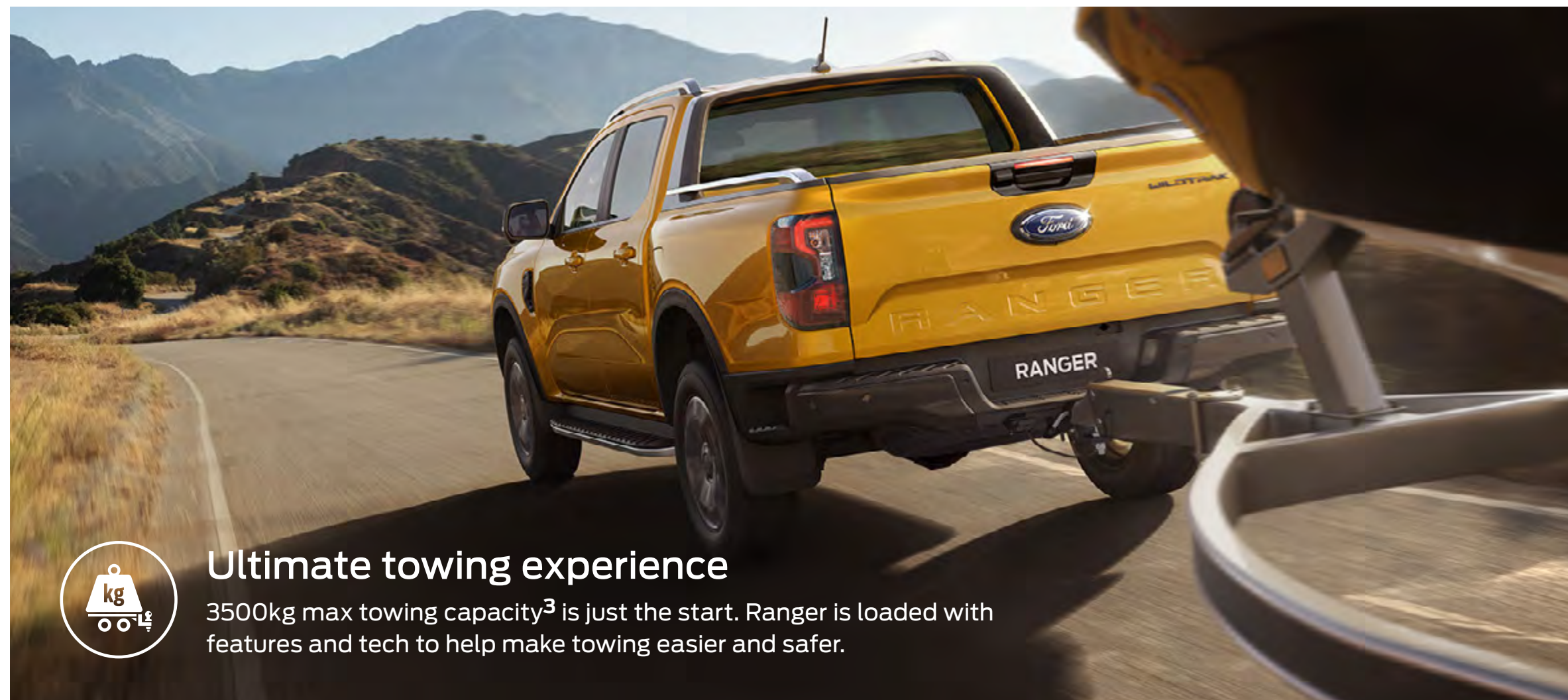


V6 3.0L diesel power

A powerful premium 3.0-litre V6 Turbo Diesel engine¹ headlines a range of diesel powertrains.

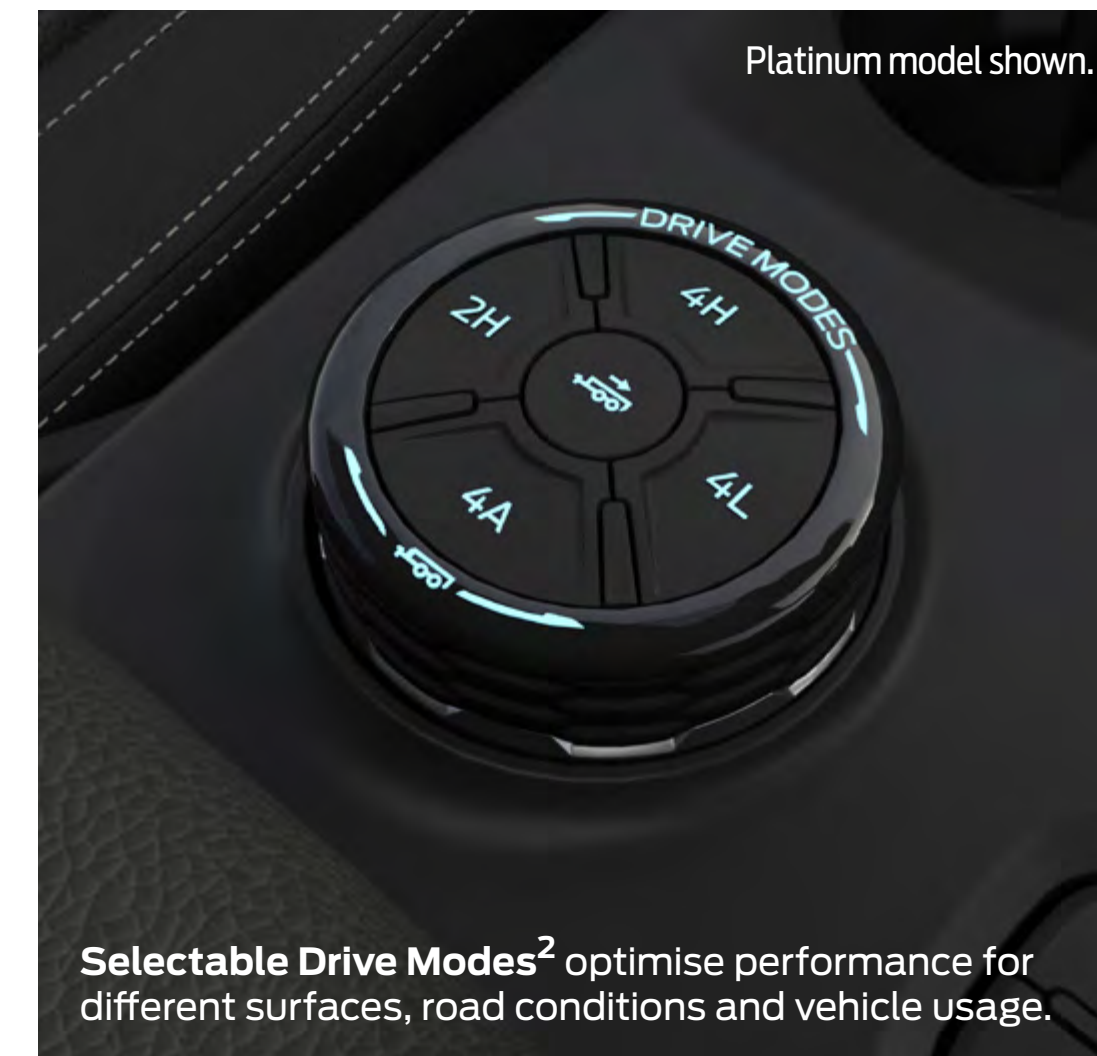
Power & capability

A range of diesel powertrains and automatic transmissions together with selectable drive modes² make the Ford Ranger ready to tackle almost anything.



Ultimate towing experience

3500kg max towing capacity³ is just the start. Ranger is loaded with features and tech to help make towing easier and safer.



Platinum model shown.

Selectable Drive Modes² optimise performance for different surfaces, road conditions and vehicle usage.

Our most versatile Ranger ever

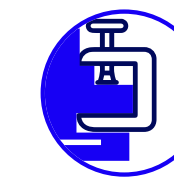
Ranger helps you make light work of any job, with integrated rear box step⁴, Cargo Management System, a wider load box that fits 'Euro' pallets (1,200mm x 800mm) and tailgate work bench.



Rear box step

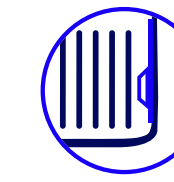
A tough integrated step⁴ makes accessing the cargo area easier and safer than ever before.

Better ways to work



Clamp pockets⁵

On pick-up models, two clamp pockets on the end of the tailgate allow you to clamp timber or tools to the tailgate work bench. They're concealed by spring-loaded capping when not in use.



Cargo management system⁶

On selected models, tie down cleats can be configured to your specific needs, with an adjustable internal load rail on each side of the bed. Cleats slide and lock into 9 locations and are load rated to 250kg.



Fits a pallet

Ford Ranger has a wide track providing more room between the wheel arches. You can load a standard sized 'Euro' pallet (1,200mm x 800mm) in the bed.



Improved bedliner

The ribs on the floor of the moulded bedliner⁷ are wider, offering more surface area to better grip cargo, and a more comfortable surface to kneel on.



Zone lighting⁸

On selected models, a network of lights including headlamps, external mirror puddle lamps and rear box lamps work together to illuminate the perimeter of the vehicle so you can work or play into the night.



Flexible rack system⁹

On selected models, the flexible rack system with the sliding load rack easily slides and locks into five positions along the tub, and in conjunction with the folding roof racks, makes carrying long items easy.

Flexible rack system



Driver Assistance



Active Park Assist 2.0¹⁰

On selected models, Active Park Assist 2.0 helps reduce the stress of parking by taking over the steering, shifting, braking and acceleration to navigate parallel or perpendicular parking spaces with ease. The system also includes Park Out Assist, which provides assistance when exiting a parallel parking spot.



Blind Spot Monitoring with Cross Traffic Alert¹¹ & Trailer Coverage¹²

Available on pick-up models, this feature helps you change lanes, alerts you when a vehicle enters the blind spot zone and will even resist the lane change if the driver misses the warning. Cross-Traffic Alert warns of traffic approaching from the sides when the vehicle is in reverse.



Intelligent Adaptive Cruise Control with Stop & Go, Traffic Sign Recognition and Lane Centring¹³

On selected models, this feature allows you to maintain a preset speed and distance from the vehicle ahead, with Traffic Sign Recognition automatically adjusting to the posted speed limit. If traffic slows in front of you, the vehicle will automatically slow down and come to a stop and then return to your set cruising speed once traffic clears. Plus, Lane Centring helps keep your vehicle centered in the lane.



360-Degree Camera¹⁴

On selected models, offers a bird's-eye top-down view around your vehicle, making it easier than ever to navigate tight spaces and crowded parking lots.



5 Star Safety Rating

Ranger includes a network of safety features and smart driver assistance technology, working together to protect you. Drive with confidence knowing that the Ford Ranger¹⁵ has achieved the maximum ANCAP safety rating of 5-stars.

Effortless interactivity

The Ford Ranger lets you experience a whole world of connectivity,

with wireless charging,¹⁶ wireless connection and the interactive SYNC® 4A¹⁷ infotainment system.

SYNC® 4A¹⁷

An interactive in-vehicle communication and entertainment system with a host of features, made easier by the system showing your last 5 actions, wireless smartphone integration, and a 10.1-inch or 12-inch touchscreen.

Wireless Charging Pad¹⁶

On selected models, avoid the hassle of having to plug in your phone: simply place it on the Ranger's wireless charging pad and you're good to go.



Wireless Connection

Connect to Apple CarPlay™¹⁸ and Android Auto™¹⁸ without a cable in sight. This cordless connection makes life easy and uncluttered.

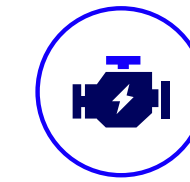
Ranger connects with you

Every Ranger comes fitted with an embedded modem known as FordPass²⁰ Connect.

Once activated, using the FordPass App on your smartphone you can locate your vehicle, lock and unlock the doors, and even start the engine remotely.



Remote start to heat or cool cabin to last known setting



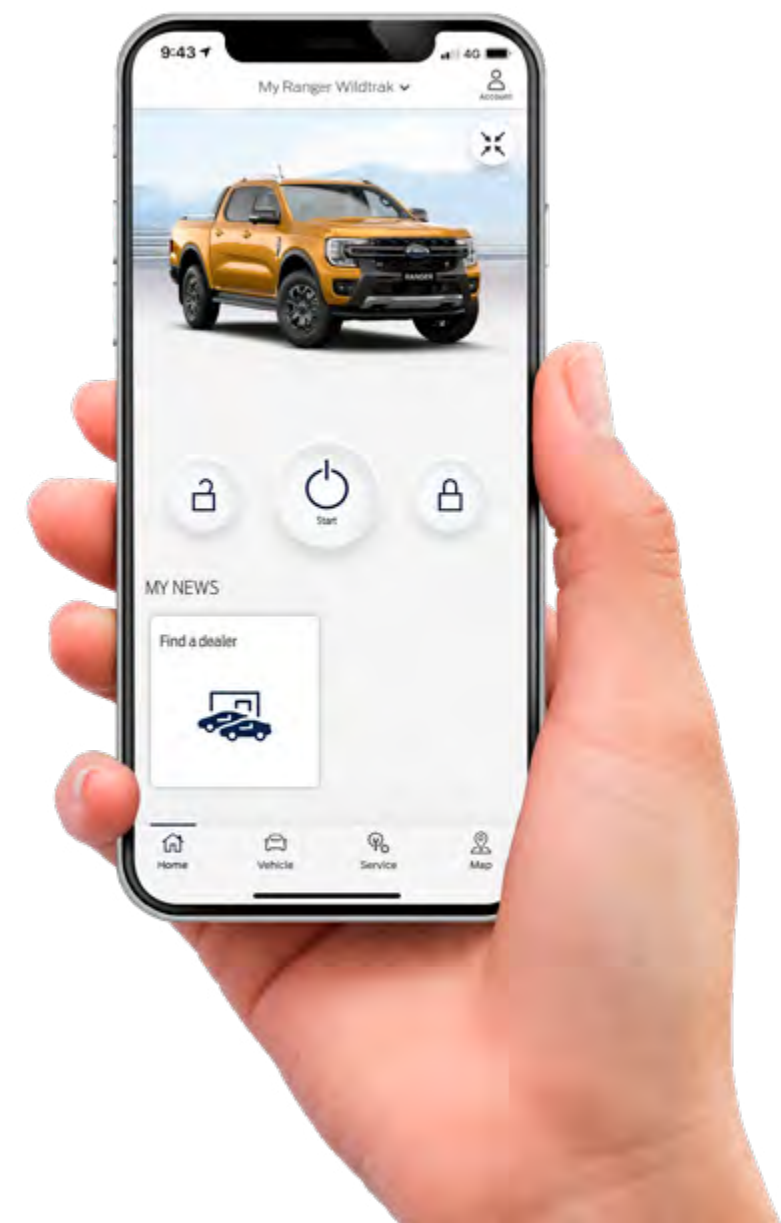
Receive Health Alerts or check Vehicle Status



Check your fuel level remotely

Reverse your trailer like a pro

On selected models, Pro Trailer Backup Assist™¹⁹ makes reversing with a trailer as easy as turning a dial. After entering a few measurements into the system, the camera then tracks the trailer position. Simply rotate the dial in the direction you want the trailer to go and the system controls the steering wheel.



Personalise your Ranger

There's no better way to personalise your Ranger than with the wide range of Ford options and accessories available.

From fridges and driving lights, to canopies and bull bars, you'll find lots of options to make your Ford uniquely your own via the factory or at one of our nation-wide Dealers.



Vehicle shown fitted with optional accessories.



Genuine Quality

Every Ford Genuine and Ford Licensed Accessory has undergone a rigorous evaluation process by Ford engineers to ensure it's fully compatible with your vehicle for optimal integration and performance.



Five Year Warranty

Enjoy complete peace of mind with all Ford Genuine and Ford Licensed Accessories, backed by a full Ford Warranty of up to 5 Years and unlimited kilometres.²¹



Australia Wide

Our vast national network of Ford Dealers means there's a fitment centre conveniently located near you. Always up-to-date with thorough knowledge of the newest products and latest technical information, your local Ford Dealership is the perfect place for all your accessory needs.

Ford Factory Fitted

You can also choose from our range of Ford Factory Fitted options, conveniently fitted to selected Ranger models in the factory. These genuine parts include the Flexible Rack System, roller shutters, canopies, wheels and tyres plus more – with the range continuing to expand over time.



Vehicle shown fitted with optional accessories.



4X4 ACCESSORIES

Ford has joined forces with ARB to create an exciting range of 4x4 accessories designed for the Ford Ranger. You can choose from a large selection of ARB Ford Licensed Accessories at your local participating Ford Dealer, backed by Ford's 5 year unlimited kilometre warranty²² when fitted to your new Ranger prior to delivery.

Ranger ownership experience



We're constantly introducing new tools and services, designed to adapt to your needs throughout the life of your vehicle.



Got questions? Speak with our Ranger Experts. Get personalised expert advice to learn about the advanced features of the Ford Ranger, or even buying advice on what model best suits your lifestyle. Our Experts can be accessed via ford.com.au/showroom/ford-expert/. If available you can speak to them live or make a booking for a future appointment, all at a time convenient to you.



The Discover Your Ford learning hub is available to help you with everything from connecting FordPass to making the most of Drive Modes. For more information, visit ford.com.au/support/discover-your-ford

Ford Insure²³

Ford Genuine Parts maintain the integrity of your car by ensuring it performs the way it's meant to.

It's the same with Ford Insure. Because it's made specifically for your Ford, it offers these key features to restore your car to how it was before the accident:



3 Year New for Old Replacement²⁴

If your vehicle is accidentally damaged beyond economic repair and less than 3 years old, you could be eligible to replace it with a new one



New Genuine Parts²⁵

Look after the integrity of your vehicle, by using only New Genuine Parts, when possible



Choice of Repairer²⁶

Provides you flexibility with your choice of repairer, when possible



Flexible Payment Options²⁷

Offers you both annual or monthly payments

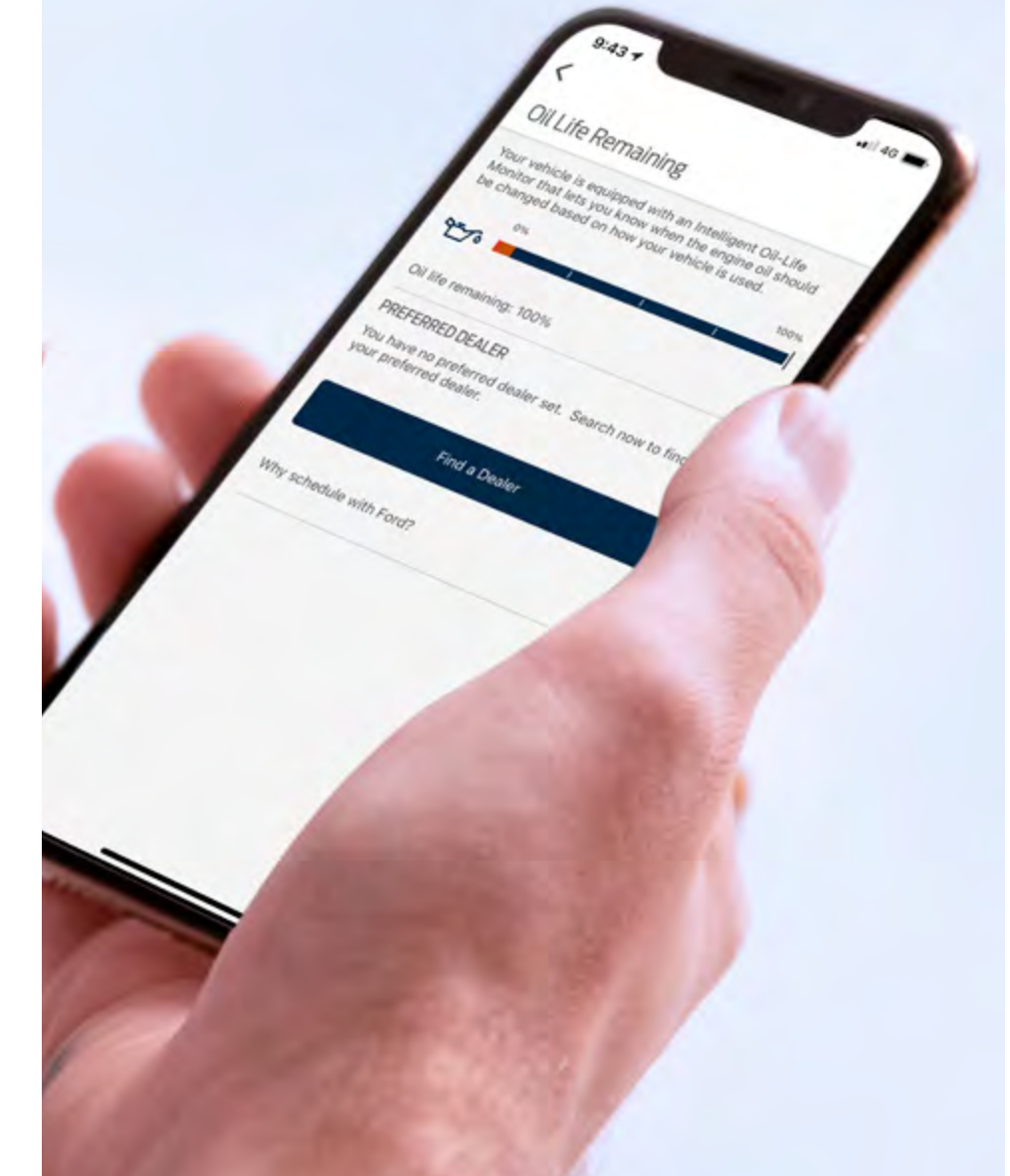


For more information, visit ford.com.au/owners/insurance

Service made easy



Intelligent Oil Life Monitoring System (IOLM)



When you service at a Ford Dealer with our factory trained technicians, your peace of mind is our top priority.

Ford Dealers use Genuine Ford Parts made for your vehicle (where possible) and provide you with a vehicle health report, so you know your vehicle is being maintained the way it should.

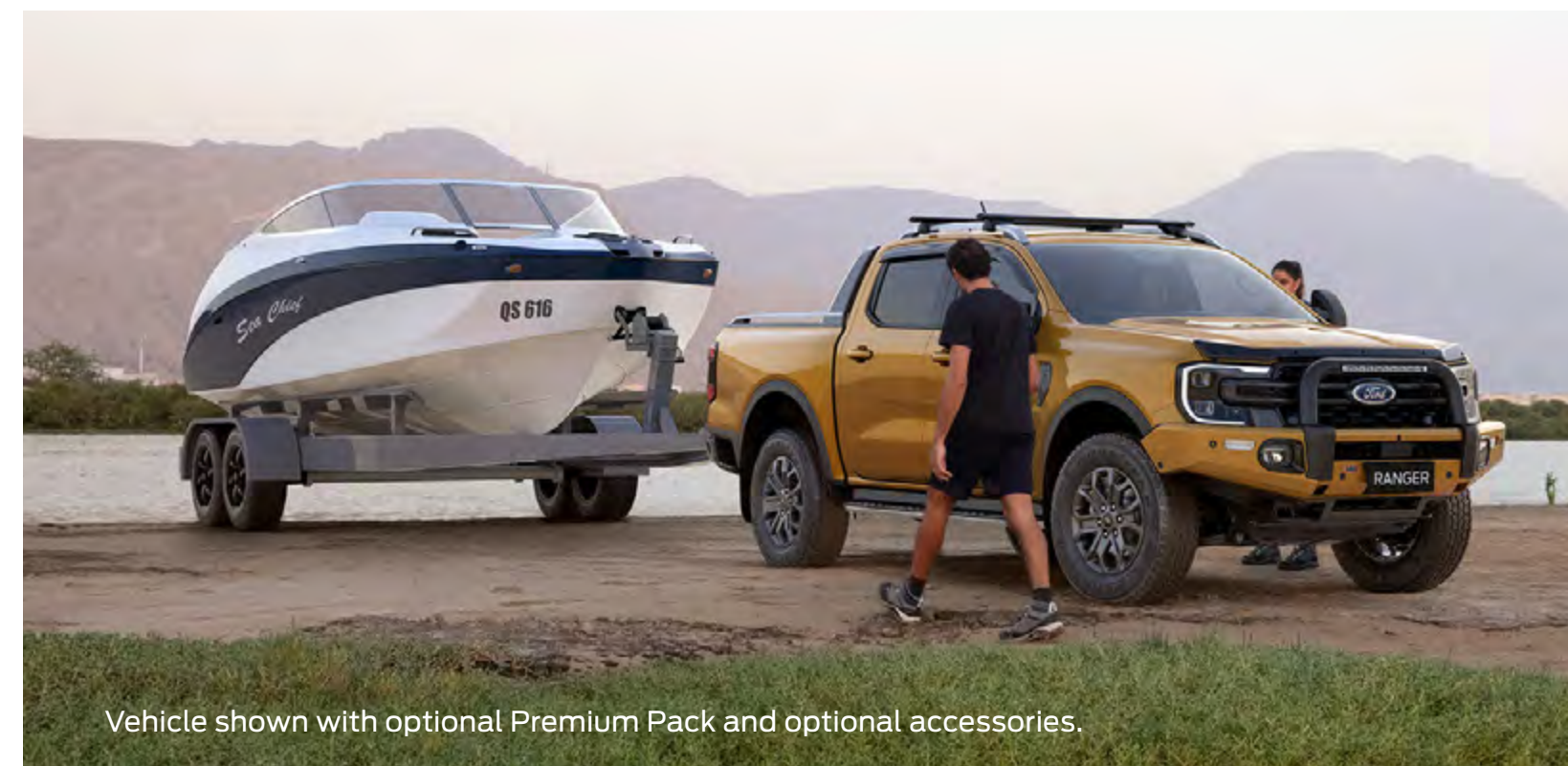
Service Loan Car²⁸

So you can stay on the road when you're getting your car serviced, you can take advantage of the Ford Service Loan Car program.

Roadside Assistance²⁹

Enjoy Ford National Roadside Assistance with your Ranger purchase until your vehicle reaches 7 years of age, available each time a General Service is completed by a participating Ford Dealer. Retail Customers also receive Auto Club Lifestyle Membership.

Discover the full range of Ford service benefits by visiting ford.com.au/owners/service



Vehicle shown with optional Premium Pack and optional accessories.

Smart oil servicing

The Intelligent Oil Life Monitor is a smart system that measures the performance of your vehicle's oil and alerts you that the oil needs changing via the instrument cluster or FordPass²⁰ App.





The Range

Ranger XL

Ranger XLS

Ranger XLT

Ranger Sport

Ranger Wildtrak

Ranger Platinum



Capable and reliable, Ranger XL is ready to work



With a black grille and 16-inch alloys, it's as capable as it is comfortable



Tough, comfortable and connected, it's all you need for work, family & play



Modern dark accents, 18-inch alloy wheels and ebony interior finish



Distinctive appearance, premium interiors and packed with technology



Packed with features and the ultimate blend of premium luxury for work, family & play.

Choose your colour



Arctic White



Aluminium**



Meteor Grey*



Shadow Black*



Blue Lightning**



Luxe Yellow***



Equinox Bronze**

*Prestige paint colours available at additional cost †Not available on Raptor #Not available on Platinum ^Not available on XL or XLS ~Wildtrak exclusive colour *Platinum exclusive colour

Contact us

If you have any questions or concerns, please contact our Customer Relationship Centre on 13 FORD (13 3673) or email foacust1@ford.com

Discover more at ford.com.au

1. Standard XLT 4x4 Double Cab Cab-Chassis and Platinum. Available at additional cost on 4x4 XLT Double Cab pick-up, Sport & Wildtrak.

2. Some drive modes available on 4x4 only. Drive modes not available on XL models. Rotary dial to change drive modes is standard on Sport, Wildtrak, Platinum and Raptor models only. A push button to change drive modes is standard for XLS & XLT models. Driver-assist features are supplemental and do not replace the driver's attention, judgment and need to control the vehicle. May not operate at certain speeds, or in certain driving, road or weather conditions. See Owner's Manual for more information.

3. Maximum towing capacity-braked using a Genuine Ford tow pack (Standard on XLT, Sport, Wildtrak and Platinum models. Optional as part of a pack at additional cost on XL and XLS). Subject to State and Territory regulations. To comply with these limits, occupants and / or luggage may need to be restricted to not exceed the GCM and GVM limits. For further details regarding passenger and luggage restrictions, please consult your authorized Ford Dealer and / or refer to the Owner's Manual.

4. Only on pick-up models, excluding Raptor.

5. Only on pick-up models.

6. Standard on Wildtrak and Platinum. Available as part of a pack at additional cost on 4x4 XLT pick-up models and Sport.

7. Not available on chassis cab models. Standard on XLT Double Cab, Sport, Wildtrak and Platinum pick-up models. Not available on XL, XLS or XLT Super Cab and Raptor models.

8. Zone Lighting standard on Wildtrak, Platinum and Raptor only. Optional as part of a pack at additional cost on XLT 4x4 and Sport pick-up models. Not available on XL, XLS, XLT 4x2 or XLT Chassis Cab. Zone Lighting will not operate if battery charge is insufficient. The length of time that Zone Lighting will operate depends on the battery charge, the types of lights fitted to the vehicle (LED or Bulb) and other electrical loads connected to the vehicle. The system will automatically turn off after a period of time to preserve the battery's engine starting performance.

9. Standard on Platinum. Available at an additional cost on Sport and Wildtrak. Flexible Rack System has a maximum load limit 80kg (dynamic) and 250kg (static). Manual set-up required. Removal of antenna mast recommended when cargo positioned over antenna. Removal may affect availability of radio, satellite and connected services.

10. Available on Wildtrak, Platinum and Raptor only. Driver-assist features are supplemental and do not replace the driver's attention, judgment and need to control the vehicle. May not operate at certain speeds, or in certain driving, road or weather conditions. See Owner's Manual for more information.

11. Standard on pick-up models only. Driver-assist features are supplemental and do not replace the driver's attention, judgment and need to control the vehicle. May not operate at certain speeds, or in certain driving, road or weather conditions. See Owner's Manual for more information.

12. Trailer Coverage system (requires a Genuine Ford Tow Pack) supports conventional trailer dimensions: up to 2.4m wide (measured at trailer front) and up to 10m long from the rear of your vehicle. Drivers will need to create a profile of their trailers in SYNC to support this system.

13. Standard on XLT, Sport, Wildtrak, Platinum and Raptor. Not available on XL, XLS models. Driver-assist features are supplemental and do not replace the driver's attention, judgment and need to control the vehicle. May not operate at certain speeds, or in certain driving, road or weather conditions. Intelligent Adaptive Cruise Control (iACC) uses various data to adjust the set speed of the vehicle to the speed limit detected by the system. The iACC system will not always detect the correct speed limit and may set a vehicle speed that is above or below the actual speed limit. If the system does this, it can be overridden by the driver applying the brake or accelerator or via steering wheel controls. In some circumstances, iACC will use map data to set the vehicle speed. Ford recommends keeping map data updated by fully activating the vehicle's FordPass Connect modem and enabling Connected Navigation Services. Connected Navigation Services are included for 1 year from the Ford Express

Running a fleet?

Our Ford Fleet team is here to assist you in any way we can. Please email askfleet@ford.com

New Vehicle Warranty start date and available ongoing subject to payment of a subscription fee. Adaptive Cruise Control and Lane Centring has a minimum operating speed of 20km/hr. Detection of lower speed limit will result in system entering standby when iACC is active. The Stop and Go functionality of this system operates as low as 0km/hr in traffic jam situations. Lane Centring feature should be disabled via the Driver Assistance menu in SYNC before towing. Customers should read the Owner's Manual for details of the limitations of the iACC system before activating. Speed Sign Recognition will not always detect the correct speed limit and may display a speed that is above or below the actual speed limit. On Ranger models with Satellite Navigation, in some circumstances, Speed Sign Recognition will use map data to display the speed limit on the digital instrument cluster. Ford recommends keeping map data updated by fully activating the vehicle's FordPass Connect modem and enabling Connected Navigation Services. Connected Navigation Services are included for 1 year from the Ford Express New Vehicle Warranty start date and available ongoing subject to payment of a subscription fee.

14. Standard on Wildtrak, Platinum and Raptor only. Optional as part of a pack at additional cost on XLT 4x4 and Sport pick-up models. Not available on XL, XLS, XLT 4x2 or XLT Chassis Cab. Driver-assist features are supplemental and do not replace the driver's attention, judgment and need to control the vehicle. May not operate at certain speeds, or in certain driving, road or weather conditions. See Owner's Manual for more information.

15. The Raptor variant of the Ranger is unrated.

16. Wireless Charging only available with compatible phones. Standard on Sport, Wildtrak, Platinum and Raptor models. Not available on XL, XLS & XLT.

17. Don't drive distracted. Use voice operated systems where possible and don't use handheld devices while driving. Some features may be locked out while the vehicle is in gear. Not all SYNC features are compatible with all phones. SYNC screen appearance and functionality may change over time due to software updates. 10.1-inch touchscreen on XL, XLS, XLT and Sport models. 12-inch touchscreen on Wildtrak, Platinum and Raptor.

18. Apple CarPlay™/Android Auto™ requires compatible phone with compatible version of Apple iOS/Android™ (as applicable) and active data service. SYNC does not control Apple CarPlay™/ Android Auto™ while in use. Apple/Google and other third parties are responsible for their respective functionality. Message and data rates may apply. Apple CarPlay, Siri Eyes Free, iPod and iPhone are trademarks of Apple Inc. registered in the US and other countries. Android Auto and Google Maps are trademarks of Google Inc. Ford Applink® is available on selected SYNC models and is compatible with select smartphone platforms. Warning: Local laws prohibit some phone functions while driving. Check your local road rules before using these functions.

19. Standard on Wildtrak, Platinum and Raptor. Available as part of a pack on selected XLT and Sport pick-up models at an additional cost. Driver-assist features are supplemental and do not replace the driver's attention, judgment and need to control the vehicle. May not operate at certain speeds, or in certain driving, road or weather conditions. See Owner's Manual for more information.

20. Use of FordPass is subject to the FordPass Terms and Privacy Policy available on ford.com.au/fordpass and requires a compatible mobile device, internet access and software (including software updates from time to time). FordPass functionality and appearance may change over time due to software updates. You are responsible for internet access, mobile network data and voice call services required for your use of the FordPass App on your mobile device, including associated fees. The FordPass App and FordPass Connect modem can only work when both are connected to the telecommunications network. The FordPass Connect modem will only function on the 3G or 4G telecommunications networks. When these networks are no longer available, the modem will stop functioning and the connected services and all data transmission via the modem will cease. Ford cannot guarantee that FordPass will be in fully operating condition at all times and the FordPass App may be unavailable or particular FordPass services interrupted. Ford is not responsible for any limitations or restrictions of the telecommunications network or of your mobile device. Warning: Local laws prohibit some phone functions while driving. Check your local road rules before using these functions. Use Remote Vehicle Start and Stop responsibly and only in well ventilated areas where you are aware of your vehicle's surroundings.

21. Warranty conditions apply. 5 year/unlimited km Ford Express New Vehicles Warranty applies to new, demonstrator and service loaner vehicles. Our goods come with consumer guarantees that cannot be excluded under the Australian Consumer Law. Our warranty does not limit and may not exceed your rights under those guarantees.

22. When fitted to your new vehicle prior to delivery. For full details please visit our Warranties page at: <https://www.ford.com.au/owners/warranties/>.

23. While all reasonable skill and care has been taken in preparation of this it should not be construed or relied upon as a substitute for specific advice on your insurance needs. The advice is not based on your personal objectives, financial situation or needs. Accordingly, you should consider how appropriate the advice is to those objectives, financial situation and needs before acting on the advice and, before buying the product, you should read the current Product Disclosure Statement (PDS) and Target Market Determination (TMD) prepared by the insurer, HDI Global Specialty SE – Australia, ABN 58 129 395 544, AFSL 458776 ("HDI"). Both the PDS and the product TMD are available at wtwco.com/fordinsure. WTW receives commission benefits from the insurer. These fees and commission are disclosed in the WTW FSG and relevant client documentation. This insurance product is arranged by Ford Motor Company of Australia Pty Limited ABN 30 004 116 223 ("Ford Australia") or a participating Ford Dealer acting as a distributor of WTW for this product. In arranging this insurance, Ford Australia and participating Ford Dealers act on behalf of WTW and not as your agent. You should review and understand the WTW FSG. If you purchase this insurance Ford Australia and your participating Ford Dealer will receive a commission from WTW. For further information or assistance please go to www.wtwco.com/fordinsure or call us on 13 FORD (3673). WTW are acting as agent of HDI Global Specialty SE- Australia under a binding authority agreement.

24. If your new vehicle is within 3 years of the first registration and is involved in a claim that is assessed a Total Loss, it may be replaced with a new vehicle of the same make and model, where a replacement vehicle is available. If the same make and model is not available, the Insurer may replace your vehicle with the nearest equivalent or suitable replacement. Refer to the Ford Insure PDS for full details.

25. Some insurance companies may use repairers that could use non genuine parts to repair your vehicle. If your claim is accepted the insurer will use Genuine Parts when available. If not available, the insurer may use genuine reconditioned or recycled parts or ADR certified new, recycled or reconditioned parts. Refer to the Ford Insure PDS for full details.

26. The Insurer may authorise repairs at your repairer of choice; pay you the reasonable costs of repairing your vehicle; or move your vehicle to another repairer that is agreed upon. Refer to the Ford Insure PDS for full details.

27. Premiums are payable annually or monthly, subject to minor adjustments (upwards or downwards) due to rounding and financial institution transaction fees apply. Refer to the Ford Insure PDS for full details.

28. Available at participating dealers on scheduled services or overnight warranty repairs. Private and Blue, Silver and Gold Business Fleet customers only. Provision of a Service Loan Car may be dependent on advanced booking and availability. See www.ford.com.au/service/t-and-c for full terms.

29. Available to Private and Blue Business Fleet customers with vehicles up to 7 years old from date of first vehicle registration. Roadside Assistance and Auto Club Lifestyle Membership is included for 12 months or until your next eligible standard service (whichever occurs first) at a Ford Dealership. Customers must comply with scheduled servicing intervals to maintain continuity of membership. See www.ford.com.au/service/owners/t-and-c for full terms.

Specifications listed in the following pages

4x2 | XL, XLS, XLT Ranger 2024.50MY Specifications

| | XL | XL | XL | XLT |
|---|-------------------------------------|------------------------------------|---------------------------------|---------------------------------|
| | 4x2 Hi-Rider Single Cab Cab-Chassis | 4x2 Hi-Rider Super Cab Cab-Chassis | 4x2 Hi-Rider Double Cab Pick-up | 4x2 Hi-Rider Double Cab Pick-up |
| Engine | 2.0L Single Turbo | 2.0L Single Turbo | 2.0L Single Turbo | 2.0L Bi -Turbo |
| Maximum Power | 125kW @ 3,500rpm | 125kW @ 3,500rpm | 125kW @ 3,500rpm | 154kW @ 3,750rpm |
| Maximum Torque | 405Nm @ 1,750-2,500rpm | 405Nm @ 1,750-2,500rpm | 405Nm @ 1,750-2,500rpm | 500Nm @ 1,750-2,000rpm |
| Transmissions | | | | |
| 6-speed automatic transmission | S | S | S | – |
| 10-speed automatic transmission | – | – | – | S |
| Driveline | | | | |
| RWD | S | S | S | S |
| Part-time 4x4 | – | – | – | – |
| Full-time 4WD | – | – | – | – |
| Selectable Drive Modes ¹ : | | | | |
| - Normal | – | – | – | S |
| - Eco | – | – | – | S |
| - Tow / Haul | – | – | – | S |
| - Slippery | – | – | – | S |
| - Mud / Ruts ² | – | – | – | – |
| - Sand ³ | – | – | – | – |
| - Sport | – | – | – | – |
| - Baja ⁴ | – | – | – | – |
| - Rock Crawl ⁵ | – | – | – | – |
| Fuel | | | | |
| Combined Fuel Economy (L/100km)(Auto) ⁶ | 7.6 | 7.6 | 7.8 | 6.9/7.5 ⁷ |
| CO ₂ Emissions (g/km)(Auto) ⁶ | 199 | 199 | 204 | 182/196 ⁷ |
| Fuel Tank Capacity (L) | 80 | 80 | 80 | 80 |
| Fuel Type | Diesel | Diesel | Diesel | Diesel |
| Vehicle Masses (kg) | | | | |
| Gross Combined Mass ⁸ | 6200 | 6200 | 6200 | 6250 |
| Gross Vehicle Mass ⁸ | 3230 | 3230 | 3250 | 3250 |
| Front Gross Axle Weight Rating ⁸ | 1450 | 1450 | 1450 | 1490 |
| Rear Gross Axle Weight Rating ⁸ | 1959 | 1959 | 1959 | 1959 |
| Kerb Weight ⁸ | 1783 | 1883 | 2115 | 2173 |
| Payload (based on Kerb Weight) ⁸ | 1447 | 1347 | 1135 | 1077 |
| Minimum Kerb Weight ⁸ | 1736 | 1837 | 2025 | 2079 |
| Payload (based on Min Kerb Weight) ⁸ | 1494 | 1393 | 1225 | 1171 |
| Tare Weight ⁸ | 1719 | 1819 | 2051 | 2109 |

4x2 | XL, XLS, XLT Ranger 2024.50MY Specifications

| | XL | XL | XL | XLT |
|---|-------------------------------------|------------------------------------|---------------------------------|---------------------------------|
| | 4x2 Hi-Rider Single Cab Cab-Chassis | 4x2 Hi-Rider Super Cab Cab-Chassis | 4x2 Hi-Rider Double Cab Pick-up | 4x2 Hi-Rider Double Cab Pick-up |
| Engine | 2.0L Single Turbo | 2.0L Single Turbo | 2.0L Single Turbo | 2.0L Bi -Turbo |
| Pick-up Box Dimensions⁹ (mm) | | | | |
| Height - at centreline of axle | – | – | 529 | 525 |
| Height - floor height to ground | – | – | 816 | 831 |
| Length - at floor | – | – | 1547 | 1464 |
| Length - top of box | – | – | 1471 | 1468 |
| Width - between wheelhouses | – | – | 1224 | 1217 |
| Width - pick-up box | – | – | 1584 | 1520 |
| Width - rear opening | – | – | 1413 | 1393 |
| Exterior Dimensions⁹ (mm) | | | | |
| Length - with rear bumper (where fitted) without tow receiver ¹⁰ | 5225 | 5225 | 5370 | 5370 |
| Length - with rear bumper (where fitted) with tow receiver ¹⁰ | 5406 | 5406 | 5406 | 5406 |
| Width - exterior mirrors extended | 2208 | 2208 | 2208 | 2208 |
| Width - exterior mirrors folded | 2015 | 2015 | 2015 | 2015 |
| Width - excluding mirrors | 1910 | 1910 | 1910 | 1918 |
| Height - to top of antenna base | 1872 | 1866 | 1875 | 1886 |
| Overhang - front | 865 | 865 | 865 | 865 |
| Overhang - rear | 1070 | 1070 | 1215 | 1215 |
| Track - front and rear | 1620 | 1620 | 1620 | 1620 |
| Wheelbase | 3270 | 3270 | 3270 | 3270 |
| Ground Clearance (unladen) | 224 | 224 | 224 | 234 |
| Wading Depth ¹¹ | 800 | 800 | 800 | 800 |
| Approach Angle (unladen, degrees) | 29 | 29 | 29 | 30 |
| Departure Angle (unladen, degrees) ¹² | 29 | 29 | 25 | 23 |
| Ramp Breakover Angle (degrees) | 21 | 20 | 20 | 21 |
| Turning Circle (meters) | 12.9 | 12.9 | 12.9 | 12.9 |

S = Standard **O** = Factory Option that can be ordered before a vehicle is manufactured at an additional cost

P = Part of a Pack that can be ordered before a vehicle is manufactured at an additional cost **A** = Accessory fitted at Ford Dealer at an additional cost

Some features may be impacted by the removal of the standard load box fitted to the vehicle.

Disclaimer:

1. Driver-assist features are supplemental and do not replace the driver's attention, judgment and need to control the vehicle. May not operate at certain speeds, or in certain driving, road or weather conditions. See Owner's Manual for details and limitations. 2. Mud/Rut Mode intended for off-road use only. 3. Sand Mode intended for off-road use only. 4. Baja Mode intended for off-road use only. 5. Rock Crawl Mode intended for off-road use only. 6. Fuel consumption and emissions as per ADR 81/02 (combined cycle) and to be used for vehicle comparison purposes only. It is unlikely that these fuel consumption and emissions figures will be achieved in real world driving conditions. Actual fuel consumption and emissions will depend on many factors including the driver's habits, prevailing conditions and the vehicle's equipment, options and accessories, condition and use. 7. With Delete Auto Stop/Start System option selected. 8. Subject to State and Territory regulations. Kerb Weight includes the vehicle with a full tank of fuel, without occupants, luggage or cargo and with the heaviest possible combination of factory fitted optional equipment included. Minimum Kerb Weight includes the vehicle with a full tank of fuel, without occupants, luggage or cargo and with the lightest possible orderable combination of factory fit equipment. Tare Weight includes the vehicle with 10L of fuel, without occupants, luggage or cargo and with the heaviest possible combination of factory fitted optional equipment included. All payloads are calculated by deducting either the vehicle's Kerb Weight, Minimum Kerb Weight or Tare Weight from its Gross Vehicle Mass (GVM). Payload (based on Kerb Weight) is the maximum combined value of occupants, cargo, added accessories, added structures and tow ball download (when towing). Ranger Raptor payload is calculated by deducting the vehicle's Tare Weight from its Gross Vehicle Mass (GVM). All Chassis Cab payloads, kerb and tare weights exclude weights of tray bodies. Vehicle weights are approximate and subject to individual variances. Vehicles should be weighed before and after adding additional load, accessories or towing a trailer to ensure the maximum Gross Vehicle Mass (GVM), Gross Combined Mass (GCM) and Gross Axle Weight Ratings are not exceeded. 9. Vehicle dimensions are approximate and subject to individual vehicle variances, and should be confirmed before fitting any accessories or otherwise relying on this value. All Pick-up box dimensions take into account the Drop-In or Spray-In Bedliner where standards. 10. Vehicle length measured from front license plate bracket. 11. 800mm Water Wading achieved when maintaining a steady speed of 7 km/h. 12. Inclusive of tow bar where standard.

4x2 | XL, XLS, XLT Ranger 2024.50MY Specifications

| | XL | XL | XL | XLT |
|--|-------------------------------------|------------------------------------|---------------------------------|---------------------------------|
| | 4x2 Hi-Rider Single Cab Cab-Chassis | 4x2 Hi-Rider Super Cab Cab-Chassis | 4x2 Hi-Rider Double Cab Pick-up | 4x2 Hi-Rider Double Cab Pick-up |
| Engine | 2.0L Single Turbo | 2.0L Single Turbo | 2.0L Single Turbo | 2.0L Bi-Turbo |
| Interior Dimensions¹³ (mm) | | | | |
| 2nd Row Headroom | – | 935 | 989 | 989 |
| 2nd Row Legroom | – | 759 | 879 | 879 |
| 2nd Row Shoulder Room | – | 1392 | 1440 | 1440 |
| Front Headroom | 1024 | 1024 | 1024 | 1024 |
| Front Legroom | 1057 | 1057 | 1057 | 1057 |
| Front Shoulder Room | 1450 | 1450 | 1450 | 1450 |
| Chassis & Suspension | | | | |
| Front Disc / Rear Drum brakes | S | S | S | – |
| Front and rear vented discs with electronic Brake Booster | – | – | – | S |
| Electrical Power Assisted Steering | S | S | S | S |
| Heavy Duty Suspension | S | S | S | – |
| Locking Rear Differential | P | P | P | S |
| Wheels | | | | |
| 16" Steel with All Season Tyres | S | S | S | – |
| 16" Alloy with All Season Tyres | – | – | – | – |
| 17" Alloy with All Season Tyres | – | – | – | S |
| 17" Alloy with All Terrain BF Goodrich KO2 Tyres | – | – | – | – |
| 18" Alloy with All Season Tyres | – | – | – | – |
| 18" Alloy with All Terrain Tyres | – | – | – | – |
| Spare Wheel - 16" Steel | S | S | S | – |
| Spare Wheel - 17" Steel | – | – | – | S |
| Spare Wheel - 17" Alloy | – | – | – | – |
| Spare Wheel - 18" Alloy | – | – | – | – |
| LT285/70R17 BF Goodrich KO2 High Performance All Terrain tyres | – | – | – | – |
| Exterior Lighting | | | | |
| Headlamps - Halogen | S | S | S | – |
| Headlamps - LED | – | – | – | S |
| Headlamps - Matrix LED with Auto Leveling & Dynamic Bending | – | – | – | – |
| Daytime Running Lamps - Halogen | S | S | S | – |
| Daytime Running Lamps - LED | – | – | – | S |
| Front Fog Lamps - Halogen | – | – | – | S |
| Front Fog Lamps - LED | – | – | – | – |
| Taillamps - Halogen | S | S | – | – |
| Taillamps - LED | – | – | S | S |
| Tailgate Mounted Stop Light | – | – | S | S |
| Zone Lighting ¹⁴ | – | – | – | – |

4x2 | XL, XLS, XLT Ranger 2024.50MY Specifications

| | XL | XL | XL | XLT |
|--|-------------------------------------|------------------------------------|---------------------------------|---------------------------------|
| | 4x2 Hi-Rider Single Cab Cab-Chassis | 4x2 Hi-Rider Super Cab Cab-Chassis | 4x2 Hi-Rider Double Cab Pick-up | 4x2 Hi-Rider Double Cab Pick-up |
| Engine | 2.0L Single Turbo | 2.0L Single Turbo | 2.0L Single Turbo | 2.0L Bi-Turbo |
| Exterior | | | | |
| Exterior Mirrors - Power Adjustable | S | S | S | S |
| Exterior Mirrors - Power Folding | – | – | S | S |
| Exterior Mirrors - Puddle Lamps | – | – | – | – |
| Steel Underbody Protection | P | P | P | P |
| Side Steps | – | – | – | S |
| Rear Box Step | – | – | S | S |
| Roof Rails | – | – | – | – |
| Sports Bar ¹⁵ | – | – | – | S |
| Sports Hoop/Sailplane ¹⁵ | – | – | – | – |
| Load Box Elements | | | | |
| Tailgate Ruler | – | – | S | – |
| Drop In Bedliner (without Tailgate Ruler) ¹⁵ | – | – | – | S |
| Tough Bed™ Spray-In Bedliner (incl. Tailgate Ruler) | – | – | – | – |
| 12V Socket in Bedliner | – | – | – | S |
| Box Top Protective Capping with Load Box Access Caps ¹⁵ | – | – | S | S |
| Aluminum Tie Down Rails ¹⁵ | – | – | – | – |
| Inner Tie Downs | – | – | S | S |
| Cargo Management System | – | – | – | – |
| Load Rest ¹⁵ | – | – | S | – |
| Load Box Illumination | – | – | S | S |
| Tailgate Cargo Clamps | – | – | S | S |
| Tailgate Cupholders | – | – | S | S |
| Power Tailgate Lock | – | – | – | S |
| Tailgate with Lift Assistance | – | – | S | S |
| Power Roller Shutter ¹⁵ | – | – | – | – |

S = Standard **O** = Factory Option that can be ordered before a vehicle is manufactured at an additional cost

P = Part of a Pack that can be ordered before a vehicle is manufactured at an additional cost **A** = Accessory fitted at Ford Dealer at an additional cost

Disclaimer:

13. Vehicle dimensions are approximate and subject to individual vehicle variances, and should be confirmed before fitting any accessories or otherwise relying on this value. All Pick-up box dimensions take into account the Drop-In or Spray-In Bedliner where standards. **14.** Zone Lighting will not operate if battery charge is insufficient. The length of time that Zone Lighting will operate depends on the battery charge, the types of lights fitted to the vehicle (LED or Bulb) and other electrical loads connected to the vehicle. The system will automatically turn off after a period of time to preserve the battery's engine starting performance.

15. Load Rest (XL/XLS), Sports Bar (XLT/Sport), Sports Hoop/Sailplane, Aluminum Tie Down Rails and Power Roller Shutter (Wildtrak) and Box Top Protective Capping with Load Box Access Caps not available when Canopy option selected. Load Rest (XL/XLS) not included when Manual Roller Shutter option selected. Drop In Bedliner may be trimmed to accommodate mounting brackets.

4x2 | XL, XLS, XLT Ranger 2024.50MY Specifications

| | XL | XL | XL | XLT |
|--|-------------------------------------|------------------------------------|---------------------------------|---------------------------------|
| | 4x2 Hi-Rider Single Cab Cab-Chassis | 4x2 Hi-Rider Super Cab Cab-Chassis | 4x2 Hi-Rider Double Cab Pick-up | 4x2 Hi-Rider Double Cab Pick-up |
| Engine | 2.0L Single Turbo | 2.0L Single Turbo | 2.0L Single Turbo | 2.0L Bi -Turbo |
| Interior, Seating and Door Trim | | | | |
| Leather Wrapped Steering Wheel & Gear Knob | – | – | – | S |
| Steering Wheel Reach & Height Adjust | S | S | S | S |
| Electric Parking Brake | – | – | – | S |
| e-Shifter | – | – | – | – |
| Seating Capacity | 2 | 4 | 5 | 5 |
| Heated Seats - Front Driver & Passenger | – | – | – | – |
| Seat Material - Cloth | S | S | S | – |
| Seat Material - Premium Cloth | – | – | – | S |
| Seat Material - Leather Accented (excluding 2nd row middle seat) ¹⁶ | – | – | – | – |
| Driver Seat - 8-Way Manual | S | S | S | S |
| Driver Seat - 8-Way Power | – | – | – | – |
| Front Passenger Seat - 4-Way Manual | S | S | S | S |
| Front Passenger Seat - 6-Way Manual | – | – | – | – |
| Front Passenger Seat - 8-Way Power | – | – | – | – |
| Driver & Front Passenger Seat 10-Way Power | – | – | – | – |
| Child Seat Upper Anchorage Points (x 2) | – | – | S | S |
| Child Seat ISOFIX Anchorage Points (x 2) | – | – | S | S |
| Floor Covering - Vinyl | S | S | S | – |
| Floor Covering - Carpet | – | – | – | S |
| Floor Mats - Driver | – | – | – | S |
| Floor Mats - Driver & Front Passenger | – | – | – | – |
| Comfort and Convenience | | | | |
| Ambient Lighting | – | – | – | – |
| Auxiliary Switch Bank | – | – | – | – |
| Centre Console with Single Lid and 2 Cup Holders | S | S | S | S |
| Instrument Panel Cup Holders | – | – | – | – |
| Charging | | | | |
| - Auxiliary 12V Power Outlet - Centre Console Bin | S | S | S | S |
| - Auxiliary 12V Power Outlet - Rear of Centre Console | – | S | S | S |
| - USB Ports | 3 | 3 | 3 | 3 |
| - Wireless Charging ¹⁷ | – | – | – | – |
| - 12V Socket in Bedliner | – | – | – | S |
| Climate Control - Single-Zone Manual | S | S | S | – |
| Climate Control - Dual-Zone | – | – | – | S |
| Rear Air Vent Registers | – | – | – | S |
| Auto Headlamp On-Off | S | S | S | S |
| Auto High Beam | – | – | – | – |
| Front Power Windows | S | S | S | S |

4x2 | XL, XLS, XLT Ranger 2024.50MY Specifications

| | XL | XL | XL | XLT |
|---|-------------------------------------|------------------------------------|---------------------------------|---------------------------------|
| | 4x2 Hi-Rider Single Cab Cab-Chassis | 4x2 Hi-Rider Super Cab Cab-Chassis | 4x2 Hi-Rider Double Cab Pick-up | 4x2 Hi-Rider Double Cab Pick-up |
| Engine | 2.0L Single Turbo | 2.0L Single Turbo | 2.0L Single Turbo | 2.0L Bi -Turbo |
| Comfort and Convenience continues | | | | |
| Rear Power Windows | – | – | S | S |
| Privacy Glass | – | – | – | S |
| Rain Sensing Windscreen Wipers | – | – | – | S |
| Rear Window Defrost | S | S | S | S |
| Electrochromatic Rear View Mirror | – | – | – | S |
| Underseat Stowage | – | S | S | S |
| Audio and Communication | | | | |
| Embedded Modem | S | S | S | S |
| FordPass Connect ¹⁸ | S | S | S | S |
| Colour Digital Instrument Cluster with Configurable Display - 8-inch | S | S | S | S |
| Colour Digital Instrument Cluster with Configurable Display - 12.4-inch | – | – | – | – |
| Colour Multi-Function Touch Screen Display - 10.1-inch | S | S | S | S |
| Colour Multi-Function Touch Screen Display - 12-inch | – | – | – | – |
| Speakers | 2 | 4 | 4 | 6 |
| B&O Premium Audio System (10 Speakers) ¹⁹ | – | – | – | – |
| Digital Audio (DAB+) | – | – | – | S |
| Bluetooth® with Phone/Audio Streaming ²⁰ | S | S | S | S |
| Built-In Satellite Navigation with one year of Connected Navigation Services included ²¹ | – | – | – | S |
| SYNC®4A ²² | S | S | S | – |
| SYNC®4A with Voice-Activated Controls ²² | – | – | – | S |
| Steering Wheel Audio/Function Control | S | S | S | S |
| Wireless Apple CarPlay™ & Android Auto™ ²³ | S | S | S | S |

S = Standard **O** = Factory Option that can be ordered before a vehicle is manufactured at an additional cost

P = Part of a Pack that can be ordered before a vehicle is manufactured at an additional cost **A** = Accessory fitted at Ford Dealer at an additional cost

Disclaimer:

16. Leather accented refers to seats with a combination of real and artificial leather. No leather in 2nd row middle seat. **17.** Wireless Charging only available with compatible phones. **18.** Use of FordPass is subject to the FordPass Terms and Privacy Policy available on ford.com.au/fordpass and requires a compatible mobile device, internet access and software (including software updates from time to time). FordPass functionality and appearance may change over time due to software updates. You are responsible for internet access, mobile network data and voice call services required for your use of the FordPass App on your mobile device, including associated fees. The FordPass App and FordPass Connect modem can only work when both are connected to the telecommunications network. The FordPass Connect modem will only function on the 3G or 4G telecommunications networks. When these networks are no longer available, the modem will stop functioning and the connected services and all data transmission via the modem will cease. Ford cannot guarantee that FordPass will be in fully operating condition at all times and the FordPass App may be unavailable or particular FordPass services interrupted. Ford is not responsible for any limitations or restrictions of the telecommunications network or of your mobile device. Warning: Local laws prohibit some phone functions while driving. Check your local road rules before using these functions. Use Remote Vehicle Start and Stop responsibly and only in well ventilated areas where you are aware of your vehicle's surroundings. **19.** BANG & OLUFSEN© 2024 and B&O© 2024. BANG & OLUFSEN™ and B&O™ are registered trademarks of Bang & Olufsen Group. Licensed by Harman Becker Automotive System Manufacturing Kft. All rights reserved. **20.** Bluetooth® is a registered trademark of Bluetooth SIG, Inc. and is under license. Some phones not compatible. **21.** Eligible vehicles receive Connected Navigation Services for 1 year from the Ford Express New Vehicle Warranty start date, after which time the Connected Navigation Services may cease to be available, or may be subject to a subscription fee. To use Connected Navigation Services, users must have created a FordPass App account (terms apply), have fully activated the vehicle's FordPass Connect modem and have SYNC Location set to 'on'. **22.** Don't drive distracted. Use voice operated systems where possible and don't use handheld devices while driving. Some features may be locked out while the vehicle is in gear. Not all SYNC features are compatible with all phones. SYNC screen appearance and functionality may change over time due to software updates. **23.** Apple CarPlay / Android Auto requires phone with compatible version of Apple iOS / Android™ (as applicable), active data service, and connection cable (sold separately). SYNC® does not control Apple CarPlay/Android Auto while in use. Apple / Google and other third parties are responsible for their respective functionality. Message and data rates may apply. Apple CarPlay, Siri Eyes Free, iPod and iPhone are trademarks of Apple Inc. registered in the US and other countries. Android Auto and Google Maps are trademarks of Google Inc. Ford Applink® is available on selected SYNC® models and is compatible with select smartphone platforms. Warning: Local laws prohibit some phone functions while driving. Check your local road rules before using these functions.

4x2 | XL, XLS, XLT Ranger 2024.50MY Specifications

| | XL | XL | XL | XLT |
|--|-------------------------------------|------------------------------------|---------------------------------|---------------------------------|
| | 4x2 Hi-Rider Single Cab Cab-Chassis | 4x2 Hi-Rider Super Cab Cab-Chassis | 4x2 Hi-Rider Double Cab Pick-up | 4x2 Hi-Rider Double Cab Pick-up |
| Engine | 2.0L Single Turbo | 2.0L Single Turbo | 2.0L Single Turbo | 2.0L Bi -Turbo |
| Safety and Security | | | | |
| Perimeter Alarm System | – | – | – | S |
| Airbags x 9 - Front, Side, Knee & Full Length Curtain (Driver & Passenger) & Far Side Driver Front Airbag | S | S | S | S |
| 3 Point Lap Sash Seat Belt - All Positions | S | S | S | S |
| Child Proof Rear Door Locks | – | – | S | S |
| Emergency Assistance ²⁴ | S | S | S | S |
| Power Door Locks | S | S | S | S |
| Smart Keyless Entry with Push Button Start | – | – | – | S |
| Driver Assistance | | | | |
| Active Park Assist 2.0 ²⁵ | – | – | – | – |
| Adaptive Cruise Control ²⁵ | S | S | S | – |
| Intelligent Adaptive Cruise Control with Stop & Go, Traffic Sign Recognition and Lane Centring ²⁵ | – | – | – | S |
| Intelligent Speed Assist ²⁷ | S | S | S | S |
| Blind Spot Monitoring with Cross Traffic Alert ²⁵ | – | – | S | – |
| Blind Spot Monitoring with Cross Traffic Alert and Trailer Coverage ²⁸ | – | – | P | S |
| Dynamic Stability Control (DSC) incorporating ABS, Electronic Brakeforce Distribution, Emergency Brake Assist, Hill Start Assist, Load Adaptive Control, Roll Over Mitigation, Traction Control and Trailer Sway Control ²⁵ | S | S | S | S |
| Evasive Steer Assist ²⁵ | S | S | S | S |
| Lane Keeping Aid with Road Edge Detection and Driver Alert System ²⁹ | S | S | S | S |
| Post Impact Braking ²⁵ | S | S | S | S |
| Pre-Collision Assist with Autonomous Emergency Braking (AEB) ³⁰ | S | S | S | S |
| Reverse Brake Assist ³¹ | – | – | S | S |
| Parking Sensors - Front ²⁵ | – | – | – | S |
| Parking Sensors - Rear ²⁵ | – | – | S | S |
| Rear View Camera - Analogue ³² | S | S | – | – |
| Rear View Camera - Integrated Digital ²⁵ | – | – | S | S |
| 360-Degree Camera ²⁵ | – | – | – | – |
| Traffic Sign Recognition ³³ | S | S | S | S |
| Tyre Pressure Monitoring System | – | – | – | S |
| Towing | | | | |
| Maximum Braked Towing Capacity (kg) ³⁴ | 3,500 | 3,500 | 3,500 | 3,500 |
| Pro Trailer Back-up Assist™ ²⁵ | – | – | – | – |
| Tow Bar with Integrated Trailer Brake Controller ³⁵ | O | O | O | S |
| Trailer Light Check ³⁶ | P | P | P | S |
| Towing Vehicle Integration with Towing Checklist | S | S | S | S |
| Tow Haul Mode (part of Selectable Drive Modes ²⁵) | – | – | – | S |

4x2 | XL, XLS, XLT Ranger 2024.50MY Specifications

| | XL | XL | XL | XLT |
|--|-------------------------------------|------------------------------------|---------------------------------|---------------------------------|
| | 4x2 Hi-Rider Single Cab Cab-Chassis | 4x2 Hi-Rider Super Cab Cab-Chassis | 4x2 Hi-Rider Double Cab Pick-up | 4x2 Hi-Rider Double Cab Pick-up |
| Engine | 2.0L Single Turbo | 2.0L Single Turbo | 2.0L Single Turbo | 2.0L Bi -Turbo |
| Off-Road | | | | |
| Off-Road Screen ²⁵ | – | – | – | – |
| Hill Descent Control ²⁵ | – | – | – | – |
| Locking Rear Differential | P | P | P | S |
| Front Recovery Hook | 1 | 1 | 1 | 1 |
| Rear Recovery Hook | – | – | – | – |
| Ford Factory Fitted Options | | | | |
| Delete Auto Stop/Start System | – | – | – | NCO |
| Stylish Canopy (Dual Lift) ³⁷ | – | – | O | O |
| Stylish Canopy (Lift and Slide) ³⁷ | – | – | O | O |
| Commercial Canopy ³⁷ | – | – | O | O |
| Manual Roller Shutter ³⁸ | – | – | O | O |
| Additional XL Wheel Centre Cap Pack to Suit Wheel Nut Indicator Fitment | O | O | O | – |
| Towing Pack - Tow Bar with Integrated Trailer Brake Controller ³⁵ and Trailer Light Check ³⁶ | O | O | O | S |
| Blind Spot Monitoring Trailer Coverage ²⁷ | – | – | O | S |
| Prestige Paint | O | O | O | O |

S = Standard **O** = Factory Option that can be ordered before a vehicle is manufactured at an additional cost

P = Part of a Pack that can be ordered before a vehicle is manufactured at an additional cost **A** = Accessory fitted at Ford Dealer at an additional cost

NCO = No Cost Option that can be ordered before a vehicle is manufactured at no additional cost

Disclaimer:

24. Emergency Assistance feature needs a paired and in range mobile phone. Can activate in the event of a crash which deploys an airbag or activates the fuel pump shut off. **25.** Driver-assist features are supplemental and do not replace the driver's attention, judgment and need to control the vehicle. May not operate at certain speeds, or in certain driving, road or weather conditions. See Owner's Manual for more information. **26.** Driver-assist features are supplemental and do not replace the driver's attention, judgment and need to control the vehicle. May not operate at certain speeds, or in certain driving, road or weather conditions. Intelligent Adaptive Cruise Control (iACC) uses various data to adjust the set speed of the vehicle to the speed limit detected by the system. The iACC system will not always detect the correct speed limit and may set a vehicle speed that is above or below the actual speed limit. If the system does this, it can be overridden by the driver applying the brake or accelerator or via steering wheel controls. In some circumstances, iACC will use map data to set the vehicle speed. Ford recommends keeping map data updated by fully activating the vehicle's FordPass Connect modem and enabling Connected Navigation Services. Connected Navigation Services are included for 1 year from the Ford Express New Vehicle Warranty start date and available ongoing subject to payment of a subscription fee. Adaptive Cruise Control and Lane Centring has a minimum operating speed of 20km/hr. Detection of lower speed limit will result in system entering standby when iACC is active. The Stop and Go functionality of this system operates as low as 0km/hr in traffic jam situations. Lane Centring feature should be disabled via the Driver Assistance menu in SYNC before towing. Customers should read the Owner's Manual for details of the limitations of the iACC system before activating. Speed Sign Recognition will not always detect the correct speed limit and may display a speed that is above or below the actual speed limit. On Ranger models with Satellite Navigation, in some circumstances, Speed Sign Recognition will use map data to display the speed limit on the digital instrument cluster. Ford recommends keeping map data updated by fully activating the vehicle's FordPass Connect modem and enabling Connected Navigation Services. Connected Navigation Services are included for 1 year from the Ford Express New Vehicle Warranty start date and available ongoing subject to payment of a subscription fee. **27.** Driver-assist features are supplemental and do not replace the driver's attention, judgment and need to control the vehicle. May not operate at certain speeds, or in certain driving, road or weather conditions. Intelligent Speed Assist (ISA) uses various data to limit the set speed of the vehicle to the speed limit detected by the system. The ISA system will not always detect the correct speed limit and may limit a vehicle speed above or below the actual speed limit. ISA can be temporarily overridden by the driver firmly pressing the accelerator. Customers should read the Owner's Manual for details of the limitations of the ISA system before activating. On Ranger models with Satellite Navigation, in some circumstances, ISA will use map data to limit the vehicle speed. Ford recommends keeping map data updated by fully activating the vehicle's FordPass Connect modem and enabling Connected Navigation Services. Connected Navigation Services are included for 1 year from the Ford Express New Vehicle Warranty start date and available ongoing subject to payment of a subscription fee. **28.** Driver-assist features are supplemental and do not replace the driver's attention, judgment and need to control the vehicle. May not operate at certain speeds, or in certain driving, road or weather conditions. See Owner's Manual for more information. Trailer Coverage system (requires a genuine factory fit tow bar) supports conventional trailer dimensions: up to 2.4m wide (measured at trailer front) and up to 10m long from the rear of your vehicle. Drivers will need to create a profile of their trailers in SYNC to support this system. **29.** Driver-assist features are supplemental and do not replace the driver's attention, judgment and need to control the vehicle. May not operate at certain speeds, or in certain driving, road or weather conditions. See Owner's Manual for more information. Road Edge Detection designed for use on rural roads at speeds of 65 – 110km/h. The feature does not detect every edge and does require a level of contrast between the road surface and the edge. **30.** Driver-assist features are supplemental and do not replace the driver's attention, judgment and need to control the vehicle. May not operate at certain speeds, or in certain driving, road or weather conditions. See Owner's Manual for more information. Pre-collision Assist with Automatic Emergency Braking detects pedestrians, but not in all conditions, and can help avoid or reduce a collision. It does not replace safe driving. See Owner's Manual for Limitations. **31.** Driver-assist features are supplemental and do not replace the driver's attention, judgment and need to control the vehicle. May not operate at certain speeds, or in certain driving, road or weather conditions. Please see Owner's Manual for more information. Reverse Brake Assist functions when in reverse and travelling at a speed of 2-12 km/h. **32.** Analogue Rear View Camera is provided and will need to be fitted to the vehicle by a body builder. Driver-assist features are supplemental and do not replace the driver's attention, judgment and need to control the vehicle. May not operate at certain speeds, or in certain driving, road or weather conditions. See Owner's Manual for more information. **33.** Driver-assist features are supplemental and do not replace the driver's attention, judgment and need to control the vehicle. May not operate at certain speeds, or in certain driving, road or weather conditions. See Owner's Manual for more information. Speed Sign Recognition will not always detect the correct speed limit and may display a speed that is above or below the actual speed limit. On Ranger models with Satellite Navigation, in some circumstances Speed Sign Recognition will use map data to display the speed limit on the digital instrument cluster. Ford recommends keeping map data updated by fully activating the vehicle's FordPass Connect modem and enabling Connected Navigation Services. Connected Navigation Services are included for 1 year from the Ford Express New Vehicle Warranty start date and available ongoing subject to payment of a subscription fee. **34.** Maximum towing capacity-braked using a Genuine Ford tow pack. Subject to State and Territory regulations. To comply with these limits, occupants and / or luggage may need to be restricted to not exceed the GCM and GVM limits. For further details regarding passenger and luggage restrictions, please consult your authorised Ford Dealer and / or refer to the Owner's Manual. **35.** Drivers will need to create a profile of their trailers in SYNC to support the Trailer Brake Controller and must set the gain on the Brake Controller unit. **36.** Trailer Light Check requires a Genuine Ford Tow Bar to be fitted and can be used via SYNC, or via FordPass app as a Connected Service. Where used via the app as a Connected Service, eligible vehicles receive 1 year of service from the Ford Express New Vehicle Warranty start date after which time, the Connected Service may cease to be available, or may be subject to a subscription fee. Users must have created a FordPass App account (terms apply) and have fully activated the vehicle's FordPass Connect modem to use this feature via the app. **37.** Load Rest (XL/XLS), Sports Bar (XLT/Sport), Sports Hoop/Sailplane, Aluminium Tie Down Rails and Power Roller Shutter (Wildtrak) and Box Top Protective Capping with Load Box Access Caps not available when Canopy option selected. Drop In Bedliner may be trimmed to accommodate mounting brackets. **38.** Load Rest (XL/XLS) not included when Manual Roller Shutter option selected. Drop In Bedliner may be trimmed to accommodate mounting brackets.

4x4 | XL, XLT Ranger 2024.50MY Specifications

| | XL | XL | XLT |
|---|----------------------------|---------------------------|------------------------|
| | 4x4 Single Cab Cab-Chassis | 4x4 Super Cab Cab-Chassis | 4x4 Super Cab Pick-up |
| Engine | 2.0L Bi-Turbo | 2.0L Bi -Turbo | 2.0L Bi -Turbo |
| Maximum Power | 154kW @ 3,750rpm | 154kW @ 3,750rpm | 154kW @ 3,750rpm |
| Maximum Torque | 500Nm @ 1,750-2,500rpm | 500Nm @ 1,750-2,000rpm | 500Nm @ 1,750-2,000rpm |
| Transmissions | | | |
| 6-speed automatic transmission | – | – | – |
| 10-speed automatic transmission | S | S | S |
| Driveline | | | |
| RWD | – | – | – |
| Part-time 4x4 | S | S | S |
| Full-time 4WD | – | – | – |
| Selectable Drive Modes ¹ | | | |
| - Normal | – | – | S |
| - Eco | – | – | S |
| - Tow / Haul | – | – | S |
| - Slippery | – | – | S |
| - Mud / Ruts ² | – | – | – |
| - Sand ³ | – | – | – |
| - Sport | – | – | – |
| - Baja ⁴ | – | – | – |
| - Rock Crawl ⁵ | – | – | – |
| Fuel | | | |
| Combined Fuel Economy (L/100km)(Auto) ⁶ | 7.2/7.6 ⁷ | 7.2/7.6 ⁷ | 7.2/7.6 ⁷ |
| CO ₂ Emissions (g/km)(Auto) ⁶ | 189/201 ⁷ | 189/201 ⁷ | 189/201 ⁷ |
| Fuel Tank Capacity (L) | 80 | 80 | 80 |
| Fuel Type | Diesel | Diesel | Diesel |
| Vehicle Masses (kg) | | | |
| Gross Combined Mass ⁸ | 6350 | 6350 | 6350 |
| Gross Vehicle Mass ⁸ | 3230 | 3230 | 3230 |
| Front Gross Axle Weight Rating ⁸ | 1490 | 1490 | 1450 |
| Rear Gross Axle Weight Rating ⁸ | 1959 | 1959 | 1959 |
| Kerb Weight ⁸ | 1893 | 1994 | 2171 |
| Payload (based on Kerb Weight) ⁸ | 1337 | 1236 | 1059 |
| Minimum Kerb Weight ⁸ | 1856 | 1957 | 2110 |
| Payload (based on Min Kerb Weight) ⁸ | 1374 | 1273 | 1120 |
| Tare Weight ⁸ | 1829 | 1930 | 2107 |

4x4 | XL, XLT Ranger 2024.50MY Specifications

| | XL | XL | XLT |
|---|----------------------------|---------------------------|-----------------------|
| | 4x4 Single Cab Cab-Chassis | 4x4 Super Cab Cab-Chassis | 4x4 Super Cab Pick-up |
| Engine | 2.0L Bi-Turbo | 2.0L Bi -Turbo | 2.0L Bi -Turbo |
| Pick-up Box Dimensions⁹ (mm) | | | |
| Height - at centreline of axle | – | – | 526 |
| Height - floor height to ground | – | – | 830 |
| Length - at floor | – | – | 1839 |
| Length - top of box | – | – | 1766 |
| Width - between wheelhouses | – | – | 1218 |
| Width - pick-up box | – | – | 1578 |
| Width - rear opening | – | – | 1407 |
| Exterior Dimensions⁹ (mm) | | | |
| Length - with rear bumper (where fitted) without tow receiver ¹⁰ | 5225 | 5225 | 5370 |
| Length - with rear bumper (where fitted) with tow receiver ¹⁰ | 5406 | 5406 | 5406 |
| Width - exterior mirrors extended | 2208 | 2208 | 2208 |
| Width - exterior mirrors folded | 2015 | 2015 | 2015 |
| Width - excluding mirrors | 1910 | 1910 | 1918 |
| Height - to top of antenna base | 1872 | 1866 | 1877 |
| Overhang - front | 865 | 865 | 865 |
| Overhang - rear | 1070 | 1070 | 1215 |
| Track - front and rear | 1620 | 1620 | 1620 |
| Wheelbase | 3270 | 3270 | 3270 |
| Ground Clearance (unladen) | 224 | 224 | 234 |
| Wading Depth ¹¹ | 800 | 800 | 800 |
| Approach Angle (unladen, degrees) | 29 | 29 | 30 |
| Departure Angle (unladen, degrees) ¹² | 29 | 29 | 23 |
| Ramp Breakover Angle (degrees) | 21 | 20 | 21 |
| Turning Circle (meters) | 12.9 | 12.9 | 12.9 |

S = Standard **O** = Factory Option that can be ordered before a vehicle is manufactured at an additional cost

P = Part of a Pack that can be ordered before a vehicle is manufactured at an additional cost **A** = Accessory fitted at Ford Dealer at an additional cost

Some features may be impacted by the removal of the standard load box fitted to the vehicle.

Disclaimer:

1. Driver-assist features are supplemental and do not replace the driver's attention, judgment and need to control the vehicle. May not operate at certain speeds, or in certain driving, road or weather conditions. See Owner's Manual for details and limitations. 2. Mud/Rut Mode intended for off-road use only. 3. Sand Mode intended for off-road use only. 4. Baja Mode intended for off-road use only. 5. Rock Crawl Mode intended for off-road use only. 6. Fuel consumption and emissions as per ADR 81/02 (combined cycle) and to be used for vehicle comparison purposes only. It is unlikely that these fuel consumption and emissions figures will be achieved in real world driving conditions. Actual fuel consumption and emissions will depend on many factors including the driver's habits, prevailing conditions and the vehicle's equipment, options and accessories, condition and use. 7. With Delete Auto Stop/Start System option selected. 8. Subject to State and Territory regulations. Kerb Weight includes the vehicle with a full tank of fuel, without occupants, luggage or cargo and with the heaviest possible combination of factory fitted optional equipment included. Minimum Kerb Weight includes the vehicle with a full tank of fuel, without occupants, luggage or cargo and with the lightest possible orderable combination of factory fit equipment. Tare Weight includes the vehicle with 10L of fuel, without occupants, luggage or cargo and with the heaviest possible combination of factory fitted optional equipment included. All payloads are calculated by deducting either the vehicle's Kerb Weight, Minimum Kerb Weight or Tare Weight from its Gross Vehicle Mass (GVM). Payload (based on Kerb Weight) is the maximum combined value of occupants, cargo, added accessories, added structures and tow ball download (when towing). Ranger Raptor payload is calculated by deducting the vehicle's Tare Weight from its Gross Vehicle Mass (GVM). All Chassis Cab payloads, kerb and tare weights exclude weights of tray bodies. Vehicle weights are approximate and subject to individual variances. Vehicles should be weighed before and after adding additional load, accessories or towing a trailer to ensure the maximum Gross Vehicle Mass (GVM), Gross Combined Mass (GCM) and Gross Axle Weight Ratings are not exceeded. 9. Vehicle dimensions are approximate and subject to individual vehicle variances, and should be confirmed before fitting any accessories or otherwise relying on this value. All Pick-up box dimensions take into account the Drop-In or Spray-In Bedliner where standard. 10. Vehicle length measured from front license plate bracket. 11. 800mm Water Wading achieved when maintaining a steady speed of 7 km/h. 12. Inclusive of tow bar where standard.

4x4 | XL, XLT Ranger 2024.50MY Specifications

| | XL | XL | XLT |
|--|----------------------------|---------------------------|-----------------------|
| | 4x4 Single Cab Cab-Chassis | 4x4 Super Cab Cab-Chassis | 4x4 Super Cab Pick-up |
| Engine | 2.0L Bi-Turbo | 2.0L Bi -Turbo | 2.0L Bi -Turbo |
| Interior Dimensions¹³ (mm) | | | |
| 2nd Row Headroom | – | 935 | 935 |
| 2nd Row Legroom | – | 759 | 759 |
| 2nd Row Shoulder Room | – | 1392 | 1392 |
| Front Headroom | 1024 | 1024 | 1024 |
| Front Legroom | 1057 | 1057 | 1057 |
| Front Shoulder Room | 1450 | 1450 | 1450 |
| Chassis & Suspension | | | |
| Heavy Duty Suspension | S | S | – |
| Front Disc / Rear Drum brakes | S | S | – |
| Front and rear vented discs with electronic Brake Booster | – | – | S |
| Electrical Power Assisted Steering | S | S | S |
| Locking Rear Differential | S | S | S |
| Wheels | | | |
| 16" Steel with All Season Tyres | S | S | – |
| 16" Alloy with All Season Tyres | – | – | – |
| 17" Alloy with All Season Tyres | – | – | S |
| 17" Alloy with All Terrain BF Goodrich KO2 Tyres | – | – | – |
| 18" Alloy with All Season Tyres | – | – | – |
| 18" Alloy with All Terrain Tyres | – | – | – |
| Spare Wheel - 16" Steel | S | S | – |
| Spare Wheel - 17" Steel | – | – | S |
| Spare Wheel - 17" Alloy | – | – | – |
| Spare Wheel - 18" Alloy | – | – | – |
| LT285/70R17 BF Goodrich KO2 High Performance All Terrain tyres | – | – | – |
| Exterior Lighting | | | |
| Headlamps - Halogen | S | S | – |
| Headlamps - LED | – | – | S |
| Headlamps - Matrix LED with Auto Leveling & Dynamic Bending | – | – | – |
| Daytime Running Lamps - Halogen | S | S | – |
| Daytime Running Lamps - LED | – | – | S |
| Front Fog Lamps - Halogen | – | – | S |
| Front Fog Lamps - LED | – | – | – |
| Taillamps - Halogen | S | S | – |
| Taillamps - LED | – | – | S |
| Tailgate Mounted Stop Light | – | – | S |
| Zone Lighting ¹⁴ | – | – | P |

4x4 | XL, XLT Ranger 2024.50MY Specifications

| | XL | XL | XLT |
|--|----------------------------|---------------------------|-----------------------|
| | 4x4 Single Cab Cab-Chassis | 4x4 Super Cab Cab-Chassis | 4x4 Super Cab Pick-up |
| Engine | 2.0L Bi-Turbo | 2.0L Bi -Turbo | 2.0L Bi -Turbo |
| Exterior | | | |
| Exterior Mirrors - Power Adjustable | S | S | S |
| Exterior Mirrors - Power Folding | – | – | S |
| Exterior Mirrors - Puddle Lamps | – | – | P |
| Steel Underbody Protection | S | S | S |
| Side Steps | – | – | S |
| Rear Box Step | – | – | S |
| Roof Rails | – | – | – |
| Sports Bar ¹⁵ | – | – | S |
| Sports Hoop/Sailplane ¹⁵ | – | – | – |
| Load Box Elements | | | |
| Tailgate Ruler | – | – | S |
| Drop In Bedliner (without Tailgate Ruler) ¹⁵ | – | – | – |
| Tough Bed™ Spray-In Bedliner (incl. Tailgate Ruler) | – | – | S |
| 12V Socket in Bedliner | – | – | S |
| Box Top Protective Capping with Load Box Access Caps ¹⁵ | – | – | S |
| Aluminum Tie Down Rails ¹⁵ | – | – | – |
| Inner Tie Downs | – | – | S |
| Cargo Management System | – | – | P |
| Load Rest ¹⁵ | – | – | – |
| Load Box Illumination | – | – | S |
| Tailgate Cargo Clamps | – | – | S |
| Tailgate Cupholders | – | – | S |
| Power Tailgate Lock | – | – | S |
| Tailgate with Lift Assistance | – | – | S |
| Power Roller Shutter ¹⁵ | – | – | – |

Disclaimer:

13. Vehicle dimensions are approximate and subject to individual vehicle variances, and should be confirmed before fitting any accessories or otherwise relying on this value. All Pick-up box dimensions take into account the Drop-In or Spray-In Bedliner where standard. **14.** Zone Lighting will not operate if battery charge is insufficient. The length of time that Zone Lighting will operate depends on the battery charge, the types of lights fitted to the vehicle (LED or Bulb) and other electrical loads connected to the vehicle. The system will automatically turn off after a period of time to preserve the battery's engine starting performance. **15.** Load Rest (XL/XLS), Sports Bar (XLT/Sport), Sports Hoop/Sailplane, Aluminum Tie Down Rails and Power Roller Shutter (Wildtrak) and Box Top Protective Capping with Load Box Access Caps not available when Canopy option selected. Load Rest (XL/XLS) not included when Manual Roller Shutter option selected. Drop In Bedliner may be trimmed to accommodate mounting brackets.

4x4 | XL, XLT Ranger 2024.50MY Specifications

| | XL | XL | XLT |
|--|----------------------------|---------------------------|-----------------------|
| | 4x4 Single Cab Cab-Chassis | 4x4 Super Cab Cab-Chassis | 4x4 Super Cab Pick-up |
| Engine | 2.0L Bi-Turbo | 2.0L Bi -Turbo | 2.0L Bi -Turbo |
| Interior, Seating and Door Trim | | | |
| Leather Wrapped Steering Wheel & Gear Knob | – | – | S |
| Steering Wheel Reach & Height Adjust | S | S | S |
| Electric Parking Brake | – | – | S |
| e-Shifter | – | – | – |
| Seating Capacity | 2 | 4 | 4 |
| Heated Seats - Front Driver & Passenger | – | – | – |
| Seat Material - Cloth | S | S | – |
| Seat Material - Premium Cloth | – | – | S |
| Seat Material - Leather Accented (excluding 2nd row middle seat) ¹⁶ | – | – | – |
| Driver Seat - 8-Way Manual | S | S | S |
| Driver Seat - 8-Way Power | – | – | – |
| Front Passenger Seat - 4-Way Manual | S | S | S |
| Front Passenger Seat - 6-Way Manual | – | – | – |
| Front Passenger Seat - 8-Way Power | – | – | – |
| Driver & Front Passenger Seat 10-Way Power | – | – | – |
| Child Seat Upper Anchorage Points (x 2) | – | – | – |
| Child Seat ISOFIX Anchorage Points (x 2) | – | – | – |
| Floor Covering - Vinyl | S | S | – |
| Floor Covering - Carpet | – | – | S |
| Floor Mats - Driver | – | – | S |
| Floor Mats - Driver & Front Passenger | – | – | – |
| Comfort and Convenience | | | |
| Ambient Lighting | – | – | – |
| Auxiliary Switch Bank | – | – | P |
| Centre Console with Single Lid and 2 Cup Holders | S | S | S |
| Instrument Panel Cup Holders | – | – | – |
| Charging | | | |
| - Auxiliary 12V Power Outlet - Centre Console Bin | S | S | S |
| - Auxiliary 12V Power Outlet - Rear of Centre Console | – | S | S |
| - USB Ports | 3 | 3 | 3 |
| - Wireless Charging ¹⁷ | – | – | – |
| - 12V Socket in Bedliner | – | – | S |
| Climate Control - Single-Zone Manual | S | S | – |
| Climate Control - Dual-Zone | – | – | S |
| Rear Air Vent Registers | – | – | – |
| Auto Headlamp On-Off | S | S | S |
| Auto High Beam | – | – | – |
| Front Power Windows | S | S | S |
| Rear Power Windows | – | – | – |

4x4 | XL, XLT Ranger 2024.50MY Specifications

| | XL | XL | XLT |
|---|----------------------------|---------------------------|-----------------------|
| | 4x4 Single Cab Cab-Chassis | 4x4 Super Cab Cab-Chassis | 4x4 Super Cab Pick-up |
| Engine | 2.0L Bi-Turbo | 2.0L Bi -Turbo | 2.0L Bi -Turbo |
| Comfort and Convenience continues | | | |
| Privacy Glass | – | – | S |
| Rain Sensing Windscreen Wipers | – | – | S |
| Rear Window Defrost | S | S | S |
| Electrochromatic Rear View Mirror | – | – | S |
| Underseat Stowage | – | S | S |
| Audio and Communication | | | |
| Embedded Modem | S | S | S |
| FordPass Connect ¹⁸ | S | S | S |
| Colour Digital Instrument Cluster with Configurable Display - 8-inch | S | S | S |
| Colour Digital Instrument Cluster with Configurable Display - 12.4-inch | – | – | – |
| Colour Multi-Function Touch Screen Display - 10.1-inch | S | S | S |
| Colour Multi-Function Touch Screen Display - 12-inch | – | – | – |
| Speakers | 2 | 4 | 6 |
| B&O Premium Audio System (10 Speakers) ¹⁹ | – | – | – |
| Digital Audio (DAB+) | – | – | S |
| Bluetooth® with Phone / Audio Streaming ²⁰ | S | S | S |
| Built-In Satellite Navigation with one year of Connected Navigation Services included ²¹ | – | – | S |
| SYNC®4A ²² | S | S | – |
| SYNC®4A with Voice-Activated Controls ²² | – | – | S |
| Steering Wheel Audio/Function Control | S | S | S |
| Wireless Apple CarPlay™ & Android Auto™ ²³ | S | S | S |

S = Standard **O** = Factory Option that can be ordered before a vehicle is manufactured at an additional cost

P = Part of a Pack that can be ordered before a vehicle is manufactured at an additional cost **A** = Accessory fitted at Ford Dealer at an additional cost

Disclaimer:

16. Leather accented refers to seats with a combination of real and artificial leather. No leather in 2nd row middle seat. **17.** Wireless Charging only available with compatible phones. **18.** Use of FordPass is subject to the FordPass Terms and Privacy Policy available on ford.com.au/fordpass and requires a compatible mobile device, internet access and software (including software updates from time to time). FordPass functionality and appearance may change over time due to software updates. You are responsible for internet access, mobile network data and voice call services required for your use of the FordPass App on your mobile device, including associated fees. The FordPass App and FordPass Connect modem can only work when both are connected to the telecommunications network. The FordPass Connect modem will only function on the 3G or 4G telecommunications networks. When these networks are no longer available, the modem will stop functioning and the connected services and all data transmission via the modem will cease. Ford cannot guarantee that FordPass will be in fully operating condition at all times and the FordPass App may be unavailable or particular FordPass services interrupted. Ford is not responsible for any limitations or restrictions of the telecommunications network or of your mobile device. Warning: Local laws prohibit some phone functions while driving. Check your local road rules before using these functions. Use Remote Vehicle Start and Stop responsibly and only in well ventilated areas where you are aware of your vehicle's surroundings. **19.** BANG & OLUFSEN© 2024 and B&O© 2024. BANG & OLUFSEN™ and B&O™ are registered trademarks of Bang & Olufsen Group. Licensed by Harman Becker Automotive System Manufacturing Kft. All rights reserved. **20.** Bluetooth® is a registered trademark of Bluetooth SIG, Inc. and is under license. Some phones not compatible. **21.** Eligible vehicles receive Connected Navigation Services for 1 year from the Ford Express New Vehicle Warranty start date, after which time the Connected Navigation Services may cease to be available, or may be subject to a subscription fee. To use Connected Navigation Services, users must have created a FordPass App account (terms apply), have fully activated the vehicle's FordPass Connect modem and have SYNC Location set to 'on'. **22.** Don't drive distracted. Use voice operated systems where possible and don't use handheld devices while driving. Some features may be locked out while the vehicle is in gear. Not all SYNC features are compatible with all phones. SYNC screen appearance and functionality may change over time due to software updates. **23.** Apple CarPlay / Android Auto requires phone with compatible version of Apple iOS / Android™ (as applicable), active data service, and connection cable (sold separately). SYNC® does not control Apple CarPlay / Android Auto while in use. Apple / Google and other third parties are responsible for their respective functionality. Message and data rates may apply. Apple CarPlay, Siri Eyes Free, iPod and iPhone are trademarks of Apple Inc. registered in the US and other countries. Android Auto and Google Maps are trademarks of Google Inc. Ford Applink® is available on selected SYNC® models and is compatible with select smartphone platforms. Warning: Local laws prohibit some phone functions while driving. Check your local road rules before using these functions.

4x4 | XL, XLT Ranger 2024.50MY Specifications

| | XL | XL | XLT |
|--|----------------------------|---------------------------|-----------------------|
| | 4x4 Single Cab Cab-Chassis | 4x4 Super Cab Cab-Chassis | 4x4 Super Cab Pick-up |
| Engine | 2.0L Bi-Turbo | 2.0L Bi -Turbo | 2.0L Bi -Turbo |
| Safety and Security | | | |
| Perimeter Alarm System | – | – | S |
| Airbags x 9 - Front, Side, Knee & Full Length Curtain (Driver & Passenger) & Far Side Driver Front Airbag | S | S | S |
| 3 Point Lap Sash Seat Belt - All Positions | S | S | S |
| Child Proof Rear Door Locks | – | – | – |
| Emergency Assistance ²⁴ | S | S | S |
| Power Door Locks | S | S | S |
| Smart Keyless Entry with Push Button Start | – | – | S |
| Driver Assistance | | | |
| Active Park Assist 2.0 ²⁵ | – | – | – |
| Adaptive Cruise Control ²⁵ | S | S | – |
| Intelligent Adaptive Cruise Control with Stop & Go, Traffic Sign Recognition and Lane Centring ²⁶ | – | – | S |
| Intelligent Speed Assist ²⁷ | S | S | S |
| Blind Spot Monitoring with Cross Traffic Alert ²⁵ | – | – | – |
| Blind Spot Monitoring with Cross Traffic Alert and Trailer Coverage ²⁸ | – | – | S |
| Dynamic Stability Control (DSC) incorporating ABS, Electronic Brakeforce Distribution, Emergency Brake Assist, Hill Start Assist, Load Adaptive Control, Roll Over Mitigation, Traction Control & Trailer Sway Control ²⁵ | S | S | S |
| Evasive Steer Assist ²⁵ | S | S | S |
| Lane Keeping Aid with Road Edge Detection and Driver Alert System ²⁹ | S | S | S |
| Post Impact Braking ²⁵ | S | S | S |
| Pre-Collision Assist with Autonomous Emergency Braking (AEB) ³⁰ | S | S | S |
| Reverse Brake Assist ³¹ | – | – | S |
| Parking Sensors - Front ²⁵ | – | – | S |
| Parking Sensors - Rear ²⁵ | – | – | S |
| Rear View Camera - Analogue ³² | S | S | – |
| Rear View Camera - Integrated Digital ²⁵ | – | – | S |
| 360-Degree Camera ²⁵ | – | – | P |
| Traffic Sign Recognition ³³ | S | S | S |
| Tyre Pressure Monitoring System | – | – | S |
| Towing | | | |
| Maximum Braked Towing Capacity (kg) ³⁴ | 3,500 | 3,500 | 3,500 |
| Pro Trailer Back-up Assist™ ²⁵ | – | – | P |
| Tow Bar with Integrated Trailer Brake Controller ³⁵ | O | O | S |
| Trailer Light Check ³⁶ | P | P | S |
| Towing Vehicle Integration with Towing Checklist | S | S | S |
| Tow Haul Mode (part of Selectable Drive Modes ²⁵) | – | – | S |

4x4 | XL, XLT Ranger 2024.50MY Specifications

| | XL | XL | XLT |
|---|----------------------------|---------------------------|-----------------------|
| | 4x4 Single Cab Cab-Chassis | 4x4 Super Cab Cab-Chassis | 4x4 Super Cab Pick-up |
| Engine | 2.0L Bi-Turbo | 2.0L Bi -Turbo | 2.0L Bi -Turbo |
| Off-Road | | | |
| Off-Road Screen ²⁵ | – | – | – |
| Hill Descent Control ²⁵ | S | S | S |
| Locking Rear Differential | S | S | S |
| Front Recovery Hook | 1 | 1 | 1 |
| Rear Recovery Hook | – | – | – |
| Ford Factory Fitted Options | | | |
| Delete Auto Stop/Start System | NCO | NCO | NCO |
| 17" Steel Wheels with All Terrain Tyres with 17" Steel Spare Wheel | O | O | – |
| 17" All Terrain Tyres | – | – | O |
| Additional XL Wheel Centre Cap Pack to Suit Wheel Nut Indicator Fitment | O | O | – |
| Towing Pack - Tow Bar with Integrated Trailer Brake Controller ³⁵ and Trailer Light Check ³⁶ | O | O | S |
| Blind Spot Monitoring Trailer Coverage ²⁷ | – | – | S |
| Touring Pack - Cargo Management System, Auxiliary Switch Bank, 360 Camera, ²³ Puddle Lamps & Zone Lighting ³⁷ Pro Trailer Back-up Assist™ ²⁵ | – | – | O |
| Prestige Paint | O | O | O |

S = Standard **O** = Factory Option that can be ordered before a vehicle is manufactured at an additional cost

P = Part of a Pack that can be ordered before a vehicle is manufactured at an additional cost **A** = Accessory fitted at Ford Dealer at an additional cost

NCO = No Cost Option that can be ordered before a vehicle is manufactured at no additional cost

Disclaimer:

24. Emergency Assistance feature needs a paired and in range mobile phone. Can activate in the event of a crash which deploys an airbag or activates the fuel pump shut off. **25.** Driver-assist features are supplemental and do not replace the driver's attention, judgment and need to control the vehicle. May not operate at certain speeds, or in certain driving, road or weather conditions. See Owner's Manual for more information. **26.** Driver-assist features are supplemental and do not replace the driver's attention, judgment and need to control the vehicle. May not operate at certain speeds, or in certain driving, road or weather conditions. Intelligent Adaptive Cruise Control (iACC) uses various data to adjust the set speed of the vehicle to the speed limit detected by the system. The iACC system will not always detect the correct speed limit and may set a vehicle speed that is above or below the actual speed limit. If the system does this, it can be overridden by the driver applying the brake or accelerator or via steering wheel controls. In some circumstances, iACC will use map data to set the vehicle speed. Ford recommends keeping map data updated by fully activating the vehicle's FordPass Connect modem and enabling Connected Navigation Services. Connected Navigation Services are included for 1 year from the Ford Express New Vehicle Warranty start date and available ongoing subject to payment of a subscription fee. Adaptive Cruise Control and Lane Centring has a minimum operating speed of 20km/hr. Detection of lower speed limit will result in system entering standby when iACC is active. The Stop and Go functionality of this system operates as low as 0km/hr in traffic jam situations. Lane Centring feature should be disabled via the Driver Assistance menu in SYNC before towing. Customers should read the Owner's Manual for details of the limitations of the iACC system before activating. Speed Sign Recognition will not always detect the correct speed limit and may display a speed that is above or below the actual speed limit. On Ranger models with Satellite Navigation, in some circumstances, Speed Sign Recognition will use map data to display the speed limit on the digital instrument cluster. Ford recommends keeping map data updated by fully activating the vehicle's FordPass Connect modem and enabling Connected Navigation Services. Connected Navigation Services are included for 1 year from the Ford Express New Vehicle Warranty start date and available ongoing subject to payment of a subscription fee. **27.** Driver-assist features are supplemental and do not replace the driver's attention, judgment and need to control the vehicle. May not operate at certain speeds, or in certain driving, road or weather conditions. Intelligent Speed Assist (ISA) uses various data to limit the set speed of the vehicle to the speed limit detected by the system. The ISA system will not always detect the correct speed limit and may limit a vehicle speed above or below the actual speed limit. ISA can be temporarily overridden by the driver firmly pressing the accelerator. Customers should read the Owner's Manual for details of the limitations of the ISA system before activating. On Ranger models with Satellite Navigation, in some circumstances, ISA will use map data to limit the vehicle speed. Ford recommends keeping map data updated by fully activating the vehicle's FordPass Connect modem and enabling Connected Navigation Services. Connected Navigation Services are included for 1 year from the Ford Express New Vehicle Warranty start date and available ongoing subject to payment of a subscription fee. **28.** Driver-assist features are supplemental and do not replace the driver's attention, judgment and need to control the vehicle. May not operate at certain speeds, or in certain driving, road or weather conditions. See Owner's Manual for more information. Trailer Coverage system (requires a genuine factory fit tow bar) supports conventional trailer dimensions: up to 2.4m wide (measured at trailer front) and up to 10m long from the rear of your vehicle. Drivers will need to create a profile of their trailers in SYNC to support this system. **29.** Driver-assist features are supplemental and do not replace the driver's attention, judgment and need to control the vehicle. May not operate at certain speeds, or in certain driving, road or weather conditions. See Owner's Manual for more information. Road Edge Detection designed for use on rural roads at speeds of 65 – 110km/h. The feature does not detect every edge and does require a level of contrast between the road surface and the edge. **30.** Driver-assist features are supplemental and do not replace the driver's attention, judgment and need to control the vehicle. May not operate at certain speeds, or in certain driving, road or weather conditions. See Owner's Manual for more information. Pre-collision Assist with Automatic Emergency Braking detects pedestrians, but not in all conditions, and can help avoid or reduce a collision. It does not replace safe driving. See Owner's Manual for Limitations. **31.** Driver-assist features are supplemental and do not replace the driver's attention, judgement and need to control the vehicle. May not operate at certain speeds, or in certain driving, road or weather conditions. Please see Owner's Manual for more information. Reverse Brake Assist functions when in reverse and travelling at a speed of 2-12 km/h. **32.** Analogue Rear View Camera is provided and will need to be fitted to the vehicle by a body builder. Driver-assist features are supplemental and do not replace the driver's attention, judgment and need to control the vehicle. May not operate at certain speeds, or in certain driving, road or weather conditions. See Owner's Manual for more information. **33.** Driver-assist features are supplemental and do not replace the driver's attention, judgment and need to control the vehicle. May not operate at certain speeds, or in certain driving, road or weather conditions. See Owner's Manual for more information. Speed Sign Recognition will not always detect the correct speed limit and may display a speed that is above or below the actual speed limit. On Ranger models with Satellite Navigation, in some circumstances Speed Sign Recognition will use map data to display the speed limit on the digital instrument cluster. Ford recommends keeping map data updated by fully activating the vehicle's FordPass Connect modem and enabling Connected Navigation Services. Connected Navigation Services are included for 1 year from the Ford Express New Vehicle Warranty start date and available ongoing subject to payment of a subscription fee. **34.** Maximum towing capacity-braked using a Genuine Ford tow pack. Subject to State and Territory regulations. To comply with these limits, occupants and / or luggage may need to be restricted to not exceed the GCM and GVM limits. For further details regarding passenger and luggage restrictions, please consult your authorised Ford Dealer and / or refer to the Owner's Manual. **35.** Drivers will need to create a profile of their trailers in SYNC to support the Trailer Brake Controller and must set the gain on the Brake Controller unit. **36.** Trailer Light Check requires a Genuine Ford Tow Bar to be fitted and can be used via SYNC, or via FordPass app as a Connected Service. Where used via the app as a Connected Service, eligible vehicles receive 1 year of service from the Ford Express New Vehicle Warranty start date after which time, the Connected Service may cease to be available, or may be subject to a subscription fee. Users must have created a FordPass App account (terms apply) and have fully activated the vehicle's FordPass Connect modem to use this feature via the app. **37.** Zone Lighting will not operate if battery charge is insufficient. The length of time that Zone Lighting will operate depends on the battery charge, the types of lights fitted to the vehicle (LED or Bulb) and other electrical loads connected to the vehicle. The system will automatically turn off after a period of time to preserve the battery's engine starting performance.

4x4 | XL Ranger 2024.50MY Specifications

| | XL | XL | XL | XL |
|---|----------------------------|----------------------------|--------------------------|------------------------|
| | 4x4 Double Cab Cab-Chassis | 4x4 Double Cab Cab-Chassis | 4x4 Double Cab Pick-up | 4x4 Double Cab Pick-up |
| Engine | 2.0L Single Turbo | 2.0L Bi-Turbo | 2.0L Single Turbo | 2.0L Bi-Turbo |
| Maximum Power | 125kW @ 3,500rpm | 154kW @ 3,750rpm | 125kW @ 3,500rpm | 154kW @ 3,750rpm |
| Maximum Torque | 405Nm @ 1,750-2,500rpm | 500Nm @ 1,750-2,000rpm | 405Nm @ 1,750-2,500rpm | 500Nm @ 1,750-2,000rpm |
| Transmissions | | | | |
| 6-speed automatic transmission | S | – | S | – |
| 10-speed automatic transmission | – | S | – | S |
| Driveline | | | | |
| RWD | – | – | – | – |
| Part-time 4x4 | S | S | S | S |
| Full-time 4WD | – | – | – | – |
| Selectable Drive Modes ¹ | | | | |
| - Normal | – | – | – | – |
| - Eco | – | – | – | – |
| - Tow / Haul | – | – | – | – |
| - Slippery | – | – | – | – |
| - Mud / Ruts ² | – | – | – | – |
| - Sand ³ | – | – | – | – |
| - Sport | – | – | – | – |
| - Baja ⁴ | – | – | – | – |
| - Rock Crawl ⁵ | – | – | – | – |
| Fuel | | | | |
| Combined Fuel Economy (L/100km)(Auto) ⁶ | 7.9 | 7.2/7.6 ⁷ | 8 | 7.2/7.6 ⁷ |
| CO ₂ Emissions (g/km)(Auto) ⁶ | 207 | 189/201 ⁷ | 211 | 189/201 ⁷ |
| Fuel Tank Capacity (L) | 80 | 80 | 80 | 80 |
| Fuel Type | Diesel | Diesel | Diesel | Diesel |
| Vehicle Masses (kg) | | | | |
| Gross Combined Mass ⁸ | 6200 | 6350 | 6200 | 6350 |
| Gross Vehicle Mass ⁸ | 3250 | 3250 | 3250 | 3250 |
| Front Gross Axle Weight Rating ⁸ | 1450 | 1490 | 1450 | 1490 |
| Rear Gross Axle Weight Rating ⁸ | 1959 | 1959 | 1959 | 1959 |
| Kerb Weight ⁸ | 2039 | 2062 | 2232 | 2256 |
| Payload (based on Kerb Weight) ⁸ | 1211 | 1188 | 1018 | 994 |
| Minimum Kerb Weight ⁸ | 2003 | 2024 | 2124 | 2144 |
| Payload (based on Min Kerb Weight) ⁸ | 1247 | 1226 | 1126 | 1106 |
| Tare Weight ⁸ | 1975 | 1998 | 2168 | 2192 |

4x4 | XL Ranger 2024.50MY Specifications

| | XL | XL | XL | XL |
|---|----------------------------|----------------------------|--------------------------|------------------------|
| | 4x4 Double Cab Cab-Chassis | 4x4 Double Cab Cab-Chassis | 4x4 Double Cab Pick-up | 4x4 Double Cab Pick-up |
| Engine | 2.0L Single Turbo | 2.0L Bi-Turbo | 2.0L Single Turbo | 2.0L Bi-Turbo |
| Pick-up Box Dimensions⁹ (mm) | | | | |
| Height - at centreline of axle | – | – | 529 | 529 |
| Height - floor height to ground | – | – | 816 | 816 |
| Length - at floor | – | – | 1547 | 1547 |
| Length - top of box | – | – | 1471 | 1471 |
| Width - between wheelhouses | – | – | 1224 | 1224 |
| Width - pick-up box | – | – | 1584 | 1584 |
| Width - rear opening | – | – | 1413 | 1413 |
| Exterior Dimensions⁹ (mm) | | | | |
| Length - with rear bumper (where fitted) without tow receiver ¹⁰ | 5225 | 5225 | 5370 | 5370 |
| Length - with rear bumper (where fitted) with tow receiver ¹⁰ | 5406 | 5406 | 5406 | 5406 |
| Width - exterior mirrors extended | 2208 | 2208 | 2208 | 2208 |
| Width - exterior mirrors folded | 2015 | 2015 | 2015 | 2015 |
| Width - excluding mirrors | 1910 | 1910 | 1910 | 1910 |
| Height - to top of antenna base | 1875 | 1875 | 1875 | 1875 |
| Overhang - front | 865 | 865 | 865 | 865 |
| Overhang - rear | 1070 | 1070 | 1215 | 1215 |
| Track - front and rear | 1620 | 1620 | 1620 | 1620 |
| Wheelbase | 3270 | 3270 | 3270 | 3270 |
| Ground Clearance (unladen) | 224 | 224 | 224 | 224 |
| Wading Depth ¹¹ | 800 | 800 | 800 | 800 |
| Approach Angle (unladen, degrees) | 29 | 29 | 29 | 29 |
| Departure Angle (unladen, degrees) ¹² | 29 | 29 | 25 | 25 |
| Ramp Breakover Angle (degrees) | 20 | 20 | 20 | 20 |
| Turning Circle (meters) | 12.9 | 12.9 | 12.9 | 12.9 |

Disclaimer:

1. Driver-assist features are supplemental and do not replace the driver's attention, judgment and need to control the vehicle. May not operate at certain speeds, or in certain driving, road or weather conditions. See Owner's Manual for more information. 2. Mud/Rut Mode intended for off-road use only. 3. Sand Mode intended for off-road use only. 4. Baja Mode intended for off-road use only. 5. Rock Crawl Mode intended for off-road use only. 6. Fuel consumption and emissions as per ADR 81/02 (combined cycle) and to be used for vehicle comparison purposes only. It is unlikely that these fuel consumption and emissions figures will be achieved in real world driving conditions. Actual fuel consumption and emissions will depend on many factors including the driver's habits, prevailing conditions and the vehicle's equipment, options and accessories, condition and use. 7. With Delete Auto Stop/Start System option selected. 8. Subject to State and Territory regulations. Kerb Weight includes the vehicle with a full tank of fuel, without occupants, luggage or cargo and with the heaviest possible combination of factory fitted optional equipment included. Minimum Kerb Weight includes the vehicle with a full tank of fuel, without occupants, luggage or cargo and with the lightest possible orderable combination of factory fit equipment. Tare Weight includes the vehicle with 10L of fuel, without occupants, luggage or cargo and with the heaviest possible combination of factory fitted optional equipment included. All payloads are calculated by deducting either the vehicle's Kerb Weight, Minimum Kerb Weight or Tare Weight from its Gross Vehicle Mass (GVM). Payload (based on Kerb Weight) is the maximum combined value of occupants, cargo, added accessories, added structures and tow ball download (when towing). Ranger Raptor payload is calculated by deducting the vehicle's Tare Weight from its Gross Vehicle Mass (GVM). All Chassis Cab payloads, kerb and tare weights exclude weights of tray bodies. Vehicle weights are approximate and subject to individual variances. Vehicles should be weighed before and after adding additional load, accessories or towing a trailer to ensure the maximum Gross Vehicle Mass (GVM), Gross Combined Mass (GCM) and Gross Axle Weight Ratings are not exceeded. 9. Vehicle dimensions are approximate and subject to individual vehicle variances, and should be confirmed before fitting any accessories or otherwise relying on this value. All Pick-up box dimensions take into account the Drop-In or Spray-In Bedliner where standard. 10. Vehicle length measured from front license plate bracket. 11. 800mm Water Wading achieved when maintaining a steady speed of 7 km/h. 12. Inclusive of tow bar where standard.

4x4 | XL Ranger 2024.50MY Specifications

| | XL | XL | XL | XL |
|--|----------------------------|----------------------------|------------------------|------------------------|
| | 4x4 Double Cab Cab-Chassis | 4x4 Double Cab Cab-Chassis | 4x4 Double Cab Pick-up | 4x4 Double Cab Pick-up |
| Engine | 2.0L Single Turbo | 2.0L Bi -Turbo | 2.0L Single Turbo | 2.0L Bi -Turbo |
| Interior Dimensions¹³ (mm) | | | | |
| 2nd Row Headroom | 989 | 989 | 989 | 989 |
| 2nd Row Legroom | 879 | 879 | 879 | 879 |
| 2nd Row Shoulder Room | 1440 | 1440 | 1440 | 1440 |
| Front Headroom | 1024 | 1024 | 1024 | 1024 |
| Front Legroom | 1057 | 1057 | 1057 | 1057 |
| Front Shoulder Room | 1450 | 1450 | 1450 | 1450 |
| Chassis & Suspension | | | | |
| Heavy Duty Suspension | S | S | S | S |
| Front Disc / Rear Drum brakes | S | S | S | S |
| Front and rear vented discs with electronic Brake Booster | – | – | – | – |
| Electrical Power Assisted Steering | S | S | S | S |
| Locking Rear Differential | S | S | S | S |
| Wheels | | | | |
| 16" Steel with All Season Tyres | S | S | S | S |
| 16" Alloy with All Season Tyres | – | – | – | – |
| 17" Alloy with All Season Tyres | – | – | – | – |
| 17" Alloy with All Terrain BF Goodrich KO2 Tyres | – | – | – | – |
| 18" Alloy with All Season Tyres | – | – | – | – |
| 18" Alloy with All Terrain Tyres | – | – | – | – |
| Spare Wheel - 16" Steel | S | S | S | S |
| Spare Wheel - 17" Steel | – | – | – | – |
| Spare Wheel - 17" Alloy | – | – | – | – |
| Spare Wheel - 18" Alloy | – | – | – | – |
| LT285/70R17 BF Goodrich KO2 High Performance All Terrain tyres | – | – | – | – |
| Exterior Lighting | | | | |
| Headlamps - Halogen | S | S | S | S |
| Headlamps - LED | – | – | – | – |
| Headlamps - Matrix LED with Auto Leveling & Dynamic Bending | – | – | – | – |
| Daytime Running Lamps - Halogen | S | S | S | S |
| Daytime Running Lamps - LED | – | – | – | – |
| Front Fog Lamps - Halogen | – | – | – | – |
| Front Fog Lamps - LED | – | – | – | – |
| Taillamps - Halogen | S | S | – | – |
| Taillamps - LED | – | – | S | S |
| Tailgate Mounted Stop Light | – | – | S | S |
| Zone Lighting ¹⁴ | – | – | – | – |

4x4 | XL Ranger 2024.50MY Specifications

| | XL | XL | XL | XL |
|--|----------------------------|----------------------------|------------------------|------------------------|
| | 4x4 Double Cab Cab-Chassis | 4x4 Double Cab Cab-Chassis | 4x4 Double Cab Pick-up | 4x4 Double Cab Pick-up |
| Engine | 2.0L Single Turbo | 2.0L Bi -Turbo | 2.0L Single Turbo | 2.0L Bi -Turbo |
| Exterior | | | | |
| Exterior Mirrors - Power Adjustable | S | S | S | S |
| Exterior Mirrors - Power Folding | – | – | S | S |
| Exterior Mirrors - Puddle Lamps | – | – | – | – |
| Steel Underbody Protection | S | S | S | S |
| Side Steps | – | – | – | – |
| Rear Box Step | – | – | S | S |
| Roof Rails | – | – | – | – |
| Sports Bar ¹⁵ | – | – | – | – |
| Sports Hoop/Sailplane ¹⁵ | – | – | – | – |
| Load Box Elements | | | | |
| Tailgate Ruler | – | – | S | S |
| Drop In Bedliner (without Tailgate Ruler) ¹⁵ | – | – | – | – |
| Tough Bed™ Spray-In Bedliner (incl. Tailgate Ruler) | – | – | – | – |
| 12V Socket in Bedliner | – | – | – | – |
| Box Top Protective Capping with Load Box Access Caps ¹⁵ | – | – | S | S |
| Aluminum Tie Down Rails ¹⁵ | – | – | – | – |
| Inner Tie Downs | – | – | S | S |
| Cargo Management System | – | – | – | – |
| Load Rest ¹⁵ | – | – | S | S |
| Load Box Illumination | – | – | S | S |
| Tailgate Cargo Clamps | – | – | S | S |
| Tailgate Cupholders | – | – | S | S |
| Power Tailgate Lock | – | – | – | – |
| Tailgate with Lift Assistance | – | – | S | S |
| Power Roller Shutter ¹⁵ | – | – | – | – |

S = Standard **O** = Factory Option that can be ordered before a vehicle is manufactured at an additional cost

P = Part of a Pack that can be ordered before a vehicle is manufactured at an additional cost **A** = Accessory fitted at Ford Dealer at an additional cost

Disclaimer:

13. Vehicle dimensions are approximate and subject to individual vehicle variances, and should be confirmed before fitting any accessories or otherwise relying on this value. All Pick-up box dimensions take into account the Drop-In or Spray-In Bedliner where standard. **14.** Zone Lighting will not operate if battery charge is insufficient. The length of time that Zone Lighting will operate depends on the battery charge, the types of lights fitted to the vehicle (LED or Bulb) and other electrical loads connected to the vehicle. The system will automatically turn off after a period of time to preserve the battery's engine starting performance.

15. Load Rest (XL/XLS), Sports Bar (XLT/Sport), Sports Hoop/Sailplane, Aluminum Tie Down Rails and Power Roller Shutter (Wildtrak) and Box Top Protective Capping with Load Box Access Caps not available when Canopy option selected. Load Rest (XL/XLS) not included when Manual Roller Shutter option selected. Drop In Bedliner may be trimmed to accommodate mounting brackets.

4x4 | XL Ranger 2024.50MY Specifications

| | XL | XL | XL | XL |
|--|----------------------------|----------------------------|------------------------|------------------------|
| | 4x4 Double Cab Cab-Chassis | 4x4 Double Cab Cab-Chassis | 4x4 Double Cab Pick-up | 4x4 Double Cab Pick-up |
| Engine | 2.0L Single Turbo | 2.0L Bi -Turbo | 2.0L Single Turbo | 2.0L Bi -Turbo |
| Interior, Seating and Door Trim | | | | |
| Leather Wrapped Steering Wheel & Gear Knob | – | – | – | – |
| Steering Wheel Reach & Height Adjust | S | S | S | S |
| Electric Parking Brake | – | – | – | – |
| e-Shifter | – | – | – | – |
| Seating Capacity | 5 | 5 | 5 | 5 |
| Heated Seats - Front Driver & Passenger | – | – | – | – |
| Seat Material - Cloth | S | S | S | S |
| Seat Material - Premium Cloth | – | – | – | – |
| Seat Material - Leather Accented (excluding 2nd row middle seat) ¹⁶ | – | – | – | – |
| Driver Seat - 8-Way Manual | S | S | S | S |
| Driver Seat - 8-Way Power | – | – | – | – |
| Front Passenger Seat - 4-Way Manual | S | S | S | S |
| Front Passenger Seat - 6-Way Manual | – | – | – | – |
| Front Passenger Seat - 8-Way Power | – | – | – | – |
| Driver & Front Passenger Seat 10-Way Power | – | – | – | – |
| Child Seat Upper Anchorage Points (x 2) | S | S | S | S |
| Child Seat ISOFIX Anchorage Points (x 2) | S | S | S | S |
| Floor Covering - Vinyl | S | S | S | S |
| Floor Covering - Carpet | – | – | – | – |
| Floor Mats - Driver | – | – | – | – |
| Floor Mats - Driver & Front Passenger | – | – | – | – |
| Comfort and Convenience | | | | |
| Ambient Lighting | – | – | – | – |
| Auxiliary Switch Bank | – | – | – | – |
| Centre Console with Single Lid and 2 Cup Holders | S | S | S | S |
| Instrument Panel Cup Holders | – | – | – | – |
| Charging | | | | |
| - Auxiliary 12V Power Outlet - Centre Console Bin | S | S | S | S |
| - Auxiliary 12V Power Outlet - Rear of Centre Console | S | S | S | S |
| - USB Ports | 3 | 3 | 3 | 3 |
| - Wireless Charging ¹⁷ | – | – | – | – |
| - 12V Socket in Bedliner | – | – | – | – |
| Climate Control - Single-Zone Manual | S | S | S | S |
| Climate Control - Dual-Zone | – | – | – | – |
| Rear Air Vent Registers | – | – | – | – |
| Auto Headlamp On-Off | S | S | S | S |
| Auto High Beam | – | – | – | – |
| Front Power Windows | S | S | S | S |
| Rear Power Windows | S | S | S | S |

4x4 | XL Ranger 2024.50MY Specifications

| | XL | XL | XL | XL |
|---|----------------------------|----------------------------|------------------------|------------------------|
| | 4x4 Double Cab Cab-Chassis | 4x4 Double Cab Cab-Chassis | 4x4 Double Cab Pick-up | 4x4 Double Cab Pick-up |
| Engine | 2.0L Single Turbo | 2.0L Bi -Turbo | 2.0L Single Turbo | 2.0L Bi -Turbo |
| Comfort and Convenience continues | | | | |
| Privacy Glass | – | – | – | – |
| Rain Sensing Windscreen Wipers | – | – | – | – |
| Rear Window Defrost | S | S | S | S |
| Electrochromatic Rear View Mirror | – | – | – | – |
| Underseat Stowage | S | S | S | S |
| Audio and Communication | | | | |
| Embedded Modem | S | S | S | S |
| FordPass Connect ¹⁸ | S | S | S | S |
| Colour Digital Instrument Cluster with Configurable Display - 8-inch | S | S | S | S |
| Colour Digital Instrument Cluster with Configurable Display - 12.4-inch | – | – | – | – |
| Colour Multi-Function Touch Screen Display - 10.1-inch | S | S | S | S |
| Colour Multi-Function Touch Screen Display - 12-inch | – | – | – | – |
| Speakers | 4 | 4 | 4 | 4 |
| B&O Premium Audio System (10 Speakers) ¹⁹ | – | – | – | – |
| Digital Audio (DAB+) | – | – | – | – |
| Bluetooth® with Phone / Audio Streaming ²⁰ | S | S | S | S |
| Built-In Satellite Navigation with one year of Connected Navigation Services included ²¹ | – | – | – | – |
| SYNC® 4A ²² | S | S | S | S |
| SYNC® 4A with Voice-Activated Controls ²² | – | – | – | – |
| Steering Wheel Audio/Function Control | S | S | S | S |
| Wireless Apple CarPlay™ & Android Auto™ ²³ | S | S | S | S |

S = Standard **O** = Factory Option that can be ordered before a vehicle is manufactured at an additional cost

P = Part of a Pack that can be ordered before a vehicle is manufactured at an additional cost **A** = Accessory fitted at Ford Dealer at an additional cost

Disclaimer:

16. Leather accented refers to seats with a combination of real and artificial leather. No leather in 2nd row middle seat. **17.** Wireless Charging only available with compatible phones. **18.** Use of FordPass is subject to the FordPass Terms and Privacy Policy available on ford.com.au/fordpass and requires a compatible mobile device, internet access and software (including software updates from time to time). FordPass functionality and appearance may change over time due to software updates. You are responsible for internet access, mobile network data and voice call services required for your use of the FordPass App on your mobile device, including associated fees. The FordPass App and FordPass Connect modem can only work when both are connected to the telecommunications network. The FordPass Connect modem will only function on the 3G or 4G telecommunications networks. When these networks are no longer available, the modem will stop functioning and the connected services and all data transmission via the modem will cease. Ford cannot guarantee that FordPass will be in fully operating condition at all times and the FordPass App may be unavailable or particular FordPass services interrupted. Ford is not responsible for any limitations or restrictions of the telecommunications network or of your mobile device. Warning: Local laws prohibit some phone functions while driving. Check your local road rules before using these functions. Use Remote Vehicle Start and Stop responsibly and only in well ventilated areas where you are aware of your vehicle's surroundings. **19.** BANG & OLUFSEN© 2024 and B&O© 2024. BANG & OLUFSEN™ and B&O™ are registered trademarks of Bang & Olufsen Group. Licensed by Harman Becker Automotive System Manufacturing Kft. All rights reserved. **20.** Bluetooth® is a registered trademark of Bluetooth SIG, Inc. and is under license. Some phones not compatible. **21.** Eligible vehicles receive Connected Navigation Services for 1 year from the Ford Express New Vehicle Warranty start date, after which time the Connected Navigation Services may cease to be available, or may be subject to a subscription fee. To use Connected Navigation Services, users must have created a FordPass App account (terms apply), have fully activated the vehicle's FordPass Connect modem and have SYNC Location set to 'on'. **22.** Don't drive distracted. Use voice operated systems where possible and don't use handheld devices while driving. Some features may be locked out while the vehicle is in gear. Not all SYNC features are compatible with all phones. SYNC screen appearance and functionality may change over time due to software updates. **23.** Apple CarPlay / Android Auto requires phone with compatible version of Apple iOS / Android™ (as applicable), active data service, and connection cable (sold separately). SYNC® does not control Apple CarPlay / Android Auto while in use. Apple / Google and other third parties are responsible for their respective functionality. Message and data rates may apply. Apple CarPlay, Siri Eyes Free, iPod and iPhone are trademarks of Apple Inc. registered in the US and other countries. Android Auto and Google Maps are trademarks of Google Inc. Ford Applink® is available on selected SYNC® models and is compatible with select smartphone platforms. Warning: Local laws prohibit some phone functions while driving. Check your local road rules before using these functions.

4x4 | XL Ranger 2024.50MY Specifications

| | XL | XL | XL | XL |
|--|----------------------------|----------------------------|------------------------|------------------------|
| | 4x4 Double Cab Cab-Chassis | 4x4 Double Cab Cab-Chassis | 4x4 Double Cab Pick-up | 4x4 Double Cab Pick-up |
| Engine | 2.0L Single Turbo | 2.0L Bi -Turbo | 2.0L Single Turbo | 2.0L Bi -Turbo |
| Safety and Security | | | | |
| Perimeter Alarm System | – | – | – | – |
| Airbags x 9 - Front, Side, Knee & Full Length Curtain (Driver & Passenger) & Far Side Driver Front Airbag | S | S | S | S |
| 3 Point Lap Sash Seat Belt - All Positions | S | S | S | S |
| Child Proof Rear Door Locks | S | S | S | S |
| Emergency Assistance ²⁴ | S | S | S | S |
| Power Door Locks | S | S | S | S |
| Smart Keyless Entry with Push Button Start | – | – | – | – |
| Driver Assistance | | | | |
| Active Park Assist 2.0 ²⁵ | – | – | – | – |
| Adaptive Cruise Control ²⁵ | S | S | S | S |
| Intelligent Adaptive Cruise Control with Stop & Go, Traffic Sign Recognition and Lane Centring ²⁶ | – | – | – | – |
| Intelligent Speed Assist ²⁷ | S | S | S | S |
| Blind Spot Monitoring with Cross Traffic Alert ²⁵ | – | – | S | S |
| Blind Spot Monitoring with Cross Traffic Alert and Trailer Coverage ²⁸ | – | – | P | P |
| Dynamic Stability Control (DSC) incorporating ABS, Electronic Brakeforce Distribution, Emergency Brake Assist, Hill Start Assist, Load Adaptive Control, Roll Over Mitigation, Traction Control & Trailer Sway Control ²⁵ | S | S | S | S |
| Evasive Steer Assist ²⁵ | S | S | S | S |
| Lane Keeping Aid with Road Edge Detection and Driver Alert System ²⁹ | S | S | S | S |
| Post Impact Braking ²⁵ | S | S | S | S |
| Pre-Collision Assist with Autonomous Emergency Braking (AEB) ³⁰ | S | S | S | S |
| Reverse Brake Assist ³¹ | – | – | S | S |
| Parking Sensors - Front ²⁵ | – | – | – | – |
| Parking Sensors - Rear ²⁵ | – | – | S | S |
| Rear View Camera - Analogue ³² | S | S | – | – |
| Rear View Camera - Integrated Digital ²⁵ | – | – | S | S |
| 360-Degree Camera ²⁵ | – | – | – | – |
| Traffic Sign Recognition ³³ | S | S | S | S |
| Tyre Pressure Monitoring System | – | – | – | – |
| Towing | | | | |
| Maximum Braked Towing Capacity (kg) ³⁴ | 3,500 | 3,500 | 3,500 | 3,500 |
| Pro Trailer Back-up Assist™ ²⁵ | – | – | – | – |
| Tow Bar with Integrated Trailer Brake Controller ³⁵ | O | O | O | O |
| Trailer Light Check ³⁶ | P | P | P | P |
| Towing Vehicle Integration with Towing Checklist | S | S | S | S |
| Tow Haul Mode (part of Selectable Drive Modes ²⁵) | – | – | – | – |

4x4 | XL Ranger 2024.50MY Specifications

| | XL | XL | XL | XL |
|--|----------------------------|----------------------------|------------------------|------------------------|
| | 4x4 Double Cab Cab-Chassis | 4x4 Double Cab Cab-Chassis | 4x4 Double Cab Pick-up | 4x4 Double Cab Pick-up |
| Engine | 2.0L Single Turbo | 2.0L Bi -Turbo | 2.0L Single Turbo | 2.0L Bi -Turbo |
| Off-Road | | | | |
| Off-Road Screen ²⁵ | – | – | – | – |
| Hill Descent Control ²⁵ | S | S | S | S |
| Locking Rear Differential | S | S | S | S |
| Front Recovery Hook | 1 | 1 | 1 | 1 |
| Rear Recovery Hook | – | – | – | – |
| Ford Factory Fitted Options | | | | |
| Delete Auto Stop/Start System | – | NCO | – | NCO |
| Commercial Canopy ³⁷ | – | – | O | O |
| Manual Roller Shutter ³⁸ | – | – | O | O |
| Stylish Canopy (Dual Lift) ³⁷ | – | – | O | O |
| Stylish Canopy (Lift and Slide) ³⁷ | – | – | O | O |
| 17" Steel Wheels with All Terrain Tyres with 17" Steel Spare Wheel | O | O | O | O |
| Additional XL Wheel Centre Cap Pack to Suit Wheel Nut Indicator Fitment | O | O | O | O |
| Towing Pack - Tow Bar with Integrated Trailer Brake Controller ³⁵ and Trailer Light Check ³⁶ | O | O | O | O |
| Blind Spot Monitoring Trailer Coverage ²⁸ | – | – | O | O |
| Prestige Paint | O | O | O | O |

S = Standard **O** = Factory Option that can be ordered before a vehicle is manufactured at an additional cost

P = Part of a Pack that can be ordered before a vehicle is manufactured at an additional cost **A** = Accessory fitted at Ford Dealer at an additional cost

NCO = No Cost Option that can be ordered before a vehicle is manufactured at no additional cost

Disclaimer:

24. Emergency Assistance feature needs a paired and in range mobile phone. Can activate in the event of a crash which deploys an airbag or activates the fuel pump shut off. **25.** Driver-assist features are supplemental and do not replace the driver's attention, judgment and need to control the vehicle. May not operate at certain speeds, or in certain driving, road or weather conditions. See Owner's Manual for more information. **26.** Driver-assist features are supplemental and do not replace the driver's attention, judgment and need to control the vehicle. May not operate at certain speeds, or in certain driving, road or weather conditions. Intelligent Adaptive Cruise Control (iACC) uses various data to adjust the set speed of the vehicle to the speed limit detected by the system. The iACC system will not always detect the correct speed limit and may set a vehicle speed that is above or below the actual speed limit. If the system does this, it can be overridden by the driver applying the brake or accelerator or via steering wheel controls. In some circumstances, iACC will use map data to set the vehicle speed. Ford recommends keeping map data updated by fully activating the vehicle's FordPass Connect modem and enabling Connected Navigation Services. Connected Navigation Services are included for 1 year from the Ford Express New Vehicle Warranty start date and available ongoing subject to payment of a subscription fee. **27.** Driver-assist features are supplemental and do not replace the driver's attention, judgment and need to control the vehicle. May not operate at certain speeds, or in certain driving, road or weather conditions. Intelligent Speed Assist (ISA) uses various data to limit the set speed of the vehicle to the speed limit detected by the system. The ISA system will not always detect the correct speed limit and may limit a vehicle speed above or below the actual speed limit. ISA can be temporarily overridden by the driver firmly pressing the accelerator. Customers should read the Owner's Manual for details of the limitations of the ISA system before activating. On Ranger models with Satellite Navigation, in some circumstances, ISA will use map data to limit the vehicle speed. Ford recommends keeping map data updated by fully activating the vehicle's FordPass Connect modem and enabling Connected Navigation Services. Connected Navigation Services are included for 1 year from the Ford Express New Vehicle Warranty start date and available ongoing subject to payment of a subscription fee. **28.** Driver-assist features are supplemental and do not replace the driver's attention, judgment and need to control the vehicle. May not operate at certain speeds, or in certain driving, road or weather conditions. See Owner's Manual for more information. Trailer Coverage system (requires a genuine factory fit tow bar) supports conventional trailer dimensions: up to 2.4m wide (measured at trailer front) and up to 10m long from the rear of your vehicle. Drivers will need to create a profile of their trailers in SYNC to support this system. **29.** Driver-assist features are supplemental and do not replace the driver's attention, judgment and need to control the vehicle. May not operate at certain speeds, or in certain driving, road or weather conditions. Please see Owner's Manual for more information. Reverse Brake Assist functions when in reverse and travelling at a speed of 2-12 km/h. **30.** Analogue Rear View Camera is provided and will need to be fitted to the vehicle by a body builder. Driver-assist features are supplemental and do not replace the driver's attention, judgment and need to control the vehicle. May not operate at certain speeds, or in certain driving, road or weather conditions. See Owner's Manual for more information. **31.** Driver-assist features are supplemental and do not replace the driver's attention, judgment and need to control the vehicle. May not operate at certain speeds, or in certain driving, road or weather conditions. See Owner's Manual for more information. Reverse Brake Assist functions when in reverse and travelling at a speed of 2-12 km/h. **32.** Analogue Rear View Camera is provided and will need to be fitted to the vehicle by a body builder. Driver-assist features are supplemental and do not replace the driver's attention, judgment and need to control the vehicle. May not operate at certain speeds, or in certain driving, road or weather conditions. See Owner's Manual for more information. **33.** Driver-assist features are supplemental and do not replace the driver's attention, judgment and need to control the vehicle. May not operate at certain speeds, or in certain driving, road or weather conditions. See Owner's Manual for more information. Speed Sign Recognition will not always detect the correct speed limit and may display a speed that is above or below the actual speed limit. On Ranger models with Satellite Navigation, in some circumstances Speed Sign Recognition will use map data to display the speed limit on the digital instrument cluster. Ford recommends keeping map data updated by fully activating the vehicle's FordPass Connect modem and enabling Connected Navigation Services. Connected Navigation Services are included for 1 year from the Ford Express New Vehicle Warranty start date and available ongoing subject to payment of a subscription fee. **34.** Maximum towing capacity-braked using a Genuine Ford tow pack. Subject to State and Territory regulations. To comply with these limits, occupants and / or luggage may need to be restricted to not exceed the GCM and GVM limits. For further details regarding passenger and luggage restrictions, please consult your authorised Ford Dealer and / or refer to the Owner's Manual. **35.** Drivers will need to create a profile of their trailers in SYNC to support the Trailer Brake Controller and must set the gain on the Brake Controller unit. **36.** Trailer Light Check requires a Genuine Ford Tow Bar to be fitted and can be used via SYNC, or via FordPass app as a Connected Service. Where used via the app as a Connected Service, eligible vehicles receive 1 year of service from the Ford Express New Vehicle Warranty start date after which time, the Connected Service may cease to be available, or may be subject to a subscription fee. Users must have created a FordPass App account (terms apply) and have fully activated the vehicle's FordPass Connect modem to use this feature via the app. **37.** Load Rest (XL/XLS), Sports Bar (XL/Sport), Sports Hoop/Sailplane, Aluminum Tie Down Rails and Power Roller Shutter (Wildtrak) and Box Top Protective Capping with Load Box Access Caps not available when Canopy option selected. Drop In Bedliner may be trimmed to accommodate mounting brackets. **38.** Load Rest (XL/XLS) not included when Manual Roller Shutter option selected. Drop In Bedliner may be trimmed to accommodate mounting brackets.

4x4 | XLS, XLT Ranger 2024.50MY Specifications

| | XLS | XLT | XLT | XLT |
|---|------------------------|------------------------|------------------------|----------------------------|
| | 4x4 Double Cab Pick-up | 4x4 Double Cab Pick-up | 4x4 Double Cab Pick-up | 4x4 Double Cab Cab-Chassis |
| Engine | 2.0L Bi -Turbo | 2.0L Bi -Turbo | 3.0L V6 Turbo-Diesel | 3.0L V6 Turbo-Diesel |
| Maximum Power | 154kW @ 3,750rpm | 154kW @ 3,750rpm | 184kW @ 3,250rpm | 184kW @ 3,250rpm |
| Maximum Torque | 500Nm @ 1,750-2,000rpm | 500Nm @ 1,750-2,000rpm | 600Nm @ 1,750-2,250rpm | 600Nm @ 1,750-2,250rpm |
| Transmissions | | | | |
| 6-speed automatic transmission | – | – | – | – |
| 10-speed automatic transmission | S | S | S | S |
| Driveline | | | | |
| RWD | – | – | – | – |
| Part-time 4x4 | S | S | – | – |
| Full-time 4WD | – | – | S | S |
| Selectable Drive Modes ¹ | | | | |
| - Normal | S | S | S | S |
| - Eco | S | S | S | S |
| - Tow / Haul | S | S | S | S |
| - Slippery | S | S | S | S |
| - Mud / Ruts ² | – | – | – | – |
| - Sand ³ | – | – | – | – |
| - Sport | – | – | – | – |
| - Baja ⁴ | – | – | – | – |
| - Rock Crawl ⁵ | – | – | – | – |
| Fuel | | | | |
| Combined Fuel Economy (L/100km)(Auto) ⁶ | 7.2/7.6 ⁷ | 7.2/7.6 ⁷ | 8.4 | 8.4 |
| CO ₂ Emissions (g/km)(Auto) ⁶ | 189/201 ⁷ | 189/201 ⁷ | 222 | 222 |
| Fuel Tank Capacity (L) | 80 | 80 | 80 | 80 |
| Fuel Type | Diesel | Diesel | Diesel | Diesel |
| Vehicle Masses (kg) | | | | |
| Gross Combined Mass ⁸ | 6350 | 6350 | 6400 | 6400 |
| Gross Vehicle Mass ⁸ | 3230 | 3230 | 3280 | 3280 |
| Front Gross Axle Weight Rating ⁸ | 1450 | 1450 | 1490 | 1490 |
| Rear Gross Axle Weight Rating ⁸ | 1959 | 1959 | 1959 | 1959 |
| Kerb Weight ⁸ | 2247 | 2276 | 2332 | 2130 |
| Payload (based on Kerb Weight) ⁸ | 983 | 954 | 948 | 1150 |
| Minimum Kerb Weight ⁸ | 2172 | 2175 | 2233 | 2097 |
| Payload (based on Min Kerb Weight) ⁸ | 1058 | 1055 | 1047 | 1183 |
| Tare Weight ⁸ | 2183 | 2212 | 2268 | 2066 |

4x4 | XLS, XLT Ranger 2024.50MY Specifications

| | XLS | XLT | XLT | XLT |
|---|------------------------|------------------------|------------------------|----------------------------|
| | 4x4 Double Cab Pick-up | 4x4 Double Cab Pick-up | 4x4 Double Cab Pick-up | 4x4 Double Cab Cab-Chassis |
| Engine | 2.0L Bi -Turbo | 2.0L Bi -Turbo | 3.0L V6 Turbo-Diesel | 3.0L V6 Turbo-Diesel |
| Pick-up Box Dimensions ⁹ (mm) | | | | |
| Height - at centreline of axle | 529 | 525 | 525 | – |
| Height - floor height to ground | 816 | 831 | 831 | – |
| Length - at floor | 1547 | 1464 | 1464 | – |
| Length - top of box | 1471 | 1468 | 1468 | – |
| Width - between wheelhouses | 1224 | 1217 | 1217 | – |
| Width - pick-up box | 1584 | 1520 | 1520 | – |
| Width - rear opening | 1413 | 1393 | 1393 | – |
| Exterior Dimensions ⁹ (mm) | | | | |
| Length - with rear bumper (where fitted) without tow receiver ¹⁰ | 5370 | 5370 | 5370 | 5225 |
| Length - with rear bumper (where fitted) with tow receiver ¹⁰ | 5406 | 5406 | 5406 | 5406 |
| Width - exterior mirrors extended | 2208 | 2208 | 2208 | 2208 |
| Width - exterior mirrors folded | 2015 | 2015 | 2015 | 2015 |
| Width - excluding mirrors | 1918 | 1918 | 1918 | 1910 |
| Height - to top of antenna base | 1875 | 1886 | 1886 | 1886 |
| Overhang - front | 865 | 865 | 865 | 865 |
| Overhang - rear | 1215 | 1215 | 1215 | 1070 |
| Track - front and rear | 1620 | 1620 | 1620 | 1620 |
| Wheelbase | 3270 | 3270 | 3270 | 3270 |
| Ground Clearance (unladen) | 224 | 234 | 234 | 234 |
| Wading Depth ¹¹ | 800 | 800 | 800 | 800 |
| Approach Angle (unladen, degrees) | 29 | 30 | 30 | 30 |
| Departure Angle (unladen, degrees) ¹² | 25 | 23 | 23 | 23 |
| Ramp Breakover Angle (degrees) | 20 | 21 | 21 | 21 |
| Turning Circle (meters) | 12.9 | 12.9 | 12.9 | 12.9 |

S = Standard O = Factory Option that can be ordered before a vehicle is manufactured at an additional cost

P = Part of a Pack that can be ordered before a vehicle is manufactured at an additional cost A = Accessory fitted at Ford Dealer at an additional cost

Some features may be impacted by the removal of the standard load box fitted to the vehicle.

Disclaimer:

1. Driver-assist features are supplemental and do not replace the driver's attention, judgment and need to control the vehicle. May not operate at certain speeds, or in certain driving, road or weather conditions. See Owner's Manual for more information. 2. Mud/Rut Mode intended for off-road use only. 3. Sand Mode intended for off-road use only. 4. Baja Mode intended for off-road use only. 5. Rock Crawl Mode intended for off-road use only. 6. Fuel consumption and emissions as per ADR 81/02 (combined cycle) and to be used for vehicle comparison purposes only. It is unlikely that these fuel consumption and emissions figures will be achieved in real world driving conditions. Actual fuel consumption and emissions will depend on many factors including the driver's habits, prevailing conditions and the vehicle's equipment, options and accessories, condition and use. 7. With Delete Auto Stop/Start System option selected. 8. Subject to State and Territory regulations. Kerb Weight includes the vehicle with a full tank of fuel, without occupants, luggage or cargo and with the heaviest possible combination of factory fitted optional equipment included. Minimum Kerb Weight includes the vehicle with a full tank of fuel, without occupants, luggage or cargo and with the lightest possible orderable combination of factory fit equipment. Tare Weight includes the vehicle with 10L of fuel, without occupants, luggage or cargo and with the heaviest possible combination of factory fitted optional equipment included. All payloads are calculated by deducting either the vehicle's Kerb Weight, Minimum Kerb Weight or Tare Weight from its Gross Vehicle Mass (GVM). Payload (based on Kerb Weight) is the maximum combined value of occupants, cargo, added accessories, added structures and tow ball download (when towing). Ranger Raptor payload is calculated by deducting the vehicle's Tare Weight from its Gross Vehicle Mass (GVM). All Chassis Cab payloads, kerb and tare weights exclude weights of tray bodies. Vehicle weights are approximate and subject to individual variances. Vehicles should be weighed before and after adding additional load, accessories or towing a trailer to ensure the maximum Gross Vehicle Mass (GVM), Gross Combined Mass (GCM) and Gross Axle Weight Ratings are not exceeded. 9. Vehicle dimensions are approximate and subject to individual vehicle variances, and should be confirmed before fitting any accessories or otherwise relying on this value. All Pick-up box dimensions take into account the Drop-In or Spray-In Bedliner where standard. 10. Vehicle length measured from front license plate bracket. 11. 800mm Water Wading achieved when maintaining a steady speed of 7 km/h. 12. Inclusive of tow bar where standard.

4x4 | XLS, XLT Ranger 2024.50MY Specifications

| | XLS | XLT | XLT | XLT |
|--|------------------------|------------------------|------------------------|----------------------------|
| | 4x4 Double Cab Pick-up | 4x4 Double Cab Pick-up | 4x4 Double Cab Pick-up | 4x4 Double Cab Cab-Chassis |
| Engine | 2.0L Bi -Turbo | 2.0L Bi -Turbo | 3.0L V6 Turbo-Diesel | 3.0L V6 Turbo-Diesel |
| Interior Dimensions¹³ (mm) | | | | |
| 2nd Row Headroom | 989 | 989 | 989 | 989 |
| 2nd Row Legroom | 879 | 879 | 879 | 879 |
| 2nd Row Shoulder Room | 1440 | 1440 | 1440 | 1440 |
| Front Headroom | 1024 | 1024 | 1024 | 1024 |
| Front Legroom | 1057 | 1057 | 1057 | 1057 |
| Front Shoulder Room | 1450 | 1450 | 1450 | 1450 |
| Chassis & Suspension | | | | |
| Front Disc / Rear Drum brakes | S | – | – | – |
| Front and rear vented discs with electronic Brake Booster | – | S | S | S |
| Electrical Power Assisted Steering | S | S | S | S |
| Heavy Duty Suspension | – | – | – | – |
| Locking Rear Differential | S | S | S | S |
| Wheels | | | | |
| 16" Steel with All Season Tyres | – | – | – | – |
| 16" Alloy with All Season Tyres | S | – | – | – |
| 17" Alloy with All Season Tyres | – | S | S | S |
| 17" Alloy with All Terrain BF Goodrich KO2 Tyres | – | – | – | – |
| 18" Alloy with All Season Tyres | – | – | – | – |
| 18" Alloy with All Terrain Tyres | – | – | – | – |
| Spare Wheel - 16" Steel | S | – | – | – |
| Spare Wheel - 17" Steel | – | S | S | S |
| Spare Wheel - 17" Alloy | – | – | – | – |
| Spare Wheel - 18" Alloy | – | – | – | – |
| LT285/70R17 BF Goodrich KO2 High Performance All Terrain tyres | – | – | – | – |
| Exterior Lighting | | | | |
| Headlamps - Halogen | S | – | – | – |
| Headlamps - LED | – | S | S | S |
| Headlamps - Matrix LED with Auto Leveling & Dynamic Bending | – | – | – | – |
| Daytime Running Lamps - Halogen | S | – | – | – |
| Daytime Running Lamps - LED | – | S | S | S |
| Front Fog Lamps - Halogen | S | S | – | – |
| Front Fog Lamps - LED | – | – | S | S |
| Taillamps - Halogen | – | – | – | S |
| Taillamps - LED | S | S | S | – |
| Tailgate Mounted Stop Light | S | S | S | – |
| Zone Lighting ¹⁴ | – | P | P | – |

4x4 | XLS, XLT Ranger 2024.50MY Specifications

| | XLS | XLT | XLT | XLT |
|--|------------------------|------------------------|------------------------|----------------------------|
| | 4x4 Double Cab Pick-up | 4x4 Double Cab Pick-up | 4x4 Double Cab Pick-up | 4x4 Double Cab Cab-Chassis |
| Engine | 2.0L Bi -Turbo | 2.0L Bi -Turbo | 3.0L V6 Turbo-Diesel | 3.0L V6 Turbo-Diesel |
| Exterior | | | | |
| Exterior Mirrors - Power Adjustable | S | S | S | S |
| Exterior Mirrors - Power Folding | S | S | S | S |
| Exterior Mirrors - Puddle Lamps | – | P | P | – |
| Steel Underbody Protection | S | S | S | S |
| Side Steps | S | S | S | S |
| Rear Box Step | S | S | S | – |
| Roof Rails | – | – | – | – |
| Sports Bar ¹⁵ | – | S | S | – |
| Sports Hoop/Sailplane ¹⁵ | – | – | – | – |
| Load Box Elements | | | | |
| Tailgate Ruler | S | – | – | – |
| Drop In Bedliner (without Tailgate Ruler) ¹⁵ | – | S | S | – |
| Tough Bed™ Spray-In Bedliner (incl. Tailgate Ruler) | – | – | – | – |
| 12V Socket in Bedliner | – | S | S | – |
| Box Top Protective Capping with Load Box Access Caps ¹⁵ | S | S | S | – |
| Aluminum Tie Down Rails ¹⁵ | – | – | – | – |
| Inner Tie Downs | S | S | S | – |
| Cargo Management System | – | P | P | – |
| Load Rest ¹⁵ | S | – | – | – |
| Load Box Illumination | S | S | S | – |
| Tailgate Cargo Clamps | S | S | S | – |
| Tailgate Cupholders | S | S | S | – |
| Power Tailgate Lock | S | S | S | – |
| Tailgate with Lift Assistance | S | S | S | – |
| Power Roller Shutter ¹⁵ | – | – | – | – |

S = Standard **O** = Factory Option that can be ordered before a vehicle is manufactured at an additional cost

P = Part of a Pack that can be ordered before a vehicle is manufactured at an additional cost **A** = Accessory fitted at Ford Dealer at an additional cost

Disclaimer:

13. Vehicle dimensions are approximate and subject to individual vehicle variances, and should be confirmed before fitting any accessories or otherwise relying on this value. All Pick-up box dimensions take into account the Drop-In or Spray-In Bedliner where standard. **14.** Zone Lighting will not operate if battery charge is insufficient. The length of time that Zone Lighting will operate depends on the battery charge, the types of lights fitted to the vehicle (LED or Bulb) and other electrical loads connected to the vehicle. The system will automatically turn off after a period of time to preserve the battery's engine starting performance.

15. Load Rest (XL/XLS), Sports Bar (XLT/Sport), Sports Hoop/Sailplane, Aluminum Tie Down Rails and Power Roller Shutter (Wildtrak) and Box Top Protective Capping with Load Box Access Caps not available when Canopy option selected. Load Rest (XL/XLS) not included when Manual Roller Shutter option selected. Drop In Bedliner may be trimmed to accommodate mounting brackets.

4x4 | XLS, XLT Ranger 2024.50MY Specifications

| | XLS | XLT | XLT | XLT |
|--|------------------------|------------------------|------------------------|----------------------------|
| | 4x4 Double Cab Pick-up | 4x4 Double Cab Pick-up | 4x4 Double Cab Pick-up | 4x4 Double Cab Cab-Chassis |
| Engine | 2.0L Bi -Turbo | 2.0L Bi -Turbo | 3.0L V6 Turbo-Diesel | 3.0L V6 Turbo-Diesel |
| Interior, Seating and Door Trim | | | | |
| Leather Wrapped Steering Wheel & Gear Knob | – | S | S | S |
| Steering Wheel Reach & Height Adjust | S | S | S | S |
| Electric Parking Brake | – | S | S | S |
| e-Shifter | – | – | S | S |
| Seating Capacity | 5 | 5 | 5 | 5 |
| Heated Seats - Front Driver & Passenger | – | – | – | – |
| Seat Material - Cloth | S | – | – | – |
| Seat Material - Premium Cloth | – | S | S | S |
| Seat Material - Leather Accented (excluding 2nd row middle seat) ¹⁶ | – | – | – | – |
| Driver Seat - 8-Way Manual | S | S | S | S |
| Driver Seat - 8-Way Power | – | – | – | – |
| Front Passenger Seat - 4-Way Manual | S | S | S | S |
| Front Passenger Seat - 6-Way Manual | – | – | – | – |
| Front Passenger Seat - 8-Way Power | – | – | – | – |
| Driver & Front Passenger Seat 10-Way Power | – | – | – | – |
| Child Seat Upper Anchorage Points (x 2) | S | S | S | S |
| Child Seat ISOFIX Anchorage Points (x 2) | S | S | S | S |
| Floor Covering - Vinyl | – | – | – | – |
| Floor Covering - Carpet | S | S | S | S |
| Floor Mats - Driver | S | S | S | S |
| Floor Mats - Driver & Front Passenger | – | – | – | – |
| Comfort and Convenience | | | | |
| Ambient Lighting | – | – | – | – |
| Auxiliary Switch Bank | – | P | P | O |
| Centre Console with Single Lid and 2 Cup Holders | S | S | S | S |
| Instrument Panel Cup Holders | – | – | – | – |
| Charging | | | | |
| - Auxiliary 12V Power Outlet - Centre Console Bin | S | S | S | S |
| - Auxiliary 12V Power Outlet - Rear of Centre Console | S | S | S | S |
| - USB Ports | 3 | 3 | 3 | 3 |
| - Wireless Charging ¹⁷ | – | – | – | – |
| - 12V Socket in Bedliner | – | S | S | – |
| Climate Control - Single-Zone Manual | – | – | – | – |
| Climate Control - Dual-Zone | S | S | S | S |
| Rear Air Vent Registers | S | S | S | S |
| Auto Headlamp On-Off | S | S | S | S |
| Auto High Beam | – | – | – | – |
| Front Power Windows | S | S | S | S |

4x4 | XLS, XLT Ranger 2024.50MY Specifications

| | XLS | XLT | XLT | XLT |
|---|------------------------|------------------------|------------------------|----------------------------|
| | 4x4 Double Cab Pick-up | 4x4 Double Cab Pick-up | 4x4 Double Cab Pick-up | 4x4 Double Cab Cab-Chassis |
| Engine | 2.0L Bi -Turbo | 2.0L Bi -Turbo | 3.0L V6 Turbo-Diesel | 3.0L V6 Turbo-Diesel |
| Comfort and Convenience continues | | | | |
| Rear Power Windows | S | S | S | S |
| Privacy Glass | – | S | S | S |
| Rain Sensing Windscreen Wipers | – | S | S | S |
| Rear Window Defrost | S | S | S | S |
| Electrochromatic Rear View Mirror | – | S | S | S |
| Underseat Stowage | S | S | S | S |
| Audio and Communication | | | | |
| Embedded Modem | S | S | S | S |
| FordPass Connect ¹⁸ | S | S | S | S |
| Colour Digital Instrument Cluster with Configurable Display - 8-inch | S | S | S | S |
| Colour Digital Instrument Cluster with Configurable Display - 12.4-inch | – | – | – | – |
| Colour Multi-Function Touch Screen Display - 10.1-inch | S | S | S | S |
| Colour Multi-Function Touch Screen Display - 12-inch | – | – | – | – |
| Speakers | 6 | 6 | 6 | 6 |
| B&O Premium Audio System (10 Speakers) ¹⁹ | – | – | – | – |
| Digital Audio (DAB+) | S | S | S | S |
| Bluetooth® with Phone / Audio Streaming ²⁰ | S | S | S | S |
| Built-In Satellite Navigation with one year of Connected Navigation Services included ²¹ | S | S | S | S |
| SYNC®4A ²² | – | – | – | – |
| SYNC®4A with Voice-Activated Controls ²² | S | S | S | S |
| Steering Wheel Audio/Function Control | S | S | S | S |
| Wireless Apple CarPlay™ & Android Auto™ ²³ | S | S | S | S |

S = Standard **O** = Factory Option that can be ordered before a vehicle is manufactured at an additional cost

P = Part of a Pack that can be ordered before a vehicle is manufactured at an additional cost **A** = Accessory fitted at Ford Dealer at an additional cost

Disclaimer:

16. Leather accented refers to seats with a combination of real and artificial leather. No leather in 2nd row middle seat. **17.** Wireless Charging only available with compatible phones. **18.** Use of FordPass is subject to the FordPass Terms and Privacy Policy available on ford.com.au/fordpass and requires a compatible mobile device, internet access and software (including software updates from time to time). FordPass functionality and appearance may change over time due to software updates. You are responsible for internet access, mobile network data and voice call services required for your use of the FordPass App on your mobile device, including associated fees. The FordPass App and FordPass Connect modem can only work when both are connected to the telecommunications network. The FordPass Connect modem will only function on the 3G or 4G telecommunications networks. When these networks are no longer available, the modem will stop functioning and the connected services and all data transmission via the modem will cease. Ford cannot guarantee that FordPass will be in fully operating condition at all times and the FordPass App may be unavailable or particular FordPass services interrupted. Ford is not responsible for any limitations or restrictions of the telecommunications network or of your mobile device. Warning: Local laws prohibit some phone functions while driving. Check your local road rules before using these functions. Use Remote Vehicle Start and Stop responsibly and only in well ventilated areas where you are aware of your vehicle's surroundings. **19.** BANG & OLUFSEN© 2024 and B&O© 2024. BANG & OLUFSEN™ and B&O™ are registered trademarks of Bang & Olufsen Group. Licensed by Harman Becker Automotive System Manufacturing Kft. All rights reserved. **20.** Bluetooth® is a registered trademark of Bluetooth SIG, Inc. and is under license. Some phones not compatible. **21.** Eligible vehicles receive Connected Navigation Services for 1 year from the Ford Express New Vehicle Warranty start date, after which time the Connected Navigation Services may cease to be available, or may be subject to a subscription fee. To use Connected Navigation Services, users must have created a FordPass App account (terms apply), have fully activated the vehicle's FordPass Connect modem and have SYNC Location set to 'on'. **22.** Don't drive distracted. Use voice operated systems where possible and don't use handheld devices while driving. Some features may be locked out while the vehicle is in gear. Not all SYNC features are compatible with all phones. SYNC screen appearance and functionality may change over time due to software updates. **23.** Apple CarPlay / Android Auto requires phone with compatible version of Apple iOS / Android™ (as applicable), active data service, and connection cable (sold separately). SYNC® does not control Apple CarPlay / Android Auto while in use. Apple / Google and other third parties are responsible for their respective functionality. Message and data rates may apply. Apple CarPlay, Siri Eyes Free, iPod and iPhone are trademarks of Apple Inc. registered in the US and other countries. Android Auto and Google Maps are trademarks of Google Inc. Ford Applink® is available on selected SYNC® models and is compatible with select smartphone platforms. Warning: Local laws prohibit some phone functions while driving. Check your local road rules before using these functions

4x4 | XLS, XLT Ranger 2024.50MY Specifications

| | XLS | XLT | XLT | XLT |
|--|------------------------|------------------------|------------------------|----------------------------|
| | 4x4 Double Cab Pick-up | 4x4 Double Cab Pick-up | 4x4 Double Cab Pick-up | 4x4 Double Cab Cab-Chassis |
| Engine | 2.0L Bi -Turbo | 2.0L Bi -Turbo | 3.0L V6 Turbo-Diesel | 3.0L V6 Turbo-Diesel |
| Safety and Security | | | | |
| Perimeter Alarm System | S | S | S | S |
| Airbags x 9 - Front, Side, Knee & Full Length Curtain (Driver & Passenger) & Far Side Driver Front Airbag | S | S | S | S |
| 3 Point Lap Sash Seat Belt - All Positions | S | S | S | S |
| Child Proof Rear Door Locks | S | S | S | S |
| Emergency Assistance ²⁴ | S | S | S | S |
| Power Door Locks | S | S | S | S |
| Smart Keyless Entry with Push Button Start | S | S | S | S |
| Driver Assistance | | | | |
| Active Park Assist 2.0 ²⁵ | – | – | – | – |
| Adaptive Cruise Control ²⁵ | S | – | – | – |
| Intelligent Adaptive Cruise Control with Stop & Go, Traffic Sign Recognition and Lane Centring ²⁶ | – | S | S | S |
| Intelligent Speed Assist ²⁷ | S | S | S | S |
| Blind Spot Monitoring with Cross Traffic Alert ²⁵ | – | – | – | – |
| Blind Spot Monitoring with Cross Traffic Alert and Trailer Coverage ²⁸ | S | S | S | – |
| Dynamic Stability Control (DSC) incorporating ABS, Electronic Brakeforce Distribution, Emergency Brake Assist, Hill Start Assist, Load Adaptive Control, Roll Over Mitigation, Traction Control & Trailer Sway Control ²⁵ | S | S | S | S |
| Evasive Steer Assist ²⁵ | S | S | S | S |
| Lane Keeping Aid with Road Edge Detection and Driver Alert System ²⁹ | S | S | S | S |
| Post Impact Braking ²⁵ | S | S | S | S |
| Pre-Collision Assist with Autonomous Emergency Braking (AEB) ³⁰ | S | S | S | S |
| Reverse Brake Assist ³¹ | S | S | S | – |
| Parking Sensors - Front ²⁵ | S | S | S | – |
| Parking Sensors - Rear ²⁵ | S | S | S | – |
| Rear View Camera - Analogue ³² | – | – | – | S |
| Rear View Camera - Integrated Digital ²⁵ | S | S | S | – |
| 360-Degree Camera ²⁵ | – | P | P | – |
| Traffic Sign Recognition ³³ | S | S | S | S |
| Tyre Pressure Monitoring System | – | S | S | S |
| Towing | | | | |
| Maximum Braked Towing Capacity (kg) ³⁴ | 3,500 | 3,500 | 3,500 | 3,500 |
| Pro Trailer Back-up Assist™ ²⁵ | – | P | P | – |
| Tow Bar with Integrated Trailer Brake Controller ³⁵ | S | S | S | S |
| Trailer Light Check ³⁶ | S | S | S | S |
| Towing Vehicle Integration with Towing Checklist | S | S | S | S |
| Tow Haul Mode (part of Selectable Drive Modes ²⁵) | S | S | S | S |

4x4 | XLS, XLT Ranger 2024.50MY Specifications

| | XLS | XLT | XLT | XLT |
|---|------------------------|------------------------|------------------------|----------------------------|
| | 4x4 Double Cab Pick-up | 4x4 Double Cab Pick-up | 4x4 Double Cab Pick-up | 4x4 Double Cab Cab-Chassis |
| Engine | 2.0L Bi -Turbo | 2.0L Bi -Turbo | 3.0L V6 Turbo-Diesel | 3.0L V6 Turbo-Diesel |
| Off-Road | | | | |
| Off-Road Screen | – | – | – | – |
| Hill Descent Control ²⁵ | S | S | S | S |
| Locking Rear Differential | S | S | S | S |
| Front Recovery Hook | 1 | 1 | 1 | 1 |
| Rear Recovery Hook | – | – | – | – |
| Ford Factory Fitted Options | | | | |
| Delete Auto Stop/Start System | NCO | NCO | – | – |
| Auxiliary Switch Bank | – | P | P | O |
| 17" All Terrain Tyres | – | O | O | O |
| Manual Roller Shutter ³⁷ | O | O | O | – |
| Commercial Canopy ³⁸ | O | O | O | – |
| Stylish Canopy (Lift and Slide) ³⁸ | O | O | O | – |
| Stylish Canopy (Dual Lift) ³⁸ | O | O | O | – |
| Touring Pack - Cargo Management System, Auxiliary Switch Bank, 360 Camera, ²⁵ Puddle Lamps & Zone Lighting ³⁹ | – | O | O | – |
| Pro Trailer Back-up Assist™ ²⁵ | – | – | – | – |
| Prestige Paint | O | O | O | O |

S = Standard **O** = Factory Option that can be ordered before a vehicle is manufactured at an additional cost

P = Part of a Pack that can be ordered before a vehicle is manufactured at an additional cost **A** = Accessory fitted at Ford Dealer at an additional cost

NCO = No Cost Option that can be ordered before a vehicle is manufactured at no additional cost

Disclaimer:

24. Emergency Assistance feature needs a paired and in range mobile phone. Can activate in the event of a crash which deploys an airbag or activates the fuel pump shut off. **25.** Driver-assist features are supplemental and do not replace the driver's attention, judgment and need to control the vehicle. May not operate at certain speeds, or in certain driving, road or weather conditions. See Owner's Manual for more information. **26.** Driver-assist features are supplemental and do not replace the driver's attention, judgment and need to control the vehicle. May not operate at certain speeds, or in certain driving, road or weather conditions. Intelligent Adaptive Cruise Control (iACC) uses various data to adjust the set speed of the vehicle to the speed limit detected by the system. The iACC system will not always detect the correct speed limit and may set a vehicle speed that is above or below the actual speed limit. If the system does this, it can be overridden by the driver applying the brake or accelerator or via steering wheel controls. In some circumstances, iACC will use map data to set the vehicle speed. Ford recommends keeping map data updated by fully activating the vehicle's FordPass Connect modem and enabling Connected Navigation Services. Connected Navigation Services are included for 1 year from the Ford Express New Vehicle Warranty start date and available ongoing subject to payment of a subscription fee. Adaptive Cruise Control and Lane Centring has a minimum operating speed of 20km/hr. Detection of lower speed limit will result in system entering standby when iACC is active. The Stop and Go functionality of this system operates as low as 0km/hr in traffic jam situations. Lane Centring feature should be disabled via the Driver Assistance menu in SYNC before towing. Customers should read the Owner's Manual for details of the limitations of the iACC system before activating. Speed Sign Recognition will not always detect the correct speed limit and may display a speed that is above or below the actual speed limit. On Ranger models with Satellite Navigation, in some circumstances, Speed Sign Recognition will use map data to display the speed limit on the digital instrument cluster. Ford recommends keeping map data updated by fully activating the vehicle's FordPass Connect modem and enabling Connected Navigation Services. Connected Navigation Services are included for 1 year from the Ford Express New Vehicle Warranty start date and available ongoing subject to payment of a subscription fee. **27.** Driver-assist features are supplemental and do not replace the driver's attention, judgment and need to control the vehicle. May not operate at certain speeds, or in certain driving, road or weather conditions. Intelligent Speed Assist (ISA) uses various data to limit the set speed of the vehicle to the speed limit detected by the system. The ISA system will not always detect the correct speed limit and may limit a vehicle speed above or below the actual speed limit. ISA can be temporarily overridden by the driver firmly pressing the accelerator. Customers should read the Owner's Manual for details of the limitations of the ISA system before activating. On Ranger models with Satellite Navigation, in some circumstances, ISA will use map data to limit the vehicle speed. Ford recommends keeping map data updated by fully activating the vehicle's FordPass Connect modem and enabling Connected Navigation Services. Connected Navigation Services are included for 1 year from the Ford Express New Vehicle Warranty start date and available ongoing subject to payment of a subscription fee. **28.** Driver-assist features are supplemental and do not replace the driver's attention, judgment and need to control the vehicle. May not operate at certain speeds, or in certain driving, road or weather conditions. See Owner's Manual for more information. Trailer Coverage system (requires a genuine factory fit tow bar) supports conventional trailer dimensions: up to 2.4m wide (measured at trailer front) and up to 10m long from the rear of your vehicle. Drivers will need to create a profile of their trailers in SYNC to support this system. **29.** Driver-assist features are supplemental and do not replace the driver's attention, judgment and need to control the vehicle. May not operate at certain speeds, or in certain driving, road or weather conditions. See Owner's Manual for more information. Road Edge Detection designed for use on rural roads at speeds of 65 – 110km/h. The feature does not detect every edge and does require a level of contrast between the road surface and the edge. **30.** Driver-assist features are supplemental and do not replace the driver's attention, judgment and need to control the vehicle. May not operate at certain speeds, or in certain driving, road or weather conditions. See Owner's Manual for more information. Pre-collision Assist with Automatic Emergency Braking detects pedestrians, but not in all conditions, and can help avoid or reduce a collision. It does not replace safe driving. See Owner's Manual for Limitations. **31.** Driver-assist features are supplemental and do not replace the driver's attention, judgment and need to control the vehicle. May not operate at certain speeds, or in certain driving, road or weather conditions. Please see Owner's Manual for more information. Reverse Brake Assist functions when in reverse and travelling at a speed of 2-12 km/h. **32.** Analogue Rear View Camera is provided and will need to be fitted to the vehicle by a body builder. Driver-assist features are supplemental and do not replace the driver's attention, judgment and need to control the vehicle. May not operate at certain speeds, or in certain driving, road or weather conditions. See Owner's Manual for more information. **33.** Driver-assist features are supplemental and do not replace the driver's attention, judgment and need to control the vehicle. May not operate at certain speeds, or in certain driving, road or weather conditions. See Owner's Manual for more information. Speed Sign Recognition will not always detect the correct speed limit and may display a speed that is above or below the actual speed limit. On Ranger models with Satellite Navigation, in some circumstances Speed Sign Recognition will use map data to display the speed limit on the digital instrument cluster. Ford recommends keeping map data updated by fully activating the vehicle's FordPass Connect modem and enabling Connected Navigation Services. Connected Navigation Services are included for 1 year from the Ford Express New Vehicle Warranty start date and available ongoing subject to payment of a subscription fee. **34.** Maximum towing capacity-braked using a Genuine Ford tow pack. Subject to State and Territory regulations. To comply with these limits, occupants and / or luggage may need to be restricted to not exceed the GCM and GVM limits. For further details regarding passenger and luggage restrictions, please consult your authorised Ford Dealer and / or refer to the Owner's Manual. **35.** Drivers will need to create a profile of their trailers in SYNC to support the Trailer Brake Controller and must set the gain on the Brake Controller unit. **36.** Trailer Light Check requires a Genuine Ford Tow Bar to be fitted and can be used via SYNC, or via FordPass app as a Connected Service. Where used via the app as a Connected Service, eligible vehicles receive 1 year of service from the Ford Express New Vehicle Warranty start date after which time, the Connected Service may cease to be available, or may be subject to a subscription fee. Users must have created a FordPass App account (terms apply) and have fully activated the vehicle's FordPass Connect modem to use this feature via the app. **37.** Load Rest (XL/XLS) not included when Manual Roller Shutter option selected. Drop In Bedliner may be trimmed to accommodate mounting brackets. **38.** Load Rest (XL/XLS), Sports Bar (XLT/Sport), Sports Hoop/Sailplane, Aluminum Tie Down Rails and Power Roller Shutter (Wildtrak) and Box Top Protective Capping with Load Box Access Caps not available when Canopy option selected. Drop In Bedliner may be trimmed to accommodate mounting brackets. **39.** Zone Lighting will not operate if battery charge is insufficient. The length of time that Zone Lighting will operate depends on the battery charge, the types of lights fitted to the vehicle (LED or Bulb) and other electrical loads connected to the vehicle. The system will automatically turn off after a period of time to preserve the battery's engine starting performance.

4x4 | Sport, Wildtrak, Platinum, Raptor Ranger 2024.50MY Specifications

| | Sport | Sport | Wildtrak | Wildtrak | Platinum | Raptor |
|--|------------------------|-----------------------------|------------------------|-----------------------------|-----------------------------|------------------------------------|
| | 4x4 Double Cab Pick-up | 4x4 Double Cab Pick-up | 4x4 Double Cab Pick-up | 4x4 Double Cab Pick-up | 4x4 Double Cab Pick-up | 4x4 Double Cab Pick-up |
| Engine | 2.0L Bi -Turbo | 3.0L V6 Turbo-Diesel | 2.0L Bi -Turbo | 3.0L V6 Turbo-Diesel | 3.0L V6 Turbo-Diesel | 3.0L V6 Twin-Turbo EcoBoost |
| Maximum Power | 154kW @ 3,750rpm | 184kW @ 3,250rpm | 154kW @ 3,750rpm | 184kW @ 3,250rpm | 184kW @ 3,250rpm | 292kW @ 5,650rpm ¹ |
| Maximum Torque | 500Nm @ 1,750-2,000rpm | 600Nm @ 1,750-2,250rpm | 500Nm @ 1,750-2,000rpm | 600Nm @ 1,750-2,250rpm | 600Nm @ 1,750-2,250rpm | 583Nm @ 3,500rpm ¹ |
| Transmissions | | | | | | |
| 6-speed automatic transmission | – | – | – | – | – | – |
| 10-speed automatic transmission | S | S | S | S | S | S |
| Driveline | | | | | | |
| RWD | – | – | – | – | – | – |
| Part-time 4x4 | S | – | S | – | – | – |
| Full-time 4WD | – | S | – | S | S | S |
| Selectable Drive Modes ² | | | | | | |
| - Normal | S | S | S | S | S | S |
| - Eco | S | S | S | S | S | – |
| - Tow / Haul | S | S | S | S | S | – |
| - Slippery | S | S | S | S | S | S |
| - Mud / Ruts ³ | S | S | S | S | S | S |
| - Sand ⁴ | S | S | S | S | S | S |
| - Sport | – | – | – | – | – | S |
| - Baja ⁵ | – | – | – | – | – | S |
| - Rock Crawl ⁶ | – | – | – | – | – | S |
| Fuel | | | | | | |
| Combined Fuel Economy (L/100km) (Auto) ⁷ | 7.2/7.6 ⁸ | 8.4 | 7.2/7.6 ⁸ | 8.4 | 8.4 | 11.5 |
| CO ₂ Emissions (g/km) (Auto) ⁷ | 189/201 ⁸ | 222 | 189/201 ⁸ | 222 | 222 | 262 |
| Fuel Tank Capacity (L) | 80 | 80 | 80 | 80 | 80 | 80 |
| Fuel Type | Diesel | Diesel | Diesel | Diesel | Diesel | Petrol |
| Vehicle Masses (kg) | | | | | | |
| Gross Combined Mass ⁹ | 6350 | 6400 | 6350 | 6400 | 6400 | 5370 |
| Gross Vehicle Mass ⁹ | 3230 | 3280 | 3280 | 3350 | 3300 | 3130 |
| Front Gross Axle Weight Rating ⁹ | 1450 | 1490 | 1490 | 1490 | 1490 | 1520 |
| Rear Gross Axle Weight Rating ⁹ | 1959 | 1959 | 1959 ¹⁰ | 1959 ¹⁰ | 1900 | 1700 |
| Kerb Weight ⁹ | 2296 | 2351 | 2329 | 2384 | 2388 | 2473 |
| Payload (based on Kerb Weight) ⁹ | 934 | 929 | 951 | 966 | 912 | – |
| Minimum Kerb Weight ⁹ | 2193 | 2250 | 2283 | 2340 | 2388 | 2413 |
| Payload (based on Min Kerb Weight) ⁹ | 1037 | 1030 | 997 | 1010 | 912 | 717 |
| Tare Weight ⁹ | 2232 | 2287 | 2265 | 2320 | 2324 | 2419 |
| Payload (based on Tare Weight) ⁹ | – | – | – | – | – | 711 |

4x4 | Sport, Wildtrak, Platinum, Raptor Ranger 2024.50MY Specifications

| | Sport | Sport | Wildtrak | Wildtrak | Platinum | Raptor |
|---|------------------------|-----------------------------|------------------------|-----------------------------|-----------------------------|------------------------------------|
| | 4x4 Double Cab Pick-up | 4x4 Double Cab Pick-up | 4x4 Double Cab Pick-up | 4x4 Double Cab Pick-up | 4x4 Double Cab Pick-up | 4x4 Double Cab Pick-up |
| Engine | 2.0L Bi -Turbo | 3.0L V6 Turbo-Diesel | 2.0L Bi -Turbo | 3.0L V6 Turbo-Diesel | 3.0L V6 Turbo-Diesel | 3.0L V6 Twin-Turbo EcoBoost |
| Pick-up Box Dimensions¹¹ (mm) | | | | | | |
| Height - at centreline of axle | 525 | 525 | 525 | 525 | 525 | 526 |
| Height - floor height to ground | 831 | 831 | 831 | 831 | 831 | 870 |
| Length - at floor | 1464 | 1464 | 1464 | 1464 | 1464 | 1541 |
| Length - top of box | 1468 | 1468 | 1468 | 1468 | 1468 | 1468 |
| Width - between wheelhouses | 1217 | 1217 | 1217 | 1217 | 1217 | 1218 |
| Width - pick-up box | 1520 | 1520 | 1520 | 1520 | 1520 | 1578 |
| Width - rear opening | 1393 | 1393 | 1393 | 1393 | 1393 | 1407 |
| Exterior Dimensions¹¹ (mm) | | | | | | |
| Length - with rear bumper (where fitted) without tow receiver ¹² | 5370 | 5370 | 5370 | 5370 | 5370 | 5380 |
| Length - with rear bumper (where fitted) with tow receiver ¹² | 5406 | 5406 | 5406 | 5406 | 5406 | 5425 |
| Width - exterior mirrors extended | 2208 | 2208 | 2208 | 2208 | 2208 | 2208 |
| Width - exterior mirrors folded | 2015 | 2015 | 2015 | 2015 | 2015 | 2028 |
| Width - excluding mirrors | 1918 | 1918 | 1918 | 1918 | 1918 | 2028 |
| Height - to top of antenna base | 1886 | 1886 | 1886 | 1886 | – | 1926 |
| Height - to top of flexible rack system | – | – | – | – | 1920 | – |
| Overhang - front | 865 | 865 | 865 | 865 | 865 | 865 |
| Overhang - rear | 1215 | 1215 | 1215 | 1215 | 1215 | 1225 |
| Track - front and rear | 1620 | 1620 | 1620 | 1620 | 1620 | 1710 |
| Wheelbase | 3270 | 3270 | 3270 | 3270 | 3270 | 3270 |
| Ground Clearance (unladen) | 234 | 234 | 234 | 234 | 234 | 272 |
| Wading Depth ¹³ | 800 | 800 | 800 | 800 | 800 | 850 |
| Approach Angle (unladen, degrees) | 30 | 30 | 30 | 30 | 30 | 32 |
| Departure Angle (unladen, degrees) ¹⁴ | 23 | 23 | 23 | 23 | 23 | 25 |
| Ramp Breakover Angle (degrees) | 21 | 21 | 21 | 21 | 21 | 24 |

S = Standard **O** = Factory Option that can be ordered before a vehicle is manufactured at an additional cost

P = Part of a Pack that can be ordered before a vehicle is manufactured at an additional cost **A** = Accessory fitted at Ford Dealer at an additional cost

Disclaimer:

1. 98RON fuel is required to achieve the kW and Nm numbers stated. 2. Driver-assist features are supplemental and do not replace the driver's attention, judgment and need to control the vehicle. May not operate at certain speeds, or in certain driving, road or weather conditions. See Owner's Manual for more information. 3. Mud/Rut Mode intended for off-road use only. 4. Sand Mode intended for off-road use only. 5. Baja Mode intended for off-road use only. 6. Rock Crawl Mode intended for off-road use only. 7. Fuel consumption and emissions as per ADR 81/02 (combined cycle) and to be used for vehicle comparison purposes only. It is unlikely that these fuel consumption and emissions figures will be achieved in real world driving conditions. Actual fuel consumption and emissions will depend on many factors including the driver's habits, prevailing conditions and the vehicle's equipment, options and accessories, condition and use. 8. With Delete Auto Stop/Start System option selected. 9. Subject to State and Territory regulations. Kerb Weight includes the vehicle with a full tank of fuel, without occupants, luggage or cargo and with the heaviest possible combination of factory fitted optional equipment included. Minimum Kerb Weight includes the vehicle with a full tank of fuel, without occupants, luggage or cargo and with the lightest possible orderable combination of factory fit equipment. Tare Weight includes the vehicle with 10L of fuel, without occupants, luggage or cargo and with the heaviest possible combination of factory fitted optional equipment included. All payloads are calculated by deducting either the vehicle's Kerb Weight, Minimum Kerb Weight or Tare Weight from its Gross Vehicle Mass (GVM). Payload (based on Kerb Weight) is the maximum combined value of occupants, cargo, added accessories, added structures and tow ball download (when towing). Ranger Raptor payload is calculated by deducting the vehicle's Tare Weight from its Gross Vehicle Mass (GVM). All Chassis Cab payloads, kerb and tare weights exclude weights of tray bodies. Vehicle weights are approximate and subject to individual variances. Vehicles should be weighed before and after adding additional load, accessories or towing a trailer to ensure the maximum Gross Vehicle Mass (GVM), Gross Combined Mass (GCM) and Gross Axle Weight Ratings are not exceeded. 10. Optional 20" Alloy Wheels with All Season Tyres have a Rear Gross Axle Weight Rating of 1,900kg, a reduction of 59kg. 11. Vehicle dimensions are approximate and subject to individual vehicle variances, and should be confirmed before fitting any accessories or otherwise relying on this value. All Pick-up box dimensions take into account the Drop-In or Spray-In Bedliner where standard. 12. Vehicle length measured from front license plate bracket. 13. 800mm Water Wading achieved when maintaining a steady speed of 7 km/h. 14. Inclusive of tow bar where standard.

4x4 | Sport, Wildtrak, Platinum, Raptor Ranger 2024.50MY Specifications

| Turning Circle (meters) | 12.9 | 12.9 | 12.9 | 12.9 | 12.9 | 13.2 |
|--|------------------------|------------------------|------------------------|------------------------|------------------------|-----------------------------|
| | Sport | Sport | Wildtrak | Wildtrak | Platinum | Raptor |
| | 4x4 Double Cab Pick-up | 4x4 Double Cab Pick-up | 4x4 Double Cab Pick-up | 4x4 Double Cab Pick-up | 4x4 Double Cab Pick-up | 4x4 Double Cab Pick-up |
| Engine | 2.0L Bi -Turbo | 3.0L V6 Turbo-Diesel | 2.0L Bi -Turbo | 3.0L V6 Turbo-Diesel | 3.0L V6 Turbo-Diesel | 3.0L V6 Twin-Turbo EcoBoost |
| Interior Dimensions¹⁵ (mm) | | | | | | |
| 2nd Row Headroom | 989 | 989 | 989 | 989 | 989 | 989 |
| 2nd Row Legroom | 879 | 879 | 879 | 879 | 879 | 879 |
| 2nd Row Shoulder Room | 1440 | 1440 | 1440 | 1440 | 1440 | 1440 |
| Front Headroom | 1024 | 1024 | 1024 | 1024 | 1024 | 1024 |
| Front Legroom | 1057 | 1057 | 1057 | 1057 | 1057 | 1057 |
| Front Shoulder Room | 1450 | 1450 | 1450 | 1450 | 1450 | 1450 |
| Chassis & Suspension | | | | | | |
| Front Disc / Rear Drum brakes | – | – | – | – | – | – |
| Heavy Duty Suspension | – | – | – | – | – | – |
| Front and rear vented discs with electronic Brake Booster | S | S | S | S | S | S |
| Electrical Power Assisted Steering | S | S | S | S | S | S |
| Locking Rear Differential | S | S | S | S | S | S |
| Wheels | | | | | | |
| 16" Steel with All Season Tyres | – | – | – | – | – | – |
| 16" Alloy with All Season Tyres | – | – | – | – | – | – |
| 17" Alloy with All Season Tyres | – | – | – | – | – | – |
| LT285/70R17 BF Goodrich KO2 High Performance All Terrain tyres | – | – | – | – | – | S |
| 18" Alloy with All Season Tyres | S | S | – | – | – | – |
| 18" Alloy with All Terrain Tyres | – | – | S | S | – | – |
| 20" Alloy with All Season Tyres | – | – | – | – | S | – |
| Spare Wheel - 16" Steel | – | – | – | – | – | – |
| Spare Wheel - 17" Steel | – | – | – | – | – | – |
| Spare Wheel - 17" Alloy | – | – | – | – | – | S |
| Spare Wheel - 18" Alloy | S | S | S | S | – | – |
| Spare Wheel - 20" Alloy | – | – | – | – | S | – |
| Exterior Lighting | | | | | | |
| Headlamps - Halogen | – | – | – | – | – | – |
| Headlamps - LED | S | S | S | S | – | – |
| Headlamps - Matrix LED with Auto Leveling & Dynamic Bending | – | – | P | P | S | S |
| Daytime Running Lamps - Halogen | – | – | – | – | – | – |
| Daytime Running Lamps - LED | S | S | S | S | S | S |
| Front Fog Lamps - Halogen | – | – | – | – | – | – |
| Front Fog Lamps - LED | S | S | S | S | S | S |
| Taillamps - Halogen | – | – | – | – | – | – |
| Taillamps - LED | S | S | S | S | S | S |
| Tailgate Mounted Stop Light | S | S | S | S | S | S |
| Zone Lighting ¹⁶ | P | P | S | S | S | S |

4x4 | Sport, Wildtrak, Platinum, Raptor Ranger 2024.50MY Specifications

| | Sport | Sport | Wildtrak | Wildtrak | Platinum | Raptor |
|--|------------------------|------------------------|------------------------|------------------------|------------------------|-----------------------------|
| | 4x4 Double Cab Pick-up | 4x4 Double Cab Pick-up | 4x4 Double Cab Pick-up | 4x4 Double Cab Pick-up | 4x4 Double Cab Pick-up | 4x4 Double Cab Pick-up |
| Engine | 2.0L Bi -Turbo | 3.0L V6 Turbo-Diesel | 2.0L Bi -Turbo | 3.0L V6 Turbo-Diesel | 3.0L V6 Turbo-Diesel | 3.0L V6 Twin-Turbo EcoBoost |
| Exterior | | | | | | |
| Exterior Mirrors - Power Adjustable | S | S | S | S | S | S |
| Exterior Mirrors - Power Folding | S | S | S | S | S | S |
| Exterior Mirrors - Puddle Lamps | P | P | S | S | S | S |
| Black-Painted Roof | – | – | – | – | S | – |
| Steel Underbody Protection | S | S | S | S | S | S |
| Side Steps | S | S | S | S | S | S |
| Rear Box Step | S | S | S | S | S | – |
| Roof Rails | – | – | S | S | – | – |
| Roof Rails with folding roof racks | – | – | – | – | S | – |
| Sports Bar ¹⁷ | S | S | – | – | – | – |
| Sports Hoop/Sailplane ¹⁷ | – | – | S | S | – | – |
| Load Box Elements | | | | | | |
| Flexible Rack System ¹⁸ | O | O | O | O | S | – |
| Tailgate Ruler | – | – | – | – | – | S |
| Drop In Bedliner (without Tailgate Ruler) ¹⁷ | S | S | S | S | S | – |
| Tough Bed™ Spray-In Bedliner (incl. Tailgate Ruler) | – | – | – | – | – | S |
| 12V Socket in Bedliner | S | S | S | S | S | S |
| Box Top Protective Capping with Load Box Access Caps ¹⁷ | S | S | – | – | – | S ¹⁸ |
| Aluminum Tie Down Rails ¹⁷ | – | – | S | S | – | – |
| Inner Tie Downs | S | S | S | S | S | S |
| Cargo Management System | P | P | S | S | S | – |
| Load Rest ¹⁷ | – | – | – | – | – | – |
| Load Box Illumination | S | S | S | S | S | S |
| Tailgate Cargo Clamps | S | S | S | S | S | S |
| Tailgate Cupholders | S | S | S | S | S | S |
| Power Tailgate Lock | S | S | S | S | S | S |
| Tailgate with Lift Assistance | S | S | S | S | – | S |
| Damped Tailgate with Lift Assistance | – | – | – | – | S | – |
| Power Roller Shutter ^{17,20} | – | – | S | S | S | O |

S = Standard **O** = Factory Option that can be ordered before a vehicle is manufactured at an additional cost

P = Part of a Pack that can be ordered before a vehicle is manufactured at an additional cost **A** = Accessory fitted at Ford Dealer at an additional cost

Disclaimer:

15. Vehicle dimensions are approximate and subject to individual vehicle variances, and should be confirmed before fitting any accessories or otherwise relying on this value. All Pick-up box dimensions take into account the Drop-In or Spray-In Bedliner where standard. **16.** Zone Lighting will not operate if battery charge is insufficient. The length of time that Zone Lighting will operate depends on the battery charge, the types of lights fitted to the vehicle (LED or Bulb) and other electrical loads connected to the vehicle. The system will automatically turn off after a period of time to preserve the battery's engine starting performance.

17. Load Rest (XL/XLS), Sports Bar (XLT/Sport), Sports Hoop/Sailplane, Aluminum Tie Down Rails and Power Roller Shutter (Wildtrak) and Box Top Protective Capping with Load Box Access Caps not available when Canopy option selected. Load Rest (XL/XLS) not included when Manual Roller Shutter option selected. Drop In Bedliner may be trimmed to accommodate mounting brackets. **18.** Flexible Rack System has a maximum load limit 80kg (dynamic) and 250kg (static). Manual set-up required. Removal of antenna mast recommended when cargo positioned over antenna. Removal may affect availability of radio, satellite and connected services. **19.** Load Box Access Caps not included when Power Roller Shutter option selected on Raptor. **20.** Drop-in bedliner in lieu of spray-in bedliner and Load Box Access Caps not included when Power Roller Shutter option selected on Raptor.

4x4 | Sport, Wildtrak, Platinum, Raptor Ranger 2024.50MY Specifications

| | Sport | Sport | Wildtrak | Wildtrak | Platinum | Raptor |
|--|------------------------|------------------------|------------------------|------------------------|------------------------|-----------------------------|
| | 4x4 Double Cab Pick-up | 4x4 Double Cab Pick-up | 4x4 Double Cab Pick-up | 4x4 Double Cab Pick-up | 4x4 Double Cab Pick-up | 4x4 Double Cab Pick-up |
| Engine | 2.0L Bi -Turbo | 3.0L V6 Turbo-Diesel | 2.0L Bi -Turbo | 3.0L V6 Turbo-Diesel | 3.0L V6 Turbo-Diesel | 3.0L V6 Twin-Turbo EcoBoost |
| Interior, Seating and Door Trim | | | | | | |
| Leather Wrapped Steering Wheel & Gear Knob | S | S | S | S | S | S |
| Heated Steering Wheel | - | - | - | - | S | - |
| Steering Wheel Reach & Height Adjust | S | S | S | S | S | S |
| Electric Parking Brake | S | S | S | S | S | S |
| e-Shifter | S | S | S | S | S | S |
| Seating Capacity | 5 | 5 | 5 | 5 | 5 | 5 |
| Heated Seats - Front Driver & Passenger | - | - | S | S | - | S |
| Heated & Ventilated Seats - Front Driver & Passenger | - | - | - | - | S | - |
| Seat Material - Cloth | - | - | - | - | - | - |
| Seat Material - Premium Cloth | - | - | - | - | - | - |
| Seat Material -Leather Accented (excluding 2nd row middle seat) ²¹ | S | S | S | S | - | S |
| Seat Material - Leather Accented (excluding 2nd row middle seat) Quilted ²¹ | - | - | - | - | S | - |
| Driver Seat - 8-Way Manual | - | - | - | - | - | - |
| Driver Seat - 8-Way Power | S | S | S | S | - | - |
| Driver Seat - 10-Way Power | - | - | - | - | - | S |
| Driver Seat - 10-Way Power with Memory Setting | - | - | - | - | S | - |
| Front Passenger Seat - 4-Way Manual | - | - | - | - | - | - |
| Front Passenger Seat - 6-Way Manual | S | S | - | - | - | - |
| Front Passenger Seat - 8-Way Power | - | - | S | S | - | - |
| Front Passenger Seat - 10-Way Power | - | - | - | - | S | S |
| Child Seat Upper Anchorage Points (x 2) | S | S | S | S | S | S |
| Child Seat ISOFIX Anchorage Points (x 2) | S | S | S | S | S | S |
| Floor Covering - Vinyl | - | - | - | - | - | - |
| Floor Covering - Carpet | S | S | S | S | S | S |
| Floor Mats - Driver | - | - | - | - | - | - |
| Floor Mats - Driver & Front Passenger | S | S | S | S | S | S |
| Floor Mats - Rear | - | - | - | - | S | - |
| Comfort and Convenience | | | | | | |
| Ambient Lighting | - | - | S | S | S | S |
| Auxiliary Switch Bank | P | P | P | P | S | S |
| Centre Console with Single Lid and 2 Cup Holders | S | S | S | S | S | S |
| Instrument Panel Cup Holders | - | - | S | S | S | S |

4x4 | Sport, Wildtrak, Platinum, Raptor Ranger 2024.50MY Specifications

| | Sport | Sport | Wildtrak | Wildtrak | Platinum | Raptor |
|---|------------------------|------------------------|------------------------|------------------------|------------------------|-----------------------------|
| | 4x4 Double Cab Pick-up | 4x4 Double Cab Pick-up | 4x4 Double Cab Pick-up | 4x4 Double Cab Pick-up | 4x4 Double Cab Pick-up | 4x4 Double Cab Pick-up |
| Engine | 2.0L Bi -Turbo | 3.0L V6 Turbo-Diesel | 2.0L Bi -Turbo | 3.0L V6 Turbo-Diesel | 3.0L V6 Turbo-Diesel | 3.0L V6 Twin-Turbo EcoBoost |
| Comfort and Convenience continues | | | | | | |
| Charging | | | | | | |
| - Auxiliary 12V Power Outlet - Centre Console Bin | S | S | S | S | S | S |
| - Auxiliary 12V Power Outlet - Rear of Centre Console | S | S | - | - | - | - |
| - USB Ports | 3 | 3 | 5 | 5 | 5 | 5 |
| - Wireless Charging ²² | S | S | S | S | S | S |
| - 12V Socket in Bedliner | S | S | S | S | S | S |
| Climate Control - Single-Zone Manual | - | - | - | - | - | - |
| Climate Control - Dual-Zone | S | S | S | S | S | S |
| Rear Air Vent Registers | S | S | S | S | S | S |
| Auto Headlamp On-Off | S | S | S | S | S | S |
| Auto High Beam | - | - | P | P | S | S |
| Front Power Windows | S | S | S | S | S | S |
| Rear Power Windows | S | S | S | S | S | S |
| Privacy Glass | S | S | S | S | S | S |
| Rain Sensing Windscreen Wipers | S | S | S | S | S | S |
| Rear Window Defrost | S | S | S | S | S | S |
| Electrochromatic Rear View Mirror | S | S | S | S | S | S |
| Underseat Stowage | S | S | S | S | S | S |

S = Standard **O** = Factory Option that can be ordered before a vehicle is manufactured at an additional cost

P = Part of a Pack that can be ordered before a vehicle is manufactured at an additional cost **A** = Accessory fitted at Ford Dealer at an additional cost

Disclaimer:

²¹. Leather accented refers to seats with a combination of real and artificial leather. No leather in 2nd row middle seat. ²². Wireless Charging only available with compatible phones.

4x4 | Sport, Wildtrak, Platinum, Raptor Ranger 2024.50MY Specifications

| | Sport | Sport | Wildtrak | Wildtrak | Platinum | Raptor |
|--|------------------------|------------------------|------------------------|------------------------|------------------------|-----------------------------|
| | 4x4 Double Cab Pick-up | 4x4 Double Cab Pick-up | 4x4 Double Cab Pick-up | 4x4 Double Cab Pick-up | 4x4 Double Cab Pick-up | 4x4 Double Cab Pick-up |
| Engine | 2.0L Bi -Turbo | 3.0L V6 Turbo-Diesel | 2.0L Bi -Turbo | 3.0L V6 Turbo-Diesel | 3.0L V6 Turbo-Diesel | 3.0L V6 Twin-Turbo EcoBoost |
| Audio and Communication | | | | | | |
| Embedded Modem | S | S | S | S | S | S |
| FordPass Connect ²³ | S | S | S | S | S | S |
| Colour Digital Instrument Cluster with Configurable Display - 8-inch | S | S | S | S | – | – |
| Colour Digital Instrument Cluster with Configurable Display - 12.4-inch | – | – | – | – | S | S |
| Colour Multi-Function Touch Screen Display - 10.1-inch | S | S | – | – | – | – |
| Colour Multi-Function Touch Screen Display - 12-inch | – | – | S | S | S | S |
| Speakers | 6 | 6 | 6 | 6 | 10 | 10 |
| B&O Premium Audio System (10 Speakers) ²⁴ | – | – | P | P | S | S |
| Digital Audio (DAB+) | S | S | S | S | S | S |
| Bluetooth® with Phone/Audio Streaming ²⁵ | S | S | S | S | S | S |
| Built-In Satellite Navigation with 1 year of Connected Navigation Services included ²⁶ | S | S | S | S | S | S |
| SYNC®4A ²⁷ | – | – | – | – | – | – |
| SYNC®4A with Voice-Activated Controls ²⁷ | S | S | S | S | S | S |
| Steering Wheel Audio/Function Control | S | S | S | S | S | S |
| Wireless Apple CarPlay™ & Android Auto™ ²⁸ | S | S | S | S | S | S |
| Safety and Security | | | | | | |
| Perimeter Alarm System | S | S | S | S | S | S |
| Airbags x 9 - Front, Side, Knee & Full Length Curtain (Driver & Passenger) & Far Side Driver Front Airbag | S | S | S | S | S | S |
| 3 Point Lap Sash Seat Belt - All Positions | S | S | S | S | S | S |
| Child Proof Rear Door Locks | S | S | S | S | S | S |
| Emergency Assistance ²⁹ | S | S | S | S | S | S |
| Power Door Locks | S | S | S | S | S | S |
| Smart Keyless Entry with Push Button Start | S | S | S | S | S | S |
| Driver Assistance | | | | | | |
| Active Park Assist 2.0 ³⁰ | – | – | S | S | S | S |
| Adaptive Cruise Control ³⁰ | – | – | – | – | – | – |
| Intelligent Adaptive Cruise Control with Stop & Go, Traffic Sign Recognition and Lane Centring ³¹ | S | S | S | S | S | S |
| Intelligent Speed Assist ³² | S | S | S | S | S | S |
| Blind Spot Monitoring with Cross Traffic Alert ³⁰ | – | – | – | – | – | – |
| Blind Spot Monitoring with Cross Traffic Alert and Trailer Coverage ³³ | S | S | S | S | S | S |

4x4 | Sport, Wildtrak, Platinum, Raptor Ranger 2024.50MY Specifications

| | Sport | Sport | Wildtrak | Wildtrak | Platinum | Raptor |
|--|------------------------|------------------------|------------------------|------------------------|------------------------|-----------------------------|
| | 4x4 Double Cab Pick-up | 4x4 Double Cab Pick-up | 4x4 Double Cab Pick-up | 4x4 Double Cab Pick-up | 4x4 Double Cab Pick-up | 4x4 Double Cab Pick-up |
| Engine | 2.0L Bi -Turbo | 3.0L V6 Turbo-Diesel | 2.0L Bi -Turbo | 3.0L V6 Turbo-Diesel | 3.0L V6 Turbo-Diesel | 3.0L V6 Twin-Turbo EcoBoost |
| Driver Assistance continues | | | | | | |
| Dynamic Stability Control (DSC) incorporating ABS, Electronic Brakeforce Distribution, Emergency Brake Assist, Hill Start Assist, Load Adaptive Control, Roll Over Mitigation, Traction Control & Trailer Sway Control ³⁰ | S | S | S | S | S | S |
| Evasive Steer Assist ³⁰ | S | S | S | S | S | S |
| Lane Keeping Aid with Road Edge Detection and Driver Alert System ³⁴ | S | S | S | S | S | S |

S = Standard **O** = Factory Option that can be ordered before a vehicle is manufactured at an additional cost

P = Part of a Pack that can be ordered before a vehicle is manufactured at an additional cost **A** = Accessory fitted at Ford Dealer at an additional cost

Disclaimer:

23. Use of FordPass is subject to the FordPass Terms and Privacy Policy available on ford.com.au/fordpass and requires a compatible mobile device, internet access and software (including software updates from time to time). FordPass functionality and appearance may change over time due to software updates. You are responsible for internet access, mobile network data and voice call services required for your use of the FordPass App on your mobile device, including associated fees. The FordPass App and FordPass Connect modem can only work when both are connected to the telecommunications network. The FordPass Connect modem will only function on the 3G or 4G telecommunications networks. When these networks are no longer available, the modem will stop functioning and the connected services and all data transmission via the modem will cease. Ford cannot guarantee that FordPass will be in fully operating condition at all times and the FordPass App may be unavailable or particular FordPass services interrupted. Ford is not responsible for any limitations or restrictions of the telecommunications network or of your mobile device. Warning: Local laws prohibit some phone functions while driving. Check your local road rules before using these functions. Use Remote Vehicle Start and Stop responsibly and only in well ventilated areas where you are aware of your vehicle's surroundings. **24.** BANG & OLUFSEN© 2024 and B&O© 2024. BANG & OLUFSEN™ and B&O™ are registered trademarks of Bang & Olufsen Group. Licensed by Harman Becker Automotive System Manufacturing Kft. All rights reserved. **25.** Bluetooth® is a registered trademark of Bluetooth SIG, Inc. and is under license. Some phones not compatible. **26.** Eligible vehicles receive Connected Navigation Services for 1 year from the Ford Express New Vehicle Warranty start date, after which time the Connected Navigation Services may cease to be available, or may be subject to a subscription fee. To use Connected Navigation Services, users must have created a FordPass App account (terms apply), have fully activated the vehicle's FordPass Connect modem and have SYNC Location set to 'on'. **27.** Don't drive distracted. Use voice operated systems where possible and don't use handheld devices while driving. Some features may be locked out while the vehicle is in gear. Not all SYNC features are compatible with all phones. SYNC screen appearance and functionality may change over time due to software updates. **28.** Apple CarPlay / Android Auto requires phone with compatible version of Apple iOS / Android™ (as applicable), active data service, and connection cable (sold separately). SYNC® does not control Apple CarPlay / Android Auto while in use. Apple / Google and other third parties are responsible for their respective functionality. Message and data rates may apply. Apple CarPlay, Siri Eyes Free, iPod and iPhone are trademarks of Apple Inc. registered in the US and other countries. Android Auto and Google Maps are trademarks of Google Inc. Ford Applink® is available on selected SYNC® models and is compatible with select smartphone platforms. Warning: Local laws prohibit some phone functions while driving. Check your local road rules before using these functions. **29.** Emergency Assistance feature needs a paired and in range mobile phone. Can activate in the event of a crash which deploys an airbag or activates the fuel pump shut off. **30.** Driver-assist features are supplemental and do not replace the driver's attention, judgment and need to control the vehicle. May not operate at certain speeds, or in certain driving, road or weather conditions. See Owner's Manual for more information. **31.** Driver-assist features are supplemental and do not replace the driver's attention, judgment and need to control the vehicle. May not operate at certain speeds, or in certain driving, road or weather conditions. Intelligent Adaptive Cruise Control (iACC) uses various data to adjust the set speed of the vehicle to the speed limit detected by the system. The iACC system will not always detect the correct speed limit and may set a vehicle speed that is above or below the actual speed limit. If the system does this, it can be overridden by the driver applying the brake or accelerator or via steering wheel controls. In some circumstances, iACC will use map data to set the vehicle speed. Ford recommends keeping map data updated by fully activating the vehicle's FordPass Connect modem and enabling Connected Navigation Services. Connected Navigation Services are included for 1 year from the Ford Express New Vehicle Warranty start date and available ongoing subject to payment of a subscription fee. Adaptive Cruise Control and Lane Centring has a minimum operating speed of 20km/hr. Detection of lower speed limit will result in system entering standby when iACC is active. The Stop and Go functionality of this system operates as low as 0km/hr in traffic jam situations. Lane Centring feature should be disabled via the Driver Assistance menu in SYNC before towing. Customers should read the Owner's Manual for details of the limitations of the iACC system before activating. Speed Sign Recognition will not always detect the correct speed limit and may display a speed that is above or below the actual speed limit. On Ranger models with Satellite Navigation, in some circumstances, Speed Sign Recognition will use map data to display the speed limit on the digital instrument cluster. Ford recommends keeping map data updated by fully activating the vehicle's FordPass Connect modem and enabling Connected Navigation Services. Connected Navigation Services are included for 1 year from the Ford Express New Vehicle Warranty start date and available ongoing subject to payment of a subscription fee. **32.** Driver-assist features are supplemental and do not replace the driver's attention, judgment and need to control the vehicle. May not operate at certain speeds, or in certain driving, road or weather conditions. Intelligent Speed Assist (ISA) uses various data to limit the set speed of the vehicle to the speed limit detected by the system. The ISA system will not always detect the correct speed limit and may limit a vehicle speed above or below the actual speed limit. ISA can be temporarily overridden by the driver firmly pressing the accelerator. Customers should read the Owner's Manual for details of the limitations of the ISA system before activating. On Ranger models with Satellite Navigation, in some circumstances, ISA will use map data to limit the vehicle speed. Ford recommends keeping map data updated by fully activating the vehicle's FordPass Connect modem and enabling Connected Navigation Services. Connected Navigation Services are included for 1 year from the Ford Express New Vehicle Warranty start date and available ongoing subject to payment of a subscription fee. **33.** Driver-assist features are supplemental and do not replace the driver's attention, judgment and need to control the vehicle. May not operate at certain speeds, or in certain driving, road or weather conditions. See Owner's Manual for more information. Trailer Coverage system (requires a genuine factory fit tow bar) supports conventional trailer dimensions: up to 2.4m wide (measured at trailer front) and up to 10m long from the rear of your vehicle. Drivers will need to create a profile of their trailers in SYNC to support this system. **34.** Driver-assist features are supplemental and do not replace the driver's attention, judgment and need to control the vehicle. May not operate at certain speeds, or in certain driving, road or weather conditions. See Owner's Manual for more information. Road Edge Detection designed for use on rural roads at speeds of 65 – 110km/h. The feature does not detect every edge and does require a level of contrast between the road surface and the edge.

4x4 | Sport, Wildtrak, Platinum, Raptor Ranger 2024.50MY Specifications

| | Sport | Sport | Wildtrak | Wildtrak | Platinum | Raptor |
|--|------------------------|------------------------|------------------------|------------------------|------------------------|-----------------------------|
| | 4x4 Double Cab Pick-up | 4x4 Double Cab Pick-up | 4x4 Double Cab Pick-up | 4x4 Double Cab Pick-up | 4x4 Double Cab Pick-up | 4x4 Double Cab Pick-up |
| Engine | 2.0L Bi -Turbo | 3.0L V6 Turbo-Diesel | 2.0L Bi -Turbo | 3.0L V6 Turbo-Diesel | 3.0L V6 Turbo-Diesel | 3.0L V6 Twin-Turbo EcoBoost |
| Driver Assistance continues | | | | | | |
| Post Impact Braking ³⁵ | S | S | S | S | S | S |
| Pre-Collision Assist with Autonomous Emergency Braking (AEB) ³⁶ | S | S | S | S | S | S |
| Reverse Brake Assist ³⁷ | S | S | S | S | S | S |
| Parking Sensors - Front ³⁵ | S | S | S | S | S | S |
| Parking Sensors - Rear ³⁵ | S | S | S | S | S | S |
| Rear View Camera - Analogue ³⁸ | – | – | – | – | – | – |
| Rear View Camera - Integrated Digital ³⁵ | S | S | S | S | S | S |
| 360-Degree Camera ³⁵ | P | P | S | S | S | S |
| Traffic Sign Recognition ³⁹ | S | S | S | S | S | S |
| Tyre Pressure Monitoring System | S | S | S | S | S | S |

Towing

| | | | | | | |
|--|-------|-------|-------|-------|-------|-------|
| Maximum Braked Towing Capacity (kg) ⁴⁰ | 3,500 | 3,500 | 3,500 | 3,500 | 3,500 | 2,500 |
| Pro Trailer Back-up Assist™ ³⁵ | P | P | S | S | S | S |
| Tow Bar with Integrated Trailer Brake Controller ⁴¹ | S | S | S | S | S | S |
| Trailer Light Check ⁴² | S | S | S | S | S | S |
| Towing Vehicle Integration with Towing Checklist | S | S | S | S | S | S |
| Tow Haul Mode (part of Selectable Drive Modes ³⁵) | S | S | S | S | S | – |

Off-Road

| | | | | | | |
|------------------------------------|---|---|---|---|---|---|
| Off-Road Screen ³⁵ | S | S | S | S | S | S |
| Hill Descent Control ³⁵ | S | S | S | S | S | S |
| Locking Rear Differential | S | S | S | S | S | S |
| Front Recovery Hook | 2 | 2 | 2 | 2 | 2 | 2 |
| Rear Recovery Hook | – | – | – | – | – | 2 |

Ford Factory Fitted Options

| | | | | | | |
|---|-----|---|-----|---|---|---|
| Delete Auto Stop/Start System | NCO | – | NCO | – | – | – |
| Manual Roller Shutter ⁴³ | O | O | – | – | – | – |
| Commercial Canopy ⁴⁴ | O | O | O | O | – | – |
| Flexible Rack System ⁴⁵ | O | O | O | O | S | – |
| Stylish Canopy (Lift and Slide) ⁴⁴ | O | O | O | O | – | – |
| Stylish Canopy (Dual Lift) ⁴⁴ | O | O | O | O | – | – |
| 18" Alloy Wheels with All Terrain Tyres with 18" Alloy Spare Wheel | O | O | – | – | – | – |
| 20" Alloy Wheels with All Season Tyres with 20" Alloy Spare Wheel ⁴⁶ | – | – | O | O | – | – |
| Prestige Paint | O | O | O | O | O | O |
| Power Roller Shutter ⁴⁹ | – | – | S | S | S | O |

4x4 | Sport, Wildtrak, Platinum, Raptor Ranger 2024.50MY Specifications

| | Sport | Sport | Wildtrak | Wildtrak | Platinum | Raptor |
|--------|------------------------|------------------------|------------------------|------------------------|------------------------|-----------------------------|
| | 4x4 Double Cab Pick-up | 4x4 Double Cab Pick-up | 4x4 Double Cab Pick-up | 4x4 Double Cab Pick-up | 4x4 Double Cab Pick-up | 4x4 Double Cab Pick-up |
| Engine | 2.0L Bi -Turbo | 3.0L V6 Turbo-Diesel | 2.0L Bi -Turbo | 3.0L V6 Turbo-Diesel | 3.0L V6 Turbo-Diesel | 3.0L V6 Twin-Turbo EcoBoost |

Ford Factory Fitted Options continues

| | | | | | | |
|---|---|---|---|---|-----|---|
| Delete Black-Painted Roof | – | – | – | – | NCO | – |
| Touring Pack - Cargo Management System, Auxiliary Switch Bank, 360 Camera, ³⁵ Puddle Lamps & Zone Lighting ⁴⁷ Pro Trailer Back-up Assist™ ³⁵ | O | O | – | – | – | – |
| Wildtrak Premium Pack - Auxiliary Switch Bank, Matrix LED Headlamps & Taillamps & B&O Premium Audio System ⁴⁸ | – | – | O | O | – | – |

S = Standard O = Factory Option that can be ordered before a vehicle is manufactured at an additional cost

P = Part of a Pack that can be ordered before a vehicle is manufactured at an additional cost A = Accessory fitted at Ford Dealer at an additional cost

NCO = No Cost Option that can be ordered before a vehicle is manufactured at no cost

Disclaimer:

35. Driver- assist features are supplemental and do not replace the driver's attention, judgment and need to control the vehicle. May not operate at certain speeds, or in certain driving, road or weather conditions. See Owner's Manual for more information. **36.** Driver-assist features are supplemental and do not replace the driver's attention, judgment and need to control the vehicle. May not operate at certain speeds, or in certain driving, road or weather conditions. See Owner's Manual for more information. Pre-collision Assist with Automatic Emergency Braking detects pedestrians, but not in all conditions, and can help avoid or reduce a collision. It does not replace safe driving. See Owner's Manual for Limitations. **37.** Driver-assist features are supplemental and do not replace the driver's attention, judgement and need to control the vehicle. May not operate at certain speeds, or in certain driving, road or weather conditions. Please see Owner's Manual for more information. Reverse Brake Assist functions when in reverse and travelling at a speed of 2-12 km/h. **38.** Analogue Rear View Camera is provided and will need to be fitted to the vehicle by a body builder. Driver-assist features are supplemental and do not replace the driver's attention, judgment and need to control the vehicle. May not operate at certain speeds, or in certain driving, road or weather conditions. See Owner's Manual for more information. **39.** Driver-assist features are supplemental and do not replace the driver's attention, judgment and need to control the vehicle. May not operate at certain speeds, or in certain driving, road or weather conditions. See Owner's Manual for more information. Speed Sign Recognition will not always detect the correct speed limit and may display a speed that is above or below the actual speed limit. On Ranger models with Satellite Navigation, in some circumstances Speed Sign Recognition will use map data to display the speed limit on the digital instrument cluster. Ford recommends keeping map data updated by fully activating the vehicle's FordPass Connect modem and enabling Connected Navigation Services. Connected Navigation Services are included for 1 year from the Ford Express New Vehicle Warranty start date and available ongoing subject to payment of a subscription fee. **40.** Maximum towing capacity-braked using a Genuine Ford tow pack. Subject to State and Territory regulations. To comply with these limits, occupants and / or luggage may need to be restricted to not exceed the GCM and GVM limits. For further details regarding passenger and luggage restrictions, please consult your authorised Ford Dealer and / or refer to the Owner's Manual. **41.** Drivers will need to create a profile of their trailers in SYNC to support the Trailer Brake Controller and must set the gain on the Brake Controller unit. **42.** Trailer Light Check requires a Genuine Ford Tow Bar to be fitted and can be used via SYNC, or via FordPass app as a Connected Service. Where used via the app as a Connected Service, eligible vehicles receive 1 year of service from the Ford Express New Vehicle Warranty start date after which time, the Connected Service may cease to be available, or may be subject to a subscription fee. Users must have created a FordPass App account (terms apply) and have fully activated the vehicle's FordPass Connect modem to use this feature via the app. **43.** Load Rest (XL/XLS) not included when Manual Roller Shutter option selected. Drop In Bedliner may be trimmed to accommodate mounting brackets. **44.** Load Rest (XL/XLS), Sports Bar (XLT/Sport), Sports Hoop/Sailplane, Aluminum Tie Down Rails and Power Roller Shutter (Wildtrak) and Box Top Protective Capping with Load Box Access Caps not available when Canopy option selected. Drop In Bedliner may be trimmed to accommodate mounting brackets. **45.** Flexible Rack System has a maximum load limit 80kg (dynamic) and 250kg (static). Manual set-up required. Removal of antenna mast recommended when cargo positioned over antenna. Removal may affect availability of radio, satellite and connected services. **46.** Optional 20" Alloy Wheels with All Season Tyres have a Rear Gross Axle Weight Rating of 1,900kg, a reduction of 59kg. Vehicle weights are approximate and subject to individual variances. Vehicles should be weighed before and after adding additional load, accessories or towing a trailer to ensure the maximum Gross Axle Weight Ratings are not exceeded. **47.** Zone Lighting will not operate if battery charge is insufficient. The length of time that Zone Lighting will operate depends on the battery charge, the types of lights fitted to the vehicle (LED or Bulb) and other electrical loads connected to the vehicle. The system will automatically turn off after a period of time to preserve the battery's engine starting performance. **48.** BANG & OLUFSEN© 2024 and B&O© 2024. BANG & OLUFSEN™ and B&O™ are registered trademarks of Bang & Olufsen Group. Licensed by Harman Becker Automotive System Manufacturing Kft. All rights reserved. **49.** Drop-in bedliner in lieu of spray-in bedliner and Load Box Access Caps not included when Power Roller Shutter option selected on Raptor.