

i30 N Series II





Born in Namyang. Honed at Nürburgring.

In 2017, the award-winning i30 N marked the premiere of the new Hyundai N high-performance range. Today, we are proud to present you with the next generation: the new i30 N and new i30 Fastback N. Together with i20 N and KONA N, they join an impressive range of high-performance vehicles that are joyfully fun to drive, delivering both everyday usability and race track capable performance.

N stands for Namyang, home of our global Research & Development centre. Born in Namyang and honed at the legendary Nürburgring, one of the most demanding racetracks in the world – the N logo also symbolises a racetrack's chicane curve. Hyundai N cars are designed to perform – and to put a grin on your face. Engineered to satisfy drivers who want to feel the burst of adrenaline that gets your heart beating faster – the pure joy of driving.

Shift the moment.

Created for maximum driving fun, the i30 N Series II has been upgraded with more performance, fresh new design features and the latest smart tech. Balancing exquisite power and racetrack-ready driving dynamics with comfort-oriented daily commuting – it truly is a race car for every day. And now, depending on how you like to control your thrills, you can choose from a 6-speed manual transmission or the new N DCT eight-speed wet dual clutch transmission with paddle shifters for more control and faster shifts.





The fresh new look of performance.

Heads will turn – and not just because of the sound. The i30 N Series II's enhanced design elements and updated styling reflect its performance credentials. Every design feature has been developed with focus on dynamic performance. Born of the track and looking every bit the part, the new i30 N has been reimagined with design updates focussed on dynamic performance. More than just a styling exercise, performance has driven changes like the new, aggressive-looking front bumper and air intake design with enhanced aerodynamic side fins. They incorporate air curtains that significantly improve airflow and reduce turbulence into the wheel housing.



Designed to thrill.

The i30 N Series II makes a powerful statement from every angle. The aggressively sculpted new rear bumper features a racing red character line and integrated fog lights above the new oversized exhaust pipes for a sporty and powerful look. The redesigned rear lamps feature a new LED light signature. The rear spoiler with its integrated triangular brake light helps increase downforce to give you more grip through high-speed corners – minimising lift and maximising fun.



Hyundai's first-ever 19" forged alloy wheels improve handling and traction through a reduction in unsprung weight. They are paired with high-performance Pirelli P-Zero tyres.



Go big or go home. We've enlarged the dual single exhaust pipes to enhance the high-performance look of the new i30 N Series II.

Next level performance.

Since the premiere of the award-winning i30 N, we've been working hard to make a great thing even better. Driven by lessons learned in our highly successful i30 N TCR race package and motivated by feedback from our enthusiast community, major performance enhancements are now on board. Featuring lightning fast shifts and excellent power transmission, the new N DCT 8-speed wet dual-clutch transmission delivers excellent acceleration, taking you from 80-120 km/h in 3.3 seconds. That's 2.1 seconds faster than the manual transmission. As with its predecessor, the i30 N Series II features an Electronic Controlled Suspension. The suspension and steering systems have been retuned, resulting in improved ride and handling performance for both transmission types. For maximum performance, the 2.0 T-GDI engine now delivers 206 kW and a substantial increase in flat power for more torque and power at lower RPMs. This ensures high responsiveness, improved acceleration and much more fun with max. torque of 392 Nm and 250 km/h top speed.





The shift to more fun.

When it comes to making fast, smooth and efficient shifts, you have two performance enhancing choices. There's the standard smooth-shifting 6-speed close-ratio manual transmission with a carbon synchronizer ring and strong clutch. Short shift travel helps with fast shifting and sporty response. Or the quick-shifting 8-speed wet dual-clutch transmission N DCT. It is a wet type transmission, meaning that oil is used to cool the clutch components, which creates less friction and allows a higher amount of torque to be transferred through the gearbox. Designed to provide the engaging experience of a manual with the convenience of an automatic, the N DCT also lets you select gears manually with the shift lever or the steering wheel mounted paddle shifters for more racecar feeling in everyday life. And when you feel like using the gear lever to shift, you'll love the motorsport shifting logic born of our TCR racing experience: to downshift, push forward, and to upshift, pull back. What's more, the N DCT enables three new N performance functions for even more driving fun: N Grin Shift, N Power Shift and N Track Sense Shift.



New features More fun.

When equipped with the N DCT you get the added thrill of three new N performance functions for even more driving fun: N Grin Shift, N Power Shift and N Track Sense Shift.

N Grin Shift.

Sure to bring a grin to your face – unleash full N performance for 20 seconds with the push of the dedicated N Grin Shift button on the steering wheel. Enjoy maximum torque and acceleration, maximum exhaust sound and a push feel when upshifting. It temporarily changes the shifting map logic, down shifting to the lowest possible gear for the longest possible time for max RPMs. A countdown on the cluster shows you the remaining seconds for the boost.

N Power Shift.

Enjoy enhanced driving thrills and fun to drive factor with a powerful “push feel” when upshifting. Engages at acceleration with more than 90% throttle, mitigating any reduction in torque by using upshifts to deliver maximum power to the wheels.

N Track Sense Shift.

Senses how you’re driving and activates when it knows you’re driving on a track. It then selects the right gear for optimal performance so you can focus on steering – just like a professional racecar driver. The car senses the track and selects the correct gear for the turn while still braking then it’s ready for the instant acceleration from the exit.

King of the corners.

On the road or on the track, the i30 N Series II is as hungry for corners as you are – and this corner rascal is equipped with an impressive array of high-performance components that provide world-class cornering ability. Like the direct and highly precise rack-mounted motor-driven power steering. Or the N Corner Carving Differential which has been specifically designed and engineered to provide a unique carving feel through even the most challenging corners. It enhances your grip, delivering maximum power to the road while increasing the maximum cornering speed and driving fun. The i30 N comes equipped to perform at a track day with a wide range of racetrack features for enhanced performance. Tested in extreme temperatures and extreme locations, there's no need to upgrade anything. On the track, you're supported by technologies that boost the fun factor. Launch Control helps to launch the car from standstill as easy as possible by controlling the engine torque. The Rev Matching feature automatically increases the revs on the engine when shifting so you can enjoy smoother and faster downshifts.



The Performance Driving Data System lets you monitor and improve your driving performance with updated graphics for even more ease of use. See: power, torque, turbo boost, G-force as well as a lap and acceleration timer.





Elegant adrenaline. Reinvented.

A unique statement of style, the i30 N Fastback N Series II has been reimagined with dynamic performance orientated design updates. Featuring the new LED headlamps and grille of its hatchback sibling, as well as all the performance, power and smart tech upgrades – it has also been meticulously engineered for maximum driving fun on the road. Balancing racetrack driving dynamics and blistering power with the possibility of comfort-oriented daily commuting, the i30 N Fastback N is truly a high performance sports car for every day. Confident and perfectly proportioned, this stylish 5-door hot coupe delivers its adrenaline kick with pure elegance.



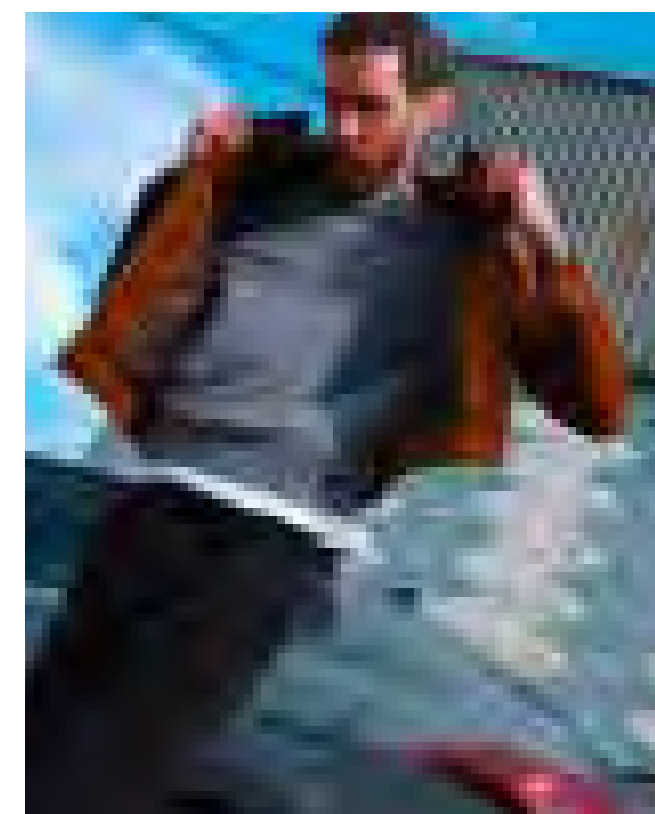
Shaped to stand out.

With its sloping silhouette and gracefully raked roofline, the i30 N Fastback Series II is an elegant beauty. Designed to turn heads – and crush corners – performance has driven changes like the new front bumper, which now features new, larger air intakes designed to improve aerodynamics and reduce turbulence.



The timeless beauty of the fastback.

In the rear, the sophisticated lines of the sloping fastback roofline flow gracefully into the generously arched rear spoiler with its distinctive glossy black accent. Inspired by a drop of water, the C-pillar treatment and rear windscreen are designed with soft, elegant shapes that reinforce the car's tapered belt line. The sculpted rear bumper also features a reflective red character line that arches above the new larger dual single muffler exhaust system for an even sportier, muscular look.





More kicks per hour.

Inside the i30 N Series II everything you need to adjust the power and comfort level is right at your fingertips. From the sound of the exhaust to the stiffness of the suspension, you can select it all – at the push of a button.

Performance cockpit.

The i30 N Series II's sleek and sporty interior is as much about control as it is about comfort. The ergonomics are completely driver-focused – you have everything in view and in reach. The perforated leather N steering wheel puts the paddle shifters for the N DCT and driving performance features right at your fingertips – like for example, the dedicated buttons for N Mode and N Grin Shift. The N Cluster lets you see engine oil temperature, torque, and turbo boost at a glance. The shift timing indicator positioned at the top centre of the cluster indicates when to shift gears for optimal race track driving performance. And the red zone of the variable LED rev-counter changes according to the engine's oil temperature.



N Grin Control System.

Enjoy more smiles per kilometre – At the push of a button, the N Grin Control System gives you the choice of five distinct drive modes to match your mood. The different modes change the character of the car, adjusting the parameters of the engine, the dampers of the Electronically Controlled Suspension, Electronic Stability Control (ESC), N Corner Carving System, engine sound, steering and Rev matching.



The N steering wheel puts all the driving performance features right at your fingertips. Choose your drive mode for more fun at the push of a button. Hit the N Grin Shift button for maximum performance.



Track day? Or just heading to work and driving on your favourite curvy road? Depending on your mood and the road conditions, you can choose between five drive modes: Eco, Normal, Sport, N and N Custom.

The sportier side of comfort.

Created for and by people who truly love cars, the i30 N Series II's sleek and sporty interior embraces and excites. The racing-inspired paddle shifters put fast, effortless gear changes at your fingertips. And because they're mounted on the steering wheel, you can shift more efficiently when cornering. For more comfort and control, you can now sit like a pro with the new optional N Light Seats.. Covered in premium leather and Alcantara® materials, the lightweight, high-performance monoform seats feature an illuminated N logo and pronounced bolsters for excellent lateral support. The sporty character of the interior is further strengthened by the metal pedals and the new silver finish on the air vents. Exclusive Performance Blue contrast stitching can be found throughout the cockpit. These eye-catching accents are applied on the seats, steering wheel, gearshift and front armrest, giving the interior an exclusive edge.



* N Light seats available on indent order and are unavailable with electric adjustment, lumbar support, thigh extension and driver memory seat function.



Stay connected.

Enjoy state-of-the-art smart tech with the 10.25" touchscreen that gives you everything you need, right up on the big screen like: navigation, smartphone mirroring via Apple CarPlay™ and Android Auto™.



10.25" touchscreen.



Wireless charging.



Hyundai SmartSense

With Hyundai SmartSense, our cutting-edge Advanced Driver Assistance Systems, the new i30 N Series II have been upgraded with more of the very latest safety and driving assist features for added peace of mind. From automatically braking to avoid collisions and keeping you in your lane, to detecting vehicles in your blind spot, the i30 N can alert you of potential dangers around you when driving.



Forward Collision-Avoidance Assist (FCA).
The FCA system warns you and automatically brakes when it detects sudden braking by the car ahead or detects pedestrians in your path.

High Beam Assist (HBA).
Detects oncoming vehicles and vehicles in the same lane and automatically switches to low-beam. When no more vehicles are detected, it reactivates the high beams, maximising your range of vision.

Lane Keeping Assist (LKA).
Uses the front camera to monitor the lines of the road. In case of an unintended lane departure, it will warn the driver and can apply steering correction to guide the car back to the lane.

Rear Cross-Traffic Collision-Avoidance Assist (RCCA).
When reversing out of areas with low visibility, the system not only warns the driver if vehicles approach from the side – it also applies the brakes automatically. (available with the Hatchback version with N DCT)

Lane Following Assist (LFA).
Keeps you centred and safer. When activated, LFA keeps the car centred in its lane at speeds between 0 and 180 kilometres per hour on highways and city streets.

Leading Vehicle Departure Alert (LVDA).
This clever feature for city driving alerts the driver when the vehicle in front departs from an idle state, like at a stoplight or in a traffic jam.

Blind-Spot Collision-Avoidance Assist (BCA-R).
Using two radar sensors in the lower rear bumper, the system warns you of traffic in the blind spot area. Should you set the turn indicator in such a situation, it will sound an acoustic alert and brake to prevent collision. (available with the Hatchback version with N DCT)

Driver Attention Warning (DAW).
When a pattern of fatigue or distraction is identified, the system gets your attention with an alert and pop-up message suggesting a break.

Hyundai's commitment to you

Our promise

We understand your decision to purchase one of our vehicles is not being made lightly and we thank you for putting Hyundai on your list. We know that by the time you decide which vehicle you want to purchase, you'll have had a good look at what's on offer in the market, and carefully weighed up the pros and cons of each. We hope you make the right decision for yourself. If you do decide to choose Hyundai, that won't be the end, it'll just be the start. Our goal is to live up to the confidence you've shown in us, by giving you the best customer service experience in New Zealand.

We call this the Hyundai Ownership Experience – which is a slightly corporate way of saying “we promise to look after you”.

The Hyundai Ownership Experience will actually start before you even have the keys in your hand, as your Hyundai dealer takes you through the things you need to know to get the most out of your new vehicle.



Personal handover

When you come in to pick up your new Hyundai, your dealer will take you through it from bumper to bumper. They'll show you where everything is and how everything works. They'll make sure you're across all those little things most people forget to ask about, like:

- » How to set up your mobile phone to work with Bluetooth
- » Where the tool kit is
- » How to connect and use your Apple CarPlay® or Android Auto®.
- » Where to find the first aid kit
- » How to register, setup and connect to Auto Link

They'll also check there's either a full tank of fuel or it's fully charged, that the vehicle is spotless inside and out, and that any accessories you specified are fitted just so.

This is also our opportunity to introduce you to the service team, who'll be looking after you in the years to come.

“THE DEALER EXPLAINED THE TUCSON TO ME AND WAS PATIENT WHEN WE HAD QUESTIONS.”

— GARY COCKRAM HYUNDAI CUSTOMER FROM CHRISTCHURCH

Meet the rest of the family

There's a good reason why your dealer will introduce you to the rest of the family. They're the people entrusted to be hands-on through your Hyundai Ownership Experience – the team who'll look after you and your vehicle when you come in for scheduled servicing.

There's no charge for the first service, and it happens after the first month on the road. Then it happens every 10,000 / 15,000 km*.

It's always good to be able to put a face to a name. And knowing them means you can call personally to discuss any concerns. Our people are experts at what they do and keen to show you how good they are. It's a pride thing and we encourage it.

A superb warranty and Roadside Assistance

Every new Hyundai is protected by our 3 year / 100,000 km factory warranty. In a nutshell, if there's any manufacturing issues, we'll fix them. But there's more.

Hyundai Roadside Assistance is included as part of our new vehicle warranty. It means if you should have an accident, puncture a tyre or run out of fuel anywhere in New Zealand, we'll send someone to get you up and running again – 24 hours a day, 365 days a year.

Extending your warranty beyond the factory period can make your ownership experience better yet. It's certainly worth considering. Our extended warranties can later be on-sold with the vehicle, something sure to increase its eventual resale value.



Servicing from trained Hyundai experts

Regular scheduled servicing within our network has real benefits.

Our specialist technicians use Hyundai diagnostic equipment to spot things that may be missed by the untrained eye.

We use genuine Hyundai parts, of course. These parts are built and tested to be specifically correct for your vehicle and are covered by a 1 year / 20,000 km warranty.

Your safety and the safety of your passengers are our number one priority. We can't vouch for the safety or performance of non-Hyundai parts. They only have to be slightly off or incorrectly installed and the integrity of your vehicle will be compromised.

If the cost of servicing is a concern for you, committing to a pre-paid service contract from day one will cost you less in the long run. You can sign up for these to cover your servicing needs for every service interval, which is every 10,000 / 15,000 km* or yearly (whichever happens first). You can do this for as many years as you want, and they're available for any Hyundai, no matter how old.



*Servicing for petrol turbo models is every 10,000 km or 12 months (whichever occurs first)

Insurance

Our insurance offering is part of Hyundai's commitment to improving your ownership experience.

Hyundai Insurance offers several exclusive benefits not available with other motor vehicle policies. For example, if your Hyundai is still in factory warranty, was purchased from a Hyundai dealer in New Zealand and is damaged beyond repair, we'll replace it with a brand new one*.

There's no excess if your glass is broken (up to \$2,000 cost), and we'll cover (up to \$1,500 cost) for the trailer you were towing if that's damaged*.

You can be sure only guaranteed, genuine Hyundai parts will be used in repairs**, and that only approved repairers will be working on your vehicle.

We also offer a Hyundai Insurance specific 24 hour assistance number: 0800 123 266.

*See your Hyundai dealer for full terms and conditions.
**Applies to new vehicles for five years.

Hyundai Fleet

If you're looking for the right vehicles for your business, Hyundai has the perfect fleet solution for you.

Whatever your business size or requirements, you can get the job done by choosing from Hyundai Fleet's diverse range of models and trucks, all of which offer the latest in technology, efficiency, safety and style. And as a Fleet customer, you have the flexibility of a range of ownership and leasing options, as well as tax benefits and great value servicing.

So, from the city loving i20 to the cargo carrying iLoad, our fleet services can provide the right vehicles to help drive your business forward. For more information visit www.hyundai.co.nz/fleet



In the company of Kiwis

The Hyundai brand has grown rapidly into a global auto industry powerhouse. But first and foremost, Hyundai New Zealand is a New Zealand company.

Hyundai New Zealand is 100% kiwi owned and all our Hyundai dealers are 100% NZ operated. That's something we're pretty proud of.

This structure gives you the best of both worlds. The benefits of global resources and the huge investment in Research & Development that Hyundai makes, combined with our local commitment and understanding.

We're also very aware of what it means to be a New Zealand company. Our commitment to being a good Kiwi citizen starts with our treatment of customers and extends out into their communities.

We've actively supported the National Agricultural Fieldays for over a decade. We sponsor Hyundai Country Calendar, put money into NZ sailing, and are major sponsors of the Spirit of

Adventure Trust. We're also extremely proud of our New Zealand sponsorship of Kiwi rally driver, Hayden Paddon.



Our sponsorships allow us to offer customers the chance to join us as VIP guests at many of our events, including on board the Spirit of New Zealand and at Fieldays. Look out for these invites from time to time.

The Hyundai Experience will continue to grow and expand. We really want to give you the most rewarding experience you've ever had with a company.



Hyundai Country Calendar visits Doug Avery and his mates on his North Island farm for a yarn.

The Pinnacle Programme

The Pinnacle Programme is a unique scholarship, backed by Hyundai New Zealand, which provides talented young New Zealanders between the ages of 15 and 18 with the foundations for future success. The Programme is open to young kiwis with talent in all areas of endeavours, including, but not limited to, art, sport, science and business.

WWW.PINNACLEPROGRAMME.CO.NZ



Future New Zealand leaders as part of the Pinnacle Programme spend 21 days on New Zealand's iconic Outward Bound programme in Anakiwa, at the top of the South Island.



Hyundai Ambassador Team

Speaking of 0800 numbers, if you dial 0800 HYUNDAI (498 632), you'll be talking directly to one of our Hyundai Ambassador Team members in New Zealand. We operate a local call centre. Our team are trained to support you with any concerns, and they'll be able to help you out with anything you need them to.

We respond to every request, no matter how big or small, as quickly as we can. That's the New Zealand way of doing things, and it's our way too.

If it's an emergency you'll be put straight through to our Roadside Assistance team, who are trained to deal with any situation and will get someone out to you as quickly as possible if that is what is required.

JOIN US ON WWW.FACEBOOK.COM/HYUNDAINZ

Specifications

i30	i30 N HATCH SERIES II MANUAL	i30 N HATCH SERIES II DCT	i30 N FASTBACK SERIES II FASTBACK MANUAL	i30 N FASTBACK SERIES II DCT
ENGINE:	2.0 litre 16 valve twin overhead cam with gasoline direct fuel injection with turbocharger			
Fuel system	Gasoline Direct Injection (GDI)	Gasoline Direct Injection (GDI)	Gasoline Direct Injection (GDI)	Gasoline Direct Injection (GDI)
Displacement (CC)	1,998	1,998	1,998	1,998
Maximum power (kW/rpm)	206 kW / 6,000 rpm	206 kW / 6,000 rpm	206 kW / 6,000 rpm	206 kW / 6,000 rpm
Maximum torque (Nm/rpm)	392 Nm / 2,100-4,700 rpm	392 Nm / 2,100-4,700 rpm	392 Nm / 2,100-4,700 rpm	392 Nm / 2,100-4,700 rpm
Variable Exhaust Valve System	•	•	•	•
TRANSMISSION:				
Transmission type	6 Speed Manual with Rev Matching Function	8 Speed Dual Clutch Transmission (DCT)	6 Speed Manual with Rev Matching Function	8 Speed Dual Clutch Transmission (DCT)
Electronic Limited Slip Differential (E-LSD)	•	•	•	•
Launch Control System	•	•	•	•
Paddle Shifters	-	•	-	•
CHASSIS:				
Drive system	Front Wheel Drive	Front Wheel Drive	Front Wheel Drive	Front Wheel Drive
Front suspension	MacPherson strut suspension with coil springs, gas-filled shock absorbers and anti-roll stabiliser bar			
Rear suspension	Multi-link suspension with coil springs, gas-filled shock absorbers and anti-roll stabiliser bar			
Electronic Controlled Shock Absorber System (ECS)	•	•	•	•
Rear strut brace (removable)	•	•	•	•
WHEELS AND BRAKING SYSTEM:				
Wheels	19" Alloy	19" Alloy	19" Alloy	19" Alloy
Tyre	Pirelli P-Zero HN 235/35 R19	Pirelli P-Zero HN 235/35 R19	Pirelli P-Zero HN 235/35 R19	Pirelli P-Zero HN 235/35 R19
Compact spare wheel and tyre	•	•	•	•
Tyre Pressure Monitoring System (TPMS)	•	•	•	•
Braking system	Power assisted braking system with ventilated front disc and rear disc brakes with ABS, EBD and BAS			
STEERING:				
Type	Rack-Type Motor Driven Power Steering (R-MDPS)			
Steering column	Manual tilt & telescopic adjustment			
Turning Circle (m)	11.6	11.6	11.6	11.6
Energy absorbing collapsible steering column	•	•	•	•
SAFETY FEATURES:				
ABS braking with Electronic Brake-Force Distribution (EBD)	•	•	•	•
Brake Assist System (BAS)	•	•	•	•
Electronic Stability Control (ESC)	•	•	•	•
Traction Control System (TCS)	•	•	•	•
Vehicle Stability Management (VSM)	•	•	•	•
Forward Collision Avoidance (FCA)	•	•	•	•
Lane Keeping Assist (LKA)	•	•	•	•
Blind-spot Collision Avoidance assist (BCA)	-	•	-	-
Blind-spot Collision Warning assist (BCW)	•	-	-	-
Rear Cross-traffic Collision Avoidance assist (RCCA)	-	•	-	-
Rear Cross-traffic Collision Warning (RCCW)	•	-	-	-
Leading Vehicle Departure Alert (LDVA)	•	•	•	•
High Beam Assist (HBA)	•	•	•	•
Driver Attention Assist (DAA)	•	•	•	•
7 Airbags (dual front, side, curtain and drivers knee airbag)	•	•	•	•
Front seatbelt pretensioners and load limiters	•	•	•	•
3-point tether child seat anchor points	•	•	•	•
ISOFIX child seat anchor points	•	•	•	•
Height adjustable seatbelts (front)	•	•	•	•
3-point lap diagonal (ELR) seatbelts	•	•	•	•
Child safety rear door locks	•	•	•	•
Electro Chromatic rear-view Mirror (ECM)	•	•	•	•
Automatic dusk sensing headlights	•	•	•	•
Rain sensing wiper system	•	•	•	•
Rear park assist system	•	•	•	•
Front park assist system	•	•	•	•
Reversing camera	•	•	•	•
First aid kit	•	•	•	•
EXTERIOR FEATURES:				
Power sunroof with blind	Optional Extra	Optional Extra	•	•
Heated and electrically adjustable side mirrors	•	•	•	•

Specifications

i30	i30 N HATCH SERIES II MANUAL	i30 N HATCH SERIES II DCT	i30 N FASTBACK SERIES II FASTBACK MANUAL	i30 N FASTBACK SERIES II DCT
Electric folding side mirrors	•	•	•	•
LED head lights	•	•	•	•
LED Daytime Running Lights (DRL)	•	•	•	•
LED tail lights	•	•	•	•
Rear spoiler with LED stop light	•	•	•	•
INTERIOR FEATURES:				
Suede effect / leather N interior trim **	•	•	•	•
Leather N steering wheel and gearshift trim **	•	•	•	•
Driver seat 10-way electric sliding, reclining, height and lumber adjustable	•	•	•	•
Passenger seat 10-way electric sliding, reclining, height and lumber adjustable	•	•	•	•
Memory driver seat system with 2 positions	•	•	•	•
Heated front seats	•	•	•	•
Heated steering wheel	•	•	•	•
Automatic power windows	•	•	•	•
Wireless smart phone charging***	•	•	•	•
Black head lining	•	•	•	•
Alloy pedals	•	•	•	•
Rear seat 60:40 split folding function	•	•	•	•
SECURITY:				
Proximity key and engine start / stop button	•	•	•	•
Keyless entry with anti-theft alarm	•	•	•	•
Engine immobiliser	•	•	•	•
Hyundai Active Locking Operation (HALO) including speed sensing auto door locking	•	•	•	•
COMFORT AND CONVENIENCE:				
10.25" touch screen audio system with radio, MP3, Apple CarPlay and Android Auto compatibility	•	•	•	•
4 speakers and 2 tweeters	•	•	•	•
Satellite navigation with SUNA traffic updates	•	•	•	•
Bluetooth handsfree phone system	•	•	•	•
Steering wheel mounted audio and cruise controls	•	•	•	•
Front USB input	•	•	•	•
Automatic dual climate control air-conditioning with pollen filter	•	•	•	•
Trip computer including distance to empty, average fuel consumption, average speed and outside temperature display	•	•	•	•
4.2" colour TFT driver information display	•	•	•	•
Illuminated vanity mirror in driver and front passenger sunvisors	•	•	•	•
WEIGHTS AND CAPACITIES:				
Fuel tank capacity (litres)	50	50	50	50
Boot capacity (VDA litres) - seats down	1,287	1,287	1,337	1,287
Boot capacity (VDA litres) - seats up	381	381	436	381
Kerb weight (kg) lightest / heaviest	1,447 / 1,508	1,480 / 1,541	1,431 / 1,511	1,429 / 1,509
EXTERIOR DIMENSIONS:				
Wheelbase (mm)	2,650	2,650	2,650	2,650
Overall length (mm)	4,335	4,335	4,455	4,455
Overall width (mm)	1,795	1,795	1,795	1,795
Overall height (mm)	1,447	1,447	1,419	1,419
Wheel track - front / rear (mm)	1,556 / 1,564	1,556 / 1,564	1,556 / 1,564	1,556 / 1,564
SUSTAINABILITY:				
Combined fuel economy (litres / 100km)*	8.5	8.5	8.5	8.5
Co2 emissions (g / km)	199	197	199	197
WARRANTIES & SERVICING:				
1 year / 10,000 km service intervals (whichever comes first)	•	•	•	•
10 year / 200,000 km anti perforation corrosion body warranty	•	•	•	•
3 year / 100,000 km mechanical warranty	•	•	•	•
3 year / 100,000 km roadside assistance package	•	•	•	•
•: Standard -: Not Available				
Specifications, features, equipment and colours shown in this brochure are subject to change without notice or obligation. *Fuel consumption figures are based on WLTP tests and factory information. These figures are provided to assist you in comparing the fuel consumption of the i30 N range with other vehicles. The actual fuel consumption will depend on many factors, including your driving habits, the prevailing conditions and your vehicle's equipment, condition and use. **Finishes specified as leather contain a combination of genuine leather, polyurethane leather (leather substitute) and man-made materials. ***Compatible smart phones only.				

Specifications

Type	2.0 T-GDi 206 kW	
Displacement (cc)	1,998	
Number of Cylinders	4	
Bore x Stroke (mm)	86.0 x 86.0	
Compression Ratio	9.5	
Max. Power (kW / rpm)	206 / 5,500–6,000	
Max. Torque (Nm/rpm)	392 / 2,100–4,700	
Valve System	16 Valve MLA	
Transmission type	Manual	N DCT (Dual-clutch wet type)
Number of gears	6	8
Performance		
Max. Speed (km/h)	250	
0 to 100 km/h acceleration (sec)	5.9	5.4
Emissions and Fuel Economy		
Fuel consumption combined WLTP (l/100 km)	8.5	8.5
CO ₂ emissions combined WLTP (g/km)	199	197
Weight and Capacities		
Curb Weight (lightest) (kg)	1,419 (Fastback 1,431)	1,455 (Fastback 1,474)
Curb Weight (highest) (kg)	1,499 (Fastback 1,511)	1,535 (Fastback 1,554)
Luggage Space (min / max) (l)	395 / 1,301 (Fastback 450 / 1,351) - without rear stiffness bar	
Brakes		
Front: Type / Size (mm)	Disc ventilated / 360	
Rear: Type / Size (mm)	Disc ventilated / 314	
Wheel type		
19-inch alloy wheels / 8.0J x 19	235 / 35 R19	

Wheels and Dimensions.

The i30 N Series II features 19-inch forged alloy wheels with dark grey matt finish. The lightweight, five-double-spoke wheels were designed for minimum unsprung mass and high strength. They are paired with high-performance Pirelli P-Zero tyres, which have been developed especially for the i30 N and are marked “HN” – Hyundai N.



Unit : mm
(19" Wheel)



19" forged alloy wheel

Interior colours

The i30 N Series II features sporty metal pedals, dark inserts and Performance Blue stitching for both body types. The interior comes in one-tone Black and N Dark Metal. For the i30 N sport seats, there is a artificial suede & leather combination.

The optional N Light Seats (front only) are covered in leather & Alcantara®. N Light Seats are the ultimate sport car seat, lightweight and with a monoform shape, they feature pronounced bolsters for optimal lateral support and the illuminated N logo.



Artificial suede and leather with Performance Blue stitching.



Leather & Alcantara® with Performance® Blue stitching.
For 'N Light' optional seat package only.



Exterior colours



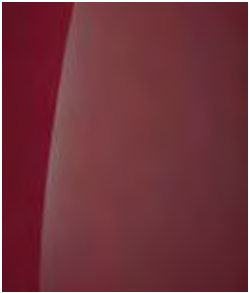
Polar White



Performance Blue



Engine Red



Sunset Red Pearl



Phantom Black




Shadow Gray




Dark Knight Gray Pearl

*Colours shown are indicative only and may vary due to the printing process.

Call our Hyundai Ambassador Team on **0800 HYUNDAI (498 632)**
or email us at customerservice@hyundai.co.nz

 Join Hyundai NZ on Facebook www.facebook.com/hyundainz

 See our videos at www.youtube.com/hyundainz

 Follow us on Instagram @HyundaiNZ

www.hyundai.co.nz

Brochure-i30 N Series II_07/21