

JEEP COMPASS

BUYER'S GUIDE
MARCH 2021



Jeep®

Jeep COMPASS

MODEL HIGHLIGHTS*

LONGITUDE

LIMITED

TRAILHAWK®

Engine

2.4L Tigershark Petrol
129 kW 229 Nm

Engine

2.4L Tigershark Petrol
129 kW 229 Nm

Engine

2.4L Tigershark Petrol
129 kW 229 Nm

Transmission

6-Speed Automatic FWD

Transmission

9-Speed Automatic 4x4

Transmission

9-Speed Automatic 4x4

Fuel Consumption ⁽¹⁾

Combined (L/100km)
TBC

Fuel Consumption ⁽¹⁾

Combined (L/100km)
2.4L AT - 9.7

Fuel Consumption ⁽¹⁾

Combined (L/100km)
2.4L AT - 9.8

Features

- 17-Inch Alloy Wheels
- Rain Sensitive Windshield Wipers
- Automatic Headlamps
- Fog & Cornering Lamps
- Daytime Running Lamps
- Roof Rails
- Deep Tinted Privacy Glass
- Bright Side Window Surrounds
- Exterior Mirror Courtesy Lamps
- Leather Wrapped Steering Wheel
- Power Driver Lumber Adjust
- Fold Forward Passenger Seat
- Passenger In-Seat Cushion Storage
- 8.4-Inch Touchscreen Display
- Reverse Parking Camera
- Satellite Navigation
- Apple CarPlay®
- Android Auto®
- Dual Zone Climate Control
- Bluetooth® Phone & Audio Streaming
- Electric Park Brake
- Full Speed Forward Collision Warning Plus
- Lane Departure Warning
- Blind Spot Monitoring with Rear Cross Path Detection
- 7 Airbags
-

Features

(in addition, or replacing Longitude):

- 18-Inch Alloy Wheels
- 9 Amplified Speakers w/ Subwoofer
- 7-Inch Full Colour Instrument Cluster Display
- Push Button Start
- ParkSense Front & Rear Parking Sensors
- Parallel & Perpendicular Park Assist with Stop
- Adaptive Cruise Control (with Stop & Go)
- Automatic High Beam Control
- Driver Seat Memory

Features

(in addition, or replacing Limited):

- 17-inch Alloy Wheels
- Trail Rated
- Jeep Active Drive Low 4x4 System
- Jeep Selec-Terrain with Rock Mode
- Off-Road Suspension
- Raised Ride Height
- Unique Front and Rear Facia
- Black Anti-Glare Hood Decal
- Natural Grey Exterior Accents
- Red Recovery Hooks
- Hill Descent Control
- 4 Underbody Skid Plates
- Trail Rated Badging
- Full Size Spare Wheel
- Leather Seats
- Leather Seats for Trailhawk
- Passenger Seats
- All Weather Floor Mats
- Reversible Cargo Mat
- 6-Speaker Audio System
- Passive Entry
- Remote Start



Jeep COMPASS

SPECIFICATIONS*

Comfort & Convenience	Code	Longitude	Limited	Trailhawk
Dual Zone Climate Control	HAF	●	●	●
Rear Air-Conditioning Outlets - Rear of Centre Console	-	●	●	●
Push Button Start	GX4	-	●	●
Remote Start	XBM	-	-	●
Keyless Entry - Proximity + Remote	GXD	-	●	●
Power 8-Way Driver/4- Manual Way Passenger Seats	JTB	-	●	●
Manual Driver 6-Way/ Passenger 4-Way Seats	JTM	●	-	-
Power Driver Lumbar Adjust	JPW	●	●	●
Heated Front Seats	JPM	-	●	●
Driver Seat Memory Function	LEQ	-	●	●
Power Liftgate	JRC	-	●	●
Power Windows	JP3	●	●	●
Automatic Headlamps	LMG	●	●	●
Automatic High Beam Control	LMS	-	●	●
Automatic Dimming Internal Rear Vision Mirror	GNK	-	●	●
Headlamp Leveling System	JKL	●	●	●
Rain Sensitive Windshield Wipers	JHC	●	●	●
Tilt & Telescopic Steering Column Adjust	SUD	●	●	●
Power Locking Fuel Filler Door	XJA	●	●	●
Capless Fuel Filler	XJM	●	●	●
Power Adjustable Exterior Side Mirrors	LER	●	●	●
Power Folding Exterior Side Mirrors	GTD	●	●	●
Exterior Mirror Courtesy Lamps	LEC	●	●	●
Side Exterior Mirrors with Defrost	NHJ	●	●	●
Rear Window Wiper	JHB	●	●	●
Rear Window Defroster	GFA	●	●	●

Safety, Security & Driver Assistance	Code	Longitude	Limited	Trailhawk
Parkview™ Reverse Parking Camera with Dynamic Distance Gridlines	XAC	●	●	●
ParkSense® Front & Rear Parking Sensors	XAG	-	●	●
ParkSense® Rear Park Assist System	XAA	●	-	-
7 Airbags (2 Front, 2 Side Curtain, 2 Side Seat, 1 Driver Knee)	-	●	●	●
Full Speed Forward Collision Warning Plus	LSU	●	●	●
Lane Departure Warning Plus	LAS	●	●	●
Blind Spot Monitoring & Rear Cross Path Detection	XAN	●	●	●
Advanced Brake Assist	BGG	●	●	●

Safety, Security & Driver Assistance (Continued)	Code	Longitude	Limited	Trailhawk
Parallel & Perpendicular Park Assist with Stop	XAU	-	●	●
Cruise Control - Adaptive with Stop & Go Function	NHZ	-	●	●
Speed Control	NHM	●	-	-
Speed Limiter	NH2	●	●	●
Tire Pressure Monitoring System	XGM	●	●	●
Electronic Stability Control	BNB	●	●	●
Electronic Roll Mitigation	BNS	●	●	●
Traction Control	BNP	●	●	●
Trailer Sway Control	BNT	●	●	●
Engine Immobiliser	GXW	●	●	●
Battery Run Down Protection	BCS	●	●	●
Rain Brake Support	BHC	●	●	●
Passenger Seat Belt Alert - Front	LAX	●	●	●
Passenger Seat Belt Alert - Rear	LAU	●	●	●
Rear Door Child Protection Locks	GXT	●	●	●

Capability & Performance	Code	Longitude	Limited	Trailhawk
Jeep Active Drive 4x4 System	-	-	●	-
Jeep Active Drive Low 4x4 System	-	-	-	●
Jeep Selec-Terrain Traction Management System	XAB	-	●	●
Off-Road Suspension	SDJ	-	-	●
Disconnecting Rear Axle	-	-	●	●
Hill Start Assist	BNG	●	●	●
Hill Descent Control	BNH	-	-	●
Full Size Spare Wheel - Steel Wheel	TBB	-	-	●
Full size Temporary Use Spare Wheel	TBS	●	●	-
Black Anti-Glare Hood Decal	MYA	-	-	●
Red Recovery Hook - 2 x Front	XEA	-	-	●
Red Recovery Hook - 1 x Rear	XH6	-	-	●
Skid Plate - Fuel Tank	XEE	-	-	●
Skid Plate - Front Suspension	XEU	-	-	●
Skid Plate - Transmission	XE9	-	-	●
Skid Plate - Transfer Case	XEF	-	-	●
Audio & Connectivity	Code	Longitude	Limited	Trailhawk
6 Speaker Audio System	RCG	●	-	●
9 Amplified Speakers w/ Subwoofer	RC3	-	●	-
Integrated Voice Command With Bluetooth®	XRB	●	●	●
Steering Wheel Mounted Audio Controls	RDZ	●	●	●

Standard (●) Option (◐) Not Offered (-)

Jeep COMPASS

SPECIFICATIONS*

Audio & Connectivity (Continued)	Code	Longitude	Limited	Trailhawk
Uconnect® 8.4-Inch NAV Radio	UJQ			
8.4-inch Touchscreen Display	RFL			
Satellite Navigation	JLN			
Apple Carplay®	RFP	•	•	•
Android Auto®	RF5			
Digital Radio (DAB+)	RS9			
Bluetooth® Phone & Audio Streaming	RSL			
AM/FM Radio	-			
Media Hub (USB/AUX)	RSF	•	•	•
Remote USB Port - Rear of Centre Console	RSX	•	•	•
230V Power Outlet - Rear of Centre Console	JKU	•	•	•
12V Power Outlet - Centre Console	JKP	•	•	•

Interior	Code	Longitude	Limited	Trailhawk
Seat Fabric - Cloth	-	•	-	-
Seat Fabric - Leather	-	-	•	•
Steering Wheel - Leather Wrapped	SCC	•	•	•
Shift Knob - Leather Wrapped	CVB	•	•	•
Door Sill Scuff Plates	CLP	-	•	-
Instrument Cluster - 3.5-inch Display	JAY	•	-	-
Instrument Cluster - 7.0-inch Display	JAJ	-	•	•
Electric Park Brake	XC4	•	•	•
Illuminated Entry	LAC	•	•	•
Front Seat - Passenger Fold Forward	CDW	•	•	•
Front Seat - Passenger In Seat Cushion Storage	CVG	•	•	•
Front Seat - Height Adjustable Seat Belts	CGD	•	•	•
Front Seat - Seatback Map Pockets	CSM	•	•	•
Front Centre Armrest - Sliding	CM6	•	•	•
Rear Seat - 60/40 Split Folding	CFN	•	-	-
Rear Seat - 40/20/40 Split Folding	CFW	-	•	•
Sun Visor - Sliding with Illuminated Mirror	GNC	•	•	•
Floor Mats - Carpeted Front & Rear	CLE	•	•	-
Floor Mats - All Weather Front & Rear	CLF	-	-	•
ISOFIX	CGU	•	•	•
Cargo Area - Tonneau Cover	CSC	•	•	•
Cargo Area - Reversible Carpet / Vinyl Cargo Mat	CKK	-	-	•
Cargo Compartment Carpet	CKN	•	-	-
Cargo Area - Tie Down Loops	CKT	•	•	•

Exterior	Code	Longitude	Limited	Trailhawk
Halogen Quad Headlamps	LME	•	-	-
Headlights - Bi-Xenon	LMP	-	•	•
Incandescent Taillamps	LA6	•	-	-
Tail lights - LED	LAY	-	•	•
Daytime Running Lamps	LMX	•	•	•
Fog & Cornering Lamps	LNP	•	•	•
Fog Lamp Bezel - Black	LTA	•	-	-
Fog Lamp Bezel - Bright	LTB	-	•	-
Fog Lamp Bezel - Neutral Grey	LTK	-	-	•
Alloy Wheels - 17-inch - Diamond Cut Aluminium	WD5	-	-	•
Alloy Wheels - 17-inch - Silver	WAC	•	-	-
Alloy Wheels - 18-inch - Aluminium w/ Tech Grey	WPR	-	•	-
Roof Rails - Black	MWE	•	-	-
Roof Rails - Bright	MW1	-	•	-
Roof Rails - Neutral Gray	MW3	-	-	•
Roof - Body Colour	MXU	•	•	-
Roof - Black	APP	-	-	•
Glass - Deep Tint Sunscreen ⁽⁷⁾	GEG	•	•	•
Side Window Surrounds - Bright	MMP	•	•	-
Side Window Surrounds - Neutral Grey	MMF	-	-	•
Door Handles - Body Colour	MNK	•	•	•
Exterior Mirrors - Supplemental Turn Signals	LEB	•	•	•
Exterior Mirrors - Body Colour	LEP	•	•	-
Exterior Mirrors - Neutral Grey	LE6	-	-	•
Grille - Black with Chrome Surround	MYV	•	•	-
Grille - Black with Neutral Grey Surround	MF4	-	-	•

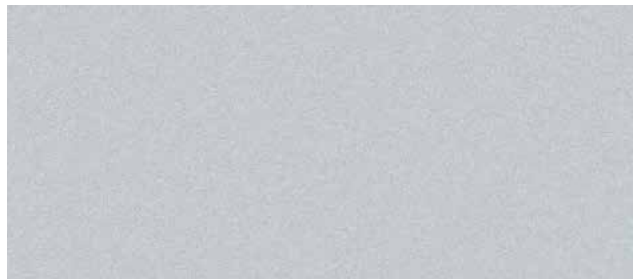
Standard (•) Option (◦) Not Offered (-)

Jeep COMPASS

EXTERIOR COLOUR GUIDE*



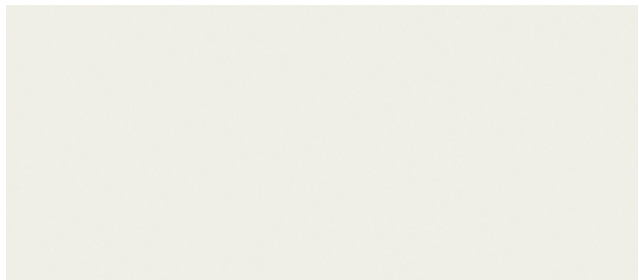
PRX - Colorado Red



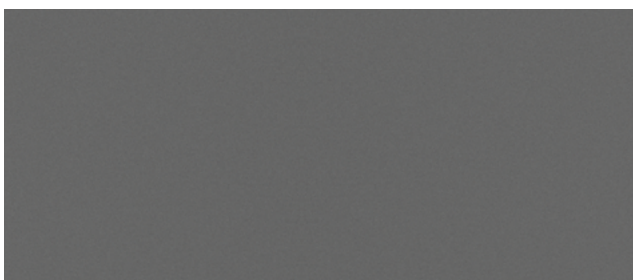
PAF - Minimal Grey



PXR - Brilliant Black (Pearl)



PW6 - Vocal White



PNM - Grey Magnesium (Metallic)

Jeep COMPASS

INTERIOR TRIM GUIDE*

WHEELS*



A7X9 - Black Cloth
(Standard - Longitude)



WAC- 17 x Aluminium Wheels
(Standard on Longitude)



ALX9 - Black Leather
(Standard - Limited)



WPR - 18 x 7.0 Aluminium Wheels
(Standard on Limited)



TLXC - Black Leather
(Standard- Trailhawk)



WD5 - 17 x 6.5 Diamond Cut Aluminium
Wheels (Standard on Trailhawk)

Jeep COMPASS

COLOUR & TRIM MATRIX

	Longitude	Limited	Trailhawk
Option Code	A7X9	ALX9	TLXC
Seat Material	Cloth	Leather	Leather
Seat Colour	Black	Black	Black
Steering Wheel	Leather Wrapped	Leather Wrapped	Leather Wrapped
Accent Stitch		Cattle Tan	Ruby Red
Exterior Colour			
Colorado Red (PRX)	•	•	•
Vocal White (PW6)	•	•	•
Minimal Grey (PAF)	•	•	•
Brilliant Black (PXR)	•	•	•
Grey Magnesio (PNM)	•	•	•

Available (•) Not Offered (-)



Jeep COMPASS

MOPAR® GENUINE ACCESSORIES*



DOOR SILL GUARDS



SIDE WINDOW AIR DEFLECTORS



SLUSH MATS



ENVELOPE CARGO NET



MOULDED CARGO TRAY



BONNET DECAL



SPLASH GUARDS



ROOF-MOUNT SKI AND SNOWBOARD CARRIER



CUSTOM BONNET AND BODY SIDE GRAPHICS



Jeep COMPASS

TECHNICAL INFORMATION*

	Longitude 2.4 6AT FWD	Limited 2.4 9AT 4x4	Trailhawk 2.4 9AT 4x4 Low
Body & Chassis			
Layout	Front Engine, Front Wheel Drive		Front Engine, Four Wheel Drive
Construction	Steel Uniframe		
Doors	5		
Seats	5		
Model Code	M6BM74-2FJ	M6UP74-23G	M6UH74-23E
Powertrain			
Description	2.4L Tigershark Engine		
Capacity	2,359		
Cylinders	4		
Configuration	Inline		
Max. Power (kW @ rpm)	129 @ 6400		
Max. Torque (Nm @ rpm)	229 @ 3900		
Valves	16		
Compression	10.0:1		
Bore & Stroke (mm)	88.0 x 97.0		
Engine Stop/Start	Standard	n/a	n/a
Fuel			
System	Sequential, Multiport, Electronic Fuel Injection		
Type	Unleaded Petrol		
Tank Capacity (L)	60		
Economy (Urban, L/100km) ⁽¹⁾	13.8	13.6	13.7
Economy (Highway, L/100km) ⁽¹⁾	7.2	7.4	7.8
Economy (Combined, L/100km) ⁽¹⁾	9.7	9.7	9.8
Emissions			
Emission Standard Met ⁽¹⁾	6		
Emissions (Combined, CO ₂ g/km) ⁽¹⁾	190	230	230
Performance			
Acceleration (0-100km/h)	10.1	9.3	10.1

	Longitude 2.4 6AT FWD	Limited 2.4 9AT 4x4	Trailhawk 2.4 9AT 4x4 Low
Weights			
Max. Braked Towing Capacity (kg)	Not Recommended	1,000	
Max. Unbraked Towing Capacity (kg)	Not Recommended	450	
Max. Tongue Download (kg) ⁽²⁾	Not Recommended	100	150
Tare Mass (kg)	1,446	1,503	1,623
Gross Vehicle Mass (kg)	1,978	2,087	2,087
Gross Combined Mass (kg)	-	2,987	2987
Transmission			
Type	9-Speed Automatic		
Ratio - 1st	4.46	4.71	
Ratio - 2nd	2.51	2.84	
Ratio - 3rd	1.56	1.91	
Ratio - 4th	1.14	1.38	
Ratio - 5th	0.85	1.00	
Ratio - 6th	0.67	0.81	
Ratio - 7th	-	0.70	
Ratio - 8th	-	0.58	
Ratio - 9th	-	0.48	
Reverse	3.19	3.81	
Brakes			
Front - Type	Ventilated Disc, Floating Single Piston Caliper with ABS		
Front - Size (mm)	305 x 28		
Rear - Type	Solid Disc, Single Piston Floating Caliper with ABS		
Rear - Size (mm)	278 x 12		
Steering			
Type	Electric Power Steering (EPS)		
Kerb to Kerb Turning Circle (m)	11.07	11.07	10.76
Column Adjustment	Tilt & Telescopic		
Warranty & Service			
Warranty	3 Year / 100,000 km		
Roadside Assistance	3 Year / 100,000 km		

Jeep COMPASS

TECHNICAL INFORMATION*

Weights & Capacities	Longitude 2.4 6AT FWD	Limited 2.4 9AT 4x4	Trailhawk 2.4 9AT 4x4 Low
Dimensions			
Length (mm)	4,394		4,398
Width (mm)	1,819		
Height (mm)	1,629	1,644	1,657
Wheelbase (mm)	2,636		
Front Track (mm)	1,547	1,550	1,546
Rear Track (mm)	1,542	1,545	1,538
Wheel & Tyre			
Wheel Type	Alloy		
Wheel Size (Inches)	17 x 7.0	18 x 7.0	17 x 6.5
Tyre Size	225 / 60	225 / 55	225 / 60
Spare Wheel	Full Size Spare Steel Wheel	225 / 60 / R17 Steel Wheel	Full Size Spare Steel Wheel
Suspension			
Type	Coil		
Front	MacPherson Strut with Coil-Over Shock Absorbers		
Rear	Chapman Strut with Coil-Over Shock Absorbers		
4x4 Specifics			
4x4 System	-	Jeep Active Drive	Jeep Active Drive Low
Operating Mode	-	Part Time, Seamlessly Engages 4x4	
Power Transfer Unit	-	YES	
Disconnecting Rear Axle	-	Standard	
Running Clearance (mm)	186	212	225
Approach Angle (Degrees)	15.8	16.8	30.3
Breakover Angle (Degrees)	21.8	22.9	24.4
Departure Angle (Degrees)	30.8	31.7	33.6
Wading Depth (mm) ⁽³⁾	405		480

Jeep[®]

jeep.co.nz

Overseas models may be shown in imagery, New Zealand model and actual colours may vary. All product illustrations and specifications are based upon current information. Jeep New Zealand reserves the right to make changes from time to time, without notice or obligation, in prices, specifications, technical information, accessories, colours, materials and to change or discontinue models. All vehicles, models, features, colours and/or accessories shown may not be available in New Zealand from time to time or at all. "Optional" may mean available as an option but only at an additional cost. For the details of the vehicles, models, features, colours and/or accessories currently available in New Zealand. Please contact an authorised Jeep Dealer.