

Sportage

Model Year 2025



Movement that inspires

Sportage MY25 - Mechanical & Feature List

Engine	2.0L Petrol	1.6L Turbo Petrol	2.0L Turbo Diesel	
Engine Type	In-Line 4 cyl. DOHC ¹ MPI ² D-CVVT ³ 16 Valve (Smartstream G2.0)	In-Line 4 cyl. DOHC ¹ T-GDI ⁴ D-CVVT ³ 16 Valve (Smartstream G1.6 T-GDI ⁴)	In-Line 4 cyl. E-VGT ⁵ CRDI ⁶ 16 Valve (Smartstream D2.0)	
Capacity (CC)	1,999	1,598	1,998	
Max Power (kW @ RPM)	115 @ 6,200	132 @ 5,500	137 @ 4,000	
Max Torque (Nm @ RPM)	192 @ 4,500	265 @ 1,500 ~ 4,500	416 @ 2,000 ~ 2,750	
Bore x Stroke (mm)	81.0 x 97.0	75.5 x 89.0	83.0 x 92.3	
Compression Ratio	10.8 : 1	10.5 : 1	16.0 : 1	
Model Variants	S, SX, SX+	SX+, GT-Line	All variants	
Fuel	2.0L Petrol M/T	2.0L Petrol A/T	1.6L Turbo Petrol DCT	2.0L Turbo Diesel A/T
Fuel Consumption (L/100km) ⁷ - Urban / Combined / Extra-Urban	9.7 / 7.7 / 6.6	11.0 / 8.1 / 6.5	8.8 / 7.2 / 6.3	7.7 / 6.3 / 5.4
CO ₂ Emission (g/km) ⁷ - Urban / Combined / Extra Urban	220 / 175 / 149	249 / 184 / 147	200 / 164 / 144	200 / 163 / 142
Bonnet Insulator	•			
Diesel Particulate Filter	-			•
Fuel Type Recommended	Regular Unleaded ⁸			Diesel
Fuel Tank Capacity (L)	54			
Weight				
Tare Weight (kg)	1,508	1,538	1,643	1,759
Towing Capacity ⁹				
Towing Capacity Unbraked / Braked / Max. Towball Download (kg)	750 / 1,650 / 100	750 / 1,650 / 100	750 / 1,650 / 100	750 / 1,900 / 100
Powertrain Options	S	SX	SX+	GT-Line
2.0 MPI Petrol / 6 Speed Manual / Front Wheel Drive (2WD)	•	•	-	-
2.0 MPI Petrol / 6 Speed Automatic / Front Wheel Drive (2WD)	•	•	•	-
1.6 T-GDI Petrol / 7 Speed Dual Clutch Transmission (DCT) / All Wheel Drive (AWD)	-	-	•	•
2.0 CRDI Diesel / 8 Speed Automatic / All Wheel Drive (AWD)	•	•	•	•
Dimensions				
Overall Length / Width (mm)	4,660 / 1,865			
Overall Height (mm)	1,665		1,680	
Wheelbase (mm)	2,755			
Minimum Ground Clearance (mm)	181			
Luggage Space (Rear Seats Up) (L, VDA)	543			
Luggage Space (Rear Seats Down) (L, VDA)	1,829			
Steering, Brakes & Suspension				
Power Steering System	Column MDPS ¹⁰ (Electric Power Steering)			
DMS ¹¹ System (4 Modes - Eco, Normal, Sport, Smart)	(Not Available on M/T)			
Terrain Mode Select System (3 Modes - Snow, Mud, Sand)	Diesel AWD Only			
Tilt & Telescopic Adjustable Steering Column	•			
Minimum Turning Circle (m)	11.4 - 12.2			
Front / Rear Suspension	McPherson Strut / Multi-Link			
Front / Rear Brakes	305mm Ventilated Disc / 300mm Solid Disc			
Electronic Parking Brake with Auto Hold	(Not Available on M/T)			
Wheels & Tyres				
Wheel Size / Design	17" Machined Alloy	18" Machined Alloy	19" Machined Alloy	19" Machined Alloy (GT-Line)
Tyres	235/65 R17	235/60 R18	235/55 R19	235/55 R19
TPMS (Tyre Pressure Monitoring System)	•			
Spare Wheel Type	Full Size Alloy			
Safety				
Active Safety ¹²				
ABS (Anti-Lock Braking System) with EBD ¹³ & BA ¹⁴	•	•	•	•
ESC (Electronic Stability Control) with TCS ¹⁵	•	•	•	•
DBC (Downhill Brake Control)	•	•	•	•
HAC (Hill-Start Assist Control)	•	•	•	•
TSA (Trailer Stability Assist)	(A/T Only)	(A/T Only)	•	•
MCB (Multi-Collision Braking)	•	•	•	•
AEB (Autonomous Emergency Braking) - Car, Pedestrian, Cyclist & Junction Assist	•	•	•	•
LKA (Lane Keeping Assist) with Line/Road Edge Detection	•	•	•	•
LFA (Lane Following Assist)	•	•	•	•
BCW (Blind Spot Collision Warning) with RCCW (Rear Cross Traffic Collision Warning)	•	•	•	•
BCA (Blind Spot Collision Avoidance Assist) with RCCA (Rear Cross Traffic Collision Avoidance)	(A/T Only)	(A/T Only)	•	•
DAA+ (Driver Attention Alert with Lead Vehicle Departure Alert)	•	•	•	•
SEW (Safe Exit Warning)	•	•	•	•
ISLA (Intelligent Speed Limit Assist)	•	•	•	•

Safety	S	SX	SX+	GT-Line
Parking Sensors with Dash Display	(Rear Only)	(Front & Rear)	(Front & Rear)	(Front & Rear)
Haptic Steering Wheel Feedback	•	•	•	•
Rear View Camera with Dynamic Parking Guidelines	•	•	•	•
3-Point ELR Seatbelts on All Positions	•	•	•	•
ROA (Rear Occupant Alert) - Basic Type	•	•	•	•
HBA (High Beam Assist)	(A/T Only)	(A/T Only)	•	•
Dusk-Sensing Automatic Headlights	•	•	•	•
Front Wiper & Washer (Low/High and 5-Speed Intermittent)	•	•	•	•
Child Restraint Anchorage Points (3 x Top Tether Anchors + 2 x Isofix Positions)	•	•	•	•
Rain Sensing Wipers	-	•	•	•
Electrochromic Rear View Mirror (Auto Dimming)	-	-	•	•
SVM (Surround View Monitor) with 3D Mode	-	-	-	•
BVM (Blind Spot View Monitor)	-	-	-	•
PCA (Parking Collision Avoidance Assist - Reverse)	-	-	-	•
Passive Safety				
Driver & Front Passenger SRS Airbags	•	•	•	•
Centre Side Airbag (Front)	•	•	•	•
Front Side SRS Airbags	•	•	•	•
Curtain SRS Airbags	•	•	•	•
Front Seatbelt Pre-Tensioners with Load Limiters	•	•	•	•
Security				
Burglar Alarm	•	•	•	•
Anti-Theft Immobiliser	•	•	•	•
Remote Central Locking with Boot Release	•	•	•	•
Headlight Escort Function	•	•	•	•
Folding Key Remote (x 2)	•	•	-	-
Smart Key Remote (x 2) with Push Button Start	-	-	•	(Petrol)
Smart Key Remote (x 2) with Push Button Start and RSPA ¹⁶ (Remote Smart Park Assist)	-	-	-	(Diesel)
Seating				
Seat Capacity	5	5	5	5
Seat Trim	Cloth	Cloth	Artificial Leather (Quilted)	Leather Appointed ¹⁷ with Artificial Suede Upper
Front Centre Console Armrest	•	•	•	•
Height Adjustable Front Seatbelts	•	•	•	•
Rear Centre Armrest	•	•	•	•
Split Fold Rear Seats (60:40)	•	•	•	•
Height Adjustable Headrests (All Seats)	•	•	•	•
6-Way Drivers Seat Including Height Adjust (Pumping Device)	•	(with 2-Way Lumbar Support)	-	-
8-Way Power Drivers Seat with 2-Way Power Lumbar Support	-	-	•	•
IMS ¹⁸ Drivers Seat with 2-Position Memory	-	-	-	•
8-Way Power Front Passenger Seat	-	-	-	•
Exterior Features				
Exterior Body Design	Design Type A		Design Type B	
Wheel Arch Mouldings and Bumper Trim	Matte Plastic	Gloss Black	Matte Plastic	
Roof Rails	Silver (Slim Type)		Gloss Black (Bridge Type)	
Outside Door Mirrors with Integrated Side Indicators	Body Coloured		Gloss Black	
Electric Outside Door Mirrors (Adjust/Heated/Folding)	•	•	•	•
LED Daytime Running Lights	•	•	•	•
Rear Spoiler with Integrated High Mounted Stop Lamp (LED)	•	•	•	•
Hidden Rear Wiper	•	•	•	•
Shark Fin Antenna	•	•	•	•
Mud Flaps (Front & Rear)	•	•	•	•
LED Head Lights (MFR Type with Bulb Indicator)	•	•	•	-
LED Tail Lights (Bulb Indicator and Stop Lights)	•	•	•	-
LED Front Fog Lights (MFR Type)	-	-	•	•
Hands-Free Smart Power Tailgate	-	-	•	•
Privacy Glass (Rear Windows & Tailgate)	-	-	•	•
LED Head Lights (Projector Type/Full LED)	-	-	-	•
LED Tail Lights (Full LED)	-	-	-	•
Panoramic Sunroof with Safety Function	-	-	-	•
Interior Features				
Leather Appointed ¹⁷ Steering Wheel	•	•	•	•
Multi-Function Trip Computer (Distance Traveled, Fuel Consumption, Distance to Empty, Etc)	•	•	•	•
Power Windows (Front & Rear)	•	•	•	•
Driver & Passenger Sunvisors with Sliding Function	•	•	•	•
2 x USB Chargers In Front Tray (1 x USB-A & 1 x USB-C)	•	•	•	•
2 x 12 Volt Power Outlets (Boot Side/Front Tray)	•	•	•	•

Interior Features	S	SX	SX+	GT-Line
Auto Up/Down Drivers Window with Safety Function	•	•	•	•
Soft-Touch Dashboard	•	•	•	•
Dashboard Garnish	Gunmetal Grey (Diamond Relief)	Brushed Metal	Premium Weave Pattern	Woodgrain Hydrographic
ASCC (Advanced Smart Cruise Control) with Stop and Go	(A/T Only)	(A/T Only)	•	•
Soft-Touch Door Armrest & Door Upper (Front)	-	•	•	•
Leather Appointed ¹⁷ Shift Knob	-	•	•	-
2 x USB Chargers (USB-C) in Front Seat Backs	-	-	•	•
Steering Wheel Paddle Shifters	-	-	•	•
Shift By Wire Shift Knob (Dial Type)	-	-	-	•
Alloy Sports Pedals	-	-	-	•
LED Interior Lighting (Front & Rear) with Delay Out	-	-	-	•
Ambient Mood Lighting (64 Colours)	-	-	-	•
Wireless Phone Charging ¹⁹	-	-	-	•
Storage				
4 x Cup Holders (2 x Front Console, 2 x Rear Centre Armrest)	•	•	•	•
4 x Bottle Holders (Front & Rear Doors)	•	•	•	•
Map Pockets In Front Doors	•	•	•	•
Centre Console Storage Box with Lid	•	•	•	•
Front Seat Back Pockets	•	•	•	•
2 x Coat Hangers (Front Headrests)	-	-	•	•
Luggage Net Hooks (Cargo Area)	•	•	•	•
Cargo Cover (Retractable)	•	•	•	•
Front Storage Tray	•	•	•	with Sliding Lid
Remote Folding 2nd Row Seat (Release Lever x2 In Boot)	-	•	•	•
Luggage Net	-	-	-	•
Infotainment & Driver Display				
AM/FM Radio	•	•	•	•
DAB Digital Radio	-	•	•	•
Sounds of Nature	-	•	•	•
Steering Wheel Mounted Audio/Bluetooth® Controls	•	•	•	•
Bluetooth® Multi-Connection Functionality (Phone/Media Stream) ²⁰	•	•	•	•
Wired Android Auto™ ²¹ with Voice Recognition	•	•	•	•
Wireless ²² Android Auto™ ²¹ with Voice Recognition	•	-	-	-
Wireless ²³ Apple Carplay™ ²⁴ with Voice Recognition	•	-	-	-
6 Speaker Sound System (4 Speakers, 2 Tweeters)	•	•	-	-
8" Colour Touch Screen Infotainment	•	-	-	-
12.3" Colour LCD Touch Screen Infotainment	-	•	•	-
Basic Digital Driver Cluster with 4.2" Multi Function LCD Display	•	•	•	-
Wired Apple Carplay™ ²⁴ with Voice Recognition	-	•	•	•
Satellite Navigation Multimedia System with 10 Years Traffic Information and Map Updates	-	•	•	•
Personalised Profile (Radio Favourites, Bluetooth Priority etc)	-	•	•	•
8 Speaker Harman Kardon® Premium Sound System (5 Speakers, 2 Tweeters, Subwoofer)	-	-	•	•
Curved Display (12.3" Digital Driver Cluster + 12.3" Touch Screen Infotainment)	-	-	-	•
Ventilation				
2nd Row Vents (Behind Centre Console)	•	•	•	•
Single Zone Air-Conditioning	•	-	-	-
Dual-Zone Climate Control Air-Conditioning	-	•	•	•
Auto Windscreen Defog	-	•	•	•
Heated Front Seats	-	-	•	•
Ventilated Front Seats	-	-	-	•

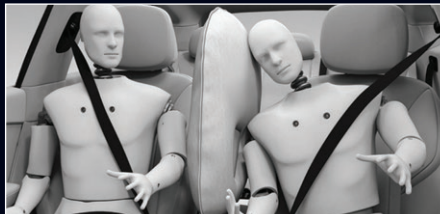
• Standard - Not available

Specifications apply to 2025 Model Year Sportage. Kia Australia reserves the right to discontinue or change the models, features, specifications, options, designs and prices of products referred to in this sheet without incurring any liability whatsoever to any purchaser or prospective purchaser of any such products. Some of the items herein are optional at additional cost. Consult your Kia dealer for the latest information on models, specifications, features, prices, options and availability. Note: Model Year 2025 Sportage will undergo all necessary inspections when available. Until inspections are complete, all information and illustrations are based on data available at the time of publication and subject to change without notice. ¹DOHC - Dual Overhead Cam. ²MPI - Multi-Point Injection. ³D-CVVT - Dual Continuous Variable Valve Timing. ⁴T-GDI - Turbo Gasoline Direct Injection. ⁵E-VGT - Electronic Variable Geometry Turbocharger. ⁶CRDi - Common-Rail Direct Injection. ⁷ADR81/02. ⁸E10 Compatible. ⁹Subject to State regulations and towbar design. ¹⁰MDPS - Motor Driven Power Steering. ¹¹DMS - Drive Mode Select. ¹²Safety technologies are supplemental systems and do not replace the need for the driver to exercise care and attention. ¹³EBD - Electronic Brake Distribution. ¹⁴BA - Brake Assist. ¹⁵TCS - Traction Control System. ¹⁶The Road Traffic Code 2000 in WA prohibits people from driving a vehicle unless a person is behind the steering wheel and they have full control over the vehicle. The use of this Remote Smart Park Assist (RSPA) feature will not comply with this rule and thus it should not be used while within WA. ¹⁷Leather appointed seats may comprise of genuine leather, polyurethane and other man-made materials or a combination thereof. ¹⁸IMS - Integrated Memory Seat. ¹⁹Wireless charging compatible with phones featuring Qi technology or adapter. ²⁰Not all mobile phones will be compatible with the vehicle's Bluetooth® system. Bluetooth® is a registered trademark of Bluetooth SIG. ²¹Android Auto™ connectivity requires compatible Android device. See android.com/intl/en_au/ for more details. Android Auto™ is a registered trademark of Google Inc. ²²Wireless Android Auto™ function requires compatible smartphone and also supports wired connectivity. ²³Wireless Apple CarPlay™ function requires compatible smartphone and does not support wired connectivity. ²⁴Apple CarPlay™ connectivity requires compatible iOS device. See apple.com.au for more details. Apple CarPlay™ is a registered trademark of Apple Inc. Harman/Kardon® is a registered trademark of Harman International Industries, Incorporated. For full terms and conditions on Kia's 7 Year warranty, visit kia.com/au

Features



Overseas Model Shown
Blind Spot Collision Avoidance Assist
with Rear Cross Traffic Collision
Avoidance¹ (Not Available on M/T)



Front Centre Side Airbag



Tuned for Australian Roads



Overseas Model Shown
Autonomous Emergency Braking¹
(with Junction Assist)



Bluetooth[®] Multi-Connection
Functionality²



8 Speaker Harman Kardon
Premium Sound System (SX+, GT-Line)



Overseas Model Shown
Remote Smart Park Assist³
(GT-Line Diesel)

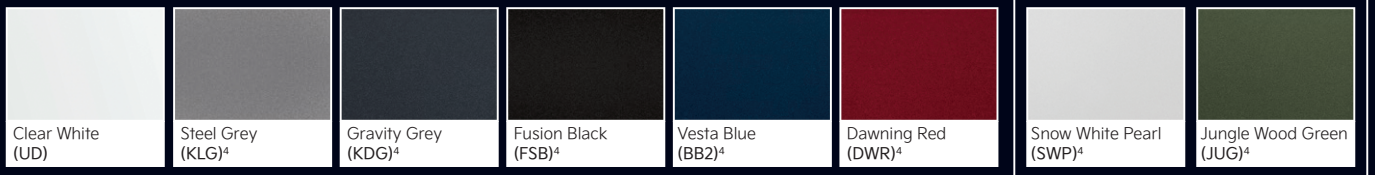


Blind Spot View Monitor¹
(GT-Line)

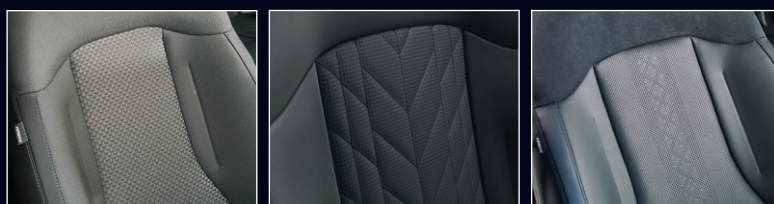


Curved Display (12.3" Digital Driver Cluster
+ 12.3" Touch Screen Infotainment) (GT-Line)

Exterior Colours



Interior Colours



Black Cloth Trim (S, SX)

Black Quilted Artificial
Leather (SX+)

Black Leather Appointed⁵
with Artificial Suede Upper
(GT-Line)

Wheels



17" Alloy
(S)

18" Alloy
(SX)

Engines



115kW 2.0L Petrol
(S, SX & SX+)

132kW 1.6L Turbo Petrol
(SX+ & GT-Line)

137kW 2.0L Turbo Diesel
(S, SX, SX+ & GT-Line)



19" Alloy
(SX+)

19" Alloy
(GT-Line)

¹Safety technologies are supplemental systems and do not replace the need for the driver to exercise care and attention. ²Not all mobile phones will be compatible with the vehicle's Bluetooth[®] system. Bluetooth[®] is a registered trademark of Bluetooth SIG. ³The Road Traffic Code 2000 in WA prohibits people from driving a vehicle unless a person is behind the steering wheel and they have full control over the vehicle. The use of this Remote Smart Park Assist (RSPA) feature will not comply with this rule and thus it should not be used while within WA. ⁴Premium paint at additional cost. ⁵Leather appointed seats may comprise of genuine leather, polyurethane and other man-made materials or a combination thereof. For full terms and conditions on Kia's 7 Year warranty, visit kia.com/au



Kia Australia Pty Ltd ABN 97 110 483 353
Locked Bag 2207, North Ryde BC NSW 1670
Phone 131 KIA (131 542)
kia.com/au



Kia. Driving Australian Sport.