

THE MINI PAUL SMITH EDITION.



x Paul Smith

Hi,

I'm all about standing out without trying too hard. But don't let the stripes fool you. I'm as clever as I am colourful.

I'm the MINI Paul Smith Edition. Designed with a twist, made to turn heads, and built for city streets with a little extra personality. Just like you.

From bold details to thoughtful touches, everything about me is considered. My interior is as refined as it is unexpected, with plenty of space for whatever your day throws at you.

So go on and take a closer look. Explore my colours, finishes and features. Then choose the one that feels unmistakably you.



CONTENTS.

| | |
|-------------------------|---------------------------|
| MINI PAUL SMITH MODELS. | <u>4</u> |
| MINI COOPER SE. | <u>5</u> |
| MINI COOPER S 3-DOOR. | <u>7</u> |
| MINI COOPER S 5-DOOR. | <u>9</u> |
| COOPER S CONVERTIBLE. | <u>11</u> |
| MINI CONNECTED. | <u>13</u> |

MINI PAUL SMITH MODELS.



The MINI COOPER SE PAUL SMITH EDITION.



| | |
|-------------------------------|---------------------|
| Power: | 160 kW |
| Torque: | 330 Nm |
| 0-100 km/h: | 6.7 s |
| Driving Range (WLTP): | Up to 400 km |
| Battery Capacity (Gross/Net): | 54.2 kWh / 49.8 kWh |
| Maximum Charging: | AC 11 kW / DC 95 kW |
| Charging Time AC/DC: | 5h15m / 30m |
| Drive Type / Motor: | FWD / Single |

[GO TO PAGE 5 >](#)

The MINI COOPER S 3-DOOR PAUL SMITH EDITION.



| | |
|-------------------------|----------------|
| Power: | 150 kW |
| Torque: | 300 Nm |
| 0-100 km/h: | 6.6 s |
| Fuel Cons. Combined: | 6.8 L/100 km |
| CO2 Emissions Combined: | 154 g/km |
| Engine: | 4 Cyl/1,998 CC |
| Transmission: | 7sp DCT Auto |
| Drive Type: | FWD |

[GO TO PAGE 7 >](#)

The MINI COOPER S 5-DOOR PAUL SMITH EDITION.



| | |
|-------------------------|----------------|
| Power: | 150 kW |
| Torque: | 300 Nm |
| 0-100 km/h: | 6.8 s |
| Fuel Cons. Combined: | 6.8 L/100 km |
| CO2 Emissions Combined: | 154 g/km |
| Engine: | 4 Cyl/1,998 CC |
| Transmission: | 7sp DCT Auto |
| Drive Type: | FWD |

[GO TO PAGE 9 >](#)

The MINI COOPER S CONVERTIBLE PAUL SMITH EDITION.



| | |
|-------------------------|----------------|
| Power: | 150 kW |
| Torque: | 300 Nm |
| 0-100 km/h: | 6.9 s |
| Fuel Cons. Combined: | 6.9 L/100 km |
| CO2 Emissions Combined: | 156 g/km |
| Engine: | 4 Cyl/1,998 CC |
| Transmission: | 7sp DCT Auto |
| Drive Type: | FWD |

[GO TO PAGE 11 >](#)

[1] Prices shown are recommended retail prices (RRP) including GST, excluding on-road and delivery costs. Prices may be subject to rounding.

[2] New MINI's come with MINI's 5 year warranty, 5 year roadside assistance and 3 year MINI Service Inclusive.

[3] Product features, specifications, models and prices are subject to change without notice. The general information in these materials should always be read in conjunction with other specific materials and information available from MINI New Zealand.

[4] Range and charging performance depends on factors including driving style, route, outside temperature, state of charge and use of vehicle systems (e.g. heating/cooling).

[5] Indicative charging time at maximum power for AC is from 0-100% state of charge and for DC is from 10-80% state of charge.

[6] Fuel consumption, CO2 emissions, power consumption and electric range determined under prescribed measuring procedure EU Reg 715/2007 in the applicable version. Range data determined using WLTP (visit www.bmw.com/wltp).

*Images and colours are for reference only and visual appearance may be different in person.

The MINI
COOPER SE
PAUL SMITH EDITION.



MINI COOPER SE.

DRIVING DYNAMICS & TECHNOLOGY.

- Single Synchronous Electric Motor
- Front Wheel Drive
- Charging cables
- Electromechanical Parking Brake with Automatic Hold Function
- Condition Based Servicing

DRIVER ASSISTANCE & SAFETY SYSTEMS.

- Airbags Front, Side, Head and Interaction
- Anti-lock Braking System and Cornering Brake Control (ABS & CBC)
- Attentiveness Assistant
- Autonomous Emergency Braking (AEB)
- Blind Spot / Lane Change Warning
- Dynamic Stability Control (DSC)
- Exit Warning
- High Beam Assist
- Intelligent Emergency Call
- Rain Sensor Wipers and Automatic Lights
- Rear Collision Prevention
- Rear Crossing Traffic Warning with Brake Intervention
- Speed Limit Information
- Speed Limiter Function
- Tyre Pressure Monitoring System
- Tyre Repair Kit
- Warning Triangle

INFOTAINMENT & DIGITAL SERVICES.

- 240mm Circular OLED Central Instrument Display
- DAB+ Digital Radio
- Head-Up Display
- Integrated Navigation with Augmented Reality View
- Interior Camera
- MINI Connected Package - 3 Year Subscription
- Preparation for Personal E-Sim with 5G Connectivity
- Wireless Apple CarPlay and Android Auto

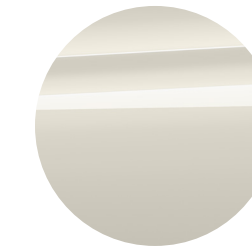
COMFORT & EXPERIENCE.

- Auto-Dimming and Folding Exterior Mirror Package
- Automatic 2-Zone Air Conditioning
- Comfort Access (Keyless Entry) with Digital Key Functions
- Front Floor Mats in Velour
- Interior Rear-View Mirror with Automatic Anti-Dazzle Function
- LED Headlights with Signature Contents
- MINI Experience Modes with Extended Ambient Light Projection
- Recycled Polyester Knit Dash and Door Cards
- Split Folding Rear Seats
- Steering-Wheel Heating
- USB-C ports and 12V Power Socket
- Wireless Phone Charging

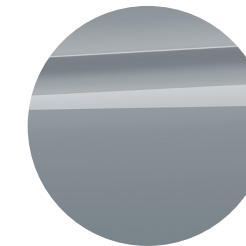
EDITION FEATURES.

- Adaptive Cruise Control
- Panorama Glass Roof
- Parking Assistant Plus with 360° Surround View
- Seat Heating for Front Seats
- Steering and Lane Control Assistant
- Harman/Kardon Sound System, 10 speaker, 315 Watts
- Electric Adjustment for Front Seats
- Driver Seat with Massage and Memory Functions
- Anthracite Headliner
- John Cooper Works Seats
- Sun Protection Glazing
- Sport Steering Wheel with Blue Contrast Stitching and Paul Smith Steering Wheel Strap Design
- Nottingham Green Exterior Highlights
- Blackband in Black / Blue Grain Recycled Maritime Material
- MINI Logos in Black/Blue
- Paul Smith Tailgate Badge Lettering
- Paul Smith "hello" Projected Puddle Lights
- Interior Accent in Dark Steel
- Paul Smith Door Sill Inlays
- Floormat Rivet with Paul Smith "Rabbit" and Blue Accent Stitching

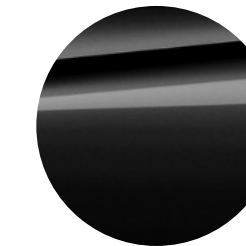
EXTERIOR PAINT COLOURS.



Inspired White

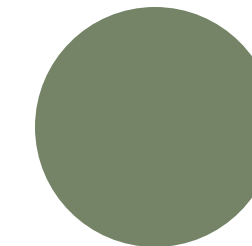


Statement Grey



Midnight Black II

ROOF.

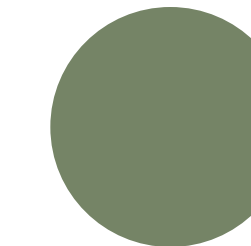


Nottingham Green & Paul Smith Stripes



Jet Black & Matte Stripes

MIRROR CAPS.



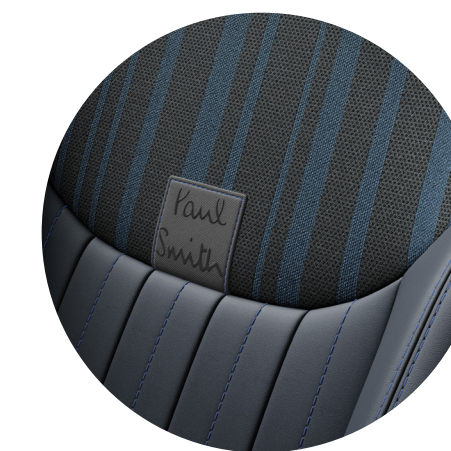
Nottingham Green

ALLOY WHEELS.



18" Night Flash Spoke
Black & Dark Steel

UPHOLSTERY.



Nightshade Blue Vescin/Knit Seats
Dash in Black with Grey Stripe Pattern

*Images and colours are for reference only and visual appearance may be different in person

The MINI
COOPER S 3-DOOR
PAUL SMITH EDITION.



MINI COOPER S 3-DOOR.

DRIVING DYNAMICS & TECHNOLOGY.

- In-Line 4 Cylinder 1998cc Petrol Turbocharged Engine (B48)
- Dual Clutch Transmission (DCT), 7 Speed Automatic
- Electromechanical Parking Brake with Automatic Hold Function
- Start/Stop Engine Function
- Condition Based Servicing

DRIVER ASSISTANCE & SAFETY SYSTEMS.

- Airbags Front, Side, Head and Interaction
- Anti-lock Braking System and Cornering Brake Control (ABS & CBC)
- Attentiveness Assistant
- Autonomous Emergency Braking (AEB)
- Blind Spot / Lane Change Warning
- Dynamic Stability Control (DSC)
- Exit Warning
- High Beam Assist
- Intelligent Emergency Call
- Rain Sensor Wipers and Automatic Lights
- Rear Collision Prevention
- Rear Crossing Traffic Warning with Brake Intervention
- Speed Limit Information
- Speed Limiter Function
- Tyre Pressure Monitoring System
- Tyre Repair Kit
- Warning Triangle

INFOTAINMENT & DIGITAL SERVICES.

- 240mm Circular OLED Central Instrument Display
- DAB+ Digital Radio
- Head-Up Display
- Integrated Navigation with Augmented Reality View
- Interior Camera
- MINI Connected Package - 3 Year Subscription
- Preparation for Personal E-Sim with 5G Connectivity
- Wireless Apple CarPlay and Android Auto

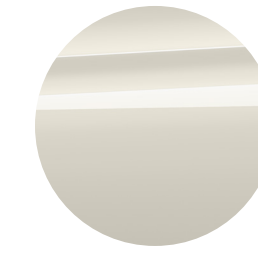
COMFORT & EXPERIENCE.

- Auto-Dimming and Folding Exterior Mirror Package
- Automatic 2-Zone Air Conditioning
- Comfort Access (Keyless Entry) with Digital Key Functions
- Front Floor Mats in Velour
- Interior Rear-View Mirror with Automatic Anti-Dazzle Function
- LED Headlights with Signature Contents
- MINI Experience Modes with Extended Ambient Light Projection
- Recycled Polyester Knit Dash and Door Cards
- Split Folding Rear Seats
- Steering-Wheel Heating
- USB-C ports and 12V Power Socket
- Wireless Phone Charging

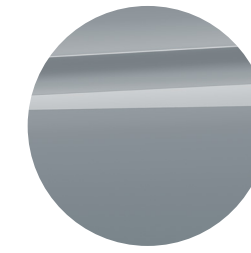
EDITION FEATURES.

- Adaptive Cruise Control
- Panorama Glass Sunroof with Tilt and Slide Functions
- Parking Assistant Plus with 360° Surround View
- Seat Heating for Front Seats
- Steering and Lane Control Assistant
- Harman/Kardon Sound System, 12 speaker, 365 Watts
- Electric Adjustment for Front Seats
- Driver Seat with Massage and Memory Functions
- Anthracite Headliner
- John Cooper Works Seats
- Sun Protection Glazing
- Sport Steering Wheel with Blue Contrast Stitching and Paul Smith Steering Wheel Strap Design
- Nottingham Green Exterior Highlights
- Blackband in Black / Blue Grain Recycled Maritime Material
- MINI Logos in Black/Blue
- Paul Smith Tailgate Badge Lettering
- Paul Smith "hello" Projected Puddle Lights
- Interior Accent in Dark Steel
- Paul Smith Door Sill Inlays
- Floormat Rivet with Paul Smith "Rabbit" and Blue Accent Stitching

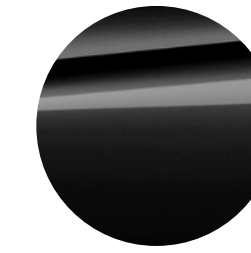
EXTERIOR PAINT COLOURS.



Inspired White

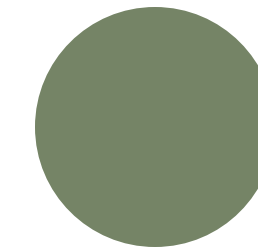


Statement Grey

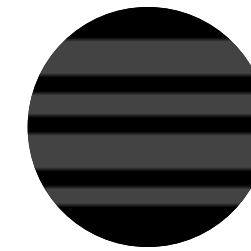


Midnight Black II

ROOF.

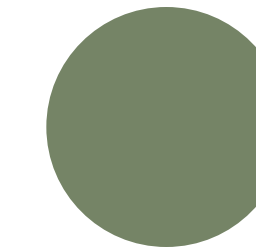


Nottingham Green & Paul Smith Stripes



Jet Black & Matte Stripes

MIRROR CAPS.



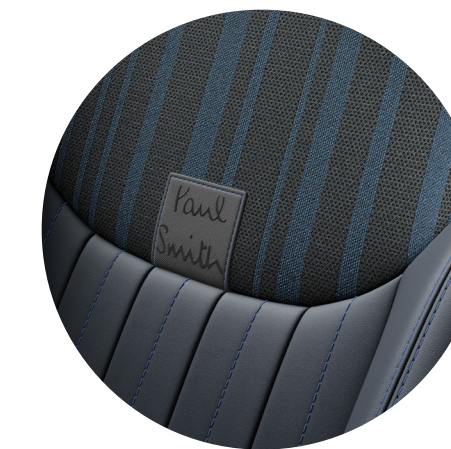
Nottingham Green

ALLOY WHEELS.



18' Night Flash Spoke
Black & Dark Steel

UPHOLSTERY.



Nightshade Blue Vescin/Knit Seats
Dash in Black with Grey Stripe Pattern

*Images and colours are for reference only and visual appearance may be different in person

The MINI
COOPER S 5-DOOR
PAUL SMITH EDITION.



MINI COOPER S 5-DOOR.

DRIVING DYNAMICS & TECHNOLOGY.

- In-Line 4 Cylinder 1998cc Petrol Turbocharged Engine (B48)
- Dual Clutch Transmission (DCT), 7 Speed Automatic
- Electromechanical Parking Brake with Automatic Hold Function
- Start/Stop Engine Function
- Condition Based Servicing

DRIVER ASSISTANCE & SAFETY SYSTEMS.

- Airbags Front, Side, Head and Interaction
- Anti-lock Braking System and Cornering Brake Control (ABS & CBC)
- Attentiveness Assistant
- Autonomous Emergency Braking (AEB)
- Blind Spot / Lane Change Warning
- Dynamic Stability Control (DSC)
- Exit Warning
- High Beam Assist
- Intelligent Emergency Call
- Rain Sensor Wipers and Automatic Lights
- Rear Collision Prevention
- Rear Crossing Traffic Warning with Brake Intervention
- Speed Limit Information
- Speed Limiter Function
- Tyre Pressure Monitoring System
- Tyre Repair Kit
- Warning Triangle

INFOTAINMENT & DIGITAL SERVICES.

- 240mm Circular OLED Central Instrument Display
- Always Open Timer
- DAB+ Digital Radio
- Head-Up Display
- Integrated Navigation with Augmented Reality View
- MINI Connected Package - 3 Year Subscription
- Preparation for Personal E-Sim with 5G Connectivity
- Wireless Apple CarPlay and Android Auto

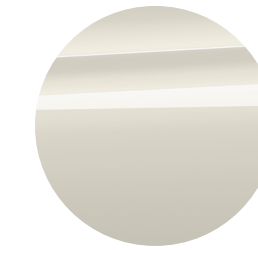
COMFORT & EXPERIENCE.

- Auto-Dimming and Folding Exterior Mirror Package
- Automatic 2-Zone Air Conditioning
- Comfort Access (Keyless Entry) with Digital Key Functions
- Front Floor Mats in Velour
- Interior Rear-View Mirror with Automatic Anti-Dazzle Function
- LED Headlights with Signature Contents
- MINI Experience Modes with Extended Ambient Light Projection
- Recycled Polyester Knit Dash and Door Cards
- Split Folding Rear Seats
- Steering-Wheel Heating
- USB-C ports and 12V Power Socket
- Wireless Phone Charging

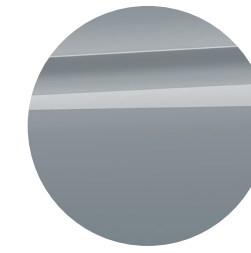
EDITION FEATURES.

- Adaptive Cruise Control
- Panorama Glass Sunroof with Tilt and Slide Functions
- Parking Assistant Plus with 360° Surround View
- Seat Heating for Front Seats
- Steering and Lane Control Assistant
- Harman/Kardon Sound System, 12 speaker, 365 Watts
- Electric Adjustment for Front Seats
- Driver Seat with Massage and Memory Functions
- Anthracite Headliner
- John Cooper Works Seats
- Sun Protection Glazing
- Sport Steering Wheel with Blue Contrast Stitching and Paul Smith Steering Wheel Strap Design
- Nottingham Green Exterior Highlights
- Blackband in Black / Blue Grain Recycled Maritime Material
- MINI Logos in Black/Blue
- Paul Smith Tailgate Badge Lettering
- Paul Smith "hello" Projected Puddle Lights
- Interior Accent in Dark Steel
- Paul Smith Door Sill Inlays
- Floormat Rivet with Paul Smith "Rabbit" and Blue Accent Stitching

EXTERIOR PAINT COLOURS.



Inspired White

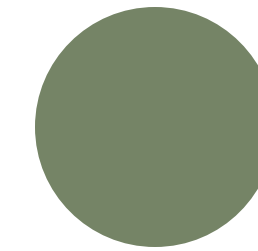


Statement Grey

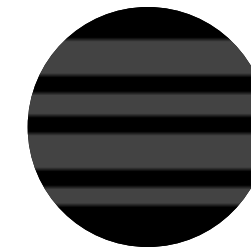


Midnight Black II

ROOF.

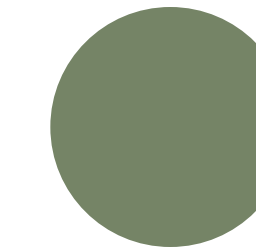


Nottingham Green & Paul Smith Stripes



Jet Black & Matte Stripes

MIRROR CAPS.



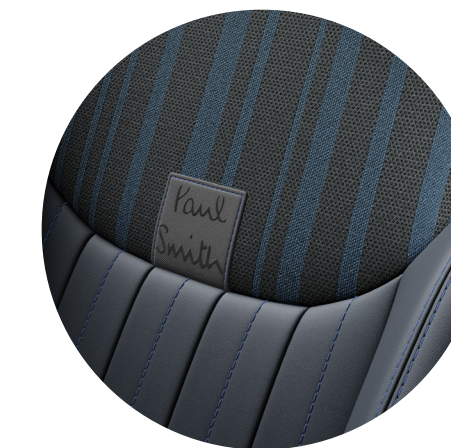
Nottingham Green

ALLOY WHEELS.



18" Night Flash Spoke
Black & Dark Steel

UPHOLSTERY.



Nightshade Blue Vescin/Knit Seats
Dash in Black with Grey Stripe Pattern

*Images and colours are for reference only and visual appearance may be different in person

The MINI
COOPER S CONVERTIBLE
PAUL SMITH EDITION.



MINI COOPER COOPER S CONVERTIBLE.

DRIVING DYNAMICS & TECHNOLOGY.

- In-Line 4 Cylinder 1998cc Petrol Turbocharged Engine (B48)
- Dual Clutch Transmission (DCT), 7 Speed Automatic
- Electromechanical Parking Brake with Automatic Hold Function
- Start/Stop Engine Function
- Condition Based Servicing

DRIVER ASSISTANCE & SAFETY SYSTEMS.

- Airbags Front, Side and Interaction
- Anti-lock Braking System and Cornering Brake Control (ABS & CBC)
- Attentiveness Assistant
- Autonomous Emergency Braking (AEB)
- Blind Spot / Lane Change Warning
- Dynamic Stability Control (DSC)
- Exit Warning
- High Beam Assist
- Intelligent Emergency Call
- Rain Sensor Wipers and Automatic Lights
- Rear Collision Prevention
- Rear Crossing Traffic Warning with Brake Intervention
- Speed Limit Information
- Speed Limiter Function
- Tyre Pressure Monitoring System
- Tyre Repair Kit
- Warning Triangle

INFOTAINMENT & DIGITAL SERVICES.

- 240mm Circular OLED Central Instrument Display
- Always Open Timer
- DAB+ Digital Radio
- Head-Up Display
- Integrated Navigation with Augmented Reality View
- MINI Connected Package - 3 Year Subscription
- Preparation for Personal E-Sim with 5G Connectivity
- Wireless Apple CarPlay and Android Auto

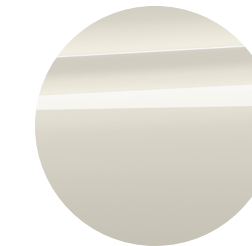
COMFORT & EXPERIENCE.

- Auto-Dimming and Folding Exterior Mirror Package
- Automatic 2-Zone Air Conditioning
- Comfort Access (Keyless Entry) with Digital Key Functions
- Electrically Operated Convertible Soft-top with "Sunroof" Function
- Front Floor Mats in Velour
- Interior Rear-View Mirror with Automatic Anti-Dazzle Function
- LED Headlights with Signature Contents
- MINI Experience Modes with Extended Ambient Light Projection
- Recycled Polyester Knit Dash and Door Cards
- Split Folding Rear Seats
- Steering-Wheel Heating
- USB-C ports and 12V Power Socket
- Wind Deflector
- Wireless Phone Charging

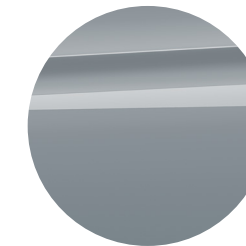
EDITION FEATURES.

- Adaptive Cruise Control
- Parking Assistant Plus with 360° Surround View
- Seat Heating for Front Seats
- Steering and Lane Control Assistant
- Harman/Kardon Sound System, 12 speaker, 365 Watts
- Electric Adjustment for Front Seats
- Driver Seat with Massage and Memory Functions
- John Cooper Works Seats
- Union Jack Soft Top Option
- Sport Steering Wheel with Blue Contrast Stitching and Paul Smith Steering Wheel Strap Design
- Nottingham Green Exterior Highlights
- Blackband in Black / Blue Grain Recycled Maritime Material
- MINI Logos in Black/Blue
- Paul Smith Tailgate Badge Lettering
- Paul Smith "hello" Projected Puddle Lights
- Interior Accent in Dark Steel
- Paul Smith Door Sill Inlays
- Floormat Rivet with Paul Smith "Rabbit" and Blue Accent Stitching

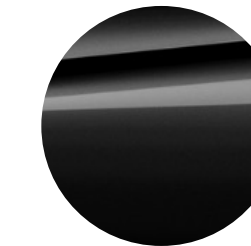
EXTERIOR PAINT COLOURS.



Inspired White



Statement Grey



Midnight Black II

SOFT-TOP.

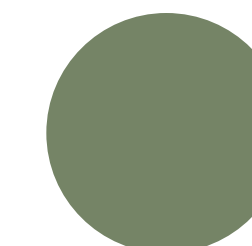


Standard



Union Jack

MIRROR CAPS.



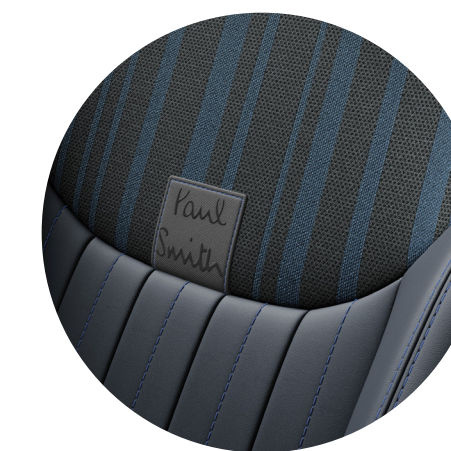
Nottingham Green

ALLOY WHEELS.



18" Night Flash Spoke
Black & Dark Steel

UPHOLSTERY.



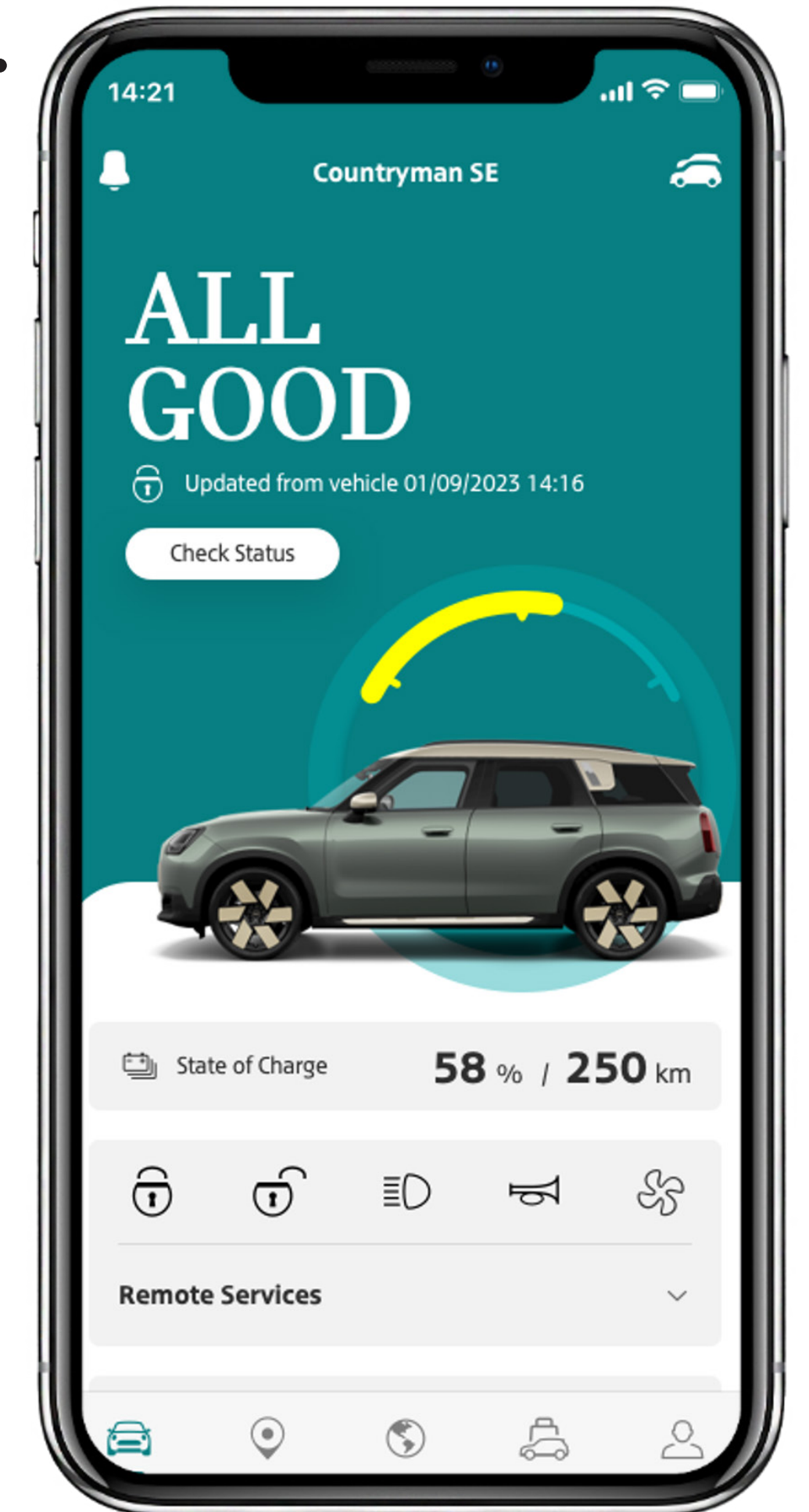
Nightshade Blue Vescin/Knit Seats
Dash in Black with Grey Stripe Pattern

*Images and colours are for reference only and visual appearance may be different in person

MINI CONNECTED & MINI APP. EXPANDED DIGITAL EXPERIENCE.

New MINIs come with a 3-year subscription to MINI Connected Package.

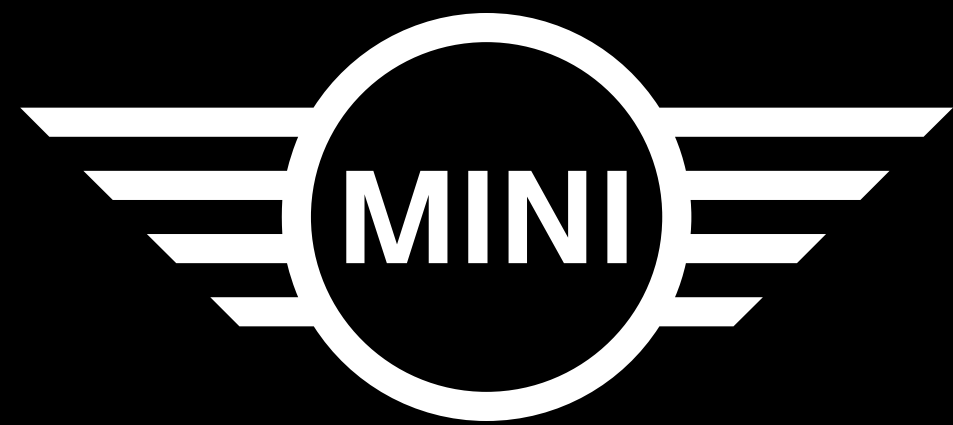
| | | MINI Connected Base | MINI Connected Package |
|---|---|----------------------|------------------------|
| Navigation | Buildings visualization | 2D | 3D |
| | Junction and Exit Visualisation | | ● |
| | Charging optimized routes | ● | ● |
| | Coloured Real Time Traffic Visualization on Map | active guidance only | ● |
| | Map Streaming | ● | ● |
| | Online Navigation (Using Live Traffic Info) | ● | ● |
| Traffic / Safety Information | Enriched Information Points of Interest (POI) | | ● |
| | Traffic Camera Information | | ● |
| Intelligent Personal Assistant (IPA) | “MINI” as 1st visualization | ● | ● |
| | “Spike” as 2nd Visualization | | ● |
| | Alexa Integration | ● | ● |
| | Pro-Active Tips for Better Car Usage | ● | ● |
| | Speech Control of Car Functions | ● | ● |
| Personalised Proactive Features | Geo-Based Routines (e.g. Automated Window) | | ● |
| | Proactive Route Information | | ● |
| App Store | 3rd Party Apps | weather only | full app store |
| Personalisation | MINI ID | ● | ● |
| Data | Remote Services | ● | ● |
| Smartphone Integration | Apple CarPlay / Android Auto | ● | ● |



Remote Services and Vehicle Control

*To retain MINI Connected Package at the conclusion of the 3-year subscription, customers must book a monthly or annual MINI Connected Package subscription and have entered their payment details which will begin a 1- month free period. The subscription can be cancelled at any time during the free period and the account will not be charged. Auto-renewal of the subscription will begin at the end of the free period. MINI Connected Package in an ongoing service that requires a monthly or annual payment plan to function after the free trial period ends. Customers can manage and terminate MINI Connected Package in the “My Orders” page in the MINI Connected Store. Customers can reactivate their MINI Connected Package again at any time. MINI Connected features and functions are subject to change without notice as per MINI Connected terms and conditions.





x

Paul Smith

