



# Nissan X-TRAIL specifications

|   |             |             |        |         |             |             | e-POWER |             |  |
|---|-------------|-------------|--------|---------|-------------|-------------|---------|-------------|--|
|   | ST          | ST-L        | N-TREK | Ti      | Ti-L        | ST-L        | Ti      | Ti-L        |  |
| <b>Dimensions</b>   |             |             |        |         |             |             |         |             |  |
| <b>Exterior</b>   |             |             |        |         |             |             |         |             |  |
| Overall length (mm)   | 4,680       |             |        |         |             |             |         |             |  |
| Overall width (mm, including mirrors)   | 2,065       |             |        |         |             |             |         |             |  |
| Overall height (mm, unladen)  | 1,725       |             |        |         |             |             |         |             |  |
| Wheelbase (mm)  | 2,705       |             |        |         |             |             |         |             |  |
| Track width (mm, front/rear)  | 1,585/1,590 |             |        |         |             |             |         |             |  |
| Ground clearance unladen (mm, between axles)                                      | 205         |             |        |         |             |             | 187     |             |  |
| Turning circle (m, curb-to-curb)  | 11.1        |             |        |         |             |             |         |             |  |
| <b>Interior</b>   |             |             |        |         |             |             |         |             |  |
| Head room (mm, first row/second row)  | 1,050/1,000 |             |        | 999/960 |             |             |         |             |  |
| Leg room (mm, first row/second row)   | 1,095/892   |             |        |         |             |             |         |             |  |
| Shoulder room (mm, first row/second row)  | 1,451/1,422 |             |        |         | 1,451/1,398 | 1,451/1,422 |         | 1,451/1,398 |  |
| Hip room (mm, first row/second row)   | 1,374/1,274 |             |        |         |             |             |         |             |  |
| 5-seat cargo capacity: second row upright (Litres, to roof)                       | 585         |             |        |         |             |             | 575     |             |  |
| 7-seat cargo capacity: second row upright/third row folded flat (Litres, to roof) | 465         |             |        |         |             |             |         |             |  |
| <b>Weights (FWD/4x4)</b>  |             |             |        |         |             |             |         |             |  |
| Gross Vehicle Mass* (kg)  | 2,040/2,295 |             |        | 2,135   |             | 2,380       |         |             |  |
| Kerb mass† (kg)   | 1,540/1,643 | 1,578/1,666 |        | 1,668   | 1,672       | 1,871       | 1,903   | 1,911       |  |
| Maximum braked towing capacity* (kg)  | 2,000       |             |        |         |             |             | 1,650   |             |  |
| Maximum unbraked towing capacity* (kg)  | 750         |             |        |         |             |             |         |             |  |
| Maximum roof load (kg)  | 100         |             |        |         |             |             |         |             |  |
| <b>Safety and security</b>  |             |             |        |         |             |             |         |             |  |
| Intelligent Around View® Monitor with Moving Object Detection                     |             | •           | •      | •       | •           | •           | •       | •           |  |
| ProPILOT*   |             | •           | •      | •       | •           | •           | •       | •           |  |
| Rear view camera  | •           | •           | •      | •       | •           | •           | •       | •           |  |
| Rear parking sensors  | •           | •           | •      | •       | •           | •           | •       | •           |  |
| Front parking sensors   |             | •           | •      | •       | •           | •           | •       | •           |  |
| Intelligent Forward Collision Warning   | •           | •           | •      | •       | •           | •           | •       | •           |  |
| Intelligent Emergency Braking with junction assist & pedestrian/cyclist detection | •           | •           | •      | •       | •           | •           | •       | •           |  |
| Intelligent Rear Automatic Braking  | •           | •           | •      | •       | •           | •           | •       | •           |  |
| Rear Cross Traffic Alert  | •           | •           | •      | •       | •           | •           | •       | •           |  |
| Blind Spot Warning  | •           | •           | •      | •       | •           | •           | •       | •           |  |
| Intelligent Blind Spot Intervention   | •           | •           | •      | •       | •           | •           | •       | •           |  |
| Lane Departure Warning  | •           | •           | •      | •       | •           | •           | •       | •           |  |
| Intelligent Lane Intervention   | •           | •           | •      | •       | •           | •           | •       | •           |  |
| Intelligent Driver Alert  | •           | •           | •      | •       | •           | •           | •       | •           |  |
| Intelligent Cruise Control  | •           | •           | •      | •       | •           | •           | •       | •           |  |
| Traffic Sign Recognition  | •           | •           | •      | •       | •           | •           | •       | •           |  |
| Tyre Pressure Monitoring System   |             | •           | •      | •       | •           | •           | •       | •           |  |
| Trailer sway control  | •           | •           | •      | •       | •           | •           | •       | •           |  |
| Speed limiter   | •           | •           | •      | •       | •           | •           | •       | •           |  |
| Vehicle Dynamic Control (VDC) with Traction Control System (TCS)                  | •           | •           | •      | •       | •           | •           | •       | •           |  |
| Acoustic Vehicle Alerting System (low speeds up to 30 km/h)                       |             |             |        |         |             | •           | •       | •           |  |
| Rear seat (door) alert  | •           | •           | •      | •       | •           | •           | •       | •           |  |
| Temporary use spare wheel and tyre  | •           | •           | •      | •       | •           |             |         |             |  |
| Tyre repair kit   |             |             |        |         |             | •           | •       | •           |  |
| <b>Airbags</b>  |             |             |        |         |             |             |         |             |  |
| Front seat airbags (driver & front passenger)                                     | •           | •           | •      | •       | •           | •           | •       | •           |  |
| Seat side airbags (driver & front passenger)                                      | •           | •           | •      | •       | •           | •           | •       | •           |  |
| Front row far side airbag (centre)  | •           | •           | •      | •       | •           | •           | •       | •           |  |
| Side curtain airbags (driver & passenger side)                                    | •           | •           | •      | •       | •           | •           | •       | •           |  |
| <b>Comfort and convenience</b>  |             |             |        |         |             |             |         |             |  |
| 7.0" TFT Advanced Drive-Assist® Display instrument cluster                        | •           | •           |        |         |             | •           |         |             |  |
| 12.3" TFT Advanced Drive-Assist® Display instrument cluster                       |             |             | •      | •       | •           |             | •       | •           |  |
| 10.8" Head-Up Display   |             |             | •      | •       |             |             | •       | •           |  |
| Air-conditioning  | •           |             |        |         |             |             |         |             |  |
| Dual-zone automatic climate control   |             | •           | •      |         |             | •           |         |             |  |



# Nissan X-TRAIL specifications

|  |    |      |        |    |      |      | e-POWER |      |  |
|--|----|------|--------|----|------|------|---------|------|--|
|  | ST | ST-L | N-TREK | Ti | Ti-L | ST-L | Ti      | Ti-L |  |
| <b>Trim</b>  |    |      |        |    |      |      |         |      |  |
| Seat trim – cloth  | •  |      |        |    |      |      |         |      |  |
| Seat trim – synthetic leather  |    | •    | •      |    |      | •    |         |      |  |
| Seat trim – genuine leather-accented*  |    |      |        | •  |      |      | •       |      |  |
| Seat trim – quilted Nappa leather-accented*  |    |      |        |    | •    |      |         | •    |  |
| Front seatback pockets   | •  | •    | •      | •  | •    | •    | •       | •    |  |
| <b>Exterior</b>  |    |      |        |    |      |      |         |      |  |
| Body colour door handles   | •  | •    |        | •  | •    | •    | •       | •    |  |
| Black door handles   |    |      | •      |    |      |      |         |      |  |
| V-motion front grille with silver accent   | •  | •    |        | •  | •    |      |         |      |  |
| V-motion front grille with black accent  |    |      | •      |    |      | •    | •       | •    |  |
| Silver roof rails  | •  | •    |        | •  | •    | •    | •       | •    |  |
| Black roof rails   |    |      | •      |    |      |      |         |      |  |
| Black side moulding  | •  | •    | •      |    |      | •    |         |      |  |
| Chrome side moulding   |    |      |        | •  | •    |      | •       | •    |  |
| Grey lower front and lower rear fascia   | •  | •    |        |    |      | •    |         |      |  |
| N-TREK front and lower rear fascia   |    |      | •      |    |      |      |         |      |  |
| Silver lower front and lower rear fascia   |    |      |        | •  | •    |      | •       | •    |  |
| Body colour roof (with body colour rear spoiler, shark fin antenna and door mirrors [mirrors excl. N-TREK])                                  | •  | •    | •      | •  | •    | •    | •       | •    |  |
| Black painted roof <sup>†</sup> (with black rear spoiler, shark fin antenna and door mirrors)  |    |      | ◦      | ◦  | ◦    |      | ◦       | ◦    |  |
| Black door mirrors   |    |      | •      |    |      |      |         |      |  |
| e-POWER badge (front doors & tailgate). e-4ORCE badge (tailgate)   |    |      |        |    |      | •    | •       | •    |  |
| <b>Exterior – lighting</b>   |    |      |        |    |      |      |         |      |  |
| LED headlights   | •  | •    | •      | •  | •    | •    | •       | •    |  |
| LED tail lights  | •  | •    | •      | •  | •    | •    | •       | •    |  |
| LED daytime running lights   | •  | •    | •      | •  | •    | •    | •       | •    |  |
| LED fog lights   |    |      | •      | •  | •    |      | •       | •    |  |
| LED high mounted stop light  | •  | •    | •      | •  | •    | •    | •       | •    |  |
| LED turn signal in door mirrors  | •  | •    | •      | •  | •    | •    | •       | •    |  |
| <b>Exterior – wheel &amp; tyre</b>   |    |      |        |    |      |      |         |      |  |
| 17" alloy wheels with 235/65 R17 tyres   | •  |      |        |    |      |      |         |      |  |
| 18" alloy wheels with 235/60 R18 tyres   |    | •    |        |    |      | •    |         |      |  |
| 18" N-TREK alloy wheels with 235/60 R18 tyres  |    |      | •      |    |      |      |         |      |  |
| 19" alloy wheels with 235/55 R19 tyres   |    |      |        | •  | •    |      | •       | ◦    |  |
| 20" alloy wheels with 255/45 R20 tyres   |    |      |        |    |      |      |         | •    |  |
| <b>Exterior – glass</b>  |    |      |        |    |      |      |         |      |  |
| Privacy glass (second row & rear windows)  |    | •    | •      | •  | •    | •    | •       | •    |  |
| Tilt & slide power sunroof with panoramic glass roof   |    |      |        | •  | •    |      | •       | •    |  |
| <b>Exterior paint</b>  |    |      |        |    |      |      |         |      |  |
| Solid White  | •  |      |        |    |      |      |         |      |  |
| Scarlet Ember  | •  | •    |        | •  | •    | •    | •       | •    |  |
| Brilliant Silver <sup>#</sup>  | ■  | ■    |        | ■  | ■    | ■    | ■       | ■    |  |
| Gun Metallic <sup>#</sup>  | ■  | ■    | ■      | ■  | ■    | ■    | ■       | ■    |  |
| Caspian Blue <sup>#</sup>  | ■  | ■    |        | ■  | ■    | ■    | ■       | ■    |  |
| Diamond Black <sup>#</sup>   | ■  | ■    | ■      | ■  | ■    | ■    | ■       | ■    |  |
| Champagne Silver <sup>#</sup>  |    | ■    | ■      | ■  | ■    | ■    | ■       | ■    |  |
| Ivory Pearl <sup>#</sup>   |    | ■    | ■      | ■  | ■    | ■    | ■       | ■    |  |
| Ceramic Grey <sup>#</sup>  |    | ■    | ■      | ■  | ■    | ■    | ■       | ■    |  |
| Ceramic Grey with black roof <sup>†</sup>  |    |      | ■      | ■  | ■    |      | ■       | ■    |  |
| Ivory Pearl with black roof <sup>†</sup>   |    |      | ■      | ■  | ■    |      | ■       | ■    |  |
| Caspian Blue with black roof <sup>†</sup>  |    |      |        | ■  | ■    |      | ■       | ■    |  |
| Champagne Silver with black roof <sup>†</sup>  |    |      | ■      |    |      |      | ■       | ■    |  |
| <b>Ownership</b>   |    |      |        |    |      |      |         |      |  |
| Up to 10 year / 300,000 kilometre service activated warranty** otherwise; 5 year unlimited kilometre warranty**                              |    |      |        |    | •    |      |         |      |  |
| Up to 10 year / 300,000 kilometre service activated roadside assist <sup>3</sup> otherwise; 1 year unlimited kilometre warranty <sup>3</sup> |    |      |        |    | •    |      |         |      |  |
| 5 Year Flat Price Service Schedule <sup>M</sup>  |    |      |        |    | •    |      |         |      |  |

• Standard   
 □ Not available   
 ◦ Option   
 ■ Premium Paint

# Nissan X-TRAIL specifications

## Choose your exterior paint colour



Solid White



Ivory Pearl<sup>#</sup>



Brilliant Silver<sup>#</sup>



Ceramic Grey<sup>#</sup>



Gun Metallic<sup>#</sup>



Diamond Black<sup>#</sup>



Champagne Silver<sup>#</sup>



Scarlet Ember



Caspian Blue<sup>#</sup>



Ivory Pearl with black roof<sup>#~</sup>



Ceramic Grey with black roof<sup>#~</sup>



Champagne Silver with black roof<sup>#~</sup>



Caspian Blue with black roof<sup>#~</sup>

## Wheel and tyre options



17" alloy wheel  
Standard on ST grades



18" alloy wheel  
Standard on ST-L grades



18" N-TREK alloy wheel  
Standard on N-TREK



19" alloy wheel  
Standard on Ti grades  
Standard on Ti-L 2.5L  
Optional on Ti-L e-POWER



20" alloy wheel  
Standard on Ti-L e-POWER

## Choose your interior trim



Light charcoal seat trim.  
Available on ST.



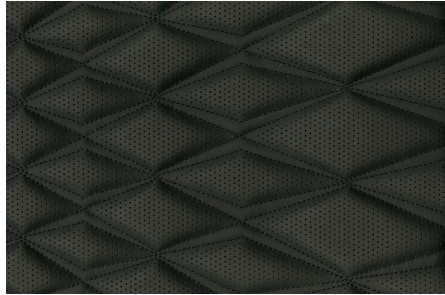
Black synthetic leather seat trim.  
Available on ST-L & N-TREK



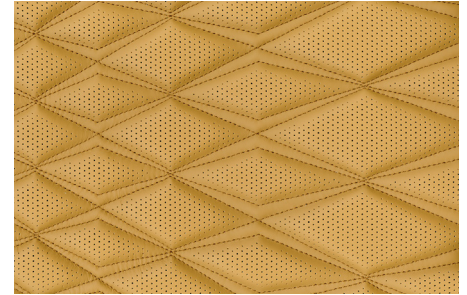
Black genuine leather-accented\* seat trim.  
Available on Ti.



Light grey genuine leather-accented\* seat trim.  
Available on Ti.



Black quilted Nappa leather-accented\* seat trim.  
Available on Ti-L.



Tan quilted Nappa leather-accented\* seat trim. Available  
on Ti-L.

- <sup>o</sup> Torque figures are quoted independently for front and rear electric motors respectively and cannot be added together.
- <sup>Δ</sup> Figures tested in accordance with ADR81/02 (Combined Test, Urban, Extra Urban). Figures stated for the purposes of comparison amongst vehicles only and may not reflect real world driving results. Actual fuel consumption and CO2 emissions depends on factors such as traffic conditions, vehicle condition, how you drive and any accessories fitted.
- <sup>o</sup> Gross Vehicle Mass is the maximum loaded mass of a vehicle.
- <sup>†</sup> Kerb mass is the unladen mass of the vehicle with full tank of fuel without any accessories fitted.
- <sup>+</sup> Towing capacity is subject to towbar/towball capacity and is based on the fitment of a Genuine Nissan towbar. Towing capacity figure described is a maximum figure. Actual towing capacity depends on the laden mass of the vehicle, driving conditions, fitment of any accessories or towing equipment limitations including the maximum towball download.
- <sup>+</sup> ProPILOT cannot prevent collisions. It is the driver's responsibility to be in control of the vehicle at all times. Always monitor traffic conditions and keep both hands on the steering wheel. System operates only when lane markings are detected. Does not function in all weather, traffic and road conditions. System has limited control capability and the driver may need to steer, brake or accelerate at any time to maintain safety. See Owner's Manual for safety information.
- <sup>^</sup> CarPlay is a registered trademark of Apple Inc. Android Auto is a trademark of Google LLC. Compatible device required. Wired connections require a USB connection.
- <sup>o</sup> Compatible device required.
- <sup>\*</sup> Leather-accented features and upholstery may contain synthetic material. Minor trim variations may occur from time to time.
- <sup>#</sup> Premium paint available at extra cost. In some cases, the printed colours may vary from the actual paint colours.
- <sup>-</sup> Black painted roof available on N-TREK, Ti & Ti-L models at additional cost.
- <sup>\*\*</sup> Whichever occurs first, when servicing at authorised Nissan dealers. Where vehicle is not serviced through Nissan or ceases to be serviced at Nissan, additional years will not be added so 10 year/300,000km warranty (whichever occurs first) may not apply. Warranty protection will remain 5 year/unlimited km warranty, plus any additional service activated years previously added. Conditions apply. Full terms at [Nissan.com.au/warranty](https://www.nissan.com.au/warranty).
- <sup>o</sup> When servicing at authorised Nissan dealers. Where vehicle is not serviced through Nissan or ceases to be serviced at Nissan, additional years will not be added, so 10 year/300,000km roadside assist (whichever occurs first) may not apply. Roadside assist duration will remain as 1 year/unlimited kilometre roadside assist, plus any service activated years previously added. Conditions apply. Full terms at [Nissan.com.au/roadsideassistance](https://www.nissan.com.au/roadsideassistance).
- <sup>M</sup> Ask your Nissan Dealer to explain exactly what items are covered in each Scheduled Service. Applies for the first 5 services or 5 years, whichever occurs first. Some exclusions apply. Ask your Nissan Dealer or view full terms at [Nissan.com.au/service](https://www.nissan.com.au/service).



FINANCIAL  
SERVICES

For more information please visit [nissan.com.au/owners](https://www.nissan.com.au/owners), ask your Nissan Dealer or phone 1800 035 035 during normal AEST business hours.

All illustrations, information and specifications presented and referred to in this brochure were correct at the time this brochure was approved for printing. The colours in the photographs may vary from actual colours. Nissan Motor Co (Australia) Pty. Ltd. reserves the right, subject to the laws of Australia and/or the regulations of any competent authority which may apply from time to time, at its discretion at any time and without prior notice, to discontinue or change the models, features, specifications, designs and prices of the products referred to in this brochure and any optional equipment therefore without incurring any liability whatsoever to any purchaser or prospective purchaser of any such products. Some of the items referred to herein are optional at extra cost. Some options may be required in combination with other options. Always consult your Nissan Dealer for the latest information on models, specifications, features, prices, options and availability. Nissan Motor Co (Australia) Pty. Ltd. ACN 004 663 156. Updated June 2025.



NissanAustralia



@nissanaustralia



NissanAustralia