



Nissan MY24 JUKE

SPECIFICATIONS

	ST	ST+	ST-L	Ti	N-Sport
Engine					
HR10DDT - 1.0 litre DOHC Turbocharged in-line 3-cylinder, 12-valve					
Power - 84 kW @ 5,250 rpm	•	•	•	•	•
Torque - 180 Nm @ 2,400 rpm					
Idle Stop/Start	•	•	•	•	•
Drivetrain					
7-Speed Dual Clutch Transmission (DCT) Automatic	•	•	•	•	•
Drive Mode Selector (Sport/Standard/Eco)			•	•	•
Brakes					
Anti-lock Braking System (ABS)	•	•	•	•	•
Electronic Brakeforce Distribution	•	•	•	•	•
Electronic Stability Programme	•	•	•	•	•
Brake Assist	•	•	•	•	•
Hill Start Assist	•	•	•	•	•
Intelligent Trace Control	•	•	•	•	•
Intelligent Ride Control	•	•	•	•	•
Front ventilated disc brakes	•	•	•	•	•
Rear solid disc brakes	•	•	•	•	•
Electric Park Brake with Auto Hold Function	•	•	•	•	•
Vehicle Dynamic Control (VDC) with Traction Control System (TCS)	•	•	•	•	•
Suspension/Steering					
MacPherson strut front suspension	•	•	•	•	•
Twist beam coil spring rear suspension	•	•	•	•	•
Front and rear stabiliser bars	•	•	•	•	•
Safety/Security					
3-point Emergency Locking Retractor front and rear seatbelts	•	•	•	•	•
Child restraint anchorage (ISOFIX outboard rear seats & tether. Centre seat tether only)	•	•	•	•	•
Height adjustable front seat belts	•	•	•	•	•
Seatbelt reminder (front and rear)	•	•	•	•	•
Front parking sensors		•	•	•	•
Rear parking sensors	•	•	•	•	•
Alarm	•	•	•	•	•
Intelligent Around View® Monitor with Moving Object Detection			•	•	•
Rearview camera with Predictive Path	•	•			
ProPILOT® (Lane Keep Assist)			•	•	•
Intelligent Cruise Control	•	•	•	•	•
Emergency Stop Signal	•	•	•	•	•
LED rear tail lights	•	•	•	•	•
Intelligent Emergency Braking with Pedestrian & Cyclist Detection	•	•	•	•	•
Forward Collision Warning	•	•	•	•	•
Lane Departure Warning	•	•	•	•	•
Intelligent Lane Intervention	•	•	•	•	•
Blind Spot Warning	•	•	•	•	•

NISSAN JUKE SPECIFICATIONS

Specifications

	ST	ST+	ST-L	Ti	N-Sport
Intelligent Blind Spot Intervention	•	•	•	•	•
Rear Cross Traffic Alert	•	•	•	•	•
Intelligent Driver Alert	•	•	•	•	•
Active Speed Limiter	•	•	•	•	•
Traffic Sign Recognition	•	•	•	•	•
Tyre Pressure Monitoring System (TPMS)				•	•
Airbags					
Driver and front passenger front impact SRS airbags	•	•	•	•	•
Driver and front passenger side impact SRS airbags	•	•	•	•	•
Front to rear SRS curtain airbags	•	•	•	•	•

Comfort/Convenience

7" TFT Advanced Drive-Assist® Display instrument cluster	•	•			
12.3" TFT Advanced Drive-Assist® Display instrument cluster			•	•	•
Multi-function D-shape Steering Wheel	•	•	•	•	•
Paddle shifters	•	•	•	•	•
Speed-sensitive variable intermittent windshield wipers	•	•	•	•	•
12V power outlets (x1)	•	•	•	•	•
Cup holders (x2) and bottle holders (x4)	•	•	•	•	•
Tilt and telescopic steering adjustment	•	•	•	•	•
Welcome light	•	•	•	•	•
Cabin light - front and rear	•	•	•	•	•
Rear Luggage hooks (x2)	•	•	•	•	•
Luggage space light	•	•	•	•	•
Luggage board for rear cargo area				•	•
Front and rear electric windows with One Touch Driver window control	•	•			
Front and rear electric windows with One Touch Driver and Passenger window control			•	•	•
Driver and passenger sun visor with vanity mirror	•	•	•	•	•
Jack knife key	•	•			
Intelligent Key® with walkaway lock & approach unlock function			•	•	•
Push button engine start			•	•	•
Satellite navigation		•	•	•	•
Air-conditioning	•				
Auto air-conditioning		•	•	•	•
Driver and Passenger seat back pockets			•	•	•
Rain-sensing front wipers			•	•	•
Manual dimming rearview mirror	•	•			
Automatic dimming rear view mirror			•	•	•
Nissan Genuine illuminated JUKE entry kick plates				•	•

Audio & Connectivity

12.3" touchscreen display	•	•	•	•	•
Wireless Apple CarPlay®† & wireless Android Auto™†	•	•	•	•	•
Wireless Smartphone Charger**			•	•	•
Voice Recognition	•	•	•	•	•
AM/FM/AUX audio system	•	•	•	•	•
Bluetooth® with audio streaming and handsfree phone system	•	•	•	•	•
Digital radio (DAB+)	•	•	•	•	•
Front USB charging/Audio input port (Type-A&C)	•	•	•	•	•
Rear USB charging port (Type-A&C)			•	•	•
4 speakers	•	•			
6 speakers			•		
10 speaker Bose® Personal Plus with headrest audio (driver and front passenger)				•	•

Exterior

Optional two-tone black roof			•	•	
LED Daytime Running Lights	•	•	•	•	•
Pearl Black rear spoiler	•	•	•	•	•

NISSAN JUKE SPECIFICATIONS

Specifications

	ST	ST+	ST-L	Ti	N-Sport
Black grained plastic front door outer handles	•	•			
Body coloured outside door handles			•	•	•
Pearl Black power-adjustable door mirrors with integrated indicators	•	•	•	•	•
Automatic LED headlights with High Beam Assist and Follow Me Home function	•	•	•	•	•
Heated and auto-fold door mirrors	•	•	•	•	•
LED Fog lights		•	•	•	•
Privacy glass (second row and rear windows)			•	•	•
Front and Rear bumper and door accents (satin grey)				•	
Front and Rear bumper and door accents (black)					•
Silver front lip finisher				•	•
Pearl Black Shark Fin Antenna			•	•	•
Wheels / Tyres					
17" x 70" steel flex wheels with P215/60R17 tyres	•				
17" x 70" two-tone alloy wheels with P215/60R17 tyres		•			
19" x 7.5" alloy wheel with P225/45R19 tyres			•	•	
19" x 7.5" Akari alloy wheels with P225/45 R19 tyres					•
Temporary steel wheel with space saver tyre	•	•	•	•	•

Interior

6-way manual adjustable driver seat	•	•	•	•	•
4-way manual adjustable front passenger seat	•	•			
6-way manual adjustable front passenger seat			•	•	•
Adjustable rear headrests	•	•	•	•	•
Black headliner	•	•	•	•	•
60/40 split folding 2nd-row seat	•	•	•	•	•
Interior chrome door handles	•	•	•	•	•
Carbon fibre look instrument cluster and speaker surrounds	•	•	•	•	•
Leather-accented* shift knob and gear shift boot	•	•	•	•	•
Metallic grey centre console and front door trim	•	•	•		
Black leather-accented* soft pad meter visor			•	•	•
Leather-accented* steering wheel	•	•	•	•	•
Dimmable Ambient Lighting (Gear console and door trim)			•	•	•
Driver and front passenger seat headrest diamond shape cutout				•	•
Heated front seats		•	•	•	•
Part synthetic leather/cloth monoform seats with melange accents			•		
Soft-pad door trim, dashboard and knee pad (black)			•		
Black chrome driver and front passenger headrest finisher				•	•
Black chrome centre console and front door trim				•	•
Part PVC and part Alcantara monoform seats				•	
Monoform black cloth seats	•	•			
Black Alcantara® dashboard, knee pad, door trim and front armrest				•	
Part PVC and part Alcantara monoform seats with yellow highlights and stitching					•
Black grained PVC dashboard and black PVC door finisher with yellow highlights and stitching					•

Dimensions (mm)

Exterior	
Overall length	4,210
Overall width (without mirrors)	1,800
Overall height	1,593
Wheelbase	2,636
Track width (unladen) - front/rear	1,560/1,552
Ground clearance (minimum)	172
Turning circle (m) - Kerb to Kerb	10.57
Interior (1st/2nd row)	
Head room (front/rear)	996/948
Leg room (front/rear)	1,049/843
Shoulder room (front/rear)	1,357/1,320

NISSAN JUKE SPECIFICATIONS

	ST	ST+	ST-L	Ti	N-Sport
Capacities					
Seating capacity			5		
Cargo capacity with 2nd row upright (litres)			422		
Cargo capacity with 2nd row folded (litres)			1,305		
Fuel tank (litres)			46		
Maximum towing capacity - braked (kg)*			1,250		
Maximum towing capacity - unbraked (kg)*			648		

Weights (kg)					
Kerb mass-		1,251		1,274	
Gross Vehicle Mass (GVM) [∞]			1,730		

Fuel Economy					
Fuel economy (Litres/100km combined cycle) ^Δ			5.8L/100km		
CO2 emission (g/km) ^Δ			136		
Fuel type recommended - Premium Unleaded			95 RON		

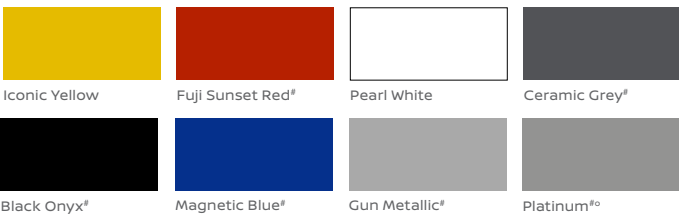
Warranty					
Nissan 5 Year Warranty*	•	•	•	•	•
5 year 24-Hour Roadside Assistance Program**	•	•	•	•	•
Capped Price Service with 12 month/15,000km intervals (whichever comes first) ^{>>}	•	•	•	•	•

Exterior Paint					
Iconic Yellow			•	•	
Pearl White	•	•	•	•	
Fuji Sunset Red [#]	■	■	■	■	
Ceramic Grey [#]			■	■	
Gun Metallic [#]	■	■	■	■	
Black Onyx [#]	■	■	■	■	
Magnetic Blue [#]	■	■	■	■	
Platinum ^{#o}			■	■	
Iconic Yellow with Black Roof					•
Pearl White with Black Roof			•	•	
Fuji Sunset Red [#] with Black Roof			■	■	
Ceramic Grey [#] with Black Roof			■	■	■
Magnetic Blue [#] with Black Roof			■	■	
Gun Metallic [#] with Black Roof ^o					■
Platinum [#] with Black Roof ^o					■

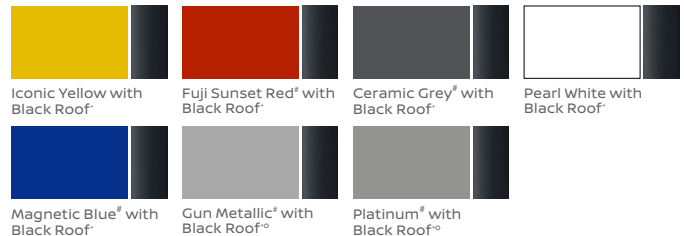
Standard
 Premium Paint

CHOOSE YOUR EXTERIOR PAINT COLOUR

SINGLE TONE COLOURS



TWO TONE COLOURS*



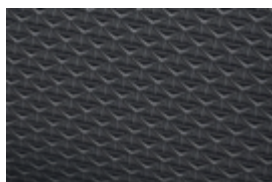
CHOOSE YOUR INTERIOR TRIM



Part PVC and part Alcantara monoform seats with yellow highlights and stitching. Available on N-Sport.



Part PVC and part Alcantara monoform seats. Available on Ti.



Monoform black cloth seats. Available on ST, ST+ and ST-L.

- ◊ ProPILOT cannot prevent collisions. It is the driver's responsibility to be in control of the vehicle at all times. Always monitor traffic conditions and keep both hands on the steering wheel. System operates only when lane markings are detected. Does not function in all weather, traffic and road conditions. System has limited control capability and the driver may need to steer, brake or accelerate at any time to maintain safety. See Owner's Manual for safety information
- * Leather-accented features and upholstery may contain synthetic material.
- * Towing capacity is subject to towbar/towball capacity and is based on the fitment of a Genuine Nissan towbar. Towing capacity figure described is a maximum figure. Actual towing capacity depends on the laden mass of the vehicle, driving conditions, fitment of any accessories or towing equipment limitations including the maximum towball download. The maximum towball download for this vehicle is 75kg.
- △ Figures tested in accordance with ADR81/02 (combined test). Figures stated for the purposes of comparison amongst vehicles only. Actual fuel consumption and CO2 emissions depends on factors such as traffic conditions, vehicle condition, how you drive and any accessories fitted.
- † CarPlay is a registered trademark of Apple Inc. Android Auto is a trademark of Google LLC. Compatible device required. Wired connections require a USB connection.
- ** Compatible device required.
- + New Vehicle Warranty expires 5 years from date of first registration or 5 years from the date of purchase for demonstration vehicles in Western Australia. Conditions apply. See nissan.com.au/warranty for more details.
- >> Ask your Nissan Dealer to explain exactly what items are covered in each Scheduled Service. Applies for up to 6 years/90,000kms (whichever occurs first). Some exclusions apply. Ask your Nissan Dealer or visit nissan.com.au/service to find out more and for full terms and conditions.
- ∞ Gross Vehicle Mass is the maximum loaded mass of a vehicle.
- Kerb mass is the unladen mass of the vehicle with full tank of fuel without any accessories fitted.
- †† Terms and conditions apply, please visit nissan.com.au/roadsideassistance
- # Premium paint available at extra cost.
- Black painted roof available at additional cost.
- ◊ Exterior paint available by dealer order only



FINANCIAL
SERVICES

For more information please visit nissan.com.au/owners, ask your Nissan Dealer or phone 1800 035 035 during normal AEST business hours.

All illustrations, information and specifications presented and referred to in this brochure were correct at the time this brochure was approved for printing. The colours in the photographs may vary from actual colours. Nissan Motor Co (Australia) Pty. Ltd. may at its discretion at any time and without prior notice discontinue or change the models, features, specifications, designs and prices of the products referred to in this brochure and any optional equipment without incurring any liability whatsoever to any purchaser or prospective purchaser of any such products. Some of the items referred to herein are optional at extra cost. Some options may be required in combination with other options. Always consult your Nissan Dealer for the latest information on models, specifications, features, prices, options and availability.

Nissan Motor Co (Australia) Pty. Ltd. ACN 004 663 156.



NissanAustralia



@nissanaustralia



NissanAustralia