

# SKODA



The all-new  
**Elroq**



[contents](#)

## **Elroq**

Sportline

RS

## **Accessories**

Accessories Wheels

## **Technical Data**

## Be more Elroq

The future is electric and it will come in all sizes. With the new Elroq, our electric cars enter a new segment. A smaller, more agile take on our already proven and popular tech. It is also our first model to introduce our Modern Solid design language to series production.

On the outside, the signature element of the Modern Solid design language is the sleek and stylish Tech Deck Face, which will become the distinctive feature of all future Škoda electric models. The Air Curtains emphasise our focus on efficiency by making the Elroq one of the most aerodynamic Škoda models to date, boasting an aerodynamic coefficient of 0.26. With a selection of batteries of up to 82 kWh and several choices of single or dual motor drivetrains, this allows the new Elroq to achieve more than 500 km of range.

The interior will pamper the driver and passengers with state-of-the-art ergonomics and a complete package of displays and screens, including the optional Augmented Reality Head-up display. At the same time, the upholstery was made with specific attention to sustainability, including the use of recycled materials.

With the new Elroq, the future is not only electric. It is also full of style and driving enjoyment, while also being environmentally friendly.





## The world of Modern Solid

As the first production model to use the Modern Solid design language, the Elroq stands out with its bold and dynamic looks built out of straight lines and sleek shapes. The stylish look is highlighted by elements like the sharply-styled headlights or newly designed front bumper with Unique Dark Chrome front spoiler.



### Tech Deck Face

The Tech Deck Face is a modern, glossy black interpretation of the traditional Škoda grille, which also houses functional elements like front radar. It is flanked by the sleek, dynamic running lights, while the main headlights are mounted lower.

### Aerodynamic rear

The powerful Modern Solid design language continues in the rear, with the large black diffuser with Unique Dark Chrome insert and angular Air Curtain outlets on the sides. The rear lights with dynamic turn signals are a subtle finishing touch.



#### **Virtual pedal**

The tailgate can be equipped with a virtual pedal enabling contact-free access. This is available exclusively in the Sportline model with the electrically-controlled 5th door and KESSY.

#### **KESSY**

With the new version of KESSY (Keyless Entry, Start and exit System), all doors can be used to unlock or lock the car. The Walk Away function also locks the car automatically once you leave the vicinity of the car.



#### Modern and sustainable

The Timiano green colour is certainly not the only thing green about it. Available in two Design Selections, the simple and spacious interior focuses on providing a sumptuous experience in a sustainable way. That's why it uses modern eco-friendly materials like Econyl, Recytitan, and Technofil, made from recycled materials such as PET bottles, nylon from fishing nets or repurposed clothing. Being sustainable has never looked so stylish! \*orange seatbelts not available on NZ models.



### Cockpit of the future

The small Virtual Cockpit display of the Elroq was specifically designed to only show the most important information for a driver of an electric car. Besides standard driving data, you can highlight navigation, driving assists, or both. Everything can also be displayed on the optional Augmented Reality Head-Up display, like the “floating” navigation arrows.

## Always in control

All the information that you need, always where you need it. The combination of Virtual Cockpit, 13" Infotainment display, and optional Augmented Reality Head-up display will show the most important information right in front of you, allowing you to focus on what really matters.



### The new steering wheel

The multifunctional steering wheel comes with leather upholstery as standard and displays lettering instead of the badge on the steering wheel, complementing the Modern Solid design language.

### Infotainment

The world at your fingertips. With a 13" touchscreen, the Škoda Infotainment offers an even clearer way of displaying all the information and entertainment features that will make travelling a truly enjoyable experience. Operation is smoother and faster thanks to the new generation of MIB system.



### Electric seats

The seats offer a sporty shape with lots of lateral support, yet remain supremely comfortable. They are electrically adjustable and offer a memory function. The upholstery makes use of sustainable recycled materials.



### Ambient lighting

The attractive looks and tactile surfaces of the interior are complemented by the ambient lighting with a wide choice of colours to suit your mood in any moment. Simple, yet so varied!



### Always charged

The phone box provides wireless 15 watt charging for your smartphone with cooling to prevent your device from overheating. This compartment is easily accessible and offers space for a second smartphone beside the one being charged.



### Jumbo box and the centre console

Electronic devices can be safely stored in the Jumbo box in the front armrest, while small items can be placed in a removable tray. And when the air conditioning is on, you can even cool your snacks. There are also two easy-open cupholders.



#### Rear armrest

The rear armrest with a pair of cupholders can be folded out when the rear middle seat is unoccupied. The cupholder cover helps to stabilise the drinks in case of heavy braking.

Note: Interior shown is not available in NZ

## Little things that make a big difference

Even the simplest details can make your everyday experience much better. A plethora of small, ingenious ideas that will surprise you and make your life on the road that much easier.



#### Storage compartment

Rear passengers can now also have everything they need easily to hand. The storage compartment fits over the centre tunnel and provides space for smaller items, phones, or drinks.



### Boot space

In its standard configuration, the Elroq offers 470 litres of cargo space. If you need even more space, you can increase the useable volume to 1,580 litres by folding down the rear seats. And it is not just about space – with its various smart features and compartments, the Elroq takes the ease of transporting both small and large things to another level.



### Charging cable net

The net pocket under the boot cover, available in the package with the Virtual pedal, offers a convenient place to store your charging cable and always have it at hand, even when the boot is full.



### Connectivity

With Apple CarPlay or Android Auto, you can safely and easily use selected smartphone apps on the infotainment screen.

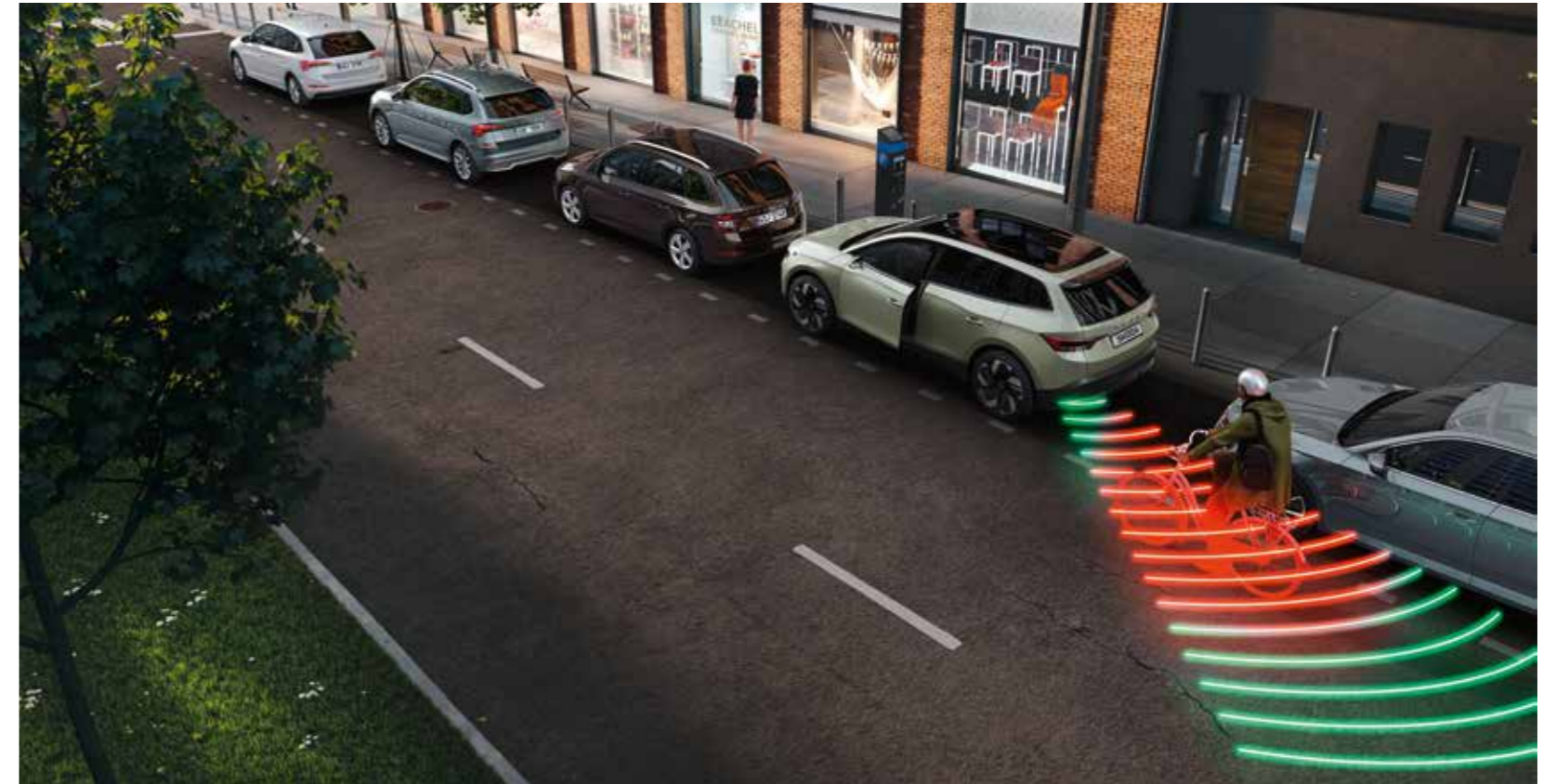


### Turn Assist and Collision Avoidance Assist

Turn Assist monitors opposing traffic when turning right at low speeds between 2–15 km/h. In critical situations, it can stop the vehicle and turn on the warning lights. Collision Avoidance Assist supports the driver by actively increasing the steering moment in the event of an impending collision with a pedestrian, cyclist, or another vehicle – ideally preventing the accident with a controlled evasive manoeuvre.

## Travel Assist

The Travel Assist system combines the functions of several assistants and ensure that you feel safe and comfortable, no matter where you drive. For maximum safety, the system must be constantly monitored by the driver. That's why a capacitive steering wheel detects the driver's tactility, providing an interactive interface to the system. If the driver is not engaged in driving, this behaviour is detected by the capacitive steering wheel.



### Door Opening Warning

When you stop your car and open the door (to get out), the system can detect other road users, such as vehicles, cyclists, runners, pedestrians, etc. up to a distance of 35 m. If it detects an approaching object, it warns the crew in the front and rear, both visually and audibly, about getting out of the vehicle.

This is an illustrative image depicting an assistance system feature and does not represent any specific Škoda model.



**Trained Parking**

A highly advanced parking assistant is used to automatically complete a parking manoeuvre in a familiar environment, e.g., at home. First, the driver performs the parking manoeuvre and saves the route to the system's memory. For example, it records the route from the entrance to your property to the garage or a parking space. After that, as soon as the car recognises the scanned route, it will ask you (via the infotainment) whether it should take control. Following your approval, the vehicle will park itself. You simply monitor it from the driver's seat.

**Additional experts on board**

To ensure that the car is ready to handle all situations that may occur en route, additional assistants with multiple functions are on hand to help or fill in for the driver.



**Intelligent Park Assist (optional)**

Let your car find and offer you parking spaces. Select one and then just sit back and watch. The Elroq will autonomously drive itself into the parking space, without driver having to touch the wheel or pedals.

This is an illustrative image depicting an assistance system feature and does not represent any specific Škoda model.



### Loft interior

Grey Recytitan pad with green stitching

Anthracite décor

Grey artificial leather/Recytitan upholstery with green stitching



### Design Selection Loft

The seat upholstery combines artificial leather with Recytitan recycled fabric in elegant grey colour with green stitching. It is tastefully complemented by the glossy anthracite décor and Recytitan dashboard and door pads in grey colour with green stitching.



Sportline



## Dynamic style for every day

Efficient doesn't mean boring! The Elroq Sportline adds a spark of dynamics to the overall package, with blacked-out trim and side mirrors, unique badge, and specific wheels. The Sportline Design Selection is available for all battery versions.



### Style and functionality

The black glossy features, such as the exterior side-view mirror caps, side window frames, roof railings, and inscriptions on the tailgate bring more dynamism and emotion to the vehicle's appearance. The full LED Matrix

headlights and upgraded 20" Vega black alloy wheels come as standard. The look is completed by a black badge with Sportline lettering on the side.



## **Sporty elegance and comfort**

Dynamic looks, exclusive details, and quality materials are what makes the Sportline Design Selection unique. It includes front sports seats upholstered in Suedia artificial leather, leatherette dashboard pad with grey stitching, Carbon décor, and black headliner.



### Sportline interior

Leatherette pad with grey stitching  
Carbon décor  
Suedia/leatherette upholstery with grey stitching



### Design Selection Sportline

The sporty ambience aboard is created by the upholstery in a combination of grey Suedia artificial leather with leatherette. The Carbon décor and leatherette dashboard and door pads with contrasting grey stitching provide the perfect finishing touch.

Colours



Timiano Green uni



Moon White metallic



Brilliant Silver metallic



Steel Grey uni



Velvet Red metallic



Energy Blue uni



Race Blue metallic



Graphite Grey metallic



Black Magic metallic

\* Available only for RS

## Wheels



20" Vega black alloy wheels



20" Asterion black metallic alloy wheels



# Accessories

## Genuine Accessories that perfectly fit your car

It's the finishing touches that make a car truly yours. Tailor your Elroq to your taste and needs with Škoda Genuine Accessories and enjoy a bespoke experience.

Enhance the looks with a choice of wheels and design details like mirror caps or specific door sills. Give the interior a more upscale look with premium carpets or make it more rugged with all-weather mats.

There are also other ways to make your life easier. A plethora of holders, hooks, charging cables and smart ideas like door-mounted bins and entertainment packages for rear passengers will make your travels a real joy.

The safety of you and your passengers, big and small, as well as your four-legged friends, is always our first priority. That's why we offer not only a comprehensive range of child seats, but also seatbelts for your dogs.

Anything you need to take with you will find its secure place in the boot thanks to various clever features and ideas.

Make your Elroq just perfect for you.





#### Towbar rack

5E3 071 105 | LHD, for 2 bicycles  
000 071 105P | LHD, for 3 bicycles

## Space for all you need

On some trips, even the largest boot is not enough for everything you need. Škoda Genuine Accessories has a solution. You can mount a bicycle rack to your tow bar or use various sizes of roof boxes to transport larger items.



#### Roof box\*\*

57H 071 200 | 512 l\*  
3P0 071 200B | 400 l\*  
5L6 071 175 | 380 l

#### Transverse roof rack

5LJ 071 151

\* The roof box is accessible from both sides for comfortable loading and unloading of gear.

\*\* Ask your dealer for colour variations.



**Charging port cover**

5LA 054 410

**Charging set MODE 3**

5LA 054 412H

**Cleaner for charging cables**

5LA 096 150B



**Mud flaps**

5LJ 075 111 | front

5LJ 075 101 | rear



## Tailor-fitted experience

Create your own space to enjoy. You spend hours and hours inside your car and you deserve to enjoy that time. That's why we offer a wide range of accessories to tailor it to your individual taste and needs. Create a more premium look with Exclusive textile carpets and decorative strips or make it easier to clean up after the rain with rubber all-weather mats. The choice is yours.



### Textile foot mats: Exclusive

5LJ 061 270 | LHD  
5LJ 061 270A | RHD

### Decorative door sill strips

5LJ 071 303 | alluminium

### Textile foot mats: Standard

5LJ 061 404 | LHD  
5LJ 061 404A | RHD

### Decorative door sill strips

5LJ 071 303A | alluminium black

### All-weather foot mats

5LJ 061 500 | grey lettering, LHD  
5LJ 061 500A | grey lettering, RHD

### Protective door sill foils

5LA 071 310A | transparent, front  
5LA 071 310 | transparent, rear



**Never get bored**

Enjoy even the longest trips. With the Entertainment pack, you'll have your entertainment right in front of you with two multimedia holders. The Comfort pack adds Smart Holders, hangers, adapters and even a door panel bin, so you can turn the backseat into your living room sofa.

**Comfort pack**

000 061 122D

- Smart Holder – multimedia holder
- Smart Holder – hook
- Smart Holder – hanger
- Smart Holder – adapter
- Door panel bin (black)

**Entertainment pack**

000 061 122K

- Smart Holder – adapter (2 pcs)
- Smart Holder – multimedia holder (2 pcs)



**KIDFIX i-SIZE child seat**

(15–36 kg, 4-point seat belt)

000 019 906AG

**Protective pad under child seat**

000 019 819A

## Pampered and protected

Enjoy every minute of your family trip, knowing that your smallest passengers travel in the best possible comfort and safety. Our range of child seats covers kids ranging from newborns up to 36 kilograms and offers the latest safety features. Have a four-legged friend with you? We even offer seat belt for dogs. And you can also use seat belts to securely fasten our thermo-electric cooling and warming box, so no one on board ever goes hungry or thirsty.



**Thermo-electric cooling/warming box – 15 l**

5L0 065 400



#### Dog safety belt

000 019 409A | size S  
000 019 409B | size M  
000 019 409C | size L  
000 019 409D | size XL

#### Rear seat protection\*

3V0 061 680

\* The size of the rear seat protection can be adapted to cover just one half of the rear seats.



#### Boot side compartment

5LJ 061 104

#### Top Tether boot pocket

5LJ 061 100



**Universal fixing elements**

6V0 061 104

**Charging cable bag**

5LA 087 317B

**Double sided boot mat with hinge**

5LJ 061 163 | basic floor  
5LJ 061 163A | double floor

## Safe and organised

A spacious boot is even more useful when it's neatly organised. Stash the charging cables to the bag and fix luggage with fixing straps or elements. You can even place your food and drinks into a thermo-electric cooling box.



**Fixing boot strap**

3P0 071 790

**Thermo-electric cooling box – 20 l**

000 065 400G



### Net programme

5LJ 065 110 | black, basic floor



### Double-sided boot mat – crate\*

5LJ 061 163B | basic floor

5LJ 061 163C | double floor

\* Product can be folded as a crate, or unfolded as a double-sided boot mat. Folding and unfolding is possible on both (rubber or fabric) sides.



**Boot dish**

5LJ 061 162

**Sliding dividing element**

3V0 860 143A 9B9

**Aluminium partition for boot dish**

565 017 254



**Protective boot liner**

5LJ 061 160

Technical Data

Technical specifications	60	85
Engine		
Power (kW)	150	210
Torque (Nm)	310	545
Battery capacity (kWh) – gross	63	82
Battery capacity (kWh) – net	59	77
Performance		
Maximum speed (km/h)	160	180
Acceleration 0–100 km/h (s)	8.0	6.6
Range – WLTP (km)	394–430	542–581
Energy consumption WLTP (kWh/100 km) – combined	15.7–17.3	15.2–16.5
Drive type		
Drive	Rear-wheel drive	Rear-wheel drive
Charging		
AC (0–100%) – power/time (according to the type of cable)	11 kW/6 h 30 min	11 kW/8 h
DC (10–80%) – power/time	165 kW/24 min	175 kW/28 min
Weight		
Kerb weight – in standard version without driver (kg)	1,903–2,040	2,044–2,181
Payload – incl. driver and extra equipment (kg)	417–554	469–606

Further specifications

Body		Front brakes	Internally cooled disc brakes, single piston for the 50 and 60; two-piston for the 85 and RS
Type	5-seater, 5-door, 2-compartment	Rear brakes	Drum brakes
Chassis		Clearance (mm)	186 (for the 50, 60 and 85), 170 for the RS
Front axle	McPherson suspension with a sheet metal subframe and lower wishbones	Luggage storage space (max. l)	
Rear axle	Multilink axle, with five transverse arms, without a longitudinal arm	Without spare tyre, with rear seat backrests – upright/down	470/1,580

The maximum power is determined in accordance with UN-GTR.21. The maximum power is available when the high-voltage battery is at its highest possible state of charge (SoC) and operating within its optimal temperature range. The power available varies according to the driving scenario and is influenced by factors including the battery’s temperature, its SoC, and the physical ageing of the high-voltage battery.

WLTP – World harmonized light-duty vehicles test procedure.

Elroq



Specifications may differ depending on the battery version and chassis configuration.

#### **Image disclaimer**

The images presented in this catalogue (brochure) are used for illustrative purposes only and are not intended to form part of any contract or warranty. They display pre-series cars and certain illustrations, features, parts and equipment may differ from the actual production cars and from country to country. To get the exact specification of features, parts and equipment, please get in touch with your nearest local Škoda dealer.

If you've enjoyed reading  
about it — imagine driving it.  
**Call us to arrange  
a test drive!**



#### **Assembly manuals**

Follow the user manuals to install Škoda Genuine Accessories on your car correctly. You can also visit your authorised Škoda Service partner.