

PK 11.001 SLD 1 | PK 12.501 SLD 5

SINGLE LINK AND PERFECT POWER TO WEIGHT RATIO OFFER EFFICIENT LOAD HANDLING

LIFETIME EXCELLENCE



UNBEATABLE POWER-TO-WEIGHT-RATIO

- More lifting capacity thanks to E-HPLS
- High value retention due to coating technology
- Practical and attractive due to Functional Design
- Maximum reliability with PALTRONIC
- Higher payloads due to intelligent lightweight design





PERFECT TOOL WITH SOPHISTICATED KINEMATICS

9 Highlights



Knuckle joint on knuckle boom

More power on the hook

The knuckle joint significantly improves the crane's motion geometry.

High Speed Extension

For efficient assignments

The High Speed Extension speeds up the extension boom system. Crane works faster and more efficiently.



Coating technology

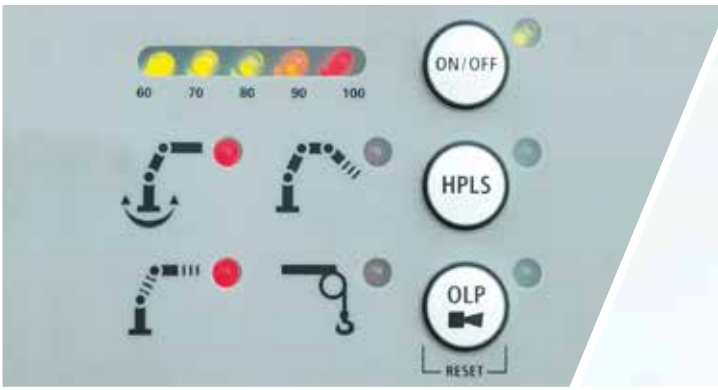
Top quality surface protection at a glance

The KTL coating lays the foundation for a perfect surface protection. Afterwards the components are either coated in the powder-coating facility or are finished with a two-components-topcoat. High value retention and excellent corrosion protection for the whole life of a crane.

HPSC*

Maximum utilisation of the working range

The variable stabiliser positioning of the High Performance Stability Control System allows the full lifting capacity of the crane to be used, even when working within tight spaces.



Paltronic*

Comfort and safety

The PALTRONIC, PALFINGER offers the latest control electronics for the series production crane. The custom designed electronic operates and monitors the crane and offers more efficiency in use and safety.



Radio remote control*

Dialogue with the operator

PALFINGER radio remote controls are equipped with linear lever or cross lever and provide the greatest possible comfort for the operator. All SLD 5 models with LED-Display inform the crane operator about the different operating conditions.



Hose equipment for attachments*

Enhances versatility

The hose equipment offers an easy means of connecting auxiliary equipment. The hose equipment is guided in hose trays for protection.



Lighting package*

More crane safety particularly at dusk and dark

LEDs which backlight the control panel make it easier to read off the crane functions and provide the crane operator with a quick overview of the entire panel during the working process. LED warning lights in the supporting cylinders mean greater safety for crane operator and passers-by.



Control console

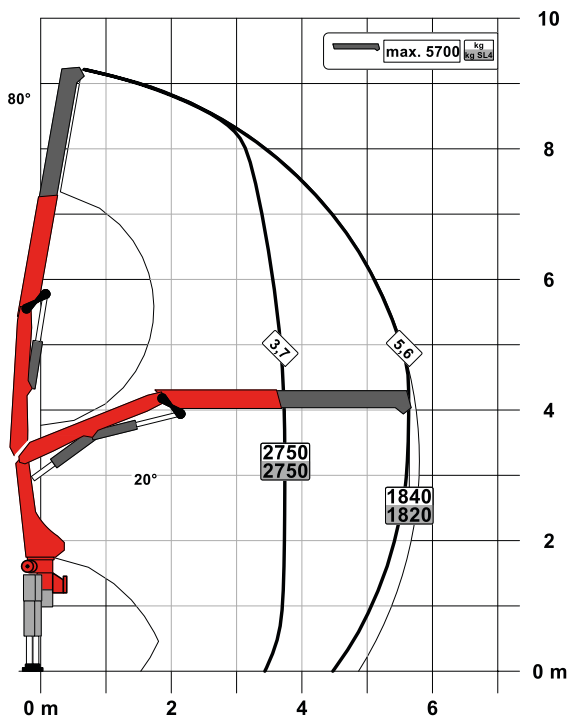
All information at a glance

All important information about the crane can be seen on the main control stand. A digital indicator counts and displays the operating hours. Ergonomic control levers and the optional lighting package provide increased safety and comfort even in poor visibility conditions.

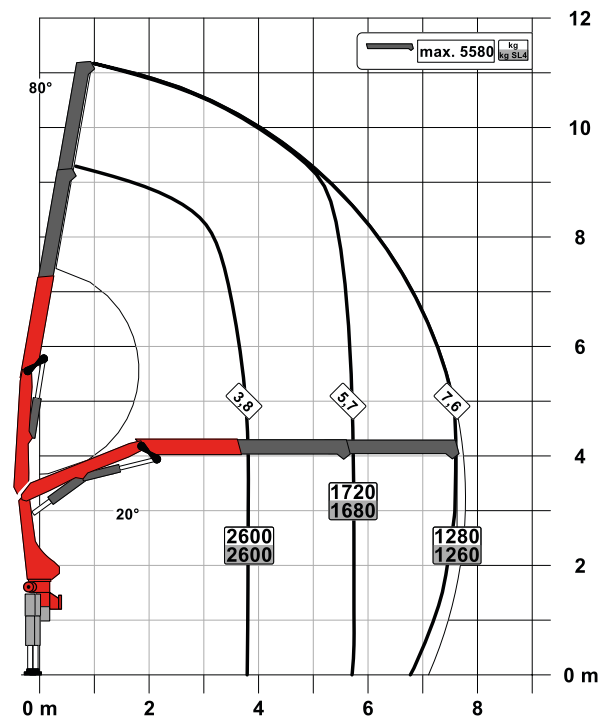
PK 11.001 SLD 1 (NON-CE)

PERFECT DIMENSIONS

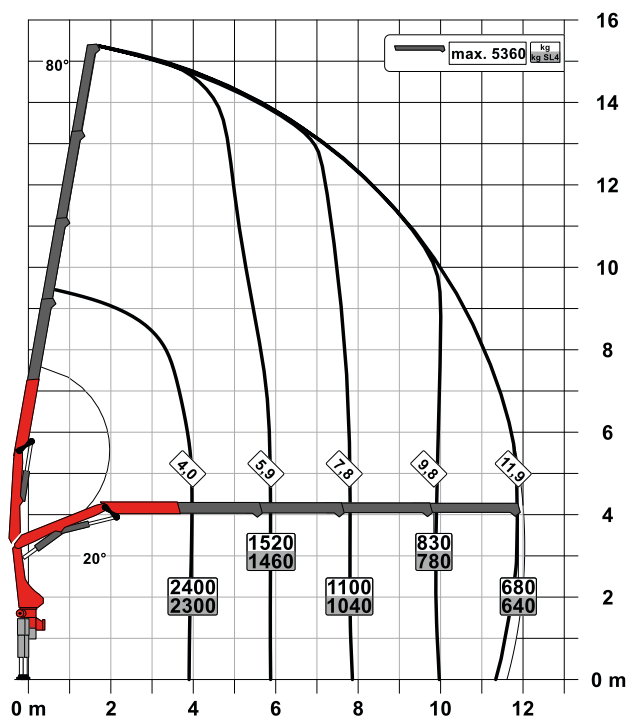
STD

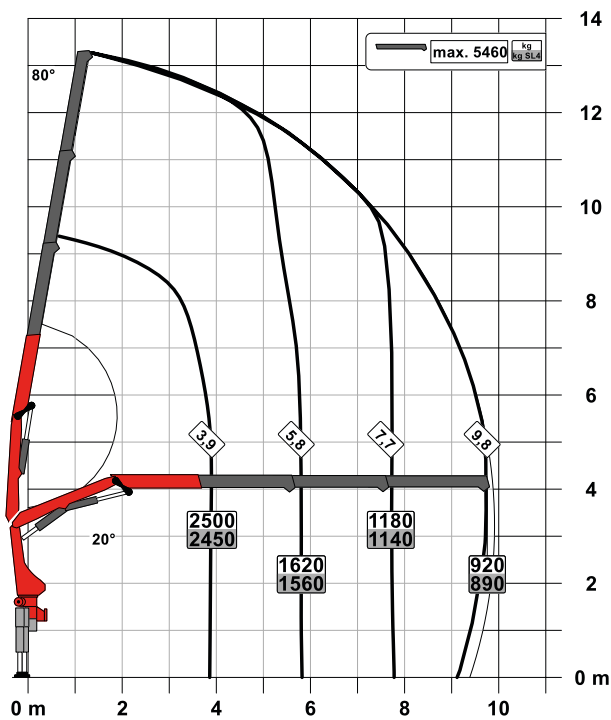


A



C



B

SLD 1 (NON-CE)

- Single Link
- Optional:
 - Overload protection OSK
 - Top seat control
 - High stand control
 - Radio remote control
- NON-CE model

Technical specifications

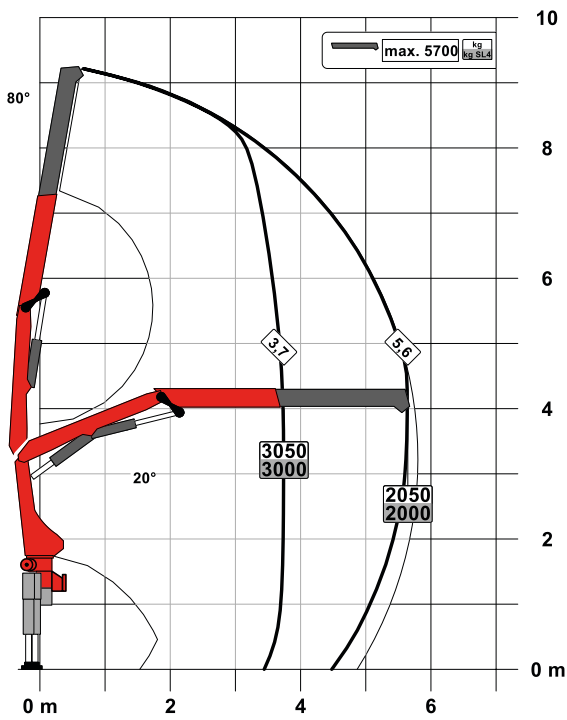
EN 12999 HC1 HD4/S2

Max. lifting moment	10.3 mt/101.4 kNm	74740 ft.lb
Max. lifting capacity	5700 kg/55.9 kN	12570 lb
Max. hydraulic outreach	12.0 m	39' 6"
Max. manual outreach	15.9 m	52' 2"
Slewing angle	400°	
Slewing torque	1.3 mt/12.7 kNm	9370 ft.lb
Stabiliser spread (std./max.)	3.3 m/ 5.6 m	10' 10"/ 18' 4"
Fitting space required (std.)	0.72 m	2' 4"
Width folded	2.32 m	7' 7"
Max. operating pressure	330 bar	4785 psi
Recommended pump capacity	from 30 l/min to 45 l/min	7.9 US gpm 11.9 US gpm
Dead weight (std.)	1140 kg	2510 lb

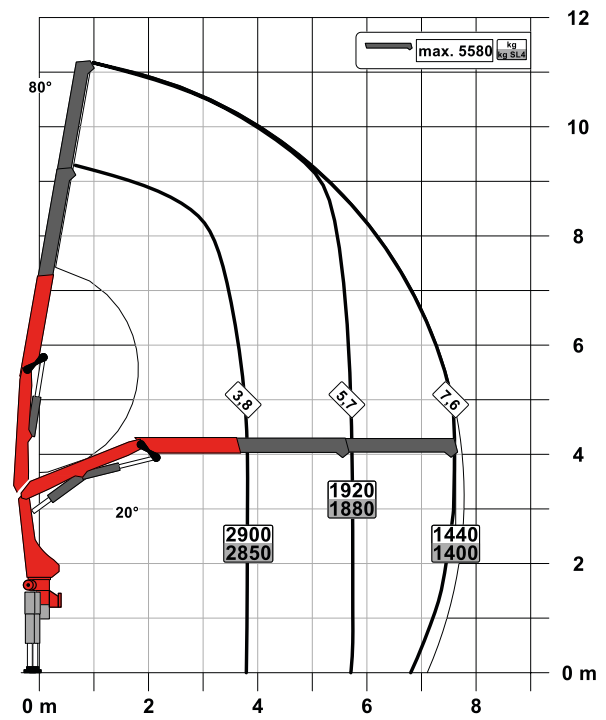
PK 12.501 SLD 5

PERFECT DIMENSIONS

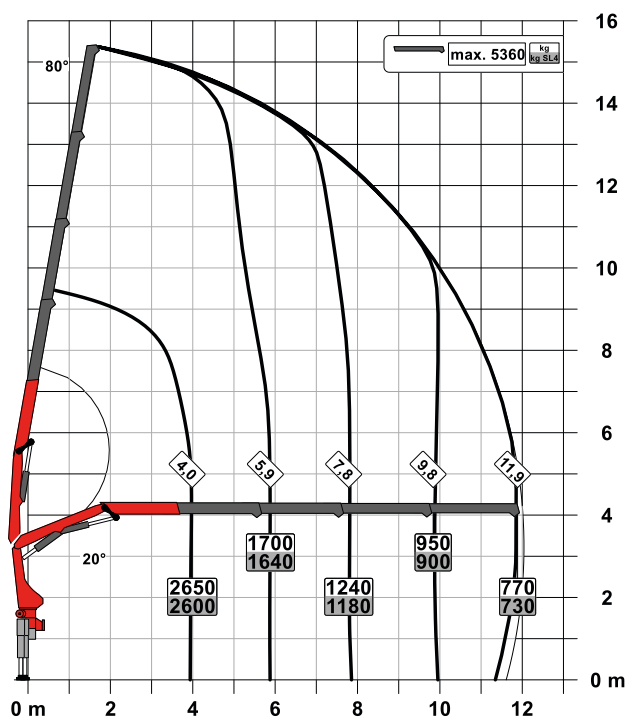
STD

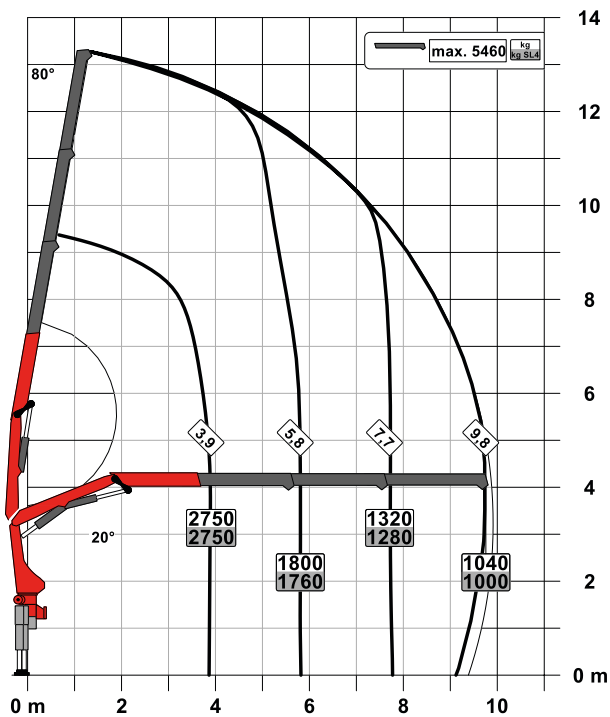


A



C



B

SLD 5

- Single Link
- Paltronic overload protection
- E-HPLS
- Load Sensing valve
- Radio remote control with LED display
- Optional:
 - Stability monitoring system ISC-S (standard for CE), HPSC-L, HPSC-E
 - Rope winch 1.5t on the knuckle boom
- NON-CE and CE model

Technical specifications

EN 12999 HC1 HD4/S2

Max. lifting moment	11.4 mt/112.2 kNm	82160 ft.lb
Max. lifting capacity	5700 kg/55.9 kN	12570 lb
Max. hydraulic outreach	12.0 m	39' 6"
Max. manual outreach	15.9 m	52' 2"
Slewing angle	400°	
Slewing torque	1.3 mt/12.7 kNm	9370 ft.lb
Stabiliser spread (std./max.)	3.3 m/5.6 m	10' 10"/18' 4"
Fitting space required (std.)	0.72 m	2' 4"
Width folded	2.32 m	7' 7"
Max. operating pressure	360 bar	5220 psi
Recommended pump capacity	from 45 l/min to 60 l/min	11.9 US gpm to 15.9 US gpm
Dead weight (std.)	1170 kg	2580 lb

KP-PK11/12SLDM3+EN

Cranes shown in the leaflet are partially optional equipped and do not always correspond to the standard version. Country-specific regulations must be observed. Dimensions may vary. Subject to technical changes, errors and translation mistakes.