



SUSPENSION ACCESSORIES CAMPING



SHOCK ABSORBER SELECTION

IRONMAN 4X4 OFFER THREE RANGES OF SHOCK ABSORBERS. EACH RANGE IS AVAILABLE IN EITHER SOFT COMFORT, MEDIUM OR PROFESSIONAL VALVING.



GRC
NITRO GAS COMFORT

GR
NITRO GAS

GRP
NITRO GAS PROFESSIONAL

NITRO GAS SHOCK ABSORBER

Highly versatile performance upgrade from original shock absorbers.

- 35mm piston
- 54mm body
- 16mm piston rod
- Nitrogen gas pressurised
- Twin tube construction



FEC
FOAM CELL COMFORT

FE
FOAM CELL

FEP
FOAM CELL PRO PROFESSIONAL

FOAM CELL SHOCK ABSORBER

Larger size and capacity suitable for all conditions.

- 40mm piston
- 60mm body
- 18mm piston rod
- Foam cell technology
- Twin tube construction



FEC PRO
FOAM CELL PRO COMFORT

FE PRO
FOAM CELL PRO

FEP PRO
FOAM CELL PRO PROFESSIONAL

FOAM CELL PRO SHOCK ABSORBER

Maximum size and most robust design suitable for all conditions.

- 45mm piston
- 65-72mm body
- 20mm piston rod
- Foam cell technology
- Twin tube construction



SUSPENSION KIT TYPES



LEAF / LEAF (LL)



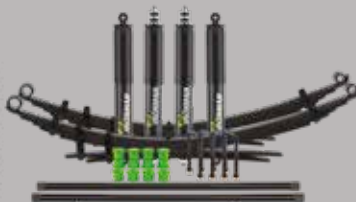
COIL / COIL (CC)



STRUT / LEAF (SL)



STRUT / COIL (SC)



TORSION BAR /
LEAF (TL)



TORSION BAR /
COIL (TC)

Please note: Not all coil springs are available in green and some may be supplied in yellow. Please check before ordering.

TO SUIT MAKE AND MODEL	Type	Nitro Gas Kit	Foam Cell Kit	Foam Cell Pro Kit	TO SUIT MAKE AND MODEL	Type	Nitro Gas Kit	Foam Cell Kit	Foam Cell Pro Kit
TO SUIT FORD					GU/GU Cab Chassis (Coil)	CC	\$1060	\$1320	\$1634
Everest 2015+	SC	\$1216	\$1400	\$1818	GU Cab Chassis Y61 (Coil/Leaf)	CL	\$1949	\$2209	\$2523
Ranger 2011+	SL	\$1922	\$2105	\$2523	GQ SWB/LWB	CC	\$1047	\$1307	\$1622
Ranger 2006-2011	TL	\$1831	\$2092	\$2405	GQ Cab Chassis Y60 (Leaf)	LL	\$2614	\$2876	\$3189
TO SUIT HOLDEN					TO SUIT SSANGYONG				
Colorado 2012+	SL	\$1949	\$2130	\$2549	Rexton	SC	\$942		
Colorado 2003-2012	TL	\$1831	\$2092		Musso	SL	\$1883		
Colorado 7 / Trailblazer	SC	\$1177	\$1360	\$1778	TO SUIT SUZUKI				
Jackaroo UBS 25 & 69	TC	\$1203	\$1465		Sierra LJ, SJ	LL	\$1752		
Rodeo KB, TFS, RA, RA7	TL	\$1831	\$2092		Vitara / Grand Vitara	SC	\$1256		
TO SUIT ISUZU					Jimmy GJ 2018+	CC	\$1256		
D-Max 2020+	SL	\$1949	\$2131	\$2549	Jimmy 1998-2018	CC	\$1047		
D-Max 2012-2020	SL	\$1949	\$2131	\$2549	TO SUIT TOYOTA				
D-Max 2003-2012	TL	\$1831	\$2092		To Suit 4Runner Gen 3/4/5	TL	\$1177	\$1360	\$1778
MU-X	SC	\$1177	\$1360	\$1778	To Suit 4Runner LN 61/YN63 Gen 1	TL	\$1818	\$2078	
TO SUIT JEEP					To Suit FJ Cruiser	SC	\$1177	\$1360	\$1909
Grand Cherokee WG, WJ, ZG, ZJ	CC	\$1047			To Suit Hiace 2005+	TL	\$1883		
Cherokee Liberty KJ	SC	\$1177			To Suit Hilux				
Cherokee XJ	CL	\$1804	\$2066		2015+	SL	\$1856	\$2040	\$2589
Wrangler JL	CC	\$1047		\$1622	2005-2015	SL	\$1804	\$1987	\$2497
Wrangler JK	CC	\$1047		\$1622	LN/RN 107,110,111,167, SR5	TL	\$1831	\$2092	
Wrangler TJ	CC	\$1047			LN/RN/YN 65, 105, 106	LL	\$1961	\$2222	
TO SUIT LANDROVER					LN/RN/YN/VZN 130 V6 Gen 2	TC	\$1203	\$1465	
Defender County / Dual Cab	CC	\$1047	\$1210	\$1501	To Suit Fortuner 2015+	SC	\$1324	\$1386	\$1935
Range Rover/Discovery	CC	\$1047	\$1307	\$1622	To Suit Landcruiser				
TO SUIT MAZDA					VDJ/UZJ 200	SC	\$1242	\$1425	\$1791
BT50 2020	SL	\$1922	\$2105	\$2523	HDJ/UZJ 100 IFS	TC	\$1320	\$1582	\$1896
BT50 2011-2020	SL	\$1922	\$2105	\$2523	HJ/HZJ 80, 105	CC	\$1047	\$1307	\$1622
BT50 2006-2011	TL	\$1831	\$2092	\$2405	Dual Cab 79	CL	\$2144	\$2405	\$2720
TO SUIT MERCEDES BENZ					HZJ 78/79	CL	\$2066	\$2327	\$2640
G-Wagen	CC	\$1125	\$1386		HZJ 76	CL	\$2066	\$2327	\$2640
G-Wagen G55	CC		\$1386		FJ/HJ/HZJ 75	LL	\$2562	\$2824	\$3138
X-Class	SC	\$1269	\$1451	\$1869	To Suit Prado 90, 95	SC	\$1177	\$1360	\$1778
TO SUIT MITSUBISHI					To Suit Prado 120,150	SC	\$1177	\$1360	\$1909
Challenger PB/Pajero Sport 2015+	SC	\$1177	\$1360		To Suit Tundra 2007+	SL		\$2314	\$2680
Delica, L400	TC	\$1203			TO SUIT VOLKSWAGEN				
Pajero NM - NX	SC	\$1177			Amarok	SL	\$1804		
Pajero NH/NL (Coil)	TC	\$1203	\$1465		TO SUIT OTHER MODELS				
L200/Triton ME - MK	TL	\$1831	\$2092		Haval H9	SC	\$1177	\$1360	
Triton ML - MN	SL	\$1804	\$1987		Hyundai Terracan	TC	\$1261		
Triton MQ - MR	SL	\$1961	\$2144		JMC Vigus	SL	\$1804	\$1987	\$2405
TO SUIT NISSAN					LDV T60	SL	\$1974	\$2158	\$2576
Navara NP300 (Coil)	SC	\$1269	\$1451	\$1869	Mahindra Pik-Up	TL	\$1818		
Navara D40 / NP300 (Leaf)	SL	\$1804	\$1987	\$2405	Mahindra Scorpio Wagon	TC	\$1216		
Navara D22	TL	\$1831			SsangYong Musso Q200 / Q201	SC	\$1177		
Pathfinder R51	SC	\$1177	\$1360		SsangYong Musso 1996-2006	TC	\$1360	\$1622	
Y62 Patrol	SC	\$1216	\$1400	\$1818					
GU Y61 Wagon	CC	\$1060	\$1320	\$1634					

ACHIEVE UP TO 50MM LIFT DEPENDING ON MODEL



AUSTRALIAN CERTIFIED GVM SUSPENSION UPGRADES

Designed and tested for contractors and tradesmen carrying tools or equipment exceeding original vehicle manufacturer or legal load limits, or for off-roaders fitting a bull bar, winch or long range fuel tank yet still retain load carrying capacity.

The Ironman 4x4 GVM Upgrade will assist in satisfying OH&S, insurance and road transport regulation requirements. Ironman 4x4 has conducted all required testing to ensure complete integration with all safety systems and requirements as well as compliance to Federal laws.

LEGALLY CARRY MORE PAYLOAD



IRONMAN 4X4 GVM SUSPENSION UPGRADES

To Suit

Ford Ranger PXI / PXII / PXIII



**+300kg Payload
= 3500kg GVM**

(CPA47511)

From \$3260

To Suit

Holden RG Colorado



**+600kg Payload
= 3500kg GVM**

From \$3312

To Suit

Isuzu D-Max 2012+



**+550kg Payload
= 3500kg GVM**

(CPA49748)
(CPA51296)

From \$3312

To Suit

Toyota Hilux 2005 - 2015



**+500kg Payload
= 3350kg GVM**

(CPA44780)

From \$3138

To Suit

Toyota Hilux 2015+



**+510kg Payload
= 3500kg GVM**

(CPA48310)

From \$3221

To Suit

Toyota Landcruiser 200 Series



**+700kg Payload
= 4000kg GVM**

From \$2859

To Suit

Suzuki Jimny 2018+



**+350kg Payload
= 1785kg GVM**

From \$2476

To Suit

Toyota Landcruiser 78/79 Series



**+600kg Payload
= 3900kg GVM**

(CPA45466)

From \$3869

**KEEP IT
LEGAL
KEEP IT
SAFE**

Prices quoted are excluding installation and engineering sign off fee (post registration only)

Installation is only available at an Authorised Ironman 4x4 facility and is subject to state compliance

All prices quoted do not include freight or fitting. Prices quoted are subject to change without notice. Some products may vary depending on vehicle model.



SUSPENSION ALIGNMENT PRODUCTS



UPPER CONTROL ARMS

- Optimise wheel alignment at raised ride height
- More clearance for larger tyres and increased lift
- Drop forged alloy construction
- High strength and durable



\$131 per set

SWAY BAR MOUNT KITS

- Stronger than OEM construction
- Stylish anodised billet aluminium design

ADJUSTABLE TRAILING ARMS

To suit Toyota Landcruiser and Nissan Patrol

- Comp spec solid 32mm
- On car adjustable
- Rubber bushes



UPPER **\$196 ea**

LOWER **\$248 ea**



\$832 per pair

ADJUSTABLE STEERING RODS

- Adjustable length rod to centralise steering wheel after suspension lift

from \$392



CASTER WEDGE KITS

- Adjusts caster and pinion angle in leaf sprung vehicles

\$52.00



ADJUSTABLE PANHARD ROD

- Used to correct axle shift after raising suspension
- Adjustable to re-centralise axle to vehicle



from \$300

Load Plus

LOAD PLUS

Helper Spring Kit

- Progressive and adjustable
- Maximises vehicle payload
- Improves safety and stability
- Economical leaf spring upgrade
- Ideal for light commercial vehicles, 4x4's, utes and vans
- DIY installation



\$157 per set





STRUT ASSEMBLIES

- Pre-assembled to reduce installation time
- No spring compressor required
- Ideal for home installation or busy workshops

from \$929 per set



COIL SPRINGS

from \$235 per set



ADD-A-LEAF

Ironman 4x4 Add-a-Leaf is a simple, cost effective addition to boost your existing leaf springs

- Maximises vehicle payload
- Improves handling and comfort
- Increases ride height

\$157 per set



LEAF SPRINGS

from \$379 per set



Please note: Not all coil springs are available in green and some may be supplied in yellow. Please check before ordering.

All prices quoted do not include freight or fitting. Prices quoted are subject to change without notice. Some products may vary depending on vehicle model.



LED INSTANT AWNING

- Premium 280gsm Ripstop
- UV50+ rated poly cotton canvas
- Twist lock poles
- Integrated LED light
- Reflective guy ropes
- 1000D PVC cover



AWNING SIZES:

1.4m L x 2.0m Out

\$253

2.0m L x 2.5m Out

\$279

2.5m L x 2.5m Out

\$304



Flexible Nylon Joints



Ripstop Canvas



Reflective Guy Ropes



Light Strip Dimmer

AWNING ROOM WITH INSECT NETTING

GET THE BEST OF BOTH WORLDS

- An all in one room with insect netting
- Integrated ceiling and zip away PE floor for easy cleaning
- Attaches via any standard sail track, fastening in place via a zip and heavy duty clips
- Integrated external entry mat, insect protection mesh windows and the option of a verandah on each entry with the use of additional poles and guy ropes
- High performance 300D water resistant Ripstop polyester fabric and seam sealed stitching

2.0m L x 2.5m Out **\$294** 2.5m L x 2.5m Out **\$325**

AWNING QUICK RELEASE BRACKET

DESIGN REGISTERED AND MADE IN AUSTRALIA

- Allows you to set up camp and drive away, leaving your awning free standing
- Easily swap awning to a different vehicle
- Allows you to store awning off the vehicle when not in use
- Can be used to mount other accessories, such as tradesman tools
- The extra hook kit allows you to mount your awning for use at home as a shelter over a BBQ area, over the kids play area etc, making your awning multi use
- Fits Ironman 4x4 and most other awnings
- Can be padlocked on for security
- Rated up to 35kg



Quick Release Bracket

\$140 twin pk

Hook Kit

\$67 twin pk

AWNING XTRA

A CONVENIENT ALCOVE

- Built from 280gsm Ripstop poly cotton
- Attaches via any standard sail track
- Gusseted heavy duty clips
- Gusseted eyelets
- UV50+ rated

2.0m L x 1.4m Out **\$155**

2.5m L x 1.4m Out **\$181**



All prices quoted do not include freight or fitting. Prices quoted are subject to change without notice. Some products may vary depending on vehicle model.



\$1441



**10 MIN
SET UP**

LUXURY ROOFTOP TENT

- Premium 280gsm Ripstop poly cotton canvas, waterproof and breathable
- "Climate cover" flysheet controls temperature and reduces condensation
- All openings with insect mesh and internal covers
- 65mm high density luxury foam mattress
- Heavy duty 1000D waterproof transport cover
- Lightweight aluminium and insulated floor
- 1.4m wide x 2.4m long x 1.3m high (Int.dimensions)
- Heavy duty YKK zips



Comes complete with all tools and step by step instructions required for easy installation

**32L
CAPACITY**

\$38



ROOF TENT BAG

- 1000D waterproof PVC with heavy duty stitching and YKK zips
- Attach and use via any sail track
- Off ground storage



\$346

ANNEX (sold separately)

- Easily zips onto the main tent
- 1000D waterproof PVC built-in removable floor
- All openings with insect netting mesh and internal covers
- Extension kit available

WATER TANKS

- UV stabilised polyethylene (LLDPE)
- BPA Free, and FDA approved



Hand Wash not included

- | | | | |
|----------|---|----------|--|
| 1 | 40L VERTICAL TANK
1100 W x 75 D x 720mm H* | 6 | 60L TANK
845 W x 360 D x 270mm H* |
| 2 | 50L WHEEL ARCH TANK
1215 W x 120 D x 590mm H* | 7 | 50L ROOF RACK TANK
1200 W x 600 D x 120mm H* |
| 3 | 50L TAPERED TANK
1000 W x 200 D x 390mm H* | 8 | CLEAR TANK HOSE
1500mm L with Tap |
| 4 | 40L DOUBLE JERRY CAN
335 W x 465 D x 340mm H* | 9 | 15L UNDER TRAY TANK
345 W x 255 D x 305mm H |
| 5 | 20L JERRY CAN
170 W x 350 D x 460mm H* | | |

*Includes height of screw cap



FIRST AID KITS

Innovative fold out pouch system types of injuries, including:

- Small, medium and large wounds
- Burns
- Snake bite kit
- Sprains and fractures
- CPR

Ideal in a range of environments including home, work, car or 4WD, camping, caravan or boat



All prices quoted do not include freight or fitting. Prices quoted are subject to change without notice. Some products may vary depending on vehicle model.



DELUXE SOFT ARM CHAIR

- Soft durable arms with high strength steel frame
- Integrated drink holder and insulated pocket in arm
- Handy side utility pocket

\$73



DELUXE LOUNGE CAMP CHAIR

- With extra comfort padding
- Integrated drink holder pocket
- Wide design

\$97



\$86



DELUXE HARD ARM CHAIR

- Rear locking tabs lock chair open or closed
- Strong and durable solid arms with high strength steel frame
- Integrated side drink holder

MID SIZED LOW BACK CAMP CHAIR

- Compact design
- Ideal for festivals and juniors

\$49



-5° SWAG BAG

- Large sizing: 235cm (L) x 100cm (W)
- 300gsm cotton canvas
- - 5°C temperature comfort rating
- Dual layer 360gsm lofty hollow fibre with baffles
- Zip 2 bags together to make double sized sleeping bag
- Includes duffle carry bag



\$168



SWAGS

- High performance 320gsm Ripstop canvas with insect mesh protection
- Lightweight alloy poles
- 70mm high density mattress
- Internal storage pockets/ external shoe
- Includes heavy duty carry bag



SINGLE
900 x 2100mm

\$405

DOUBLE
1350 x 2100mm

\$459

MALLET, AXE AND AXE/SPLITTER

- Forged carbon steel heads
- Multi-core fiberglass and PVC moulded handle
- Moulded rubber grip for added comfort



\$20.00
TENT PEG MALLET
- Weight: 0.9kg



\$23.00

AXE
- Weight: 0.7kg



\$75.00

AXE / SPLITTER
- Weight: (head) 2.0kg



3 PIECE SHOVEL

- Reinforced cushioned PVC handle
- CNC machined joining threads
- Hardened steel post hole blade
- Long shovel / short handled spade
- Tough storage bag

\$162



Ice cube

FRIDGE / FREEZER

30L, 40L AND 50L



Spring Loaded Handle



3 Internal LED Lights



Front and Top Display



50L
CAPACITY

\$925

40L
CAPACITY

\$840

30L
CAPACITY

\$765

FRIDGES / FREEZERS

SECOP COMPRESSOR (FORMERLY DANFOSS)

- Digital control panel
- Super bright internal LED light
- Three stage battery protection
- High efficiency, low current draw
- Max and economy modes
- Multi-voltage DC 12-24v and AC 100-240v



74L
CAPACITY

\$1260

LARGE CAPACITY



65L
CAPACITY

\$1365

DUAL COMPARTMENT
DUAL CONTROL



FRIDGE BAGS

- Extra insulation
- Side pockets

30/40L

50L

65/74L

\$103 \$108 \$135

FRIDGE SLIDES

- 100kg rating
- Lock in and lock out slide
- Includes four tie down straps

30/40 AND 50L

\$270

65/74L

\$373



WIRELESS LCD FRIDGE THERMOMETER

- Displays internal and ambient temperatures wirelessly
- Up to 50m transmission

\$31

FRIDGE STRAPS

- Lashing capacity of 75kg
- Four straps



\$31



\$55

FRIDGE STAND

- Aluminium frame
- 100kg weight capacity
- Adjustable height
- Non slip rubber
- Adjustable, levelling feet



LED TENT LIGHT

- Batteries last up to 30 hours at full charge
- 24 x premium white LED's

\$16



\$54

12V LED LIGHT STRIP

- 1.2m LED light strip
- 3m wire with 12V plug and switch
- 12V socket with battery clips

LED LIGHT DIMMER

- Adjust brightness of LED light strips



\$19

AWNING 12V LED LIGHT STRIP AND DIMMER SET

- 1.2m LED light strip
- 3m wire with 12V plug and switch
- Attaches via sail track
- Dimmable
- IP68 rated

\$56



MINI LED LANTERN

- Use as a lantern or a torch
- 2 brightness settings, as well as an S.O.S flashing function
- 80m beam distance with CREE LED's



\$44

LED SENSOR HEADLAMP

- 220 lumens with CREE LED's
- Manual or sensor operation
- 120m beam distance



\$37

LED LANTERN

- 80m beam distance with bright white CREE LED's
- Multi-function: White light, red light and small LED's
- Includes a flashing S.O.S operation on both white and red lights



320 LUMENS

\$37



LED AREA LIGHT

- 12V DC power input
- Aluminium adjustable extension pole (Maximum height 3m)
- Wireless control with dimmer function (Range 10m)
- Ground mounting stake
- Storage bag included

**3500
LUMENS**

\$119

MINI LED LANTERN

- Swivel light operation to make a torch or lantern
- Max 180 lumens
- High or low light

\$42

**420
LUMENS**

\$71

LED WORK LIGHT COMBO (SET OF 2 WORK LIGHTS)

FEATURES OF BOTH LIGHTS:

- Magnet for positioning light in work area
- 2 x brightness options, plus a torch function
- Batteries included

FEATURES OF LARGER LIGHT:

- USB rechargeable work light

**80
LUMENS**

**100
LUMENS**

\$39

RECHARGEABLE TENT FAN / LED LIGHT

- Dual speed fan and twin setting LED light
- Up to 16 hours fan speed runtime
- Up to 40 hours runtime LED light
- Soft foam, child safe fan blades
- USB recharging point / USB output hub on rear

UNIVERSAL SEAT COVERS

- 100% Nylon universal fit
- Resists mud/grease/water
- Washable

\$29



- Easy to clean, removable lid and seat
- Easy to use, hand pump flush
- 12L fresh water storage
- 12L / 20L waste tank
- Double sealed drain valve, prevents leaks and odours
- Self contained toilet with no external connections

FLUSH AID

\$24



EZY-GO TOILET



**12L
CAPACITY**

\$161



\$114

BUSH TOILET BAGS

- Bio-degradable replacement bags



\$14

BUSH TOILET

- Compact design, folds flat
- Galvanised rust-proof steel
- Supports up to 200kg
- Includes carry bag

EXPLORER DUFFLE BAG

- 1000D waterproof PVC with side compression straps
- Internal mesh zipper pocket
- Top handles

\$83



**65L
CAPACITY**

**50L
CAPACITY**



\$39

TOURING CARGO BAG

- Heavy duty, waterproof polyester
- Top and side carry handles
- Duraflex® buckles



SOLAR MAT PANEL KIT

- A Grade Monocrystalline Cell
- Shingle cell construction
- Charge regulator with 8 battery type function
- Plug and Play with 50A Anderson Plugs
- Built-in stands for setup flexibility
- Heavy duty carry bag included
- 3 Year Warranty

120W **\$649**
1430 x 475 x 4mm (Open)

200W **\$849**
2150 x 575 x 4mm (Open)



MULTI-PURPOSE WHEEL CARRIER BAG

- Made super strong from 1000D PVC with drain holes for easy cleaning
- Reinforced 50mm webbing straps

\$90



55L
CAPACITY

ECO PRESSURE SHOWER



\$95



12L
CAPACITY

- Holds stable water pressure for up to 6 mins
- Water temperatures up to 50°C
- Foot pump creates water pressure
- Compact pack flat design

QUICK-FOLD CAMPING STEPS

- Non slip glow in the dark treads
- Quick-click double locking legs
- Can be used as entry mat

\$60



HAND CLEANER

- Use with or without water
- Soap free and Ph balanced
- Removes dirt, grease, grime, oil and ink.

\$13





UNDERBODY UBP SERIES PROTECTION

THE PREMIUM UNDERBODY PROTECTION SOLUTION TO SAFEGUARD
AGAINST OFF-ROAD DAMAGE FROM ROCKS, STUMPS AND GROUND STRIKES



**Starting from
\$276**

- 4mm fabricated steel
- 3 x more area coverage
- Anti-corrosion coating
- Textured black powdercoated finish
- Airflow ventilation
- Service inspection holes



UNDERBODY UBP SERIES PROTECTION

- 2.5-3mm pressed and folded steel
- Easy bolt-on installation
- Semi gloss black powdercoated finish

LONG RANGE FUEL TANKS

- 5-Day pressure tested
- 2mm Aluminised steel
- Internal baffles
- Black powdercoated finish



**Kits start from
\$220**



\$1129

**SALES & FITTING
AUSTRALIA WIDE**



RECOVERY KITS

LARGE KIT

- 3m x 12000kg tree trunk protector
- 20m x 4500kg winch extension
- 9m x 8000kg snatch strap
- 2 x 4.7t bow shackles
- Snatch block
- Leather gloves
- Kit bag

\$358



\$164

SMALL KIT

- 9m x 8000kg snatch strap
- 2 x 4.7t bow shackles
- Leather gloves
- Kit bag





RECOVERY STRAPS

TREE TRUNK
PROTECTOR



12000kg
BREAK STRENGTH

\$53

4500kg
BREAK STRENGTH

WINCH
EXTENSION STRAP

\$87

\$76

\$116

8000kg
BREAK STRENGTH

11000kg
BREAK STRENGTH

SNATCH STRAPS



9500kg
BREAK STRENGTH

\$182

KINETIC SNATCH ROPE

- Designed to stretch up to 30% providing a safer recovery by reducing shock load
- Manufactured with a high strength nylon 66 (polyamide) double braid cover and abrasion resistant core
- Storage bag included

SOFT SHACKLES

- A safer, lightweight, simple to use alternative to steel shackles
- Manufactured from; high strength, low friction, 12 strand single braid, UHMWPE rope
- Storage bag included



14000kg
BREAK STRENGTH

\$50

17500kg
BREAK STRENGTH

\$61



\$273

TOTAL TRACTION BY TREADS

- Ultimate recovery traction aide
- Manufactured in Australia



\$476

SYNTHETIC WINCH ROPE
9.5mm x 27m



\$65

SNATCH BLOCK

4WD
LIFT JACK

IRONMAN 4x4
1050kg
LIFTING CAPACITY



48"

60"

\$178

\$202



\$98

DRAG CHAIN



\$65

RECOVERY HITCH



\$17

4.7T BOW SHACKLE



\$35

BUMPER LIFT KIT



\$79

TYRE LIFT KIT



\$14

LEATHER GLOVES

RECOVERY HOOK

\$25



\$82



ALLOY HAWSE



160L/MIN COMPRESSOR



\$220

- 12V, 540W motor with 60mm cylinder
- 45A maximum current
- Snap-on quick release fitting
- 8m heat resistant, heavy duty hose with inline pressure gauge/deflator
- Moisture and dust resistant



90L/MIN COMPRESSOR



\$165

- 12V, 450W motor with 45mm cylinder
- 40A maximum current
- Snap-on quick release fitting
- 8m heat resistant, heavy duty hose with inline pressure gauge/deflator
- Moisture and dust resistant



\$39

PRESSURE GAUGE

- Reading hold function



SMART DEFLATOR WITH GAUGE

- Quick connect with pressure gauge

\$66

DUAL INFLATOR

- Inflate 2 x tyres at once
- Extension hose \$33.00



\$94

COMPACT DEFLATOR

- Quick connect speedy deflator



\$39

SPEEDY DEFLATOR

- USA Patented
- Accurate and easy to read pressure gauge
- Corrosion resistant

\$83



TYRE GAUGE

- Accurate pressure gauge
- Holds pressure when removed

\$29



TYRE REPAIR KIT

\$79

- Emergency puncture repair
- No need to remove tyre
- Quick and easy to use

\$19

Self-Vulcanising
Repair Cords

UNIVERSAL DIFF BREATHER KIT

SUITABLE FOR DIFF HOUSINGS, TRANSFER CASES, GEAR BOXES AND WINCH MOTORS

KIT CONTAINS:

- Twin breather manifold with brass filters and hose barbs
- 2 x barb fittings
- 10m oil resistant hose
- 4 x stainless steel hose clamps
- 2 x self drilling screws
- Cable ties

\$114



HIGH VIS FLAG X

- Quick disconnect
- 300mm x 290mm Flag
- Meets Australian safety flag requirements
- 3 x 1m rods, can be used at 1m, 2m or 3m lengths

\$150

All prices quoted do not include freight or fitting. Prices quoted are subject to change without notice. Some products may vary depending on vehicle model.



BULL BARS

AUSTRALIAN DESIGNED AND ENGINEERED

- Airbag compatible
- Compatible with vehicle safety systems
- ADR certified and tested
- Designed using 3D scan technology
- Made from highest quality SPHC grade steel (except premium alloy bull bar)
- CNC laser cut and robot welded
- Powdercoated with AKZO NOBEL powder
- LED parker / indicator included
- Aerial and light mounts
- Winch compatible

COMMERCIAL 50mm loop bar

From \$1503



COMMERCIAL DELUXE 50mm loop bar with fog lights

From \$1985



PROTECTOR

75mm inner and 50mm outer loop bars

From \$1997



PROGUARD NO LOOP Single or triple loops available

From \$1640



\$109 pair

LED FOG LIGHT UPGRADE

SUIT IRONMAN 4X4 BULL BAR LIGHT PODS

- 2 x 5W high efficiency LEDs
- IP69 rated sealed housing
- Shatterproof polycarbonate lens
- ECE R19 compliance

PROGUARD SINGLE LOOP
includes overrides

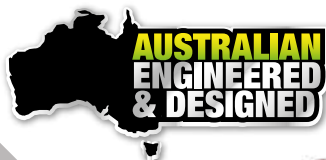
\$281



PROGUARD TRIPLE LOOP
includes overrides

\$357





Bull bar pricing does not include colour coding



PREMIUM DELUXE
60.3mm loop bar with fog lights

From \$2098



PREMIUM ALLOY
75mm inner and 50mm outer loop bars

From \$2247

IRONMAN 4x4

RATED RECOVERY POINTS



- Supplied as a pair and includes mounting hardware
- Compatible with 4.7T shackle

TO SUIT:

\$300 Ford Ranger / Everest
Mazda BT50 2011+

\$286 Holden Colorado 2012+
Isuzu D-Max 2012+

\$350 Holden Colorado 2016+

\$286 Isuzu MU-X 2014+
Holden Colorado 7 / Trailblazer 2012+

\$200 Nissan NP300 / D40 Navara 2005+

\$265 Mitsubishi MQ Triton 2015 - 2018

\$300 Mitsubishi MR Triton / Pajero Sport

\$200 To Suit Toyota Hilux / Fortuner 2015+

\$300 To Suit Toyota Prado 150 2009+

\$216 To Suit Toyota Landcruiser 79 2007+

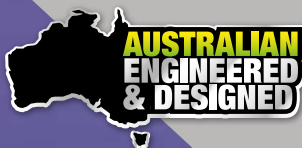
\$200 To Suit Toyota Landcruiser 200 2007+

All prices quoted do not include freight or fitting. Prices quoted are subject to change without notice. Some products may vary depending on vehicle model.



MONSTER WINCH

- Designed to fit most winch compatible bull bars on the market
- High speed balanced motor with sealed bearings
- Repositionable clutch handle
- IP68 rated
- External remote motor breather
- Integrated anti-tamper power cut off
- Fully sealed competition style solenoid
- All in one wireless/plug in controller with LED torch



WINCH PACKAGE INCLUDES

WINCH DAMPER



WIRELESS /
PLUG-IN
CONTROLLER



EXTERNAL
REMOTE
BREATHER



COMPETITION
STYLE SOLENOID





SYNTHETIC ROPE
AND ALLOY FAIRLEAD

9500lb Winch

\$1079

12000lb Winch

\$1187



STEEL CABLE AND ROLLER FAIRLEAD

9500lb Winch

\$859

12000lb Winch

\$967



BLAST *PHASE II*

7" LED SPOT OR SPREAD
DRIVING LIGHTS

- 4800 raw lumens

\$218 ea



COMET

7" OR 9" LED DRIVING LIGHTS

- 4000 raw lumens

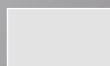
LED LIGHT COVERS FOR 7" OR 9" LED LIGHTS



- Shatterproof polycarbonate plastic

7" **\$21 ea**

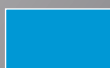
9" **\$27 ea**



Protective



Fog



Snow



Block Out

MEGATOM

LED SPOT AND
LIGHT BAR IN ONE

- Independent operation
- 75W driving light
- 45W light bar

\$495 ea



ECLIPSE

DRIVING LIGHT WITH
SIDE SHOOTERS

- 7540 raw lumens

\$242 ea



\$363 ea



METEOR

7" OR 9" LED DRIVING LIGHTS
WITH DAYTIME RUNNING LIGHT

- 4000 raw lumens



7" UNIVERSAL LED
FLOOD OR SPOT

- Interconnectable modular design



LED FOG LIGHT

- Suits Ironman 4x4 bull bar light pods



LED WORK
LIGHT

LED LIGHT BARS

- CREE LEDs
- IP67 and IP69K rated
- Multi-Voltage - 10-30Vdc

STRAIGHT

45W
279mm (11")
3150 Raw Lumens **\$174**

90W
500mm (19.5")
6300 Raw Lumens **\$231**

135W
722mm (28.5")
9450 Raw Lumens **\$325**

180W
942mm (37")
12600 Raw Lumens **\$424**

CURVED

180W
942mm (37")
12600 Raw Lumens **\$462**

135W
722mm (28.5")
9450 Raw Lumens **\$363**

90W
500mm (19.5")
6300 Raw Lumens **\$270**

\$160^{ea}



3" OR 5" UNIVERSAL LED WORKLIGHTS
- Each with side shooter spread



COSMO DUAL LED WORKLIGHT



STARBRITE RECHARGEABLE FLOODLIGHT

All prices quoted do not include freight or fitting. Prices quoted are subject to change without notice. Some products may vary depending on vehicle model.



SIDE STEPS AND RAILS

- Heavy duty steel construction with black powdercoated finish
- Checkerplate step treads
- Available in standard 50mm or heavy duty premium 60.3mm tube
(Premium not available on all models)
- Airbag compatible

Side Steps
Standard 50mm tube

\$851

Steps / Rails Combo
Standard 50mm tube

\$1022

Side Steps
Premium 60.3mm tube

\$933

Steps / Rails Combo
Premium 60.3mm tube

\$1129



Side Steps



**STANDARD
50mm TUBE**

Side Steps / Rails Combo



**PREMIUM
60.3mm TUBE**

Side Steps / Rails Combo



**CHECKERPLATE
TREAD**

AIRFORCE SNORKEL

\$387

**5 YEAR
WARRANTY**



DESIGNED AND TESTED IN AUSTRALIA

- Raised air intake for cleaner air and safer water crossings
- UV stabilised polyethylene (LLPDE)
- Ram head with built-in rain deflector
- Increased airflow for improve performance
- Dyno tested for improved air intake



\$39

SNORKEL MESH



PINNACLE CANOPY BY

WITH CENTRAL LOCKING REAR WINDOW

- Reinforced structured design
- Built from vinyl ester fiberglass
- Smooth finish
- Lockable and tinted lift-up windows
- Colour coded - limited range
- Internal sliding front window
- Marine carpet lining
- Battery LED internal light
- Available for 4x2 and 4x4 dual cab models



Central Locking



Internal Light



Internal Sliding Window



Large Access Windows



\$3297

\$3743**THERMO-PLAS
CANOPY**

- In-built metal supporting frame
- Built from 9mm ABS plastic
- Smooth finish
- Lockable, tinted lift up windows
- Colour coded - limited range
- Plug and play wiring loom
- Marine carpet lining
- Central locking on some models
- Rear LED stop light on some models
- Available for 4x2 and 4x4 dual cab models



Internal Sliding Window



Gas Strut Openings



- No drill installation
- 3mm tough polyethylene
- UV stabilised

\$488**\$250****ABS CANOPY MOUNTING
KITS FOR ROOF RACKS**

- Durable and hard wearing black powdercoated finish
- Suits all steel and alloy roof racks
- Suits Thermo-Plas canopies only



REAR PROTECTION TOW BAR

PROTECT THE REAR OF YOUR 4X4 UTE WITH AN IRONMAN 4X4 STEEL PROTECTION BAR

- Constructed from 4mm steel, with 8mm tow bar sub frame
- ADR and Australian standards compatible
- Dynamic and static testing to 3500kg
- Integrated tow bar
- Includes tow hitch, pin and 50mm 3500kg tow ball
- Protected trailer and Anderson Plug location
- LED numberplate lights

\$1196



TOWING ACCESSORIES

TOW BAR WIRING LOOMS

- CAN bus compatible
- OEM style connectors
- Plug and play
- Includes 7 pin flat plug

From \$139

REAR PROTECTION TOW BAR PLATES

- Provides additional grip when using as a step
- steel construction with a textured black powdercoated finish

\$131





Rear protection tow bar pricing does not include colour coding



HEAVY DUTY TOW BARS

- Compatible with factory rear bumper
- Dynamic and static testing to 3500kg
- Complete with tow hitch, pin and 50mm 3500kg tow ball

\$523



Tow Bar with Hitch and Ball



Tow Bar

All prices quoted do not include freight or fitting. Prices quoted are subject to change without notice. Some products may vary depending on vehicle model.



AIRBAG COMPATIBLE CANVAS SEAT COVERS

**TAILOR MADE COMFORT, SUITABLE FOR VEHICLES
WITH OR WITHOUT SIDE AIRBAGS**

- Vehicle specific tailored fit
- Foam backed for extra comfort and protection
- 12oz, 100% cotton natural fibre canvas
- Certified side airbag compatible
- Lumbar support control access
- Built-in map pockets



**Strong
Comfort
Canvas**



Custom Fit



**Flame
Retardant**



**Water
Resistant**



**Long Lasting
Quality**



**Maximum
Vehicle Seat
Protection**



Rear Canvas Seat Covers

Front Set

\$400 set

Rear Set

\$400 set





TWIN DRAWER SYSTEMS

- Galvanised steel construction and lined with marine carpet
- Fully assembled
- Complies to ADR42/05
- T-Lock lockable handles
- 200kg combined drawer rating



**100KG
RATING**

900mm Twin Drawers
900L x 970W x 275mm H

\$1242

1000mm Twin Drawers
1000L x 1020W x 275mm H

\$1296

1300mm Twin Drawers
1300L x 970W x 275mm H

\$1469

SINGLE DRAWER SYSTEM

900mm Drawer
900L x 490W x 275mm H

\$767

1000mm Drawer
1000L x 510W x 275mm H

\$783

1300mm Drawer
1300L x 490W x 275mm H

\$891



**100KG
RATING**



WING KITS

- Suits Twin Drawer Systems
- Vehicle specific design
- Lift out panels for easy storage access
- 12mm marine grade ply
- Black powdercoated finish on steel front fascia

900mm and 1000mm L **\$270**

1300mm L **\$351**



DUAL BATTERY SYSTEMS

IDEAL FOR RUNNING ACCESSORIES SUCH AS FRIDGES AND AWNING LIGHTS

40A DC TO DC BATTERY CHARGER

- 3-stage 12V booster charger
- Very low standby current <3mA
- 80A when combined with start assist kit



\$565

\$633

START ASSIST BOOSTER KIT

- Automatic emergency vehicle start assist
- Boosts DC to DC charger output to 80 amp

\$158



40A DC TO DC INTEGRATED SOLAR BATTERY CHARGER

- Smart alternator compatible
- Solar input 50W to 400W
- Pre-wired for battery monitor



\$173



140 AMP DUAL BATTERY MANAGER

- Fully automatic
- Dual voltage 12 / 24V
- Dual sensing

\$114

12V DIGITAL BATTERY MONITOR

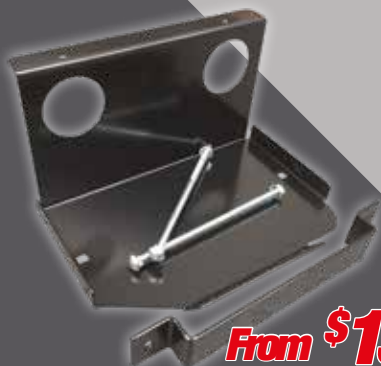
- Can be used on dual or single 12V battery setups
- Auto dimming display



275 AMP DUAL BATTERY MANAGER

- Automatic operation with manual override
- Includes in-dash switch

\$286



BATTERY TRAY

- Folded steel construction
- Black powdercoated finish
- Includes mounting hardware

From \$138

\$168



LED DUAL BATTERY MONITOR

- Displays main and AUX battery voltages
- Auto dimming display

AUTO ELECTRICS

ELECTRIC BRAKE CONTROLLER

- Easy adjustment dashboard dial
- Remote hideaway control box
- Mountable at any angle
- Push button override function
- Dual axle capability



\$226

LOW WATER ALARM

- Dash warning light and alarm
- Instant warning of engine coolant loss
- To suit 12 / 24V systems
- Suits plastic or metal header tanks



\$250



\$216

AUTO HEADLIGHT ON KIT

- Lights on when vehicle ignition is switched on
- 10 second delay at ignition
- Delay on exit. When the ignition is turned off the lights will stay illuminated for 10 sec



\$140

50 AMP CHARGE WIRE KIT

- 12V power connector
- 8 B&S cable for high power devices
- 50A connectors and fuse
- 6m x 8mm² high current cable
- Heavy duty inline fuse
- Australian made



ALLOY AND STEEL ROOF RACKS

ALLOY ROOF RACKS

- 60% weight saving over steel
- Reinforced aluminium mesh
- Durable gunmetal grey powdercoated finish



ALLOY CAGE RACK



ALLOY TRADE RACK

ALLOY RACKS

Cage Rack 1.4m

1.4m x 1.25m

\$897

Trade Rack 1.4m

1.4m x 1.25m - Open End

\$886

Flat Rack 1.8m

1.8m x 1.25m

\$1019

Trade Rack 1.8m

1.8m x 1.25m - Open End

\$1033

Cage Rack 1.8m

1.8m x 1.25m

\$1049

Trade Rack 2.2m

2.2m x 1.25m - Open End

\$1078

Cage Rack 2.2m

2.2m x 1.25m

\$1106

ROOF RACK MOUNTING KITS

- Durable powdercoated black finish
- Suit all steel and alloy roof racks
- Gutter mounting kits available in various heights

**Start from
\$180**



STEEL ROOF RACKS

- Strong steel construction
- Reinforced mesh
- Durable black powdercoated finish



STEEL CAGE RACK



STEEL ROOFTOP TENT RACK



STEEL TRADE RACK

Spare wheel mount on cage and trade style

STEEL RACKS

Cage Rack 1.4m
1.4m x 1.25m

\$709

Rooftop Tent Rack 1.8m
1.8m x 1.25m

\$709

Cage Rack 1.8m
1.8m x 1.25m

\$744

Rooftop Tent Rack 2.2m
2.2m x 1.25m

\$744

Cage Rack 2.2m
2.2m x 1.25m

\$772

Trade Rack 1.8m
1.8m x 1.25m - Open End

\$709

Trade Rack 2.2m
2.2m x 1.25m - Open End

\$738

All prices quoted do not include freight or fitting. Prices quoted are subject to change without notice. Some products may vary depending on vehicle model.



\$218

**60L
CAPACITY**

550 W x 460 D x 335mm H

\$273

**100L
CAPACITY**

700 W x 460 D x 410mm H

\$260

**65L
CAPACITY**

900 W x 460 D x 250mm H
*Does not include removable storage tray (not shown)



Removable tool / storage tray not included in 48L

\$346

**140L
CAPACITY**

915 W x 460 D x 440mm H

\$174

**48L
CAPACITY**

410 W x 410 D x 410mm H

*Removable storage tray not included

\$444

**216L
CAPACITY**

1300 W x 460 D x 460mm H

- Manufactured from tough LLDPE UV 3.6mm stabilised plastic
- Dust and water resistant - safe for tools, camping gear and electronic equipment
- Lockable heavy duty latches
- Heavy duty spring loaded handles / tie down points
- Removable tool / storage tray*
- Strap over points for added security when in transit
- Interlocking stackable design

WEATHERPROOF ROOF TOP CARGO BAGS

FREE UP VALUABLE BOOT SPACE

- Weatherproof, reinforced tear resistant fibre, constructed from 500D PVC tarpaulin
- Water resistant zipper overlap and welded seams provides added protection from water ingress
- Heavy duty webbing straps, zips and UV50+ buckles
- Noise and wind reducing straps and buckles

\$192

**200L
CAPACITY**

1400L x 500W x 300mm D

\$216

**250L
CAPACITY**

1100L x 800W x 300mm D

\$250

**350L
CAPACITY**

1200L x 960W x 300mm D

\$296

**500L
CAPACITY**

1500L x 1100W x 300mm D

\$334

**600L
CAPACITY**

1800L x 1100W x 300mm D



ALUMINIUM TOOL BOXES

- Powdercoated white
- T-Lock handles
- Stainless steel piano hinges
- Twin doors
- Gas struts
- Lock water caps

UNDER-TRAY BOX

- Water cap on lock



\$270 ea

750 / 520 x 270 x 440mm

LOW PROFILE

- Stainless piano hinge
- Water caps on locks



\$519

950 x 600 x 500mm



\$659

1250 x 600 x 500mm

GULL WING TRUCK BOX

- Twin door



\$713

1770 x 550 x 400mm



\$659

900 x 500 x 680mm

ONE-TONNER

- Stainless piano hinge
- Water caps on locks



\$785

1210 x 500 x 680mm

STEEL TOOL BOXES

STEEL TRUCK BOX

- Powdercoated white finish
- Sealed bearing on slides
- Heavy duty side handles
- Fully welded
- T-Lock handles



\$1485

1210 x 640 x 750mm



\$1037

700 x 640 x 750mm



- High profile sits above ute rail
- Heavy duty double lock
- Waterproof and dust proof
- Heavy duty with stay open lid

140L CAPACITY



UTE BOX

1320 x 505 x 475mm

\$654

200L CAPACITY



UTE BOX EXTRA

1400 x 540 x 540mm

\$684



MINING AND FLEET



LED HI-VIS LIGHT BAR

- Reverse alarm
- Strobe style LED beacon
- Stop, tail, indicator and reverse function

\$449



\$118

WHEEL CHOCKS

- 2 Chocks including storage rack
- Textured surface prevents slipping
- Manufactured from UV stable urethane

EMBOSSED MUD FLAPS

- Manufactured from premium grade rubber
- Heavy duty to outlast extreme conditions



\$66 pair



HIGH MOUNT FLAG WITH RED LED

- Available in 1.8m or 2.4m Length

1.8m

\$146

2.4m

\$152



REVERSE CAMERA

- Rear view mirror replacement
- OE Approved

\$594

\$95

SAFETY TRIANGLE SET

- 3 heavy duty triangles
- High visibility and complies with Australian standards AS3790-1992



BATTERY ISOLATOR / JUMP START SWITCH

- Heavy duty design
- Includes Anderson plug connection



\$327

12V LED REAR TRAY LIGHT/ COMBINATION LED TAIL LIGHT

- LED stop / reverse / indicator light and reflector
- Universal fit
- ADR and ECE compliant
- 44 high power LED's
- Rated to IP69
- Sold individually



\$109 ea

275 L x 95 H x 50mm W

\$33

ADVENTURE
CHALLENGE WA

DVD'S

- Ironman 4x4 Adventure Challenge WA 2012, 2013, and 2014 DVD's
 - Join Penny Wells and the Discover Oz Crew as they explore Australia's remote regions.
- Vol: 2, 3, 4, 5 and 6 available.



DISCOVER OZ PRODUCTIONS TOP OF DOWN UNDER

\$48

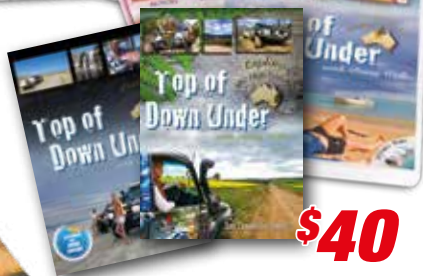
THE AUSTRALIAN HANDBOOK

- Limited edition
- Complete off-road bible

How to's, driving techniques, recovery, accessories, navigation and communication, modern vehicle types and environments



\$40



CAP

\$13



\$15

DRINK BOTTLES

- 600ml Stainless steel
- Integrated straw



KEYRINGS

\$2



\$3



DRINK HOLDERS

\$5



CAR AIR FRESHENER

\$1.10





VICTORIA

2-8 Bessemer Drive,
Dandenong South, VIC 3175

NEW SOUTH WALES

22 Yilen Close,
Beresfield, NSW 2322

QUEENSLAND

160 Robinson Road East,
Geebung, QLD 4034

SOUTH AUSTRALIA

36 Millers Road,
Wingfield, SA 5013

WESTERN AUSTRALIA

Cnr Baile Road and Craft Street,
Canning Vale, WA 6155

PRODUCTS AVAILABLE FROM OVER 800 STORES AUSTRALIA-WIDE
FOR YOUR NEAREST DISTRIBUTOR, CALL 1300 731 137 OR VISIT US AT:
www.ironman4x4.com



Find us on Facebook
facebook.com/Ironman4x4au

Prices do not include freight or fitting. Prices are subject to change without notice. Colours and styles may vary to those displayed. Some products may vary depending on vehicle model. Our goods come with guarantees that cannot be excluded under the Australian Consumer Law.

You are entitled to a replacement or refund for a major failure and for compensation for any other reasonably foreseeable loss or damage. You are also entitled to have the goods repaired or replaced if the goods fail to be of acceptable quality and the failure does not amount to a major failure. E&OE.

©Copyright 2021 Ironman 4x4 Pty Ltd. No part of this publication may be reproduced or replicated without the prior written consent of Ironman 4x4 Pty Ltd.