



# FW35

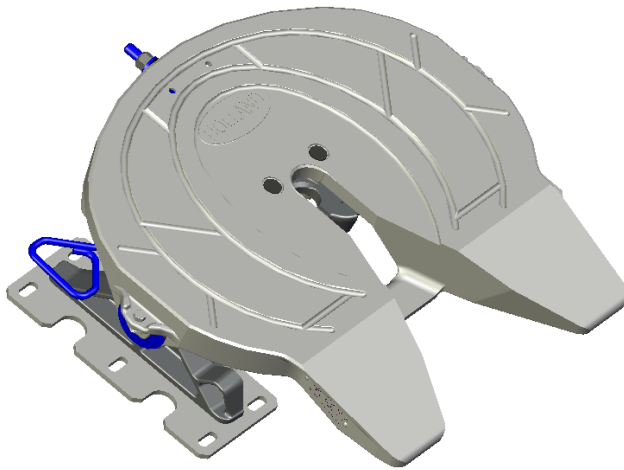
## SERVICE BULLETIN

---



### FW35 Inspection and Out-of-Service Condition

---



### CONTENTS

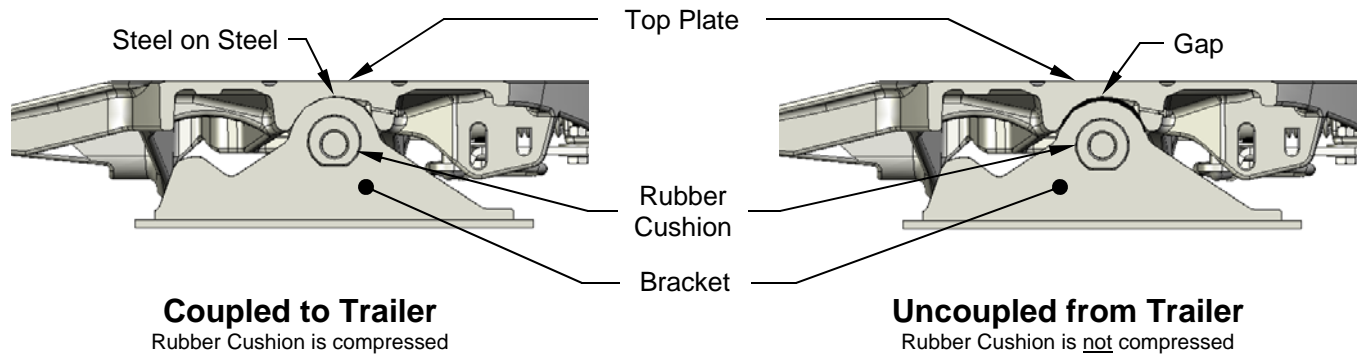
---

	Page		Page
Vertical Movement between Top Plate and Bracket .....	2	Lock Jaw Pin Holes .....	3
Bracket Pin .....	2	Horizontal Movement .....	3
		Sliding Brackets.....	4

## Vertical Movement between Top Plate and Bracket

---

- The function of the bracket pin and the rubber cushion is to retain the top plate to the bracket, and to absorb the shock load as the tractor is bob-tailing

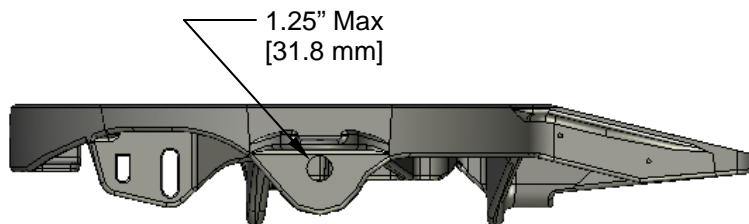


- When 3/8" [9.5 mm] free upward movement is detected, steel shims can be installed. These shims (XA-2018-4) are 3/16" [4.8 mm] thick, and are tack welded in the top plate casting. The shims will require grinding to achieve proper fit to the bracket.

## Bracket Pin

---

- Holland XA-351 fifth wheel top plates have loose fitting bracket pins. When new there can be a difference of 0.025" [0.64 mm] between the diameter of the bracket and the hole in the fifth wheel top plate.



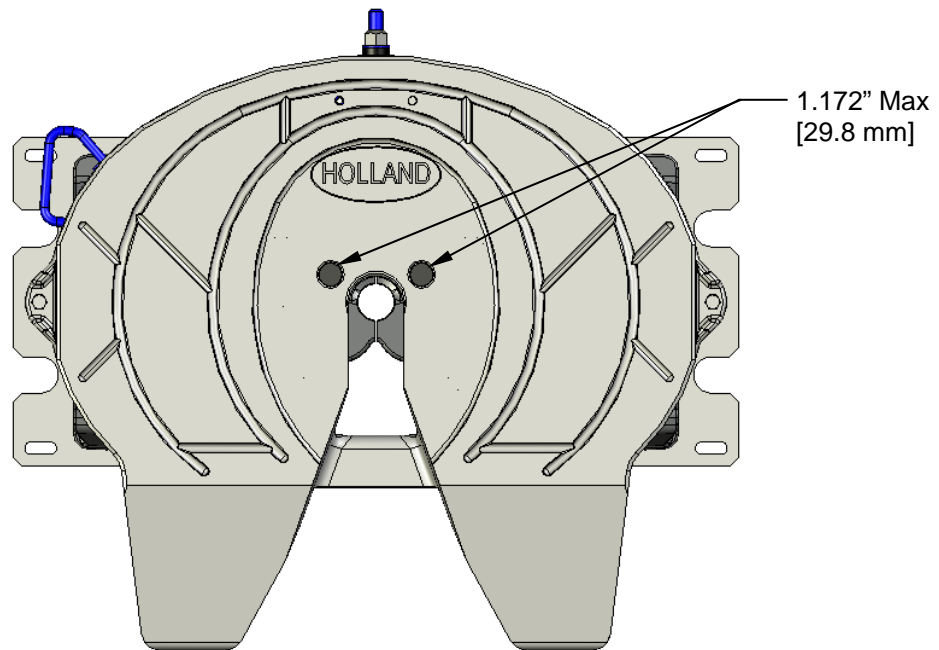
### Bracket Pin Out-of-Service Criteria

- Holland's out-of-service condition is more than 1/8" [3.2 mm]. This measurement is the difference in the diameter of the hole in the fifth wheel top plate and a **new** bracket pin.

## Lock Jaw Pin Holes

---

- The two lock jaw pins in the XA-351 series top plate are a “drive” fit. If a loose pin is encountered the top plate can remain in service, however the top plate should not be rebuilt.



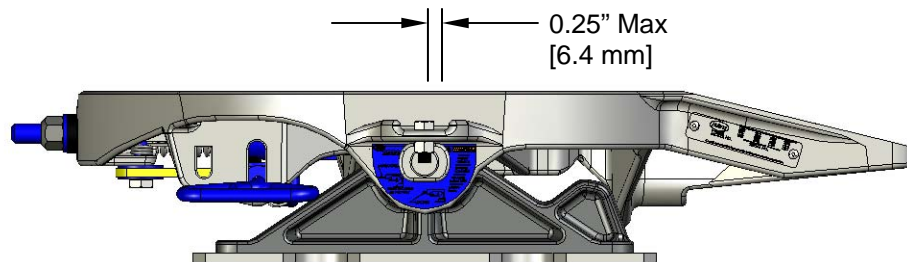
### Lock Jaw Pin Out-of-Service Criteria

- Holland’s out-of-service condition is 0.045” [1.14 mm]. This measurement is the difference in the diameter of the hole in the fifth wheel top plate and a **new** lock jaw pin.

## Horizontal Movement

---

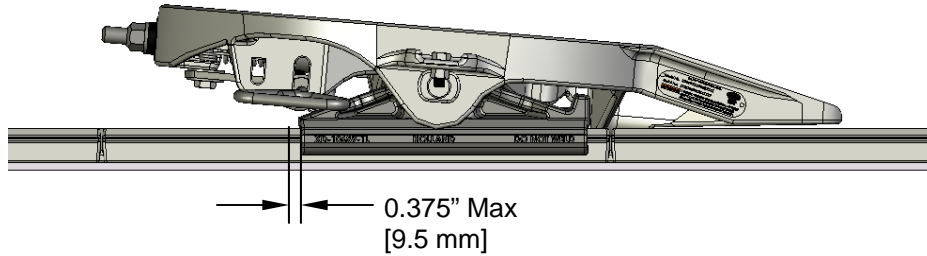
- If the horizontal (fore and aft) movement between the fifth wheel locking mechanism and a Holland lock tester exceeds ¼” [6.4 mm] the fifth wheel requires adjustment or rebuild.



## Sliding Brackets

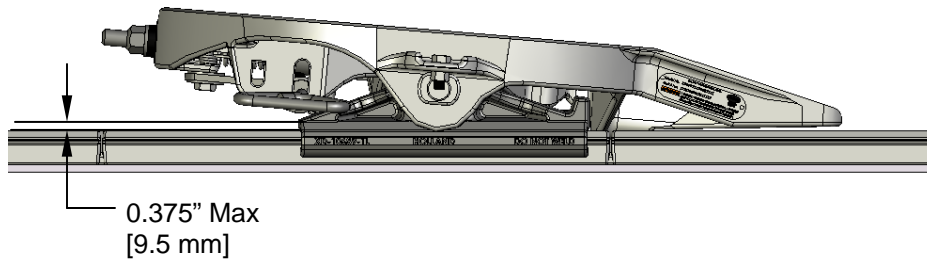
---

- When the horizontal fore and aft play in the slider bracket mechanism exceeds 3/8" [9.5 mm] an adjustment may be required.



### Bracket Out-of-Service Criteria

- Holland's out-of-service condition is more than 3/8" [9.5 mm]. This 3/8" measurement can be either horizontal (fore and aft, left to right), or vertical (up and down).



SAF-Holland Technical/Customer Service Tel: 519-537-3494



SAF-Holland Canada, Ltd.  
519.537.3494 Fax 800.565.7753  
Western Canada  
604.574.7491 Fax 604.574.0244