

Foot Mount Brackets

Edbro

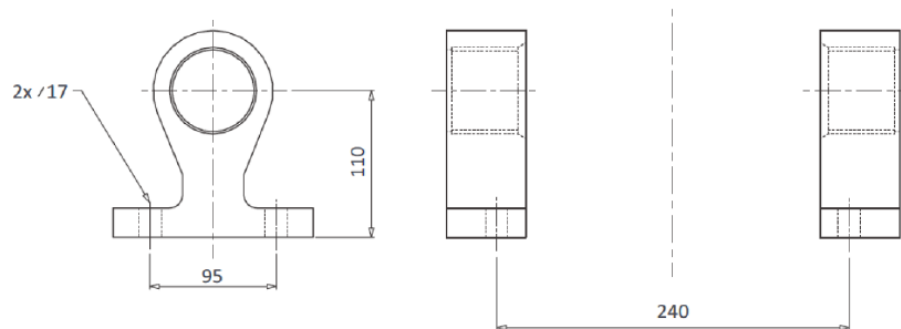
Cylinder Brackets

Foot Mounting Brackets

CS13 Cylinders

13110B60F 7 Kg each

Includes GB376
Low Maintenance Bush



Edbro

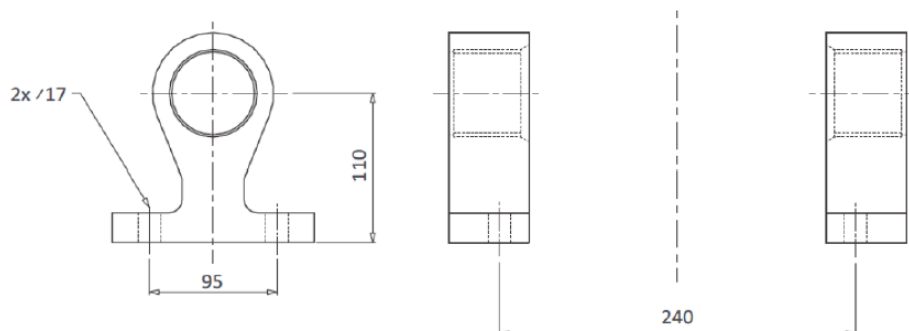
Cylinder Brackets

Foot Mounting Brackets

CS15 Cylinders

15063B60Q 5 Kg each

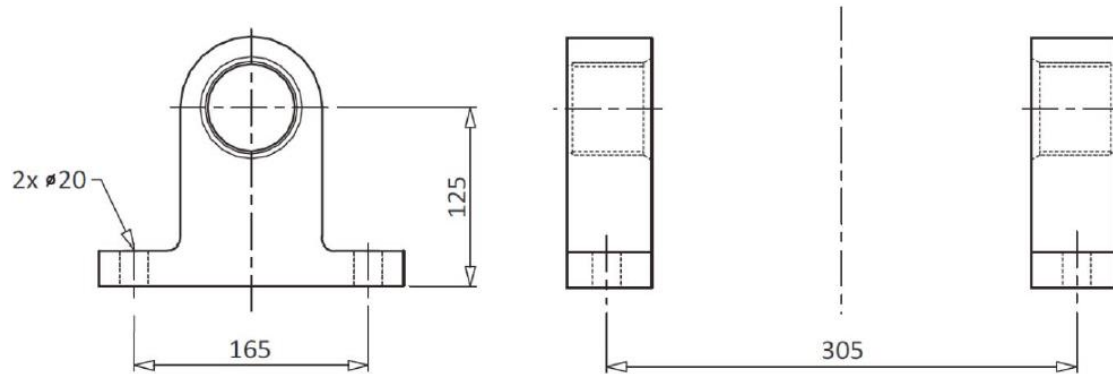
Includes GB376
Low Maintenance Bush



CS15 Cylinders

15125B60F 7 Kg each

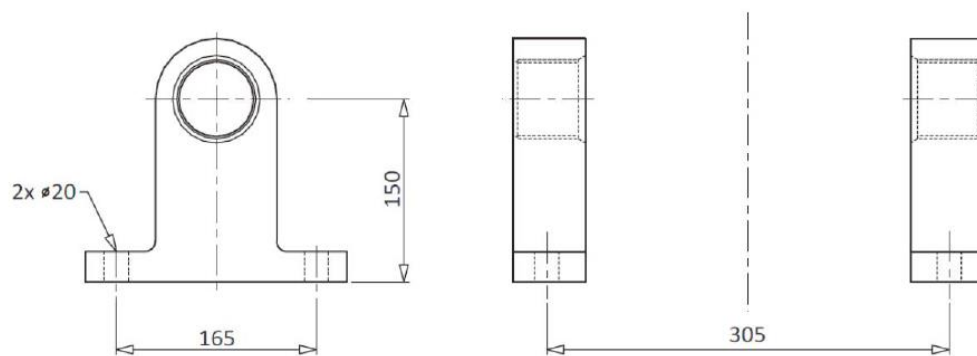
Includes GB376
Low Maintenance Bush



CS15 Cylinders

15150B60F 9 Kg each

Includes GB376
Low Maintenance Bush





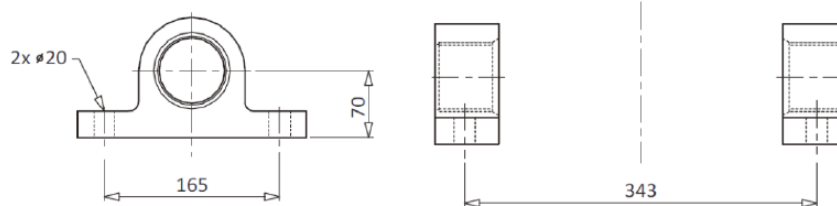
Cylinder Brackets

Foot Mounting Brackets

CS17 & CS 18 Cylinders

18070B60Q 6 Kg each

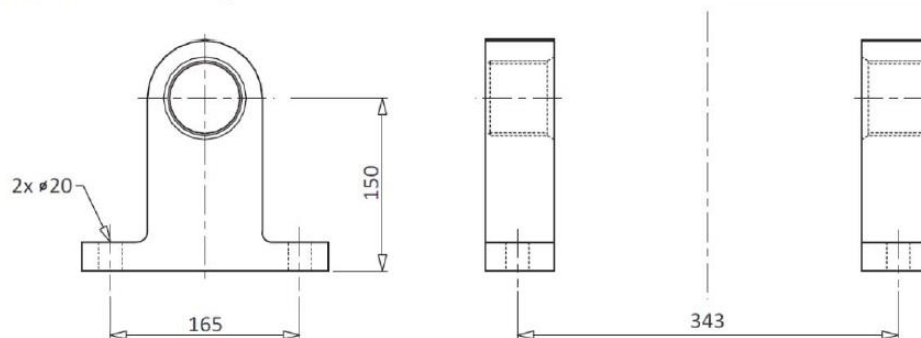
Includes GB376
Low Maintenance Bush



CS17 & CS 18 Cylinders

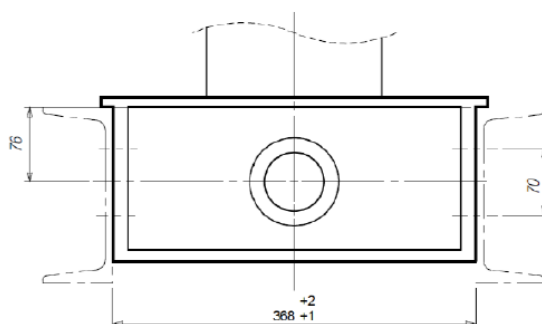
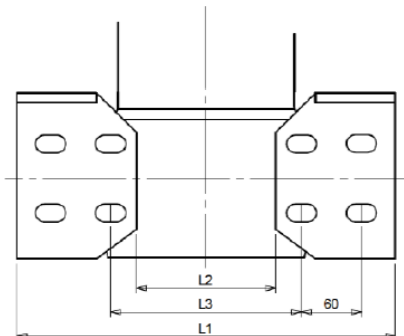
18150B60F 10 Kg each

Includes GB376
Low Maintenance Bush



Standard Bearing Brackets

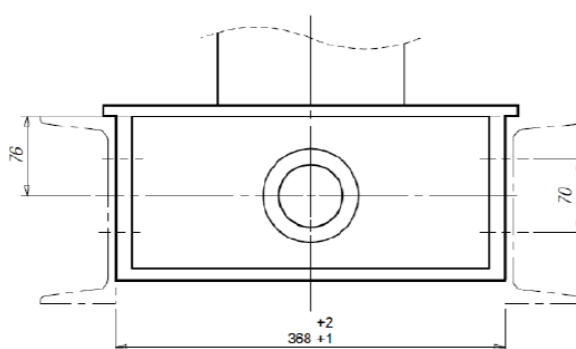
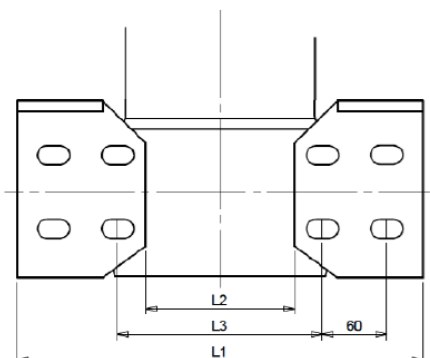
BB200 11 Kg each



	CS15	CS/CD 17/18	CS17L/18L
	Standard	Standard	Standard
L1	380	404	389
L2	140	164	149
L3 min	180	204	189
std	204	204	204
max	204	228	213

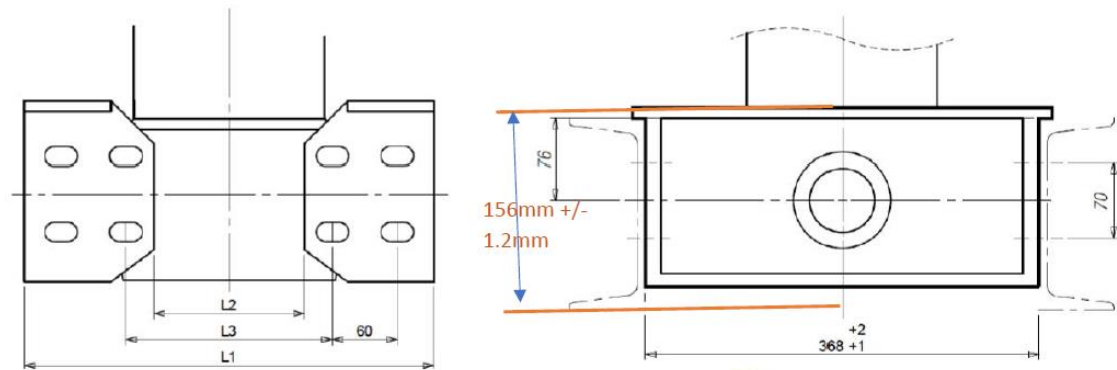
Standard Bearing Brackets

BB200/B 11 Kg each



	CS15	CS/CD 17/18	CS17L/18L
	Standard	Standard	Standard
L1	380	404	389
L2	140	164	149
L3 min	180	204	189
std	204	204	204
max	204	228	213

Includes GB370
Low Maintenance Bush

BB203*11Kg each*

It is the superseded version of BB103CT.

It is cast face to face. Overall height from face to face is 156mm.

Weight: 11 kg.



	CS11/13	CS15
	Standard	Standard
L1	338	383
L2	98	143
L3	min 138	183
	std 158	204
	max 162	207

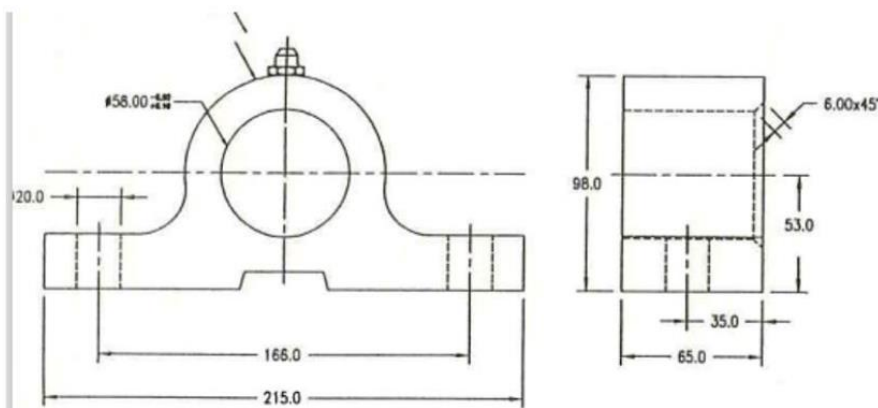
All dimensions are given in mm unless otherwise stated.
Technical Specifications are subject to change without notice.

8

FLY 020 017 EN_08-19

Edbro

6604 – Trunnion Foot for Old CS11, CS13 and CS15.

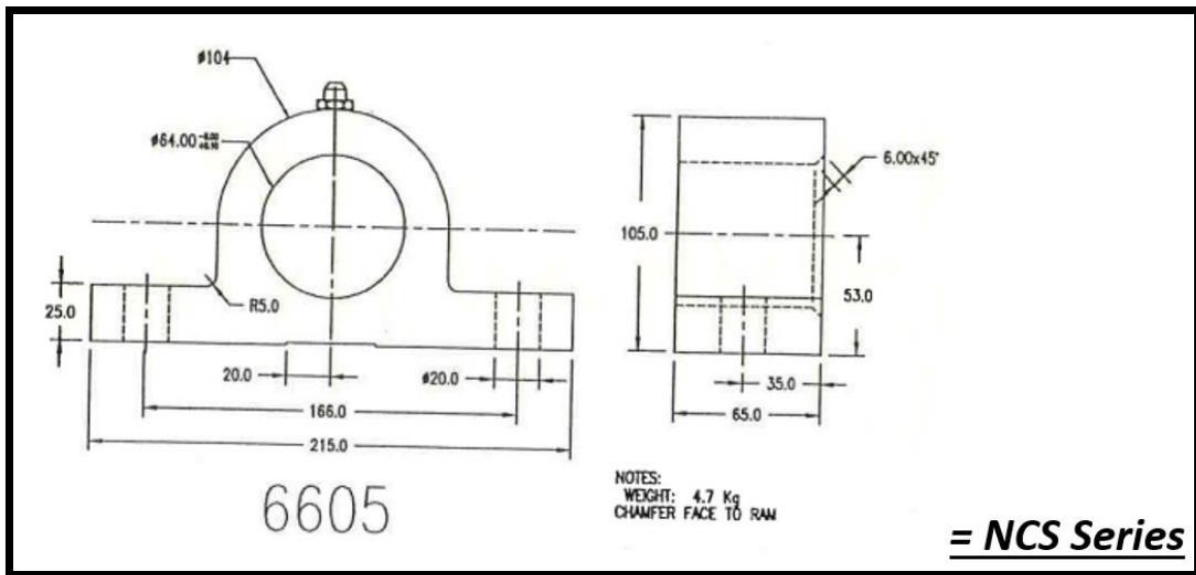


6604

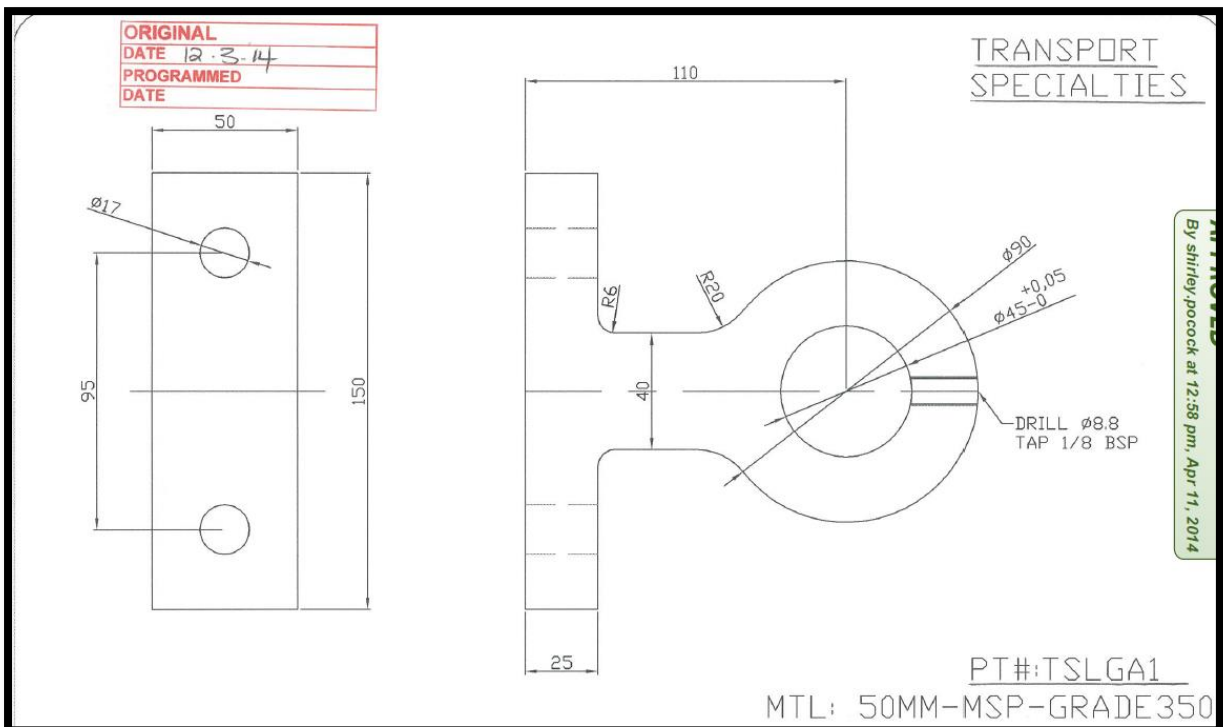
6604A – 45°

= CS Series

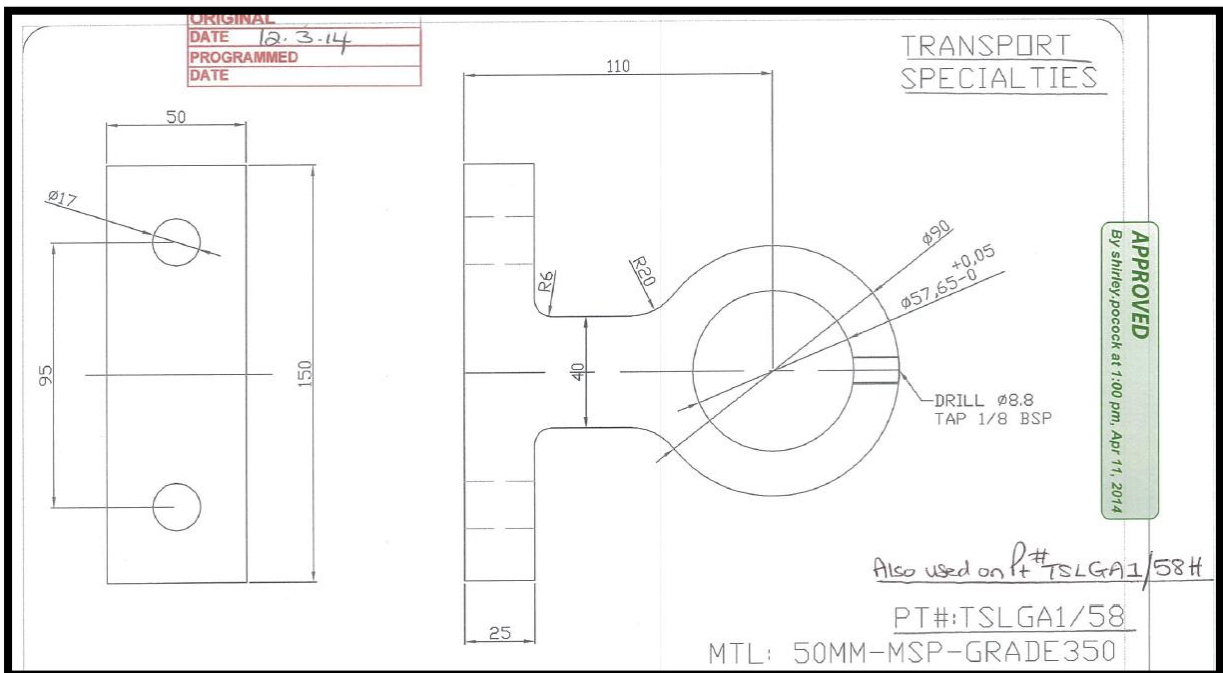
6605/60 – Trunnion Foot for NEW CS.



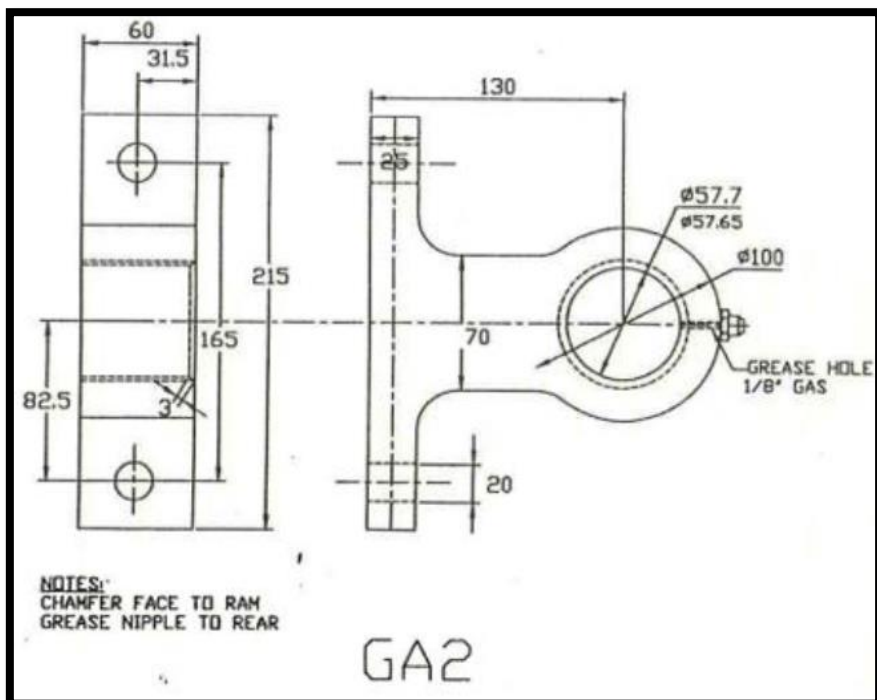
GA1- Trunnion Foot 4D: CS10 Mounting Foot



GA1/58 – Old CS11 Mounting Foot



GA2 – CS 15 Mounting Foot

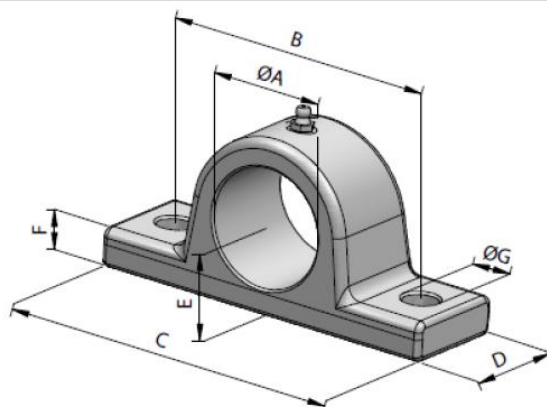


SUPPORTI PER CILINDRI / BRACKETS FOR CYLINDERS

Our Part#

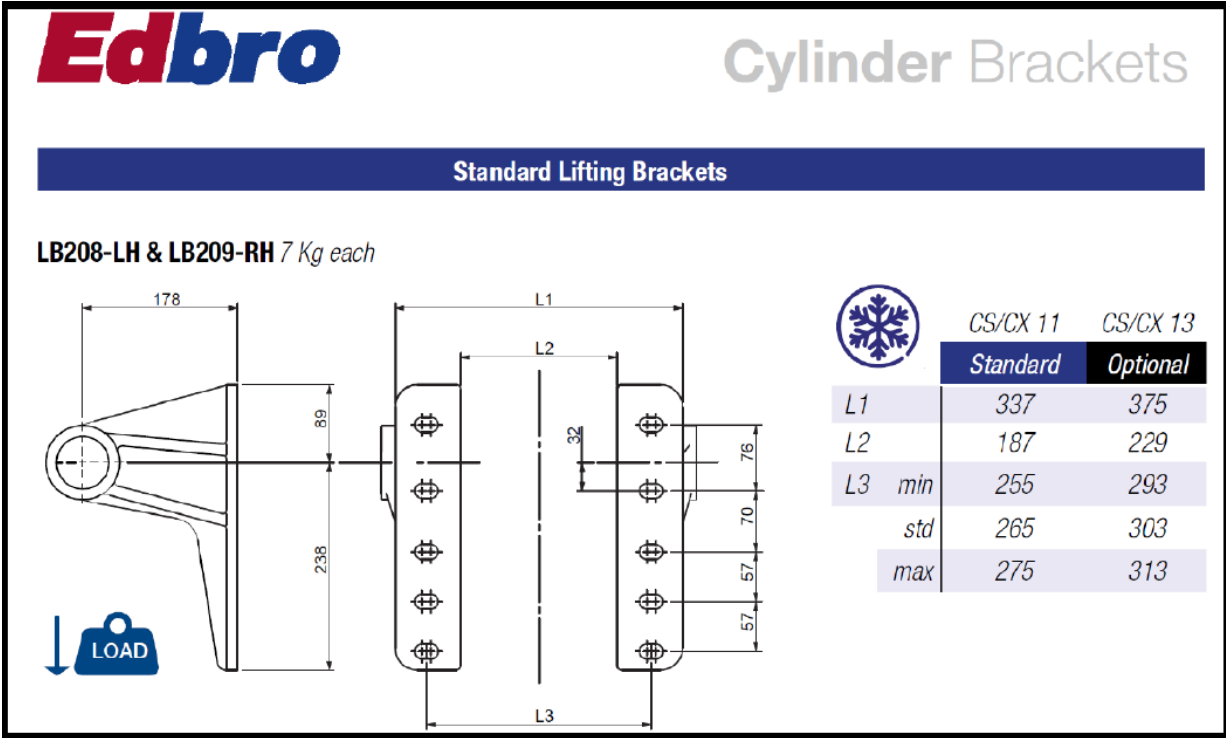
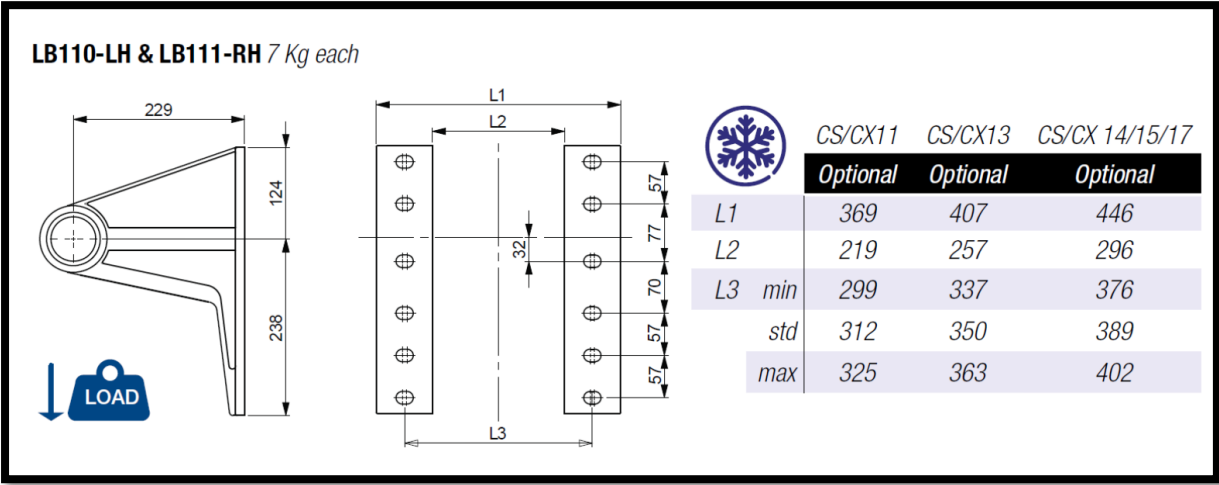
140139 &

140148



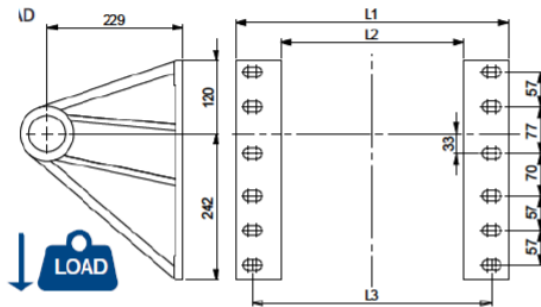
TIPO TYPE	CODICE CODE	DIMENSIONI - <i>DIMENSIONS</i>							Peso Weight
		Ø A	B	C	D	E	F	Ø G	kg
Ø 35	140-001-10019	35,5	95	120	45	27	12	13	1
Ø 40	140-001-10206	40,5	105	140		33	15	15	1,2
Ø 45	140-001-10395	45,5				37	17		1,5
Ø 50	140-001-10484	50,5				120	155		50

Lifting Brackets



Standard Lifting Brackets

LB200 & LB201 8 Kg each

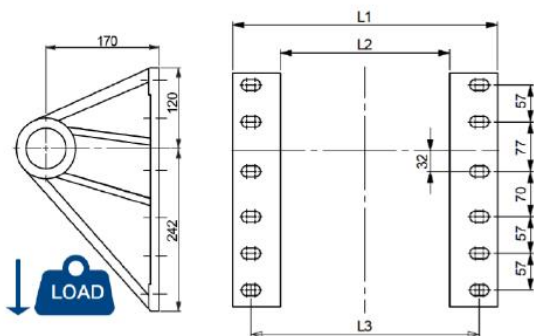


	CS11	CS13	CS 15 / 17L	CS 17/18 /18L
	Optional	Optional	standard	standard
L1	379	417	456	468
L2	229	267	306	318
L3 min	309	347	386	398
std	322	360	388	400
max	335	373	412	424

Only for use in controlled applications with a maximum body and payload of 36 tonnes.

LB104 & LB105

8 Kg each



	CS11	CS13	CS15	CS17/18	CS17L/18L
	option	standard	standard	standard	standard
L1	379	417	456	468	454
L2	229	267	306	318	304
L3 min	309	347	386	398	384
std	322	360	388	400	386
max	335	373	412	424	410

Lifting brackets for OE hoists

Edbro

Cylinder Brackets

Top Eye Brackets

PLAIN EYE INC LOW MAINTENANCE BUSH

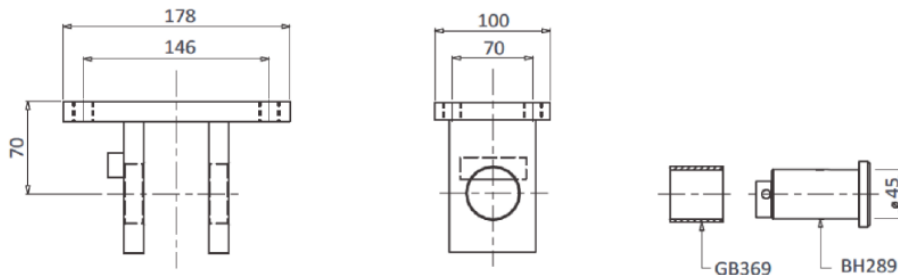
Plate assembly supplied with Pin, Bush, Washer & Retaining pin.

OMK1 (For use with CS11, CS13, CS15/4 & CS15/5 and CS17/5)

5 kg Assy

Fabricated bracket suitable for welding

For use with **OE type**



Edbro

Cylinder Brackets

Top Eye Brackets

PLAIN EYE INC LOW MAINTENANCE BUSH

Plate assembly supplied with Pin, Bush, Washer & Retaining pin.

OMK1C (For use with CS11, CS13, CS15/4 & CS15/5 and CS17/5)

5 kg Assy

Cast Bracket

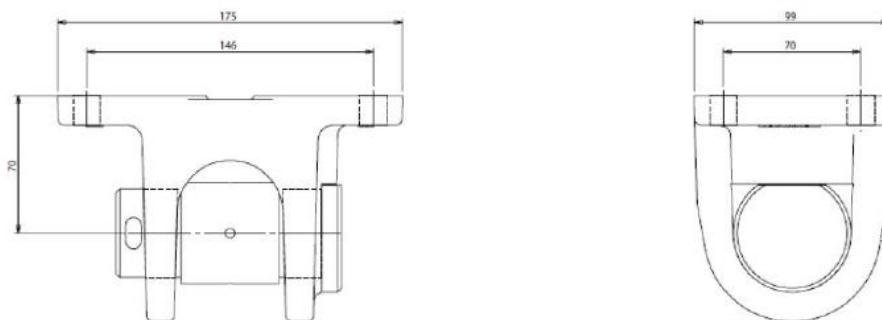
For use with **OE type**



ATTENTION!

Cast brackets are not suitable for welding

Includes GB369
Low Maintenance Bush



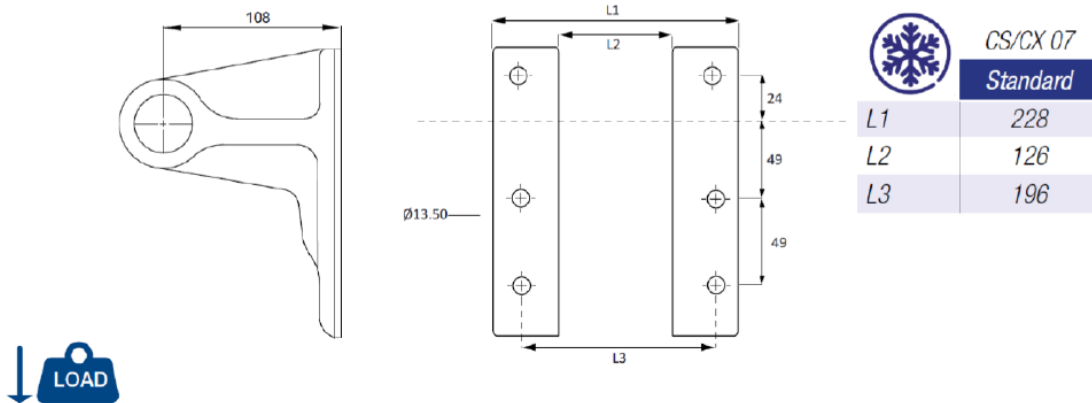
For CS/CX07

Edbro

Cylinder Brackets

Standard Lifting Brackets

EB165/1 & EB166/1 4 Kg each



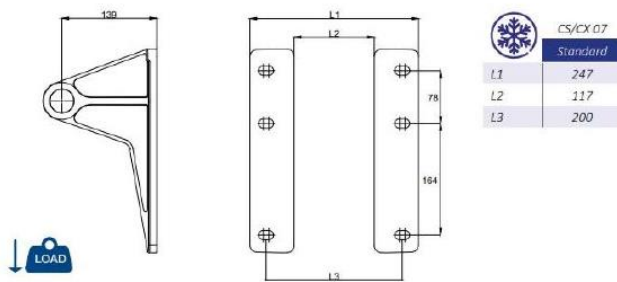
Cast version-EBF3W and EBF3X

The EBF3X and EBF3W brackets are fabricated versions of our cast brackets LB210 and LB211. The main difference between them is the cast versions have slots to mount, the EBF versions have holes.

Use the below for mounting taking the L3 dimension for your hole centres. Dimension L3 for LB210 and LB211 is to the centre of the slots and set based on having clearance between the brackets for mounting the cylinder.

Hope that helps, if you need anything else let me know.

LB210 & LB211 9 Kg each



Best regards / Saludos / Mit freundlichen Grüßen / Cordialement
Jon Adams AMIMeche
Lead Test Engineer