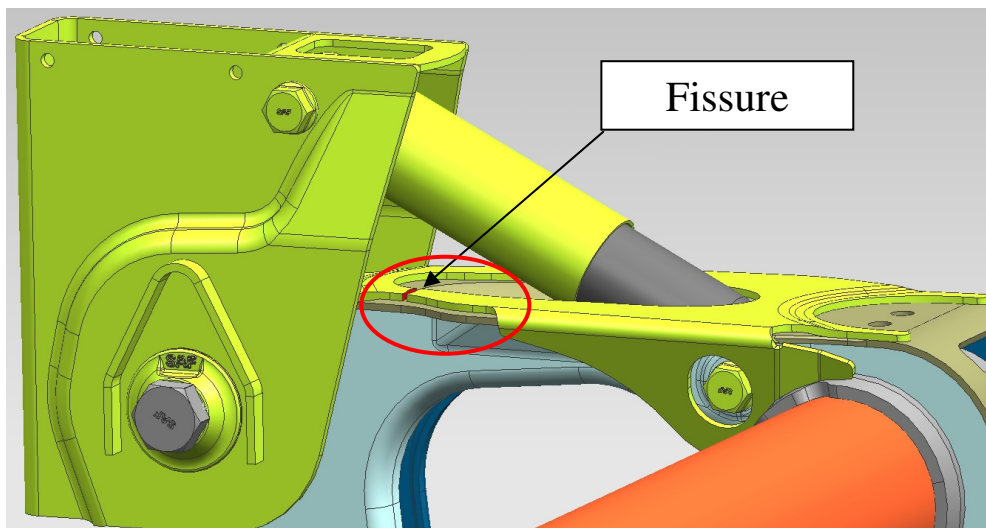


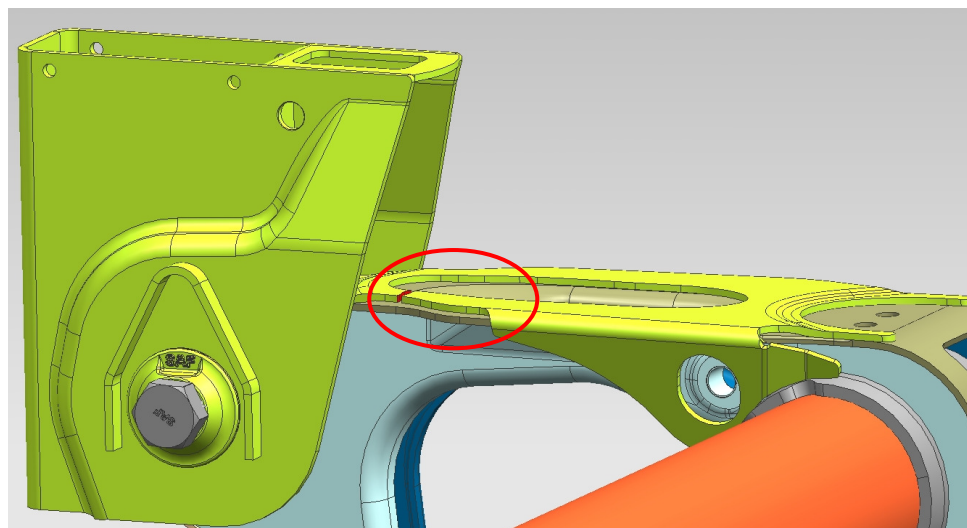
Repair Solution „Off Road“

This repair has to be accomplished on both trailing arms of an axle, even if fissures arose only on one.

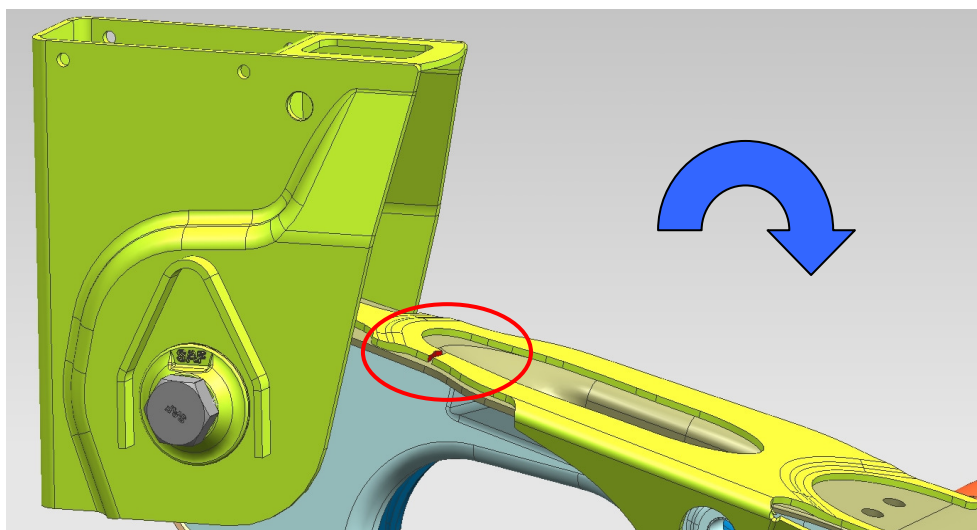
1) Initial position with formation of cracks



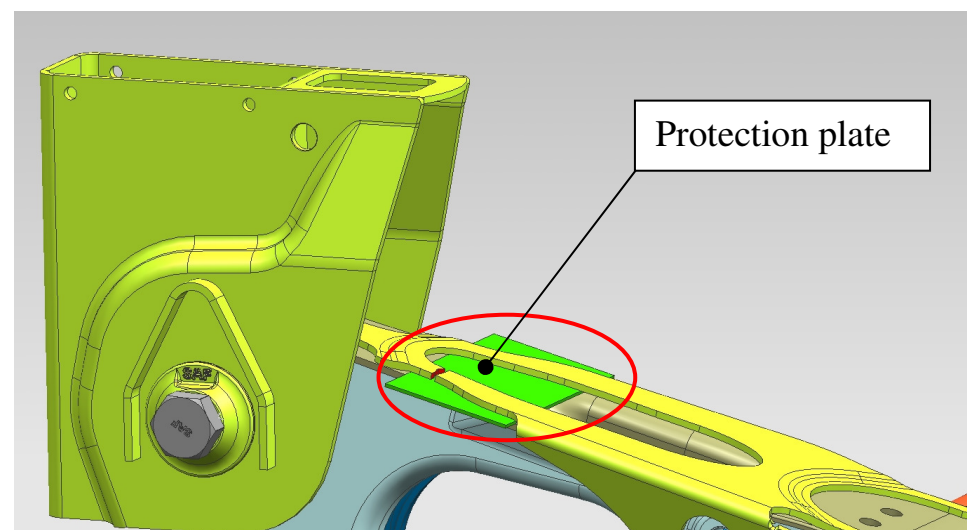
2) Remove the shock absorber



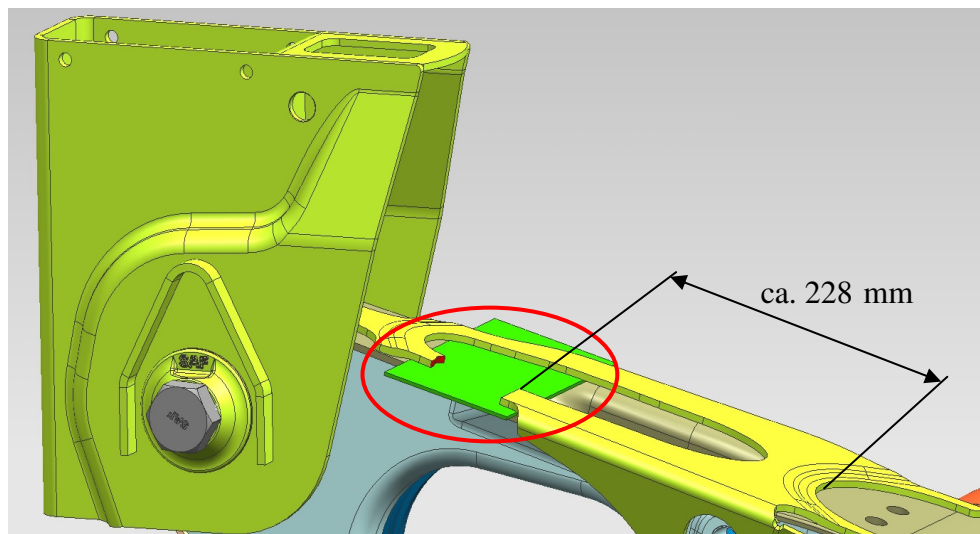
3) Turn the axle body downwards



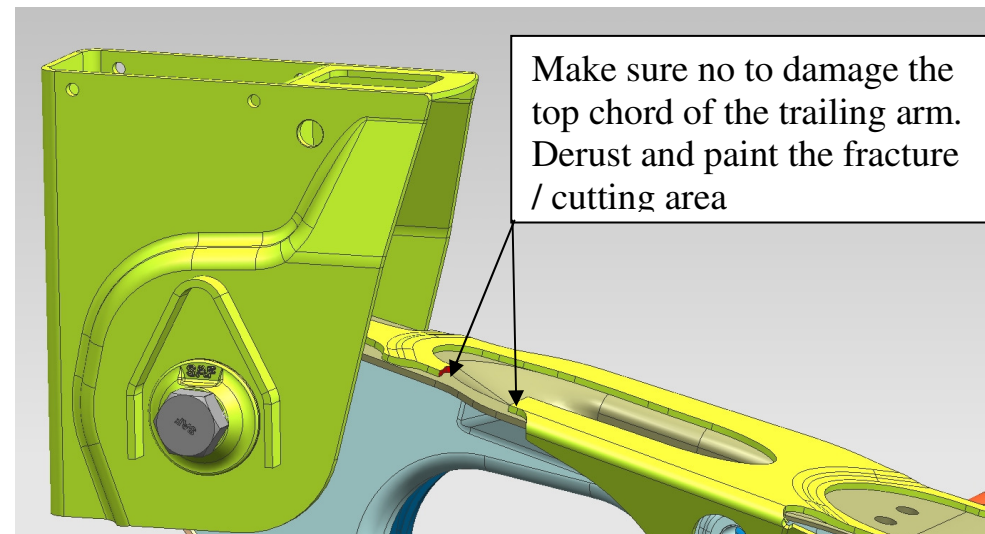
4) Insert the protection plate



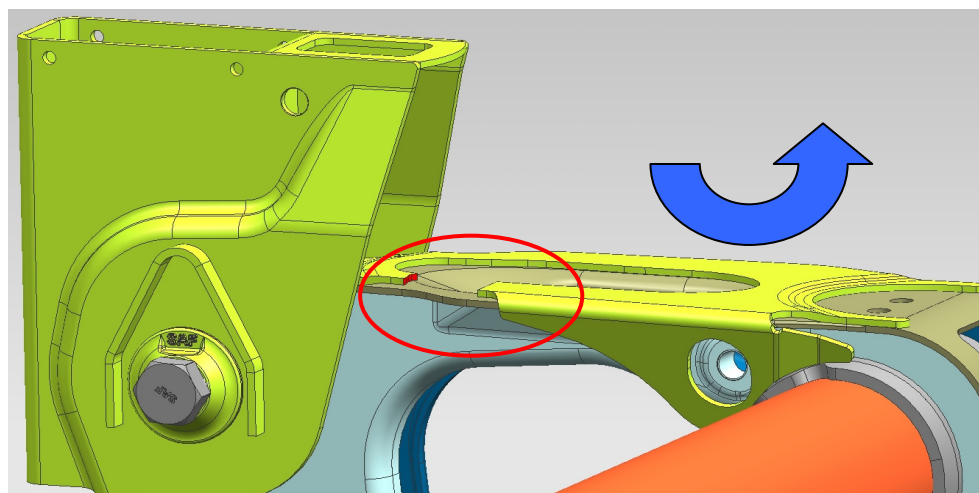
5) Cut



6) Remove the protection plate and Rework the fracture / cutting area



7) Turn the axle body upwards



8) Install the shock absorber and Restore the ride height

