



# PRODUCT SPEC GUIDE

June 2021



TRANSPORT TECHNOLOGY SOLUTIONS

**THE LIGHTEST 19.5"**  
**TRAILER WHEEL** IN THE  
MARKET WITH THE LATEST  
INNOVATIVE TECHNOLOGIES



## 19.5" x 7.5" Trailer Wheel

32mm bolt hole

**UNMATCHED STRENGTH**  
AT AN UNBEATABLE WEIGHT

0800 875 669 | [TRANSPECS.CO.NZ](https://transpecs.co.nz)



TRANSPORT TECHNOLOGY SOLUTIONS

# NO MORE POLISHING

Alcoa Dura-Bright® EVO Wheels



## THE SURFACE TREATMENT YOU CAN COUNT ON TO KEEP YOUR WHEELS LOOKING GREAT FOR THE LONG RUN.

Dura-Bright® EVO Wheels feature a new and improved surface treatment that stands stronger against tough conditions – without the need to polish. And when it's time to clean, a simple soap and water wash gets you back on the road.

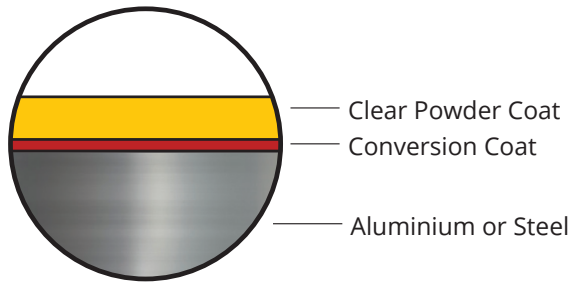
0800 875 669 | [TRANSPECS.CO.NZ](https://www.transpecs.co.nz)



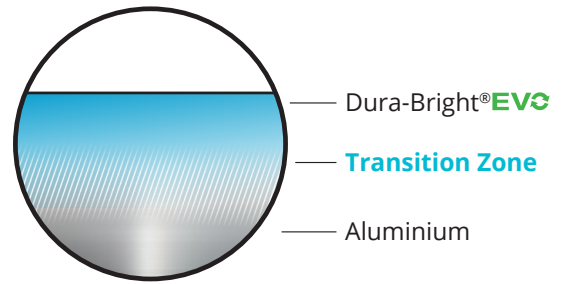
TRANSPORT TECHNOLOGY SOLUTIONS

# BREAKTHROUGH TECHNOLOGY

## CONVENTIONAL COATING



## DURA-BRIGHT® EVO



## UNBEATABLE RESILIENCE

- **10x more resistant** to corrosion caused by road salts and weather elements
- **3x more resistant** to harsh chemicals

On ordinary wheels, a coating is typically applied as a layer that sits on top of the wheel surface. When scratched, water and salt can penetrate the coating, resulting in corrosion and further deterioration.

Patented Dura-Bright® EVO penetrates the aluminium, forming a molecular bond that becomes an integral part of the wheel. It prevents cracking, peeling and filiform corrosion often seen on coated wheels.

**The benefits to you?** Wheels that keep their shine and stay looking newer for longer, even after hundreds of washes\* and thousands of miles.

## ALL ALCOA ALUMINIUM WHEELS HAVE



Best-in-Class  
Warranty



Increase Payload.  
Improve Fuel  
Efficiency.



Easier, faster  
and safer  
maintenance.



Best-in-Class  
customer service and  
training



Lightest, Strongest  
and Largest Family of  
Aluminium Wheels



Stronger than Steel  
One-piece forged  
Aluminium



Increased  
Resale Value &  
100% Recyclable

\* Alcoa Dura-Bright® EVO Wheels should be cleaned in accordance with the Alcoa Dura-Bright® Cleaning Guide.



# SURFACE OPTION CODES

Alcoa aluminium disc wheel mounting dimensions are consistent with SAE J694 or ISO 4107 as applicable. The finish for Alcoa Wheels is specified by replacing the 6th digit "x" shown in the part number with the appropriate finish option. Finishes are defined as:

- |                                                       |                                                                                 |
|-------------------------------------------------------|---------------------------------------------------------------------------------|
| 0 - Brushed finish on both sides as applicable*       | 7 - LvL ONE® finish on both sides as applicable*                                |
| 1 - Polished outside only                             | 8 - LvL ONE® finish on both sides<br>(reference data table for offset position) |
| 2 - Polished inside only<br>(same side as roll stamp) | 9 - Brushed finish on both sides<br>(reference data table for offset position)  |
| 3 - Polished both sides                               |                                                                                 |
- \*0 and 7 finish options are determined by inset or outset mounting positions and may not be finished on both sides. Reference the Technical Data overleaf for offset position and available finish options.



**Dura-Black™ Wheels** are identified by adding "BLK" at the end of the regular part number.

**Dura-Bright® Wheels** are identified by adding "DB" at the end of the regular part number.

**Dura-Flange®** Wear Protection Wheels are identified by adding "DF" at the end of the regular part number.

**The Dura-Bright® and Dura-Flange®** Wear Protection options together are identified by the "DD" suffix.

*Available options for each part number are defined in the Available Finishes column.*

## Additional Information:

- Dura-Bright® Wheels shine without polishing. Just wash with soap and water.
- Do not polish or clean Dura-Bright® Wheels with abrasives. Do not clean any Alcoa wheels with abrasives.
- Do not exceed maximum wheel load. Always compare OEM vehicle load rating to maximum wheel load rating.
- Do not overinflate. Refer to tyre manufacturer's recommendation for proper tyre pressure.
- Before mounting the tyre, perform a wheel fitment check to ensure proper clearance from obstructions.
- Some wheels may bear part numbers not shown in this Spec Guide. Before servicing these wheels, contact your Howmet Wheel Systems wheel representative for proper load, inflation and part compatibility.
- Offset – The distance from the rim centerline to the outside of mounting face of the wheel. Inset is the distance from the centerline to the inside of mounting face of the wheel.
- Check with vehicle manufacturer or axle manufacturer before retrofitting to outset wide base wheels to ensure compatibility with axle and wheel end components. P/N 84U62x is not recommended for use on N-Spindle trailer axles.
- To access the Alcoa Wheel Service Manual use this hyperlink:  
<https://transpecs.co.nz/assets/pdfdocuments/alcoa/service-manual/Alcoa-Wheels-Service-Manual-2017.pdf>
- Details about accessories can be found on pages 7-9.



Wheel Size	Part Number	Replaces	Weight Kgs	Max. Load Kgs	Offset (mm)	Inset (mm)	Disc Thickness (mm)	Stud Hole Dia (mm)	Number of Stud Holes	PCD (mm)	Centre Bore Dia (mm)	Mounting Type	Origin	Polish							Dura-Bright®						Dura-Flange®						D/D				
														0	1	2	3	7	8	9	0	1	2	3	7	9	0	1	2	3	7	8	9	0	1	2	3
17.5 " Wheels																																					
17.5 x 6.00	66313		11.2	1750	135.0	117.0	18	JIS	6	222	164	Stud	Japan,USA				X																				
17.5 x 6.00	66320		12.7	2500	133.0	114.0	19	ISO Φ 26	10	225	176	Hub	Japan				X																				
17.5 x 6.75	66348	66347	12.2	2500	141.0	123.0	18	ISO Φ 24	8	275	221	Hub	USA					X																			
19.5 " Wheels																																					
19.5 x 6.00	76332		15.9	1900	135.0	117.0	18	JIS	6	222	164	Stud	Japan,USA				X																				
19.5 x 6.75	76335		16.9	2500	147.0	125.0	22	JIS	8	285	221	Stud	Japan				X																				
19.5 x 6.75	76641		17.3	2500	147.0	127.0	20	ISO Φ 32	8	275	221	Hub	Japan				X																				
19.5 x 7.50	77345	Replacements only	17.8	3000	155.0	134.0	21	ISO Φ 32	8	275	221	Hub	Hungary					X									X										
19.5 x 7.50	77645	77345	16.0	3000	155.0	134.0	21	ISO Φ 32	8	275	221	Hub	Hungary					X									X				X						
19.5 x 7.50	77347	Replacements only	18.0	3000	155.0	134.0	21	ISO Φ 24	8	275	221	Hub	Hungary					X																			
19.5 x 7.50	77647	77347	16.2	3000	155.0	134.0	21	ISO Φ 24	8	275	221	Hub	Hungary					X											X								
19.5 x 7.5RW	77362	77360	17.1	3040	155.0	133.0	22	ISO Φ 26	10	285	220	Hub	Hungary					X									X										
19.5 x 14.00	74852		21.6	4500	145		25.0	ISO Φ 26	10	335	281	Hub	Hungary													X											
19.5 x 14.00	74340		23.7	4500	25		25	ISO Φ 26	8	275	221	Hub	Hungary														X										
22.5 " Wheels																																					
22.5 x 8.25	88367	Replacement only	20.2	3355	167.0	147.0	20	ISO Φ 26	10	285	220	Hub	USA					X									X	X									
22.5 x 8.25	88267	88367,88364, 88362, 88360	19.0	3355	167.0	147.0	20	ISO Φ 26	10	285	220	Hub	USA					X									X	X									
22.5 x 8.25	88251	88651, 88555, 88455	23.1	3750	168.0	146.0	22	ISO Φ 32	10	335	281	Hub	Hungary					X										X									
22.5 x 8.25	88252	88652, 88557, 88553(NA), 88456	23.2	3750	168.0	146.0	22	ISO Φ 26	1																												

## Alcoa® One-Piece Hub Cover System with Retention Nuts (for 10-Hole, 285.75mm, 22.5" and 24.5" Wheels)

### New! Improved Retention. Fits More Applications.

This new one-piece design improves on our classic system to meet the needs of today's trucks. The improved retention nut system ensures proper fitment and the taller lug nut towers accommodate a wider variety of applications including wide base wheels, disc brakes, and other new truck trend variations. Offered in both front and rear applications, each system is designed to fit 10-hole hub piloted wheels (285.75mm, 22.5" and 24.5").



Part No.	Description	Wheel Type	Finish
088100S	Front Axle Kit includes: Two front covers, six retention nuts, and one removal tool. Use a short handle rubber mallet for installation. Requires a minimum of 3 threads per stud.	Hub Piloted	Chrome
089100S	Rear Axle Kit Includes: Two rear covers, six retention nuts, and one removal tool. Use a short handle rubber mallet for installation. Requires a minimum of 3 threads per stud.	Hub Piloted	Chrome
BALGRIP	Pliers for Stainless Steel Wheel Nut Covers		



## Alcoa® Wheel Hub Cover Kit - suits Screw on Nut Cover

Part No.	Description	Wheel Type	Nut Cover
076185*	Hub Piloted Hub Covers - includes 1 Hub Cover, 10 Screw on Hug-A-Lugs, 1 Wrench Fitting: Cover is secured by screwing the 001851 directly onto stud threads.	Hub Piloted	33mm - 001851
077185*	Hub Piloted Hub Covers - includes 1 Hub Cover, 10 Screw on Hug-A-Lugs with Clamps, 1 Wrench Fitting: Cover is secured by screwing the 001881 onto the inner clamp. Inner clamp is placed on stud threads.	Hub Piloted	33mm - 001851

\*Require a minimum of 4 threads per stud for fitting



## Alcoa® Wheel Hub Cover Kit - suits Clamp type Cover

Part No.	Description	Wheel Type	Nut Cover
077188	Hub Piloted Hub Covers - includes 1 Hub Cover, 10 Screw on Hug-A-Lugs with Clamps, 1 Wrench Fitting: Cover is secured by screwing the 001881 onto the inner clamp. Inner clamp is placed on stud threads.	Hub Piloted	33mm - 001881
076188	Hub Piloted Hub Covers - includes 1 Hub Cover, 10 Screw on Hug-A-Lugs with Clamps, 1 Wrench Fitting: Cover is secured by screwing the 001881 onto the inner clamp. Inner clamp is placed on stud threads.	Hub Piloted	33mm - 001881



## Alcoa® Hug-A-Lug Nut Covers 33mm Hex 2 Piece Flange Nuts (Hub Piloted Wheel) Heights 27-31mm (Supplied Each)

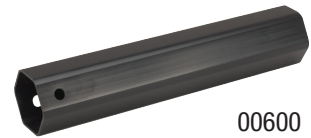
Part No.	Description	Finish
001851	For 33mm Wheel Nut - Screw Direct Onto 22mm	Chrome
000181	For 33mm Wheel Nut -Push-on Type	Chrome
001881	Off-White Interlocking Clip	Off White



001851

## Alcoa® Hub Cover System Cap Nut Cover Wrench

Part No.	Description	Finish
000600	Cap Nut Cover Wrench for Hub Piloted Hug-A-Lugs	Chrome



00600

## Alcoa® Stainless Steel Nut Covers

Part No.	Description	Finish
BALCOV32	Branded Nut Cover Suit Retro-Fit 32mm Nuts	S/S
BALCOV33	Branded Nut Cover Suit Retro-Fit 33mm Nuts	S/S
BALGRIP	Pliers for Stainless Steel Wheel Nut Covers	



BALGRIP

## Alcoa® Hug-A-Lug Covers for 1.5" Hex Nut (Ball Seat, with clamps)

Part No.	Description	Finish
001551	For 1.5" Hex Ball Seat Nut, with clamps	Chrome





## Alcoa® ISO Retro Fit Sleeve Nuts Steer Wheels ISO Retro Fit Sleeve Nuts - Dacromet Treated

Part No.	Description
B5780/32	M22 x 1.5mm - 32mm Dia/Hex Head Short Sleeve Nut - Single Wheel
B5780-32LH	M22 x 1.5mm Short Sleeve LH Thread Single Steel Wheels
B6142	M20 x 1.5mm Short Sleeve Nut for Single Steer Wheel
5784.32.00	7/8"-11 BSF Sleeved Nut for Single Mounting Scania with 32mm Bolt Holes



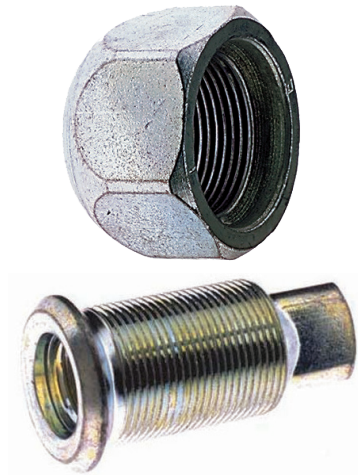
## Alcoa® Rear Wheels ISO Retro Fit Sleeve Nuts - Dacromet Treated

Part No.	Description
B5781/32	M22 x 1.5mm Long Sleeve Nut for Dual Rear Wheels
5781-32LH	M22 x 1.5mm Short Sleeve LH Thread Single Steel Wheels
B6143/30	M20 x 1.5mm Long Sleeve Nut for Dual Rear Wheels
B5781/32USA	M22 x 1.5mm Long Shank Sleeve Nut Dual Rear Wheels
5785.32.00	7/8"-11 BSF Sleeved Nut for Dual Mounting Scania with 32mm Bolt Holes



## Alcoa® Cap Nuts for Ball Seat Wheels Outside Front Wheel Nuts

Part No.	Description
NF24-R	24mm x 1.5mm - Front, Right Hand Thread Wheel Nut
NF24-L	24mm x 1.5mm - Front Left Hand Thread Wheel Nut
NF20-R	20mm x 1.5mm - Right Hand Wheel Nut
NF20-L	20mm x 1.5mm - Left Hand Wheel Nut



## Alcoa® Inside Rear Wheel Nuts

Part No.	Description
NR20-R	20mm x 1.5mm & 30 x 1.5mm Right Hand Inner Cap Nut
NR20-L	20mm x 1.5mm & 30 x 1.5mm Left Hand Inner Cap Nut
407422	M22 x 1.5" 26mm E-Z Mount Sleeve





**INNOVATION**  
IS IN OUR DNA



INNOVATING ALUMINIUM WHEELS  
FOR OVER 70 YEARS