

## TOW EYES - WELD-IN 40MM

### Part No. 40MM/SS201025

- D-value: 125kN
- 65mm W x 55mm H shank x 335mm (hole centre to shaft end)
- Weight: 7.2kgs
- Static vertical support load: 900kgs
- DC-value: 66kN. V-value: 20kN



### Part No. 40MM/LS201031

- D-value: 125kN
- 65mm W x 60mm H shank x 335mm (hole centre to shaft end)
- Weight: 7.8kgs
- Static vertical support load: 1000kgs
- DC-value: 74kN. V-value: 23kN



## TOW EYES - WELD-IN 50MM

### Part No. 50MM/SS203031

- D-value: 190kN
- 65mm W x 60mm H shank x 375mm (hole centre to shaft end)
- Weight: 10.5kgs
- Static vertical support load: 1000kgs
- DC-value: 90kN. V-value: 30kN



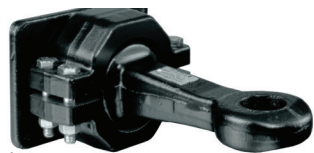
### Part No. 50MM/LS203142

- D-value: 314kN
- 75mm W x 90mm H shank x 385mm (hole centre to shaft end)
- Weight: 13.4kgs



### Part No. 9994939

- D-value: 320kN
- Length 331mm (face plate to eye centre)
- Weight: 28.5kgs
- DC-value: 135kN
- V-value: 75kN @ 1000kg vertical load
- V-value: 63kN @ 2500kg vertical load



## TOW EYES - FLANGE MOUNT

### Part No. 10990548 (40mm)

- D-value: 125kN
- 6 Bolt holes
- Length 250mm (hole centre to shaft end)
- Weight: 10kgs
- Static vertical support load: 1000kgs
- DC-value: 100kN. V-value: 40kN
- Screw Specs: M16 x 50 DIN9 12-10.9



### Part No. 10995337 (50mm)

- D-value: 190kN
- 8 Bolt holes
- Length 250mm (hole centre to shaft end)
- Weight: 11.2kgs
- Static vertical support load: 1000kgs
- DC-value: 120kN. V-value: 50kN
- Screw Specs: M16 x 50 DIN9 12-10.9



### Part No. 2498405 Backing Plate for Flange Mount Tow Eyes

- Suitable for both 40 (part no. 10990548) and 50mm (part no. 10995337) flange mount tow eyes.



## TOW EYES - INTERCHANGEABLE

- Part No.** Description:  
**5992877** 40mm Assembly  
**5992885** 50mm Assembly  
**47204580** 3" Pintle Eye Assembly

- Torque nut to 750Nm



Pictured: 5992877

### Part No. 6992013 (201581)

- Length 475mm (hole centre to shaft end)
- Weight: 9.8kg
- Static vertical support load: 1000kgs
- D-value: 125kN
- Dc-value: 74kN
- V-value: 23kN

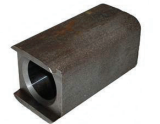


### Part No. 6992021 (203583)

- Length 475mm (hole centre to end of shaft)
- Weight: 11.1kg
- Static vertical support load: 1000kgs
- D-value: 190kN
- Dc-value: 90kN
- V-value: 25kN



### Part No. 1636855 Housing



### Part No. 12991240 Washer



### Part No. 6997732 Nut



### Part No. 12991533 Split Pin



## TOW EYES - BUSHES & TOOLS

### Bushes 40mm

Part No.	Outer Dia:
10995469	48 mm
10995485	48.5 mm
10995558	49 mm
10995540	50 mm
10995477	49 mm

### Bushes 50mm

Part No.	Outer Dia:
10996589	60.5 mm
10996520	61 mm
10996570	61.5 mm



### Part No. 10990998 Coupling Pin and Tow Eye Bush Wear Gauge

- Wear gauge for 40mm and 50mm coupling pin and tow eye bush



### Drift for Tow Eye Bush

Part No.	Size:
40MMD	40 mm
50MMD	50 mm

