

Workshop Procedure

Seized Hub Removal



Table of contents

| | |
|-----------------------------------|-------------|
| General information..... | 3 |
| Safety information..... | 3 |
| Safety information..... | 4 |
| Preparation..... | 4 |
| Tools required..... | 5 |
| | |
| Removal of seized hub..... | 6-10 |

1 General information

Please read these instructions completely and carefully prior to performing any work. Keep them in a safe place for future reference. These instructions describe how to remove and replace a seized hub on Z19-19W axle. They are intended for exclusive use by appropriately trained and qualified personnel of authorized service centres specialized in trailer vehicles and authorized specialist companies. The hub must be removed and replaced in accordance with the applicable safety regulations and good engineering practice so that employees and third parties are not exposed to danger. All safety instructions and warnings given in these instructions must be strictly followed.

1.1 Safety information

Information accented by a signal word such as DANGER, WARNING, CAUTION, or NOTICE, must be followed at all times. Additional notes are utilized to emphasize areas of procedural importance or provide additional information. Failure to follow the instructions mentioned in this publication may jeopardize the personal safety of the service technician or vehicle operator.

DANGER

DANGER indicates an imminently hazardous situation which, if not avoided, will result in death or serious injury.

WARNING

WARNING indicates a potentially hazardous situation which, if not avoided, could result in death or serious injury.

CAUTION

CAUTION indicates a potentially hazardous situation which, if not avoided, may result in minor or moderate injury.

NOTICE

NOTICE indicates a potentially hazardous situation which, if not avoided may result in property damage.

IMPORTANT

Indicates an operating procedure or practice that is essential to follow.

INFORMATION

Provides additional information.

Prior to removing the hub with cutting disc, perform the following steps in accordance with the relevant operating instructions and the associated repair and maintenance manual, observing the indicated safety instructions:

1. Place wheel chocks in front of and behind the trailer wheels to prevent the trailer from rolling.



Failure to use wheel chocks might allow the vehicle to roll which could result in death or serious injury.

2. Bleed all air from the air suspension system.
3. Place jacks under the trailing arm.
4. Remove wheel/s.
5. Place fire extinguishers a few meters from each side of hub.

Removal

In the first instance of a seized hub try to remove using a puller, if this does not move the hub then proceed using the following instruction.



Tools required



½" Drive bar

½" Drive extension

Pry bar

Hub cap removal tool

Wheel nut socket

15mm rotor bolt socket

Hub nut socket

Long screwdriver

Chisel

9" Electric grinder (with cutting disc)

4" Electric grinder (with cutting disc)

Emery cloth

Spindle paste (SAF Lilube Easy Fit)

Welding gloves

Welding jacket or apron

Full face protection

Safety glasses

Ear protection

Work gloves

2 x 2kg Fire Extinguisher

Remove hub cap using hub cap removing tool



Hub Cap

Removal tools



Remove rotor bolts using 15mm socket



Rotor bolts

15mm socket



P/N 04 434 3873 00

Remove Hub nut using Hub nut socket



Hub Nut

Hub nut socket



P/N 04 343 3828 00

NOTE: Left hand side – Left hand thread

Right hand side –Right hand thread

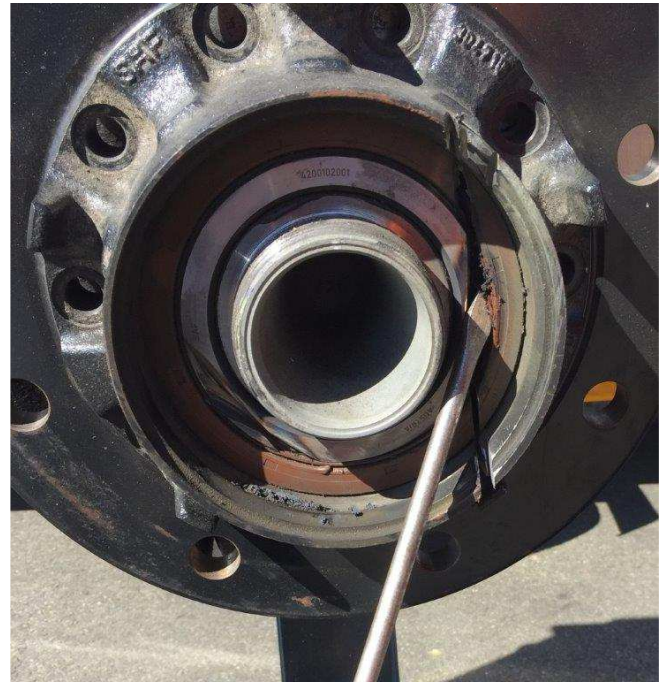


Area to cut using 9" cutting wheel



A cut should be made vertically through the front edge of the outer bearing, cutting enough of the bearing to enable final cut off using a chisel.

Using a long screwdriver, remove the outer seal



Using a screwdriver break the plastic bearing cage and remove all the rollers from the outer bearing



Remove hub (tapping with hammer if required), break plastic cage on inner bearing and remove rollers.

Clean off excess grease and install hub installation tool (P/N 04 434 1067 00) to protect spindle threads



Using a 4" cutting disc, cut a slot along the top of the bearing race



Using a chisel split the bearing race and remove the hub installation tool

Remove the bearing race by tapping on the inner edge with a hammer



Clean and prepare spindle for installation of replacement hub

